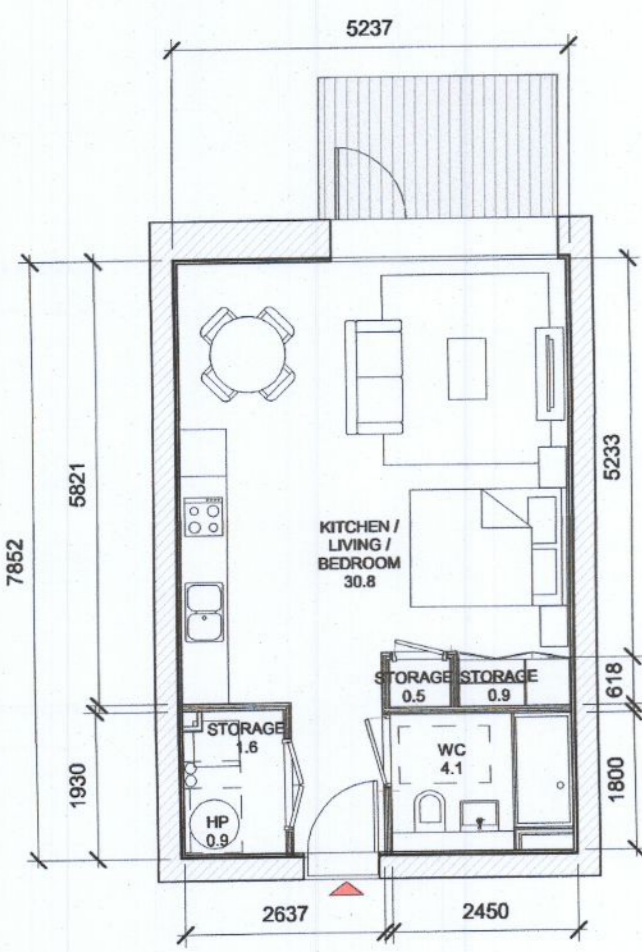
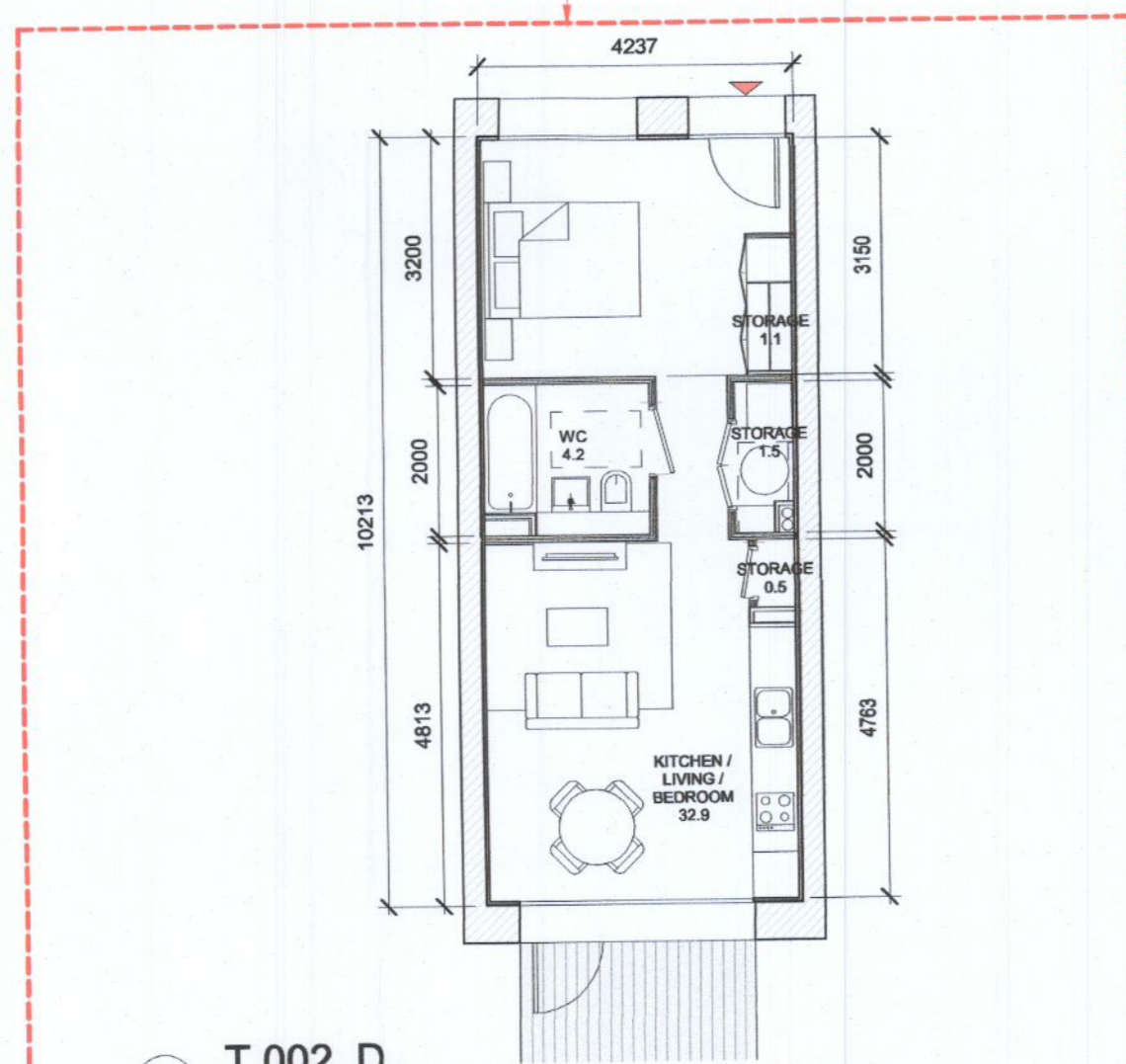


UPDATED TYPE



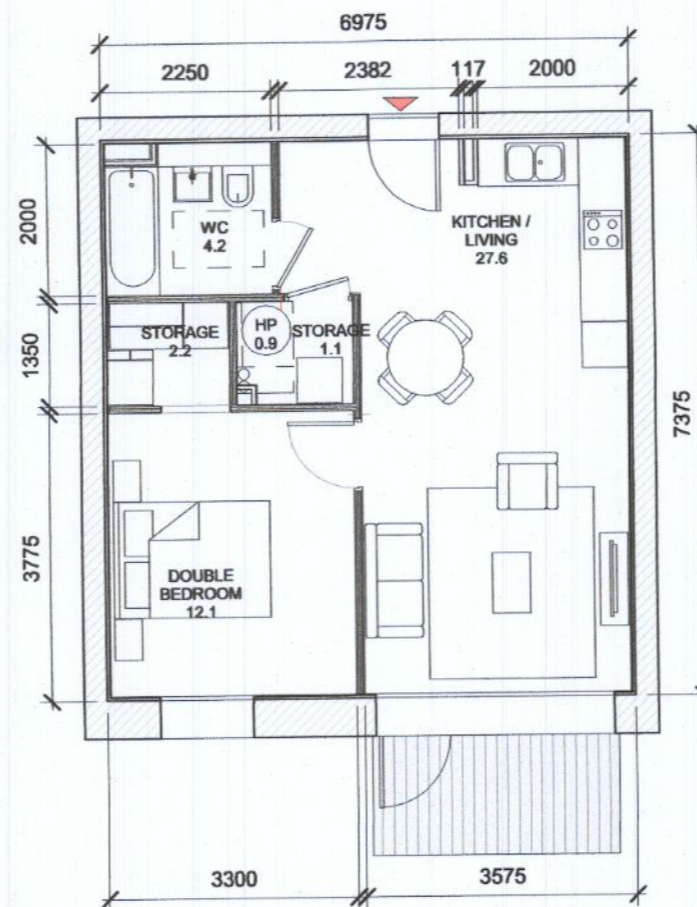
1 T.001 D
1 : 100

T.001_D SPACE REQUIREMENTS										
Apartment Area	Required Apartment Area	Required Area Met	Kitchen - Living Area	Required Kitchen - Living Area	Required Area Met	Total Bedroom Area	Required Total Bedroom Area	Required Area Met	Heat Pump Area	
38.8 m ²	37.0 m ²	Yes	30.8 m ²	30.0 m ²	Yes	0.0 m ²	3.0 m ²	3.0 m ²	Yes	0.9 m ²



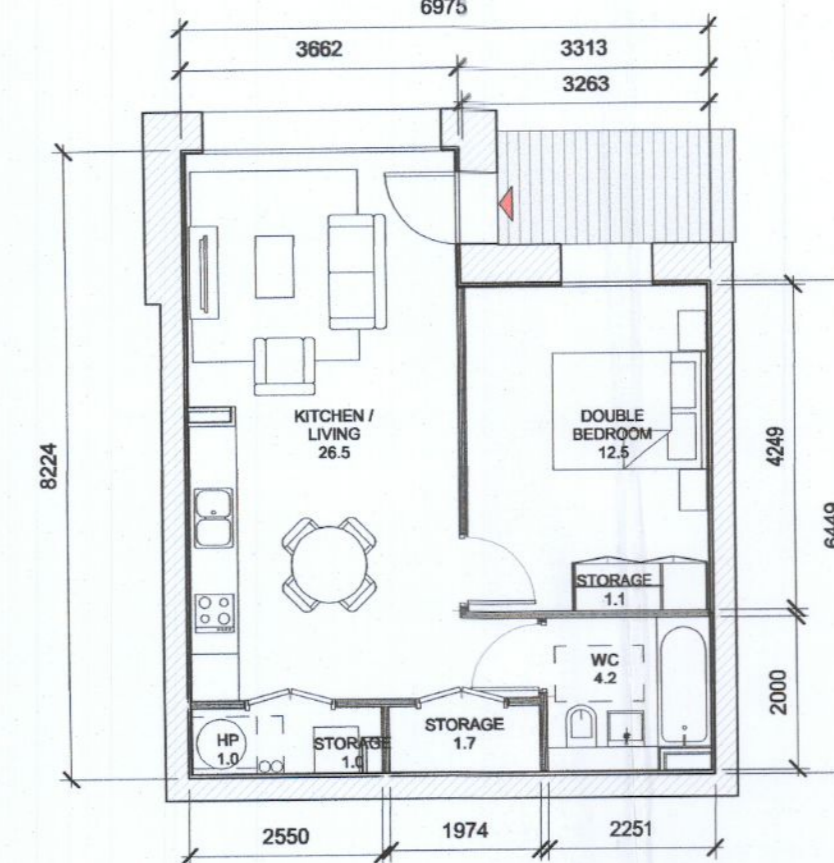
2 T.002 D
1 : 100

T.002_D SPACE REQUIREMENTS										
Apartment Area	Required Apartment Area	Required Area Met	Kitchen - Living Area	Required Kitchen - Living Area	Required Area Met	Total Bedroom Area	Required Total Bedroom Area	Required Area Met	Heat Pump Area	
41.8 m ²	37.0 m ²	Yes	32.9 m ²	30.0 m ²	Yes	0.0 m ²	3.2 m ²	3.0 m ²	Yes	0.9 m ²



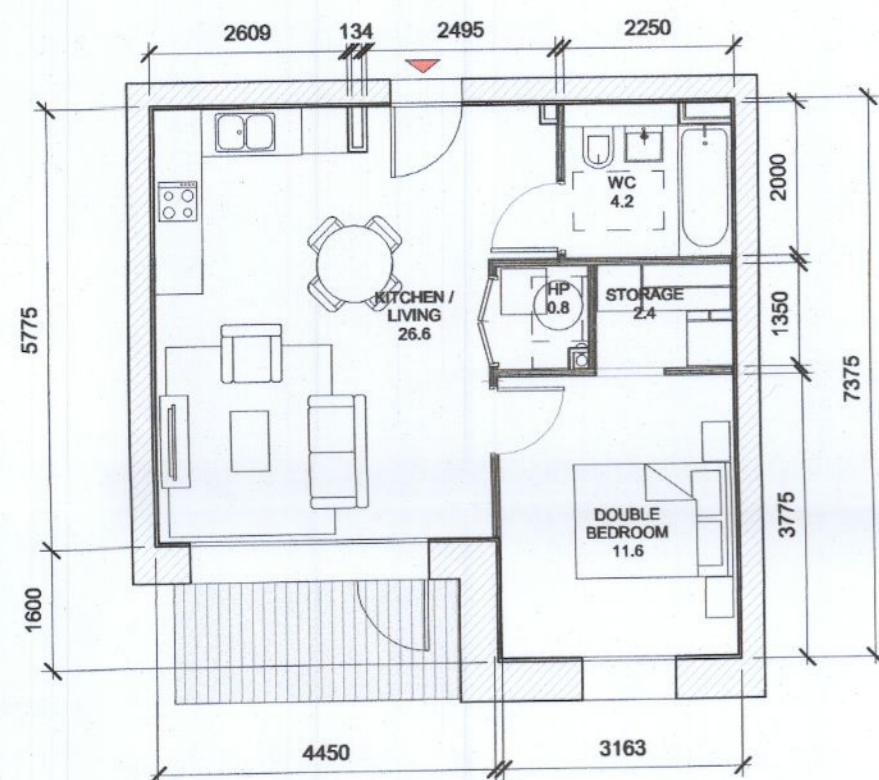
3 T.101 A
1 : 100

T.101_A SPACE REQUIREMENTS									
Apartment Area	Required Apartment Area	Required Area Met	Kitchen - Living Area	Required Kitchen - Living Area	Required Area Met	Total Bedroom Area	Required Total Bedroom Area	Required Area Met	Heat Pump Area
50.0 m ²	45.0 m ²	Yes	27.6 m ²	23.0 m ²	Yes	12.1 m ²	11.4 m ²	Yes	1.0 m ²



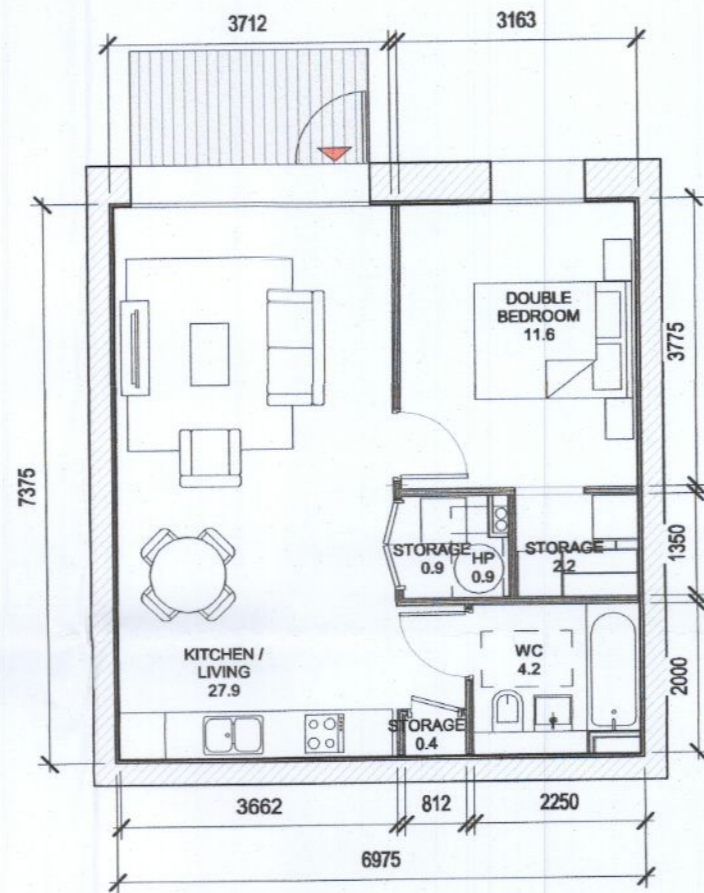
4 T.102 A
1 : 100

T.102_A SPACE REQUIREMENTS									
Apartment Area	Required Apartment Area	Required Area Met	Kitchen - Living Area	Required Kitchen - Living Area	Required Area Met	Total Bedroom Area	Required Total Bedroom Area	Required Area Met	Heat Pump Area
50.0 m ²	45.0 m ²	Yes	26.5 m ²	23.0 m ²	Yes	12.5 m ²	11.4 m ²	Yes	0.9 m ²



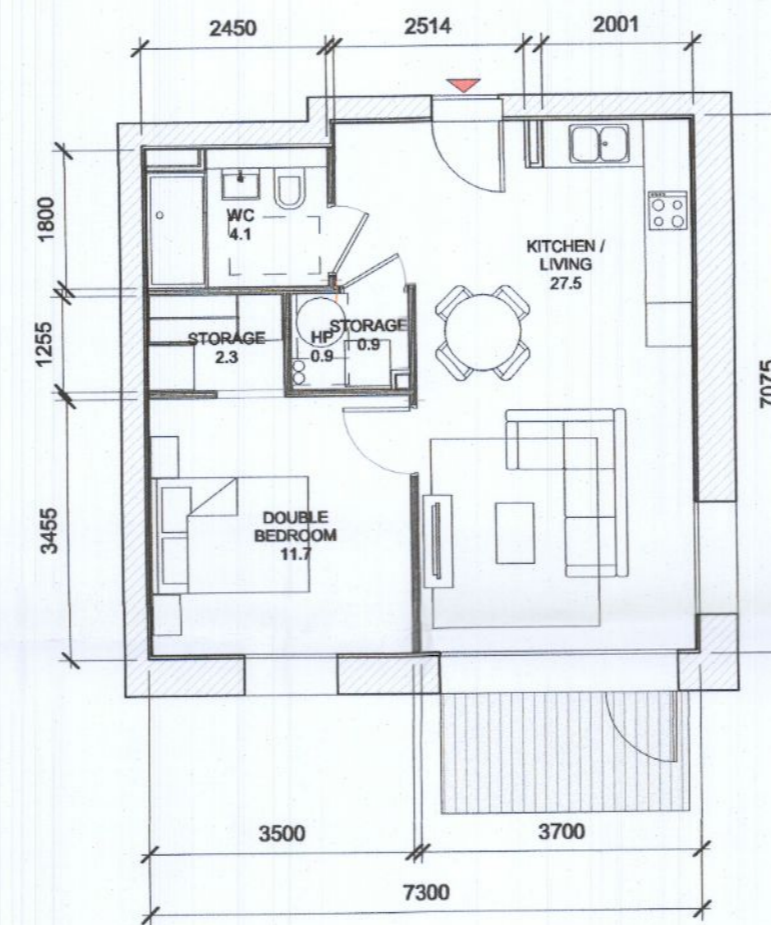
5 T.103 A
1 : 100

T.103_A SPACE REQUIREMENTS									
Apartment Area	Required Apartment Area	Required Area Met	Kitchen - Living Area	Required Kitchen - Living Area	Required Area Met	Total Bedroom Area	Required Total Bedroom Area	Required Area Met	Heat Pump Area
48.2 m ²	45.0 m ²	Yes	26.6 m ²	23.0 m ²	Yes	11.6 m ²	11.4 m ²	Yes	1.0 m ²



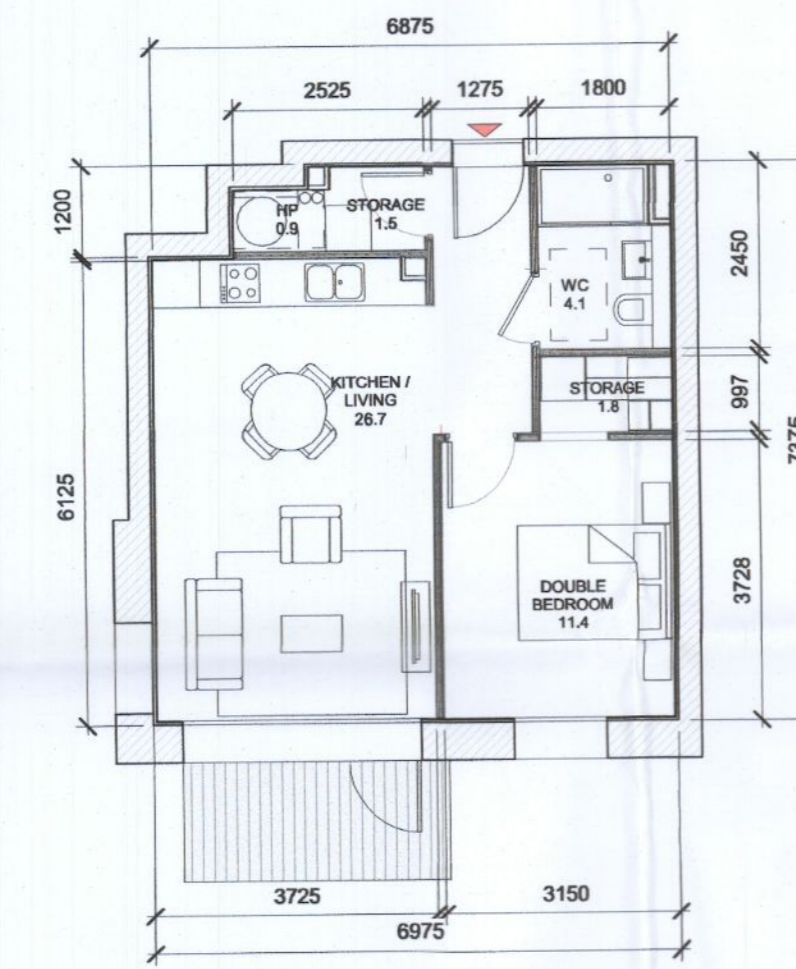
6 T.104 A
1 : 100

T.104_A SPACE REQUIREMENTS									
Apartment Area	Required Apartment Area	Required Area Met	Kitchen - Living Area	Required Kitchen - Living Area	Required Area Met	Total Bedroom Area	Required Total Bedroom Area	Required Area Met	Heat Pump Area
50.0 m ²	45.0 m ²	Yes	27.9 m ²	23.0 m ²	Yes	11.6 m ²	11.4 m ²	Yes	1.0 m ²



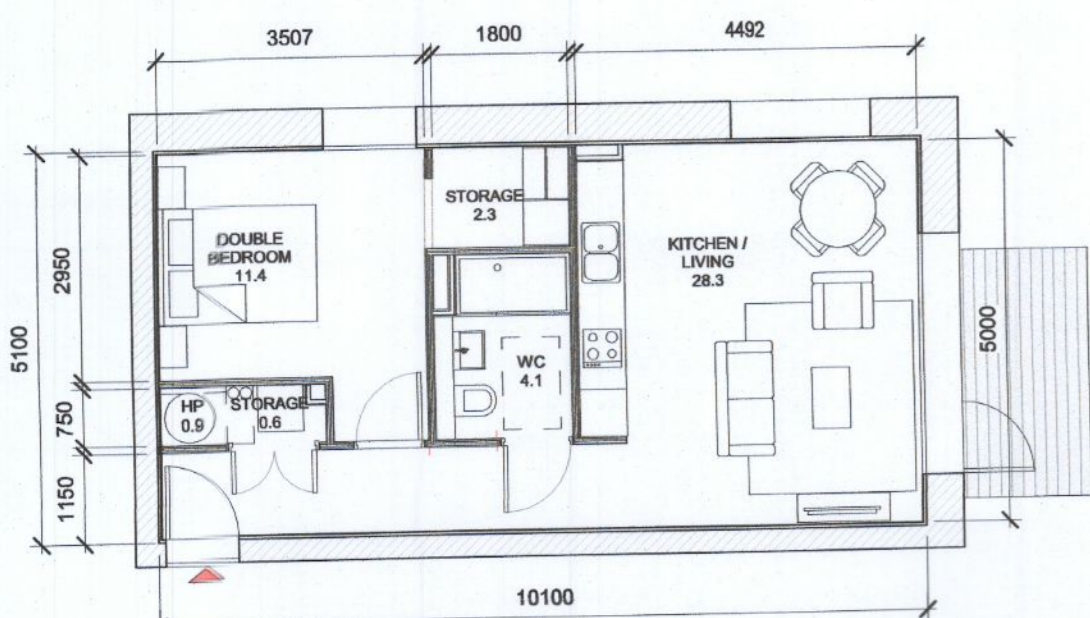
7 T.105 A
1 : 100

T.105_A SPACE REQUIREMENTS									
Apartment Area	Required Apartment Area	Required Area Met	Kitchen - Living Area	Required Kitchen - Living Area	Required Area Met	Total Bedroom Area	Required Total Bedroom Area	Required Area Met	Heat Pump Area
50.2 m ²	45.0 m ²	Yes	27.5 m ²	23.0 m ²	Yes	11.7 m ²	11.4 m ²	Yes	0.9 m ²



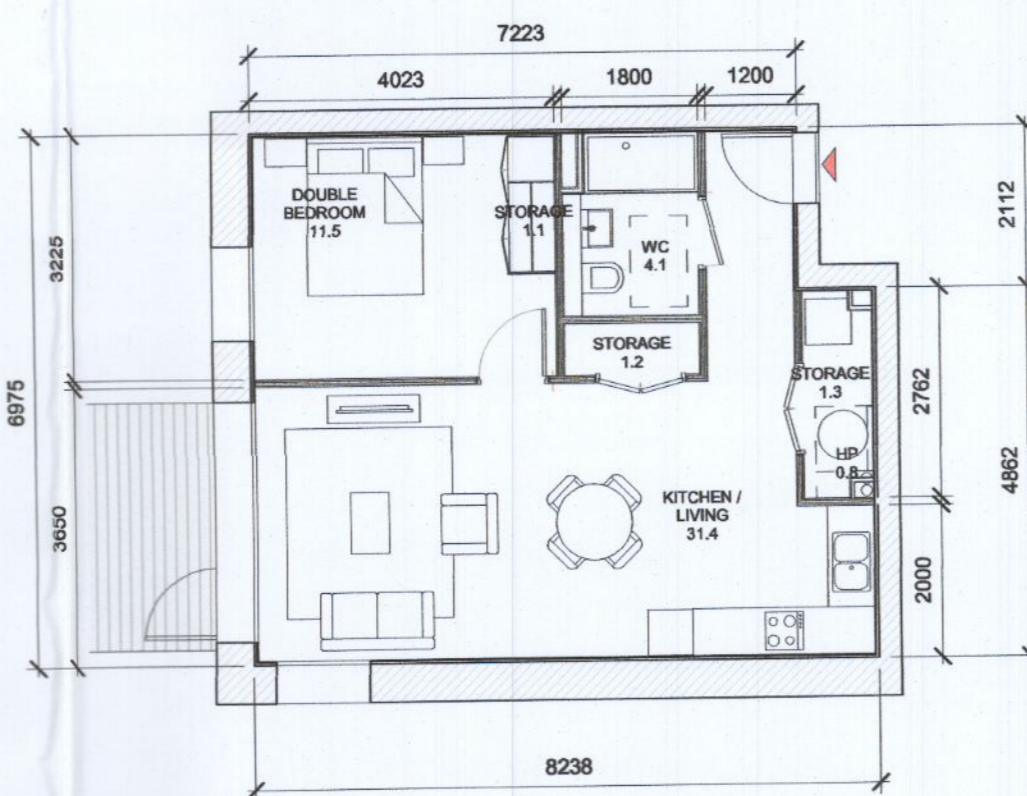
8 T.106 A
1 : 100

T.106_A SPACE REQUIREMENTS									
Apartment Area	Required Apartment Area	Required Area Met	Kitchen - Living Area	Required Kitchen - Living Area	Required Area Met	Total Bedroom Area	Required Total Bedroom Area	Required Area Met	Heat Pump Area
48.4 m ²	45.0 m ²	Yes	26.8 m ²	23.0 m ²	Yes	11.4 m ²	11.4 m ²	Yes	0.9 m ²



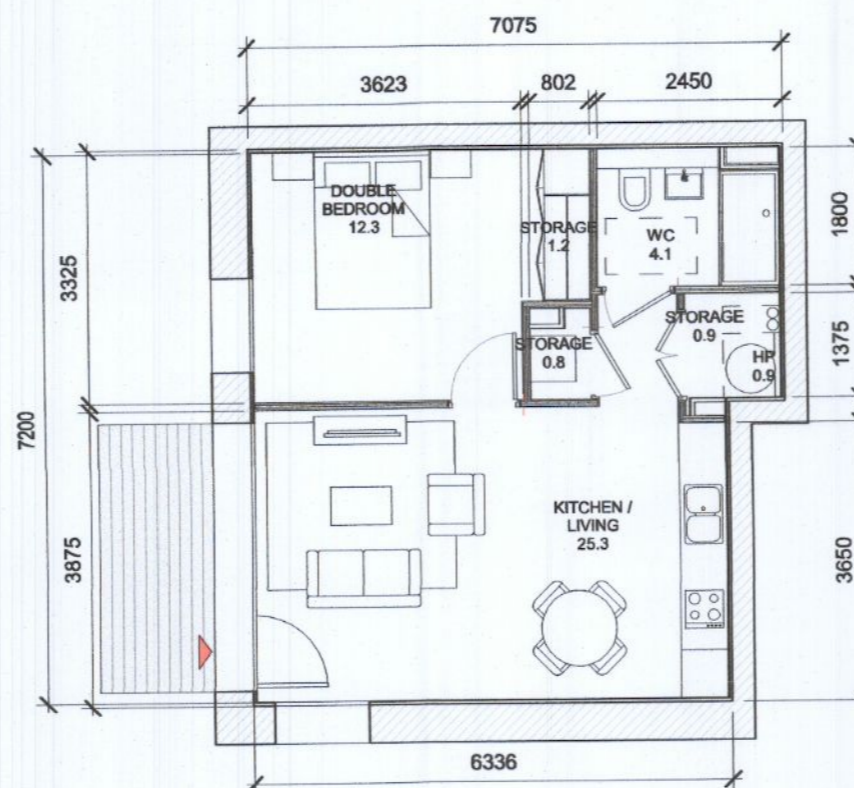
9 T.107 A
1 : 100

T.107_A SPACE REQUIREMENTS									
Apartment Area	Required Apartment Area	Required Area Met	Kitchen - Living Area	Required Kitchen - Living Area	Required Area Met	Total Bedroom Area	Required Total Bedroom Area	Required Area Met	Heat Pump Area
50.0 m ²	45.0 m ²	Yes	28.3 m ²	23.0 m ²	Yes	11.4 m ²	11.4 m ²	Yes	0.9 m ²



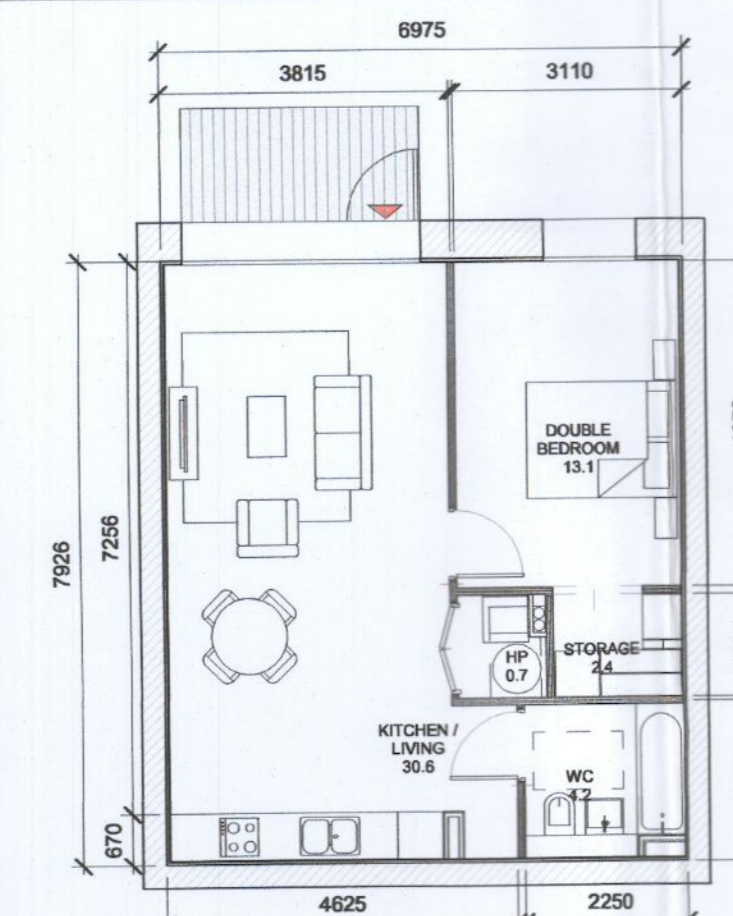
10 T.108 A
1 : 100

T.108_A SPACE REQUIREMENTS									
Apartment Area	Required Apartment Area	Required Area Met	Kitchen - Living Area	Required Kitchen - Living Area	Required Area Met	Total Bedroom Area	Required Total Bedroom Area	Required Area Met	Heat Pump Area
53.5 m ²	45.0 m ²	Yes	31.4 m ²	23.0 m ²	Yes	11.5 m ²	11.4 m ²	Yes	0.9 m ²



11 T.109 A
1 : 100

T.109_A SPACE REQUIREMENTS									
Apartment Area	Required Apartment Area	Required Area Met	Kitchen - Living Area	Required Kitchen - Living Area	Required Area Met	Total Bedroom Area	Required Total Bedroom Area	Required Area Met	Heat Pump Area
47.3 m ²	45.0 m ²	Yes	25.3 m ²	23.0 m ²	Yes	12.3 m ²	11.4 m ²	Yes	0.7 m ²



12 T.110 A
1 : 100

T.110_A SPACE REQUIREMENTS									
Apartment Area	Required Apartment Area	Required Area Met	Kitchen - Living Area	Required Kitchen - Living Area	Required Area Met	Total Bedroom Area	Required Total Bedroom Area	Required Area Met	Heat Pump Area
53.8 m ²	45.0 m ²	Yes	30.6 m ²	23.0 m ²	Yes	13.1 m ²	11.4 m ²	Yes	1.0 m ²

ALL DIMENSIONS TO BE CHECKED ON SITE
NO DIMENSIONS TO BE SCALED FROM THIS DRAWING
DRAWING IS TO BE READ IN CONJUNCTION WITH RELEVANT CONSULTANTS DRAWINGS

APARTMENT TYPES 1B						
Count	Unit Type	Type Name	Block	Area sqm	Min. Area	
5	1 ST	T.001_D	D	39.8	37.0	
4	1 ST	T.002_D	D	41.8	37.0	
1 ST: 9						
33	1B	T.101_A	A	50.0	45.0	
4	1B	T.101_C	C	50.0	45.0	
20	1B	T.101_D	D	49.5	45.0	
40	1B	T.101_C	C	49.5	45.0	
3	1B	T.101_D	D	53.7	45.0	
2	1B	T.102_A	A	50.0	45.0	
1	1B	T.102_C	C	54.3	45.0	
8	1B	T.102_D	D	50.7	45.0	
6	1B	T.103_A	A	48.2	45.0	
8	1B	T.103_C	C	49.7	45.0	
6	1B	T.103_D	D	51.0	45.0	
4	1B	T.104_A	A	50.0	45.0	
9	1B	T.104_C	C	51.0	45.0	
8	1B	T.105_A	A	49.5	45.0	
8	1B	T.105_C	C	50.1	45.0	
4	1B	T.105_D	D	48.0	45.0	
4	1B	T.106_A	A	48.4	45.0	
4	1B	T.106_C	C	50.0	45.0	
3	1B	T.106_D	D	48.5	45.0	
8	1B	T.107_A	A	50.0	45.0	
1	1B	T.107_C	C	50.0	45.0	
1	1B	T.108_A	A	53.5	45.0	
1	1B	T.108_C	C	49.7	45.0	
2	1B	T.109_A	A	47.3	45.0	
2	1B	T.110_A	A	53.8	45.0	

Grand total: 211

1B: 202

NON RFI RELATED CHANGES

STATUTORY CHANGES

DESIGN CHANGES

GENERAL NOTES:

- O1 ALL INTERNAL APARTMENT LAYOUTS HAVE BEEN AMENDED DUE TO DESIGN DEVELOPMENT AND CO-ORDINATION WITH OTHER DISCIPLINES. THE INDIVIDUAL UNITS MAINTAIN THE SPACE REQUIREMENT GUIDELINES AS PER THE ORIGINAL PLANNING SUBMISSION
- O2 MINOR AMENDMENTS TO M&E AND SE LAYOUTS DUE TO DESIGN DEVELOPMENT & TO ACCOMMODATE COMPLIANCE WITH STATUTORY REQUIREMENTS
- O3 REDUCED PARAPET HEIGHT & FALL ARREST SYSTEM INTRODUCED TO BLOCKS A,C,D AND RESIDENT PAVILLION BUILDINGS DUE TO MAINTENANCE. PARAPET HEIGHT OF TOWER ELEMENT OF BLOCK C1 RETAINED AS PER ORIGINAL PLANNING APPLICATION

Red dash line indicates extent of amendments to address RFI 0723 dated 08 JUNE 2022

REV	DATE	DESCRIPTION	CHK	DR
P02	06/09/2022	ISSUED FOR FURTHER INFORMATION	RJ	SEN
P01	08/04/2022	ISSUED FOR PLANNING	RJ	FM

STATUS CODE DESCRIPTION

ISSUED FOR FURTHER INFORMATION

CLIENT
QUINTAIN IRELAND LTD.

PROJECT
ADAMSTOWN STATION BLOCKS ACD

DRAWING
APARTMENT TYPES Sheet 1
Studio & 1B Apartments

PROJECT NUMBER	DATE
950747	08/04/22

SCALE@ A1:	DRAWN/CHECKED:
As indicated	SEN/RJ

STATUS CODE:	DRAWING NUMBER	REVISION
A1	ADC3-HJL-ACD-ZZ-DR-A-P8001	P02

Henry J Lyons

Architecture + Interiors
henryjlyons.com

+353 1 888 3333
info@henryjlyons.com

51-54 Pearse Street
Dublin D02 KA66

HJL Drawing Number on previously lodged planning application:
SD22A/0005

ADC3-HJL-ACD-ZZ-DR-A-P8001 Revision (P01)