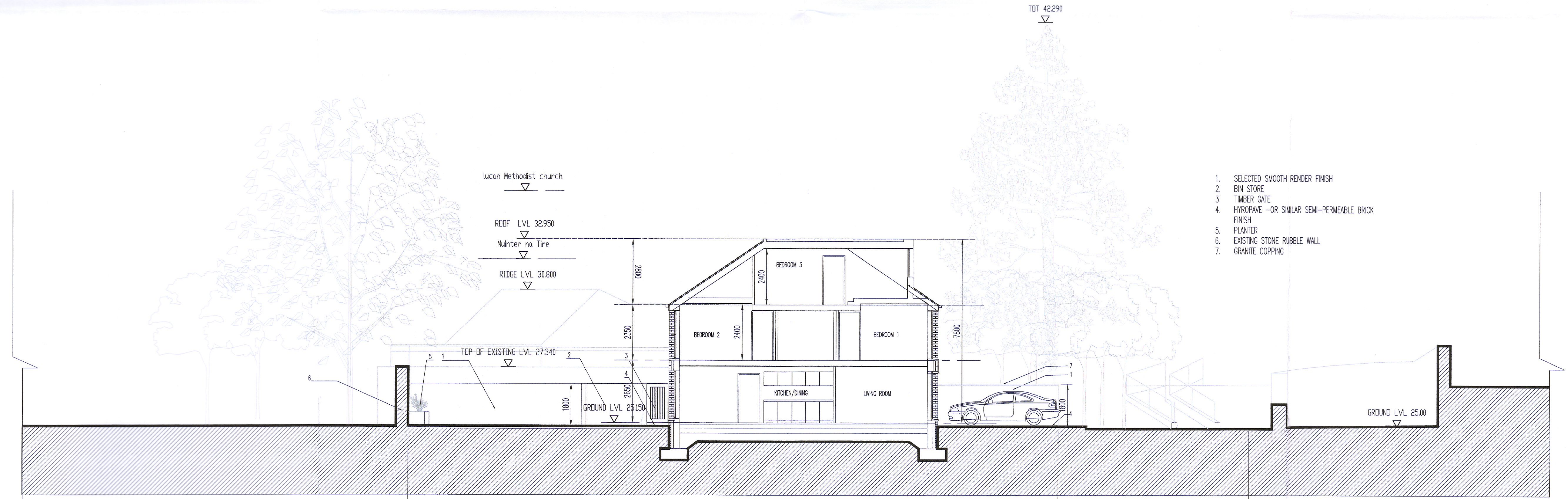




**CONTIGUOUS ELEVATION**  
SCALE 1:100



**SITE SECTION 1-1.**  
SCALE 1:100

1. SELECTED SMOOTH RENDER FINISH
2. BIN STORE
3. TIMBER GATE
4. HYDROPAVE -OR SIMILAR SEMI-PERMEABLE BRICK FINISH
5. PLANTER
6. EXISTING STONE RUBBLE WALL
7. GRANITE COPPING

**ISSUED FOR ADDITIONAL INFORMATION- SD22A/0066**

**General Notes:-**  
Contractors must verify all dimensions on the site before commencing work.  
Work only from figured dimensions.  
This drawing to be read in conjunction with all relevant Consultant's drawings.  
Reproduction of the whole or part of the information, ideas & concepts herein this drawing constitutes an infringement of copyright.

Revision Schedule			
Initial	Rev	Date	

Revision Schedule			
Initial	Rev	Date	

Revision Schedule			
Initial	Rev	Date	
NMB	A	22.08.2022	ISSUED FOR ADDITIONAL INFORMATION- SD22A/0066
NMB	-	21.02.2022	ISSUED FOR PLANNING

<b>Drawing Title</b> SITE SECTION. CONTIGUOUS ELEVATION - ADDITIONAL INFORMATION		<b>PAMES DEVELOPMENTS LTD.</b> <small>First Floor, 60 Amiens Street, Dublin 1.</small>	
<small>Project: RESIDENTIAL DEVELOPMENT AT HILLVIEW, DISPENSARY LANE, LUCAN.</small>		<small>Tel: 01-6950204 e-mail: info@pames.ie</small>	
<small>Client: JOHN POPE</small> <small>Date: AUGUST '22</small>	<small>Drawn: NMB</small> <small>Scale: 1:100 @ A1</small>	<small>Checked: TC</small> <small>CAD Ref:</small>	<small>Job No: 21010</small> <small>Drawing No: PL-003</small> <small>Revision</small>