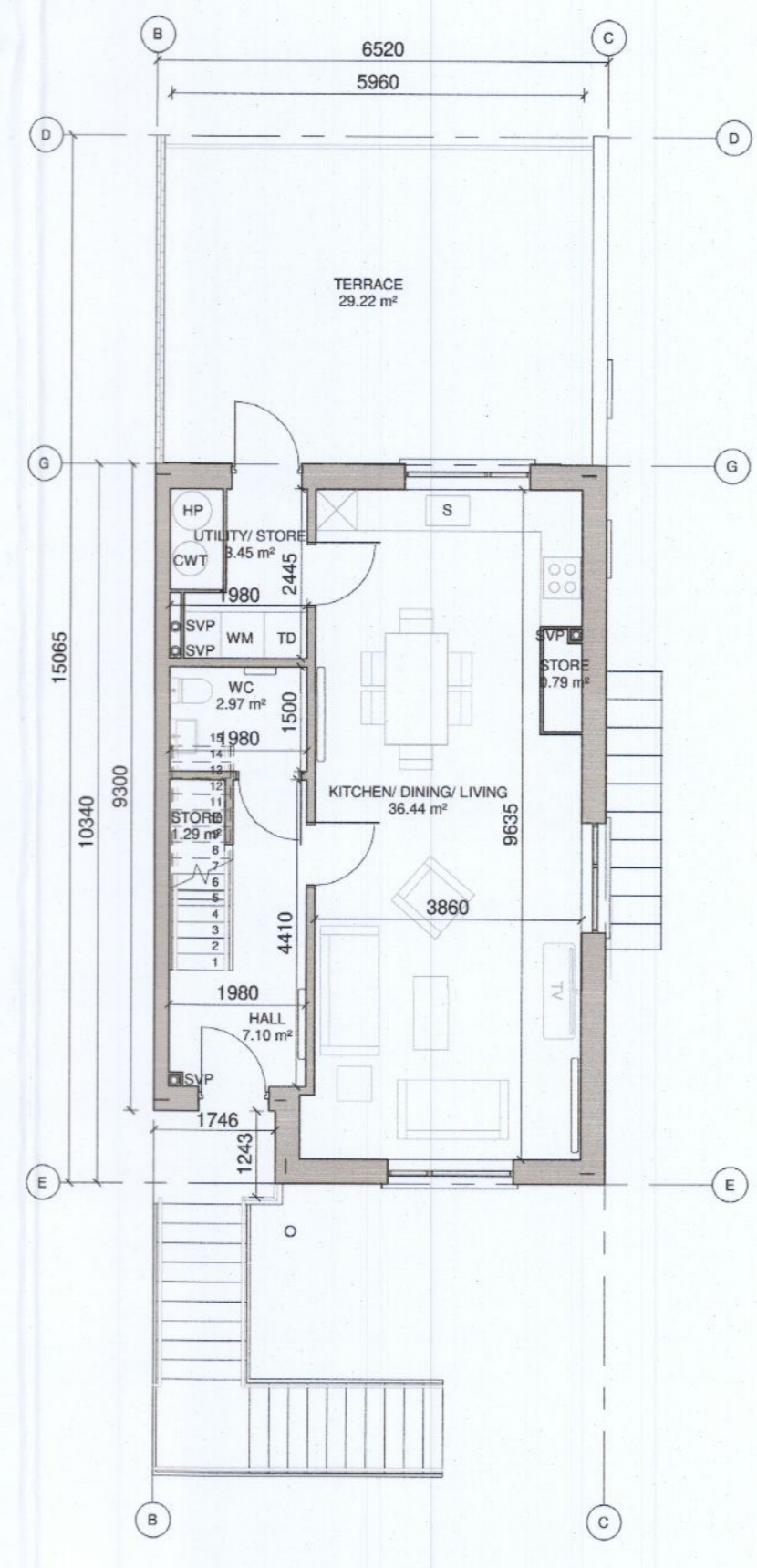
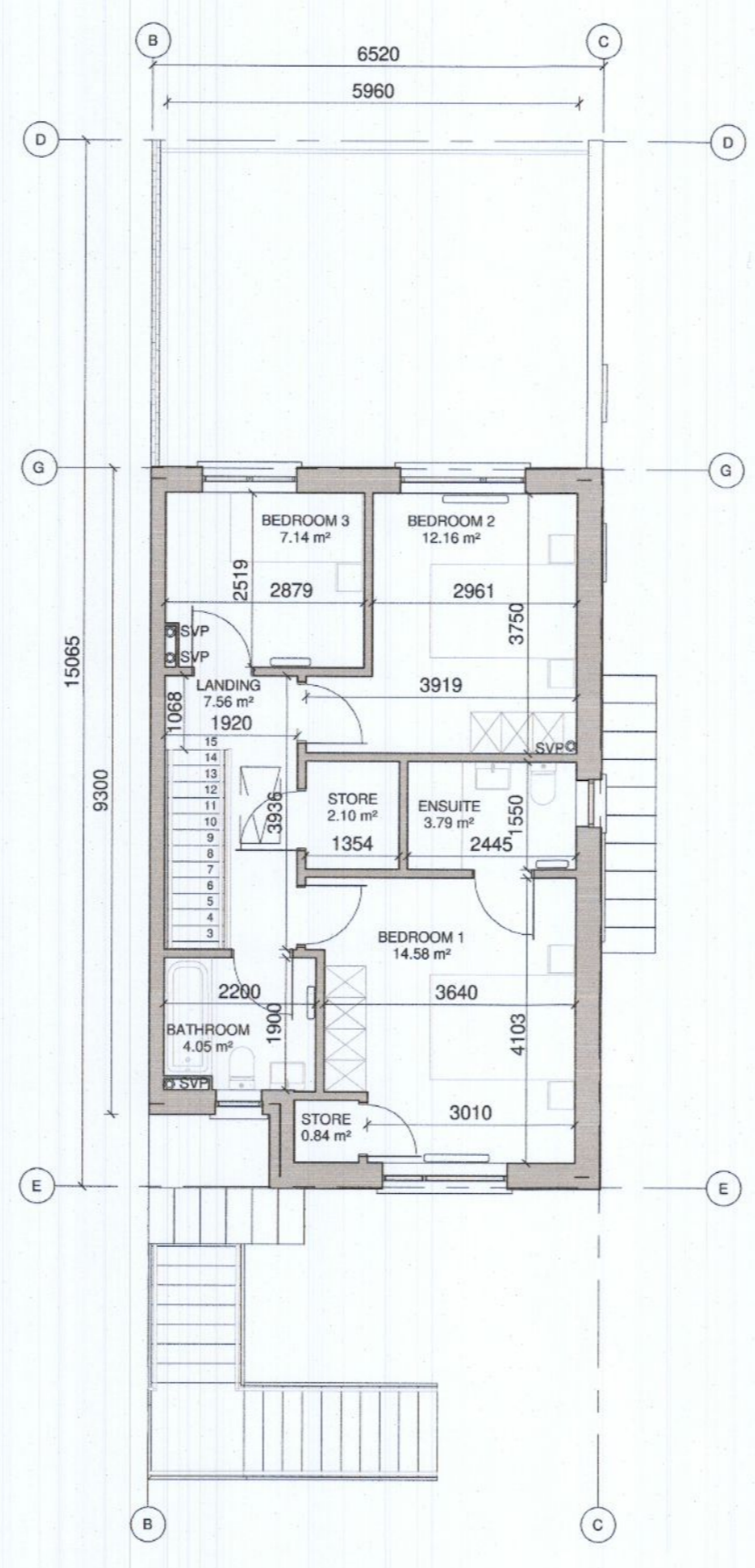


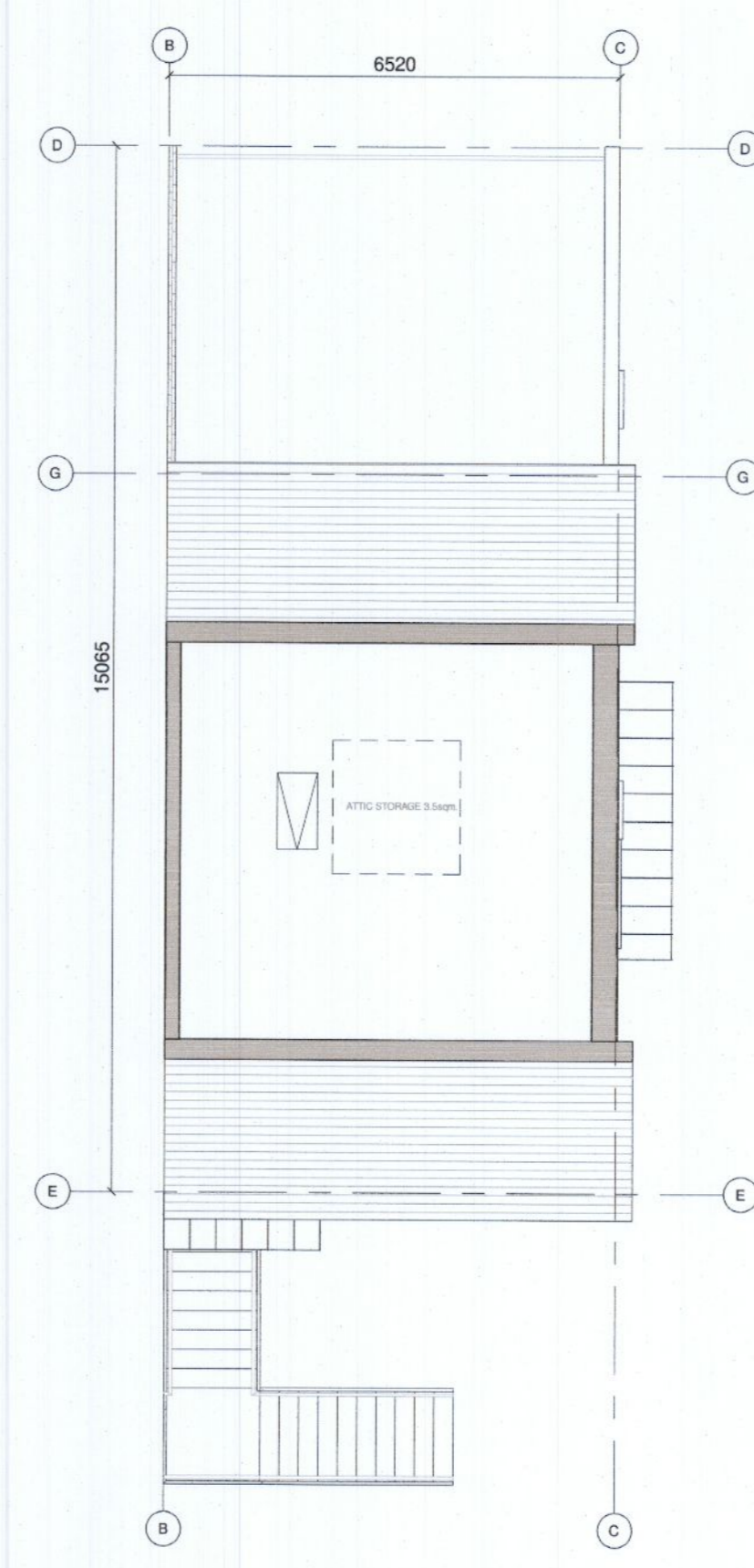
1 DUPLEX F6_GROUND FLOOR PLAN
1:100



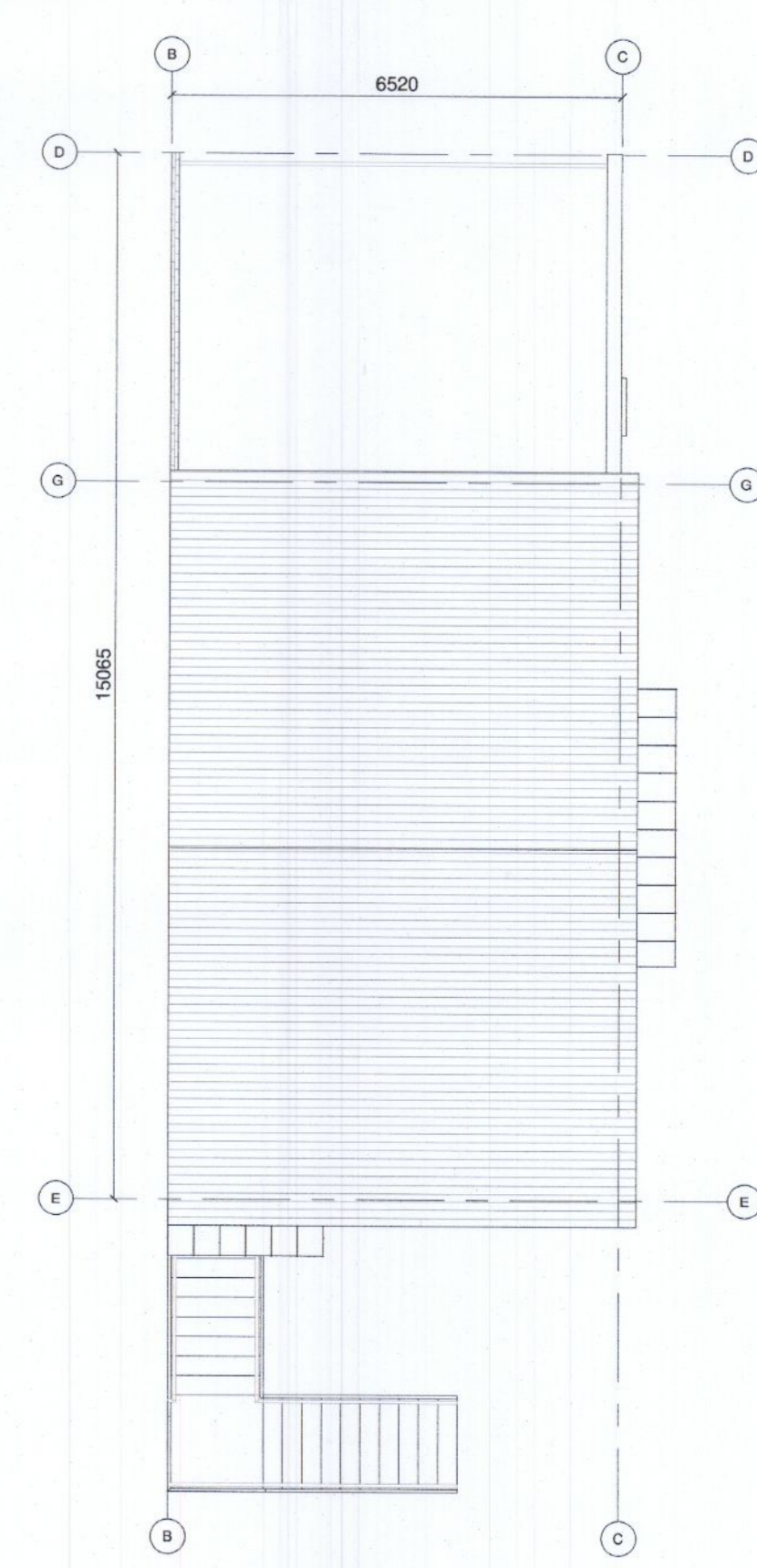
2 DUPLEX F6_FIRST FLOOR PLAN
1:100



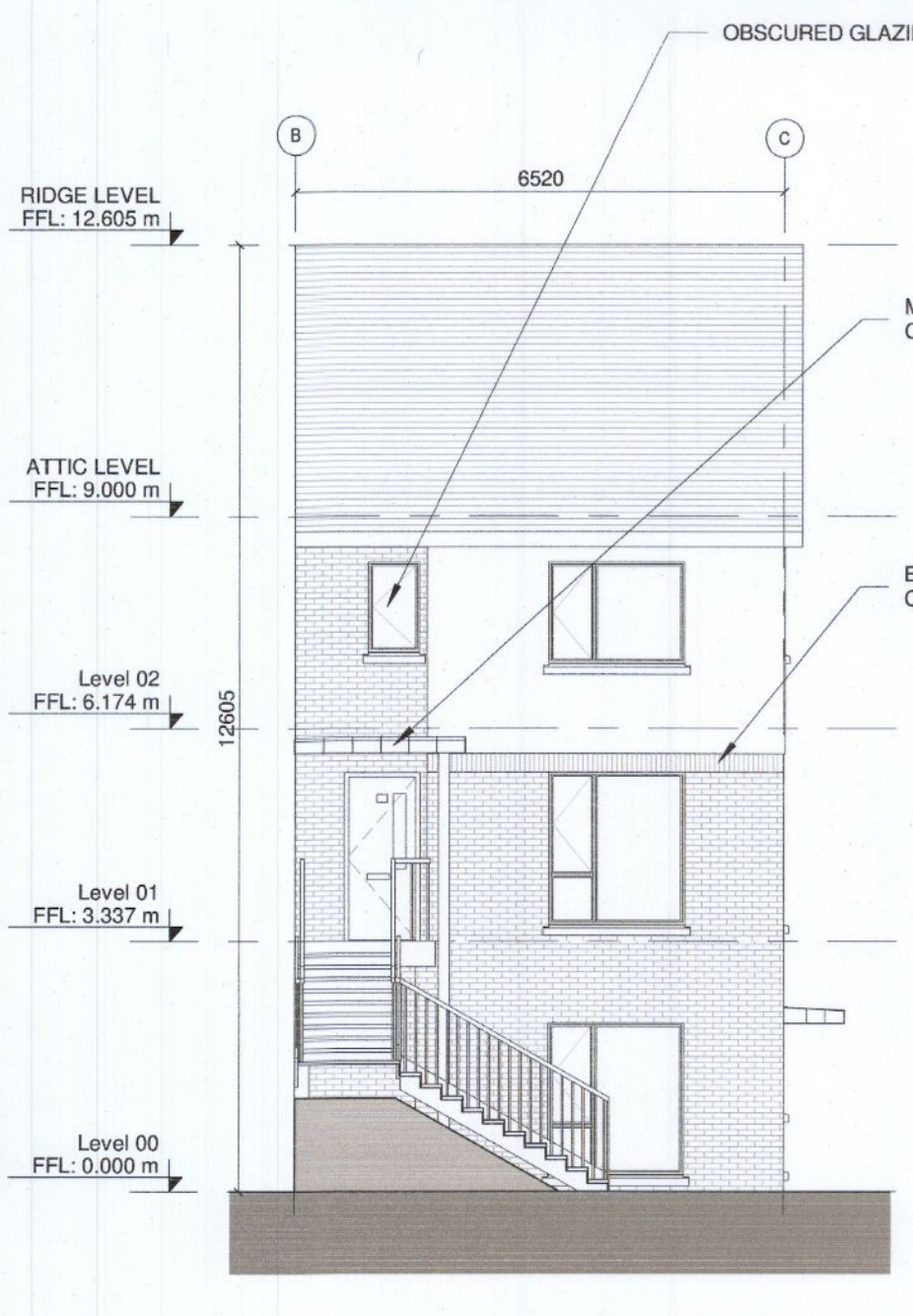
3 DUPLEX F6_SECOND FLOOR PLAN
1:100



4 DUPLEX F6_ATTIC PLAN
1:100



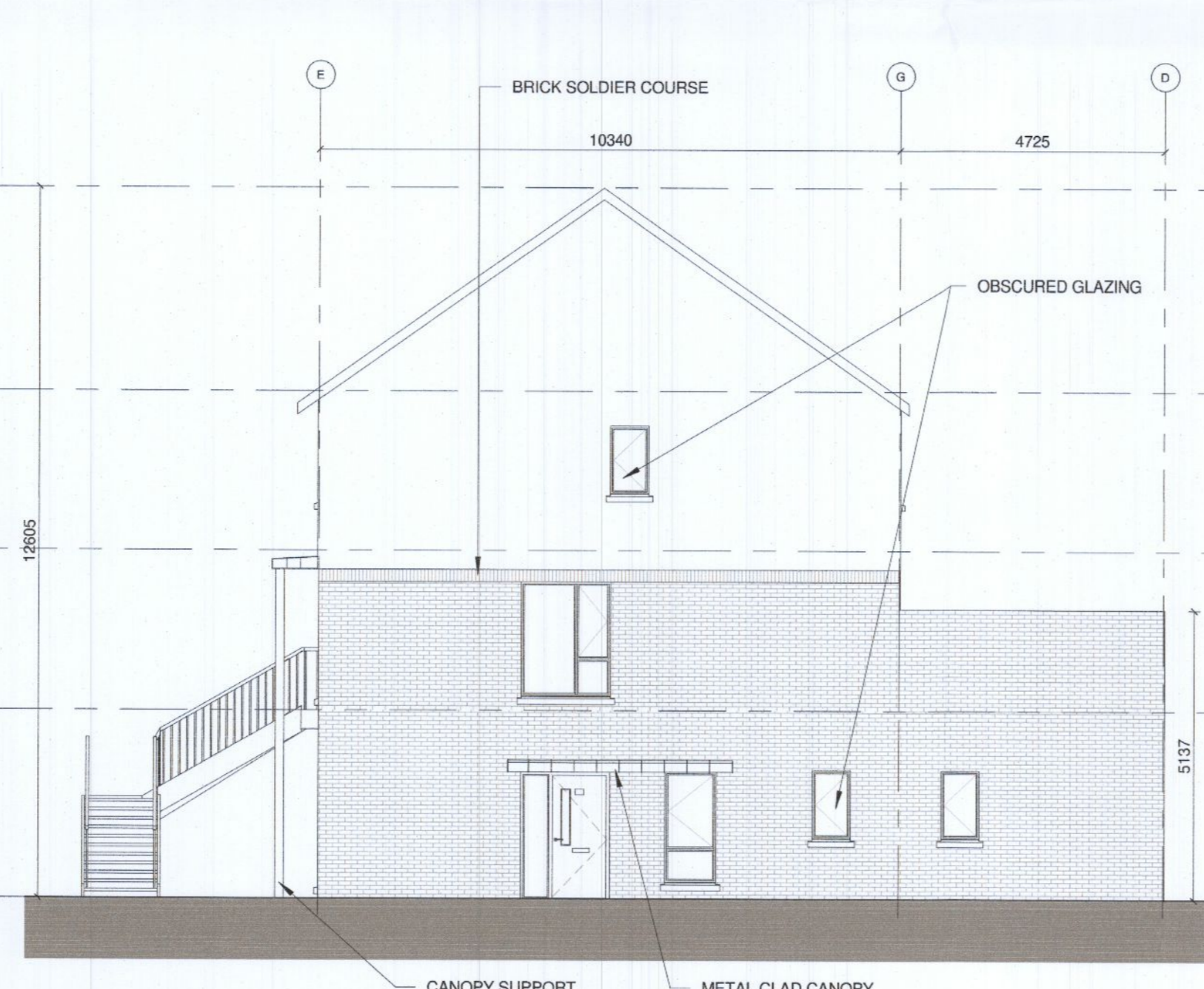
5 DUPLEX F6_ROOF PLAN
1:100



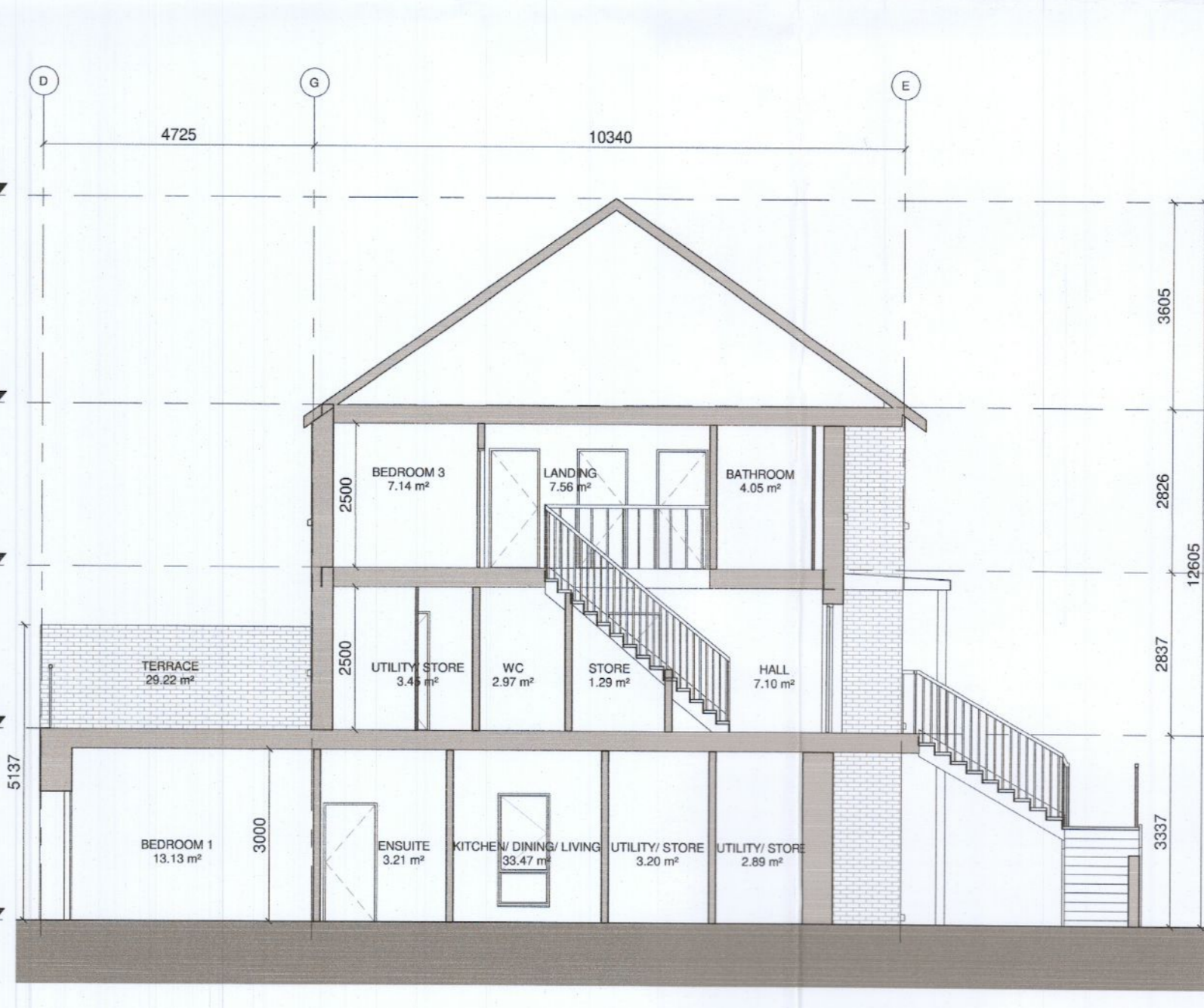
6 DUPLEX F6_FRONT ELEVATION
1:100



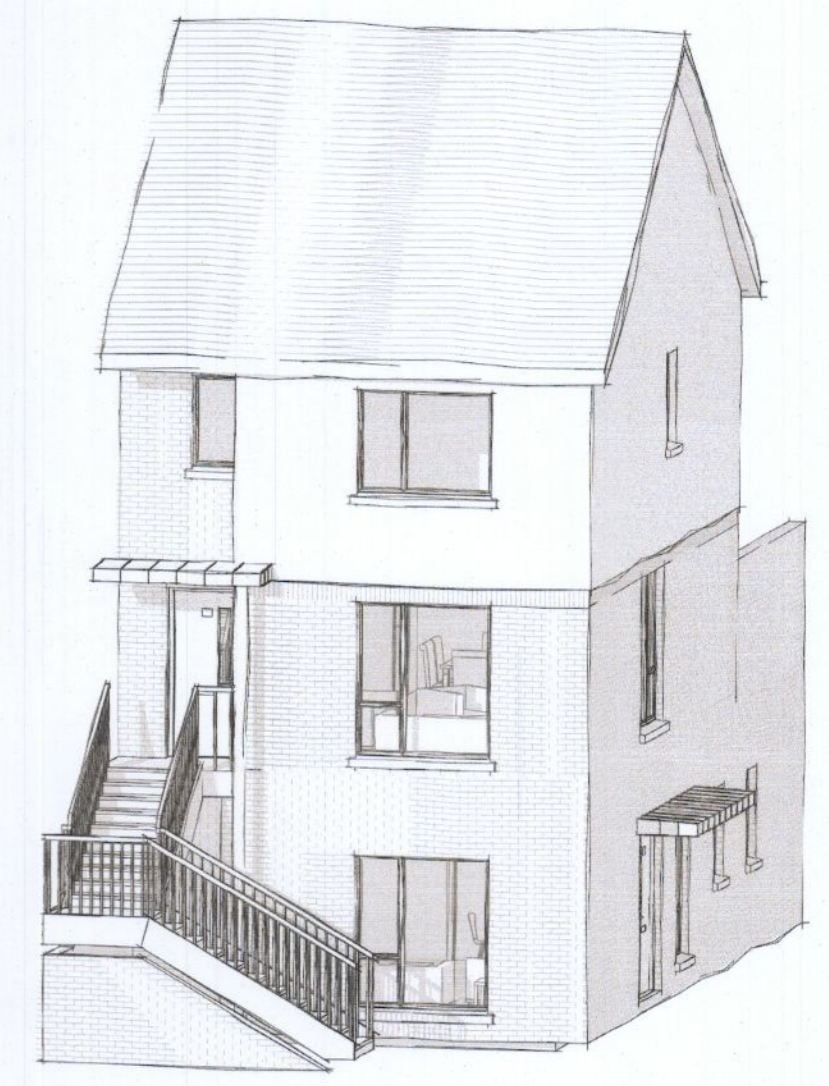
7 DUPLEX F6_REAR ELEVATION
1:100



8 DUPLEX F6_SIDE ELEVATION
1:100



9 DUPLEX F6_SECTION X-X
1:100



NOTES / LEGEND

TYPE DUPLEX F6:
TOTAL GIFA GROUND FLOOR UNIT = 79.2 sqm
TOTAL GIFA UPPER 2 FLOORS UNIT = 111 sqm

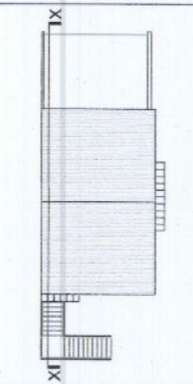
MATERIALS LEGEND:

- Walls: Selected brick / Self-coloured render; colour TBC
- Roof: Selected concrete flat roof tile
- Rain Water Goods: Dark-coloured fascia, soffit, gutter and downpipes
- Doors: Selected double-glazed system
Metal canopy as indicated on the drawings
- Windows: Selected double-glazed system
Reconstituted sills to front and visible gable facades
Concrete sills to rear
Obscure glazing to all bathroom / en-suite windows

GENERAL NOTE:

- Refer to site plans for the location and levels of these house types.
- House type numbering (i.e. XX.1, XX.2) refers to variations in material finishes to elevations and roof profiles, where applicable. Plans are the same where materials and roof profiles differ.

KEY PLAN



Rev: 00 Date: 26/09/2022 Description: RFI RESPONSE By: MOLA



Note
Do not scale.
Use figured dimensions only.
This drawing is to be read in conjunction with all relevant specifications and drawings.
All dimensions to be checked on site.
In the event of any discrepancies between drawings, the contractor is to inform the Architect immediately.
© COPYRIGHT This drawing or design may not be reproduced without permission

Stage:

PLANNING

Client: QUINTAIN DEVELOPMENTS IRELAND LTD
Project: TANDY'S LANE DEVELOPMENT PHASE 2, ADAMSTOWN, LUCAN, DUBLIN
Drawing: DUPLEX TYPE F6 - END OF TERRACE- @SIDE ENTRY
Date: JULY 2022 Status: Indicated @A1 Mt. Job No: 21024
Drawing No: TL2-2-02-PX-ZZ-DR-MOLA-AR-0475 Status: 02 Revision: 00