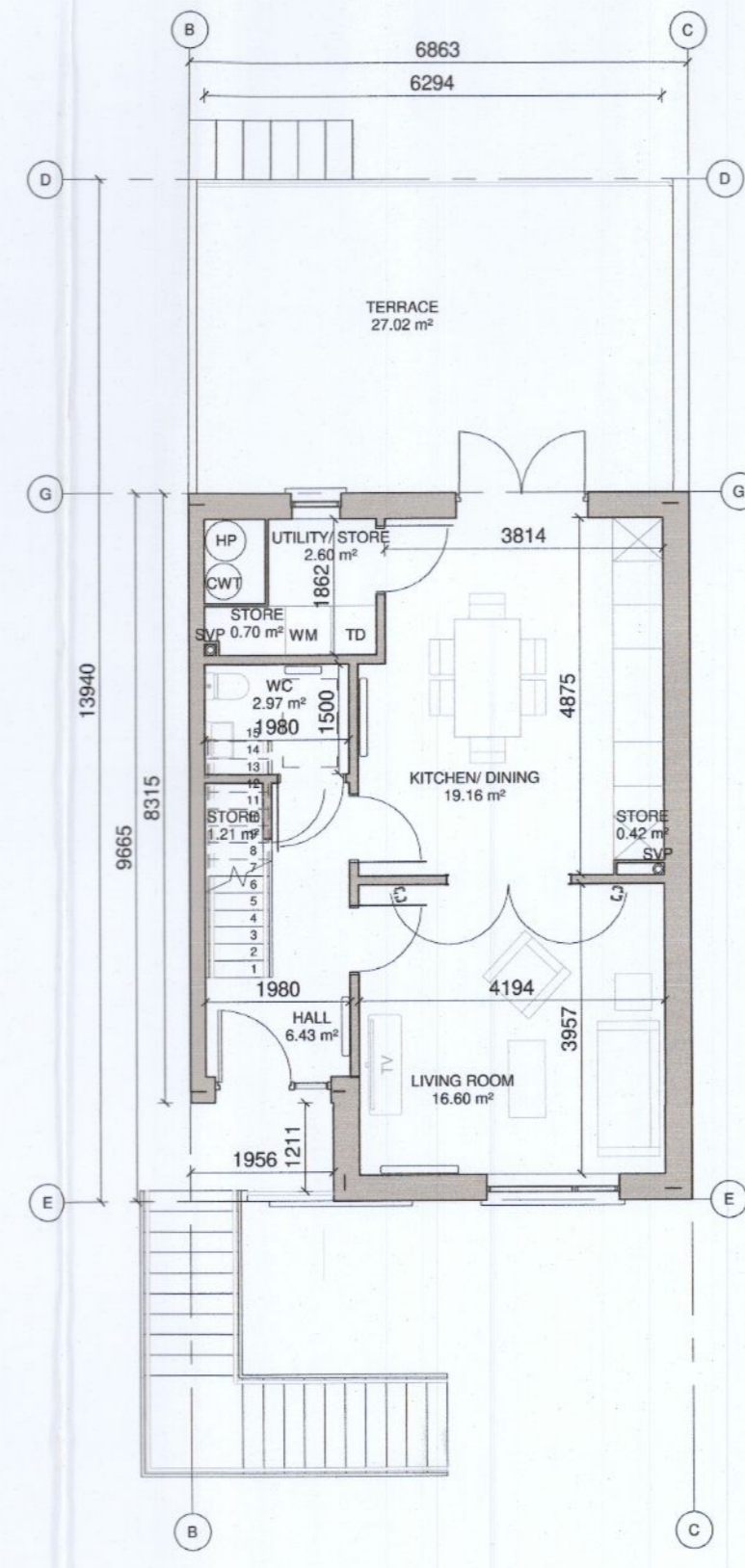
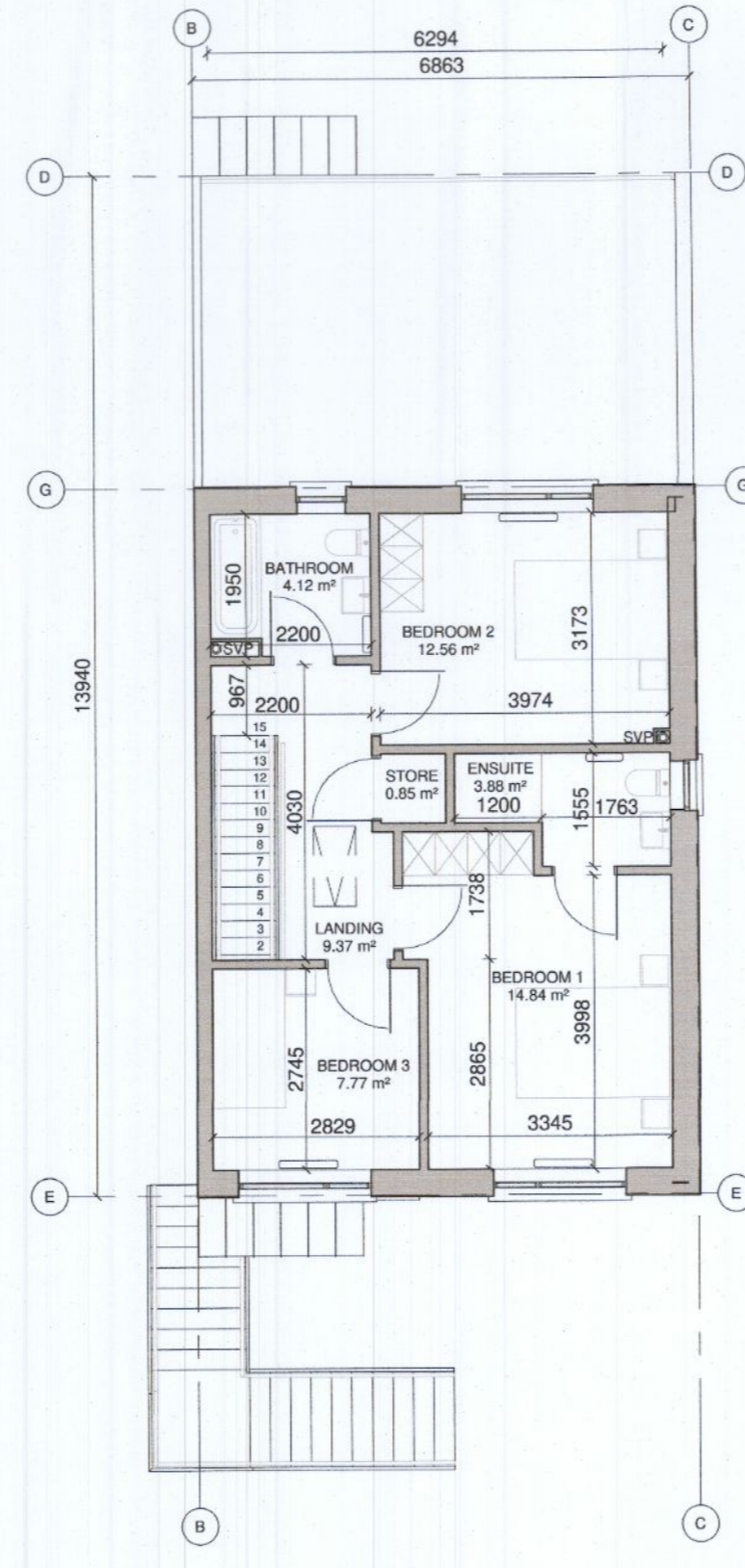


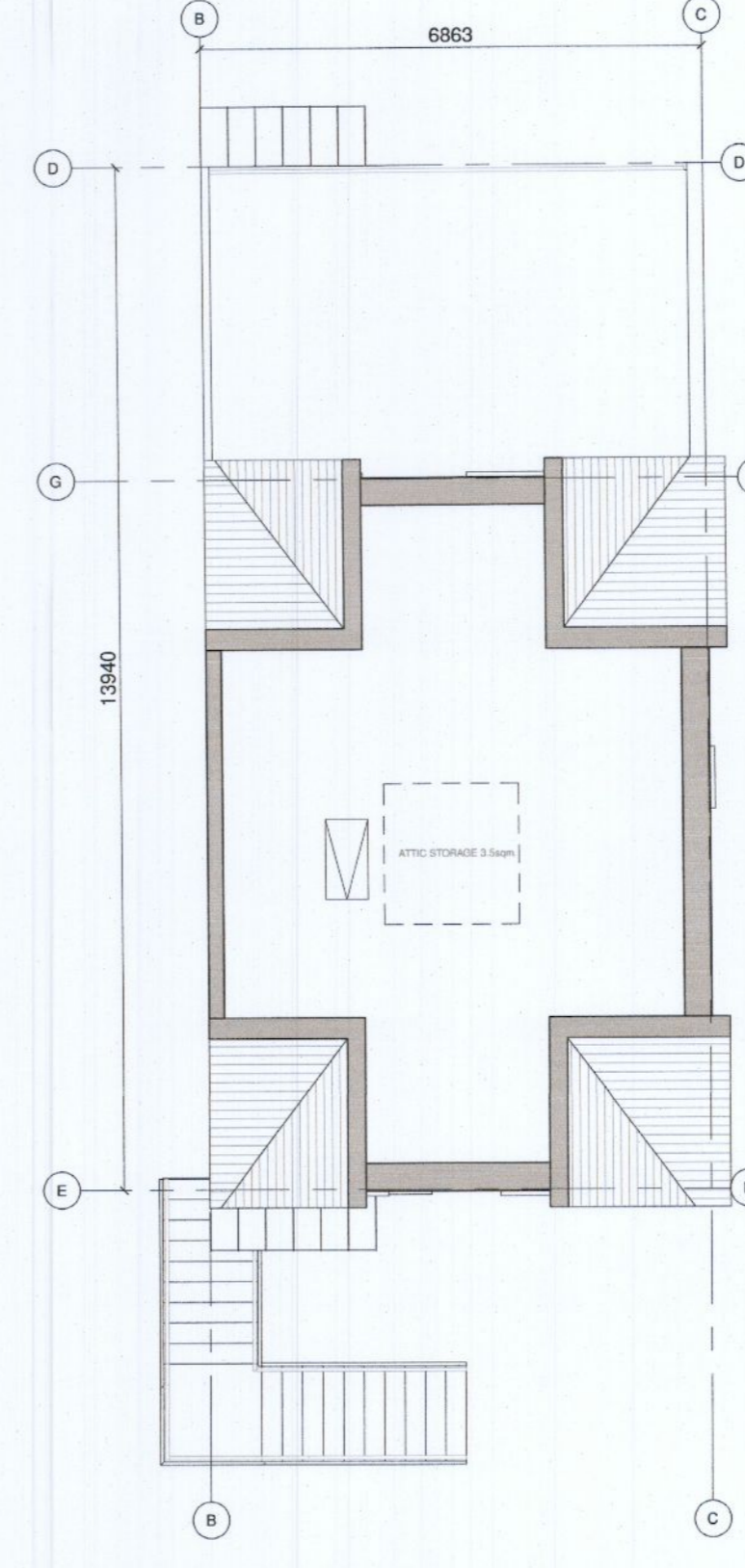
1 DUPLEX F2_GROUND FLOOR PLAN
1:100



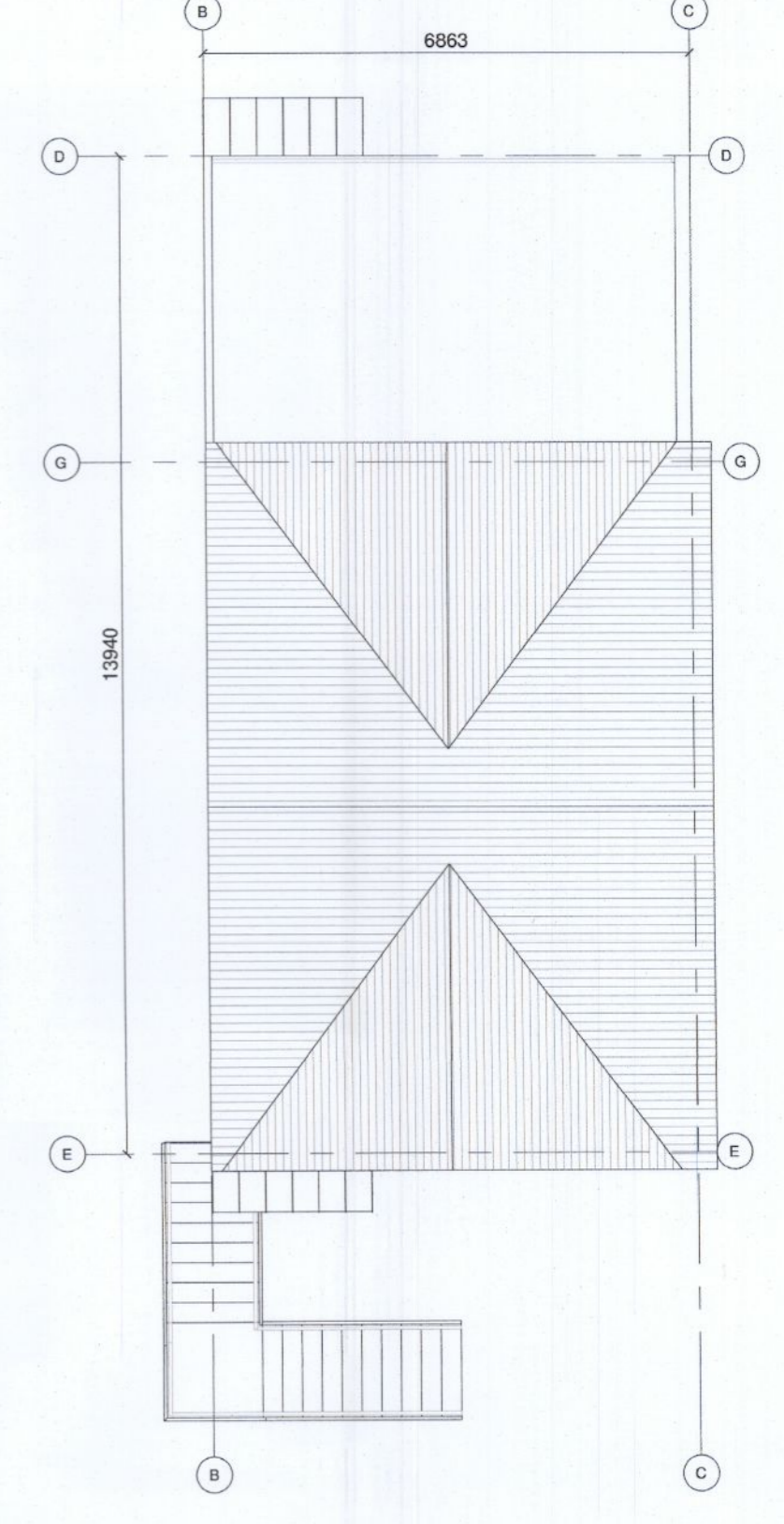
2 DUPLEX F2_FIRST FLOOR PLAN
1:100



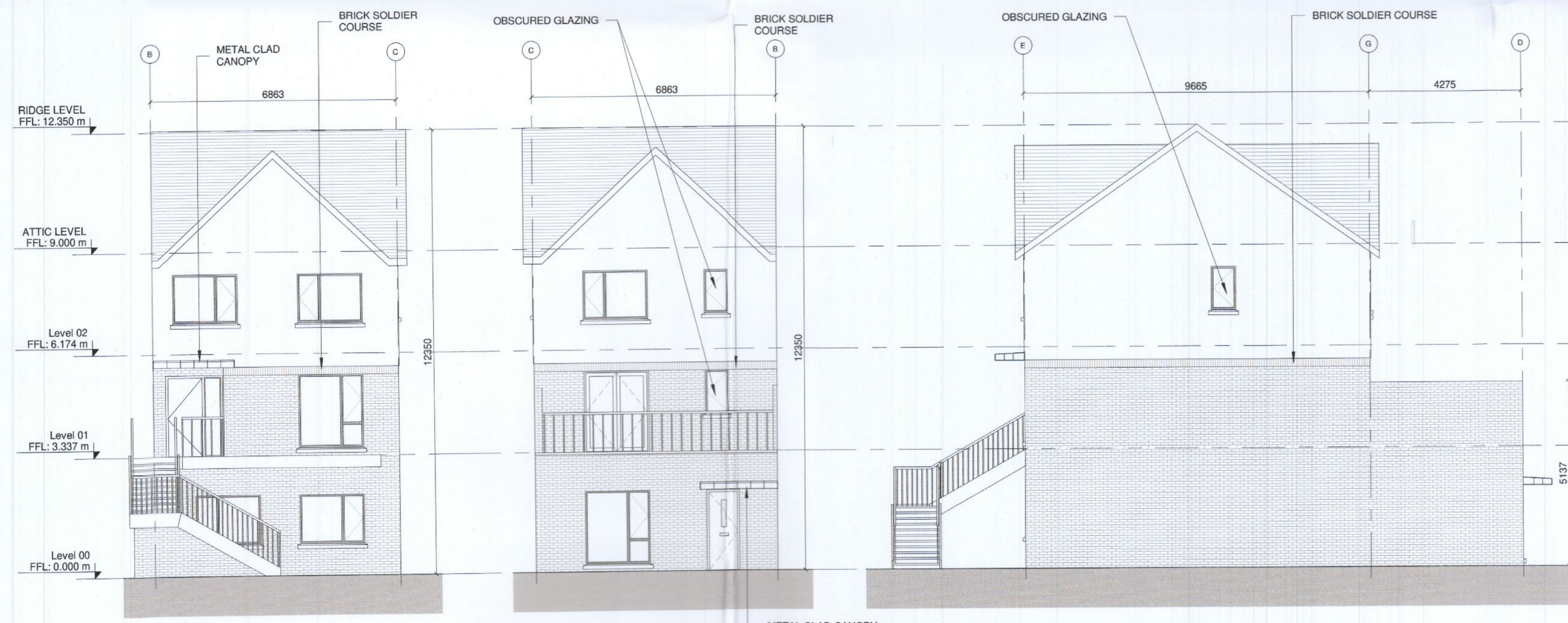
3 DUPLEX F2_SECOND FLOOR PLAN
1:100



4 DUPLEX F2_ATTIC PLAN
1:100



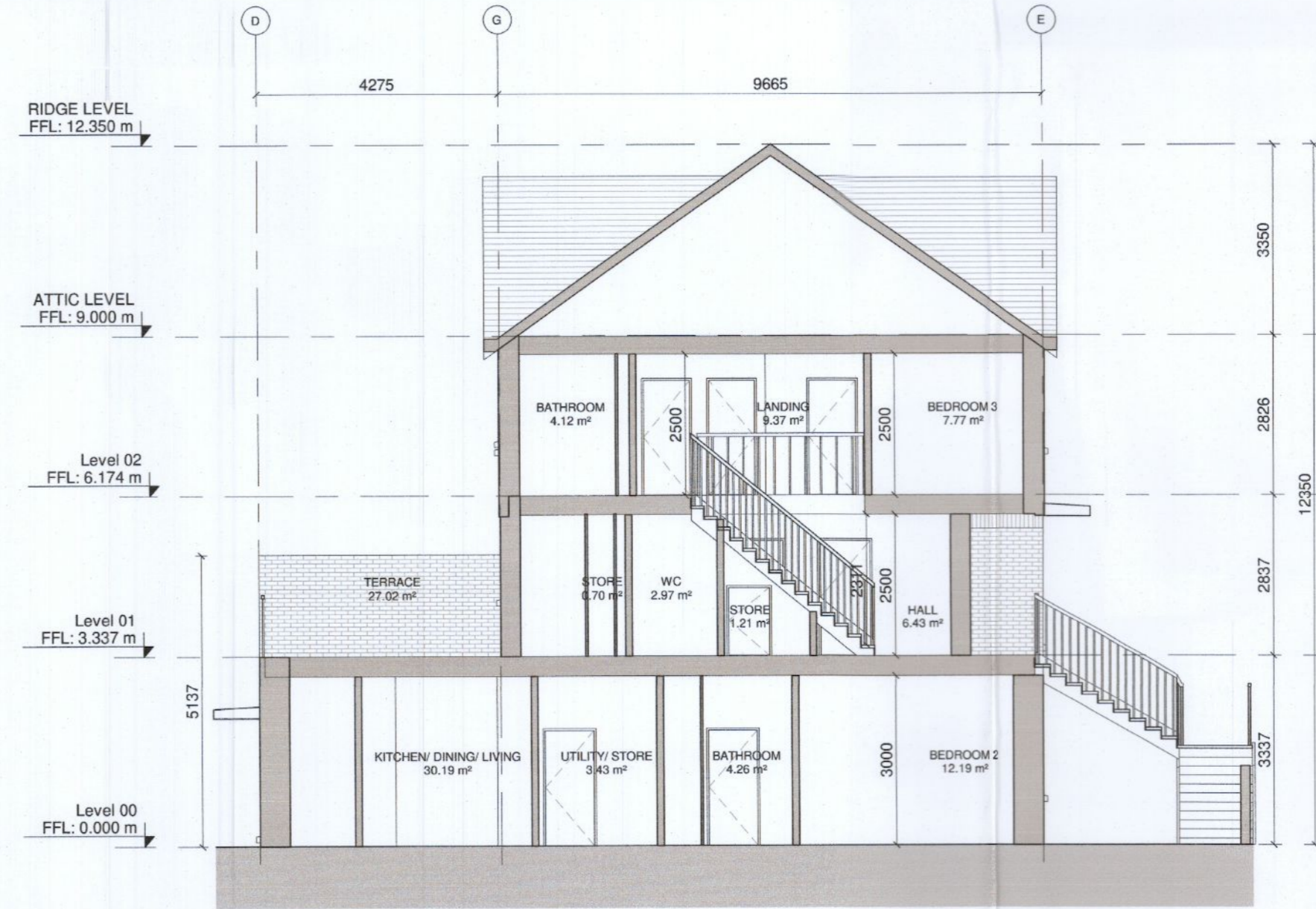
5 DUPLEX F2_ROOF PLAN
1:100



6 DUPLEX F2_FRONT ELEVATION
1:100

7 DUPLEX F2_REAR ELEVATION
1:100

8 DUPLEX F2_SIDE ELEVATION
1:100



9 DUPLEX F2_SECTION X-X
1:100



NOTES / LEGEND

TYPE DUPLEX F2:
TOTAL GIFA GROUND FLOOR UNIT = 79.3 sqm
TOTAL GIFA UPPER 2 FLOORS UNIT = 110 sqm

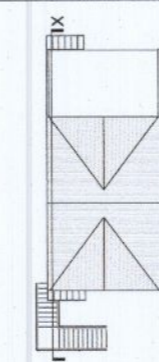
MATERIALS LEGEND:

- Walls: Selected brick / Self-coloured render; colour TBC
- Roof: Selected concrete flat roof tile
- Rain Water Goods: Dark-coloured fascia, soffit gutter and downpipes
- Doors: Selected double-glazed system
Metal canopy as indicated in the drawings
- Windows: Selected double-glazed system
Reconstituted sills to front and visible gable facades
Concrete sills to rear
Obscure glazing to all bathroom/ en-suite windows

GENERAL NOTE:

- Refer to site plans for the location and levels of these house types.
- House type numbering (i.e. XX-1, XX-2) refers to variations in material finishes to elevations and roof profiles, where applicable. Plans are the same where materials and roof profiles differ.

KEY PLAN



Rev: 00 Date: 25/06/2022 Description: RFI RESPONSE

By: MOLA



Note
Do not scale.
Use figured dimensions only.
This drawing is to be read in conjunction with all relevant specifications and drawings.
All dimensions to be checked on site.
In the event of any discrepancies between drawings, the contractor is to inform the Architect immediately.
© COPYRIGHT This drawing or design may not be reproduced without permission

Stage:

PLANNING

Client: QUINTAIN DEVELOPMENTS IRELAND LTD
Project: TANDY'S LANE DEVELOPMENT PHASE 2, ADAMSTOWN, LUCAN, DUBLIN
Drawing: DUPLEX TYPE F2 - END OF TERRACE
Date: JULY 2022
Scale: Indicated @A1
Int. Job No: 21024
Drawing No: TL2-2-02-PX-ZZ-DR-MOLA-AR-0455
Status: 02
Revision: 00