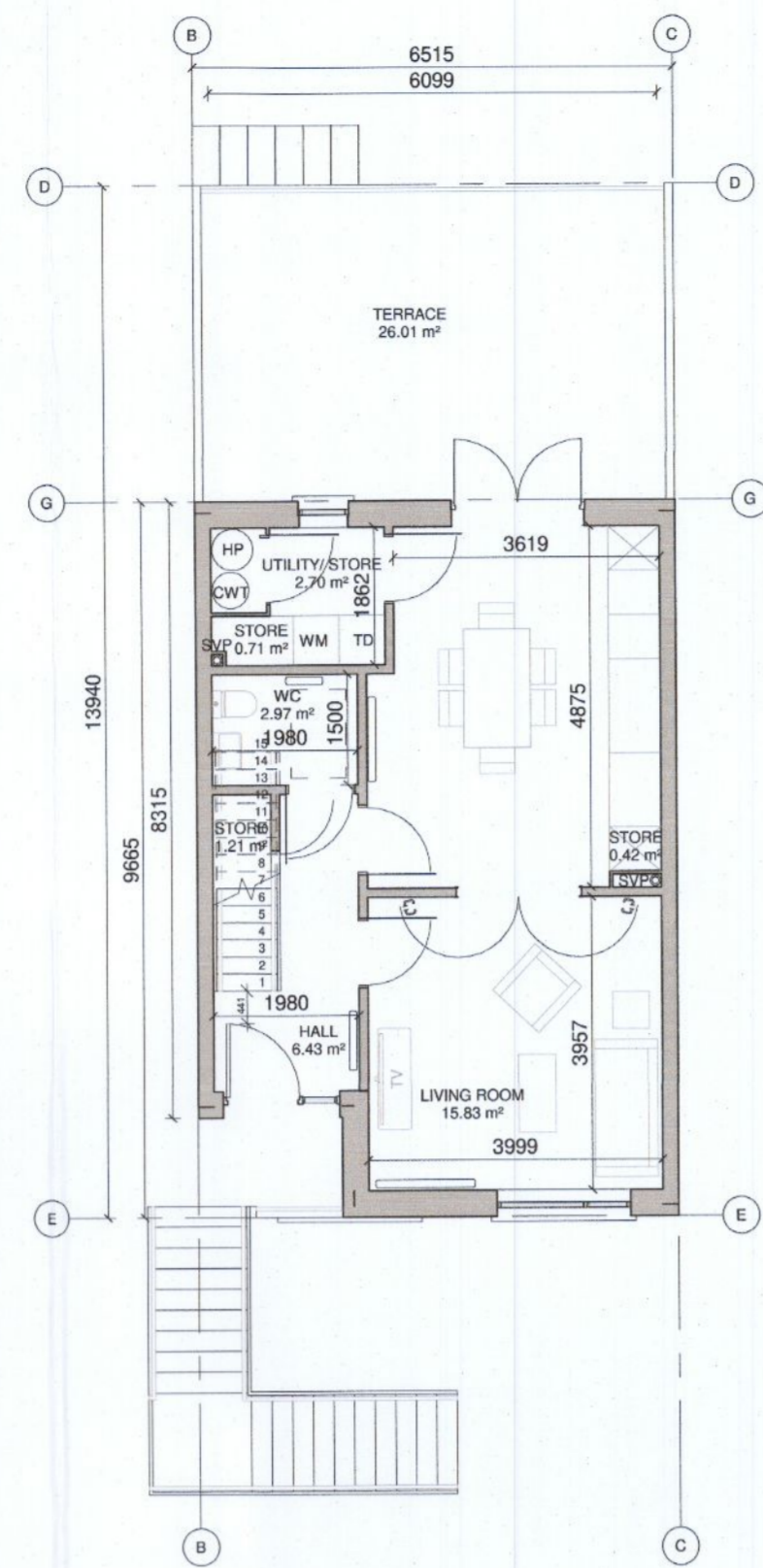
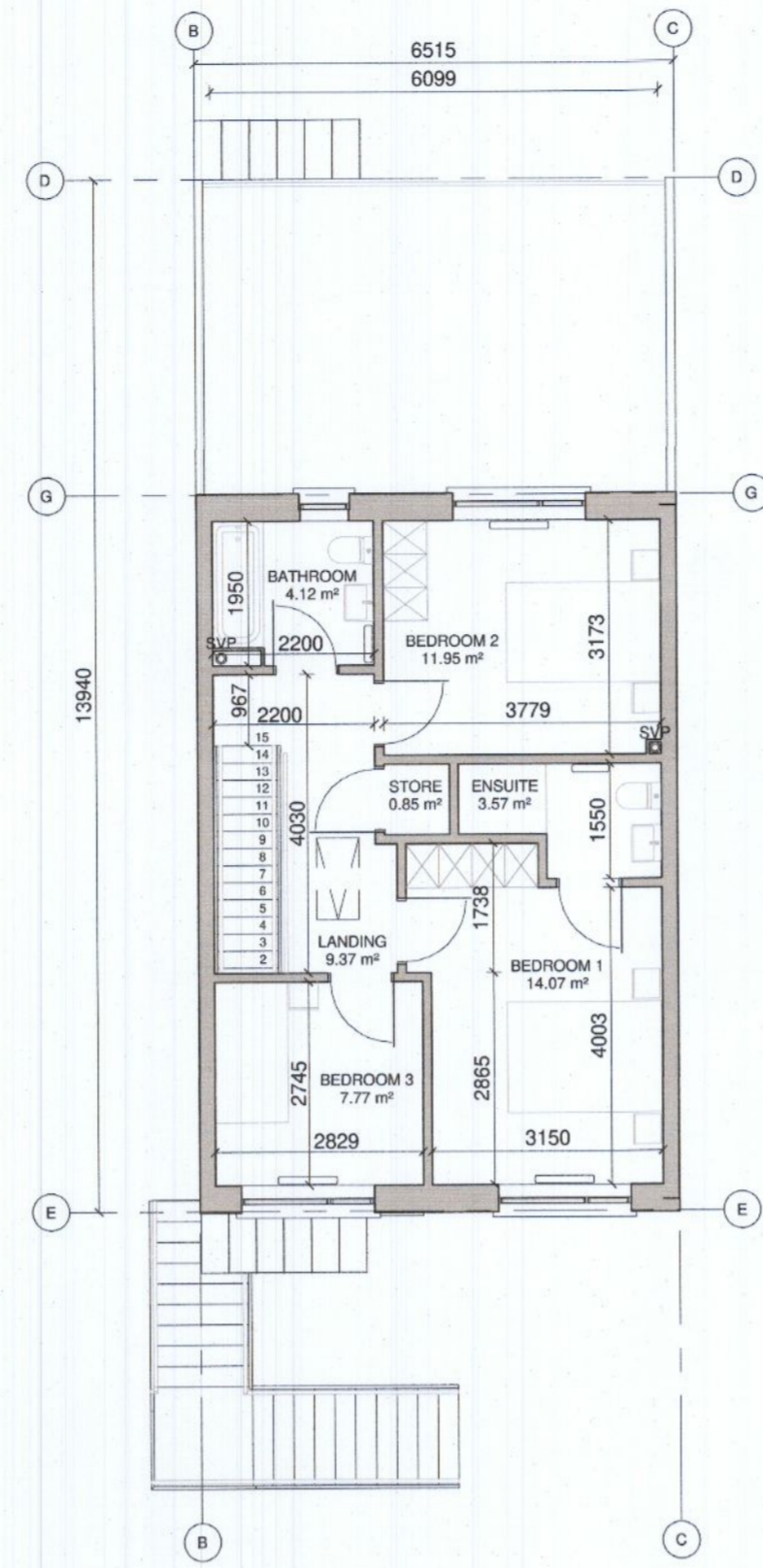


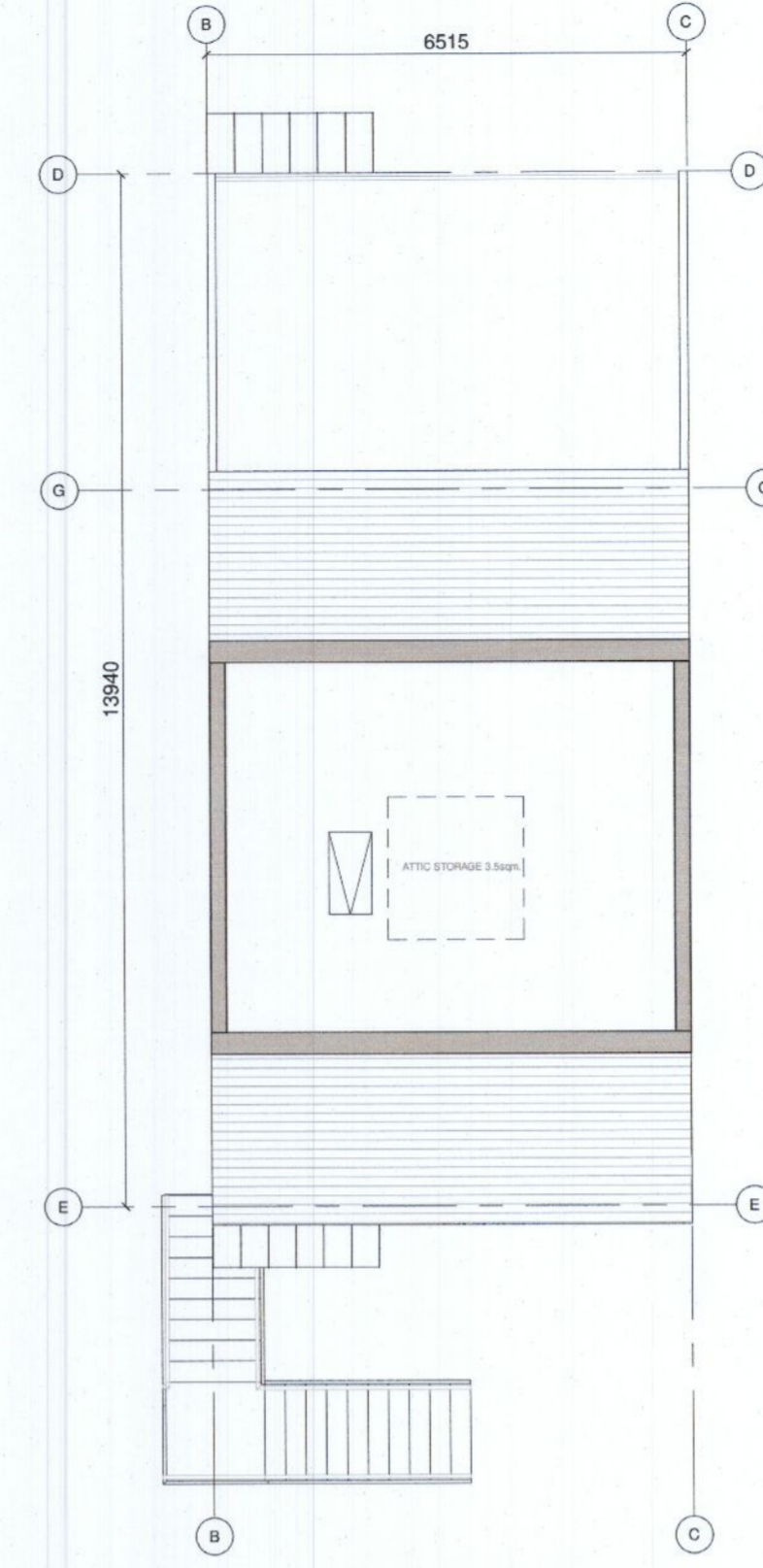
1 DUPLEX F1_GROUND FLOOR PLAN
1:100



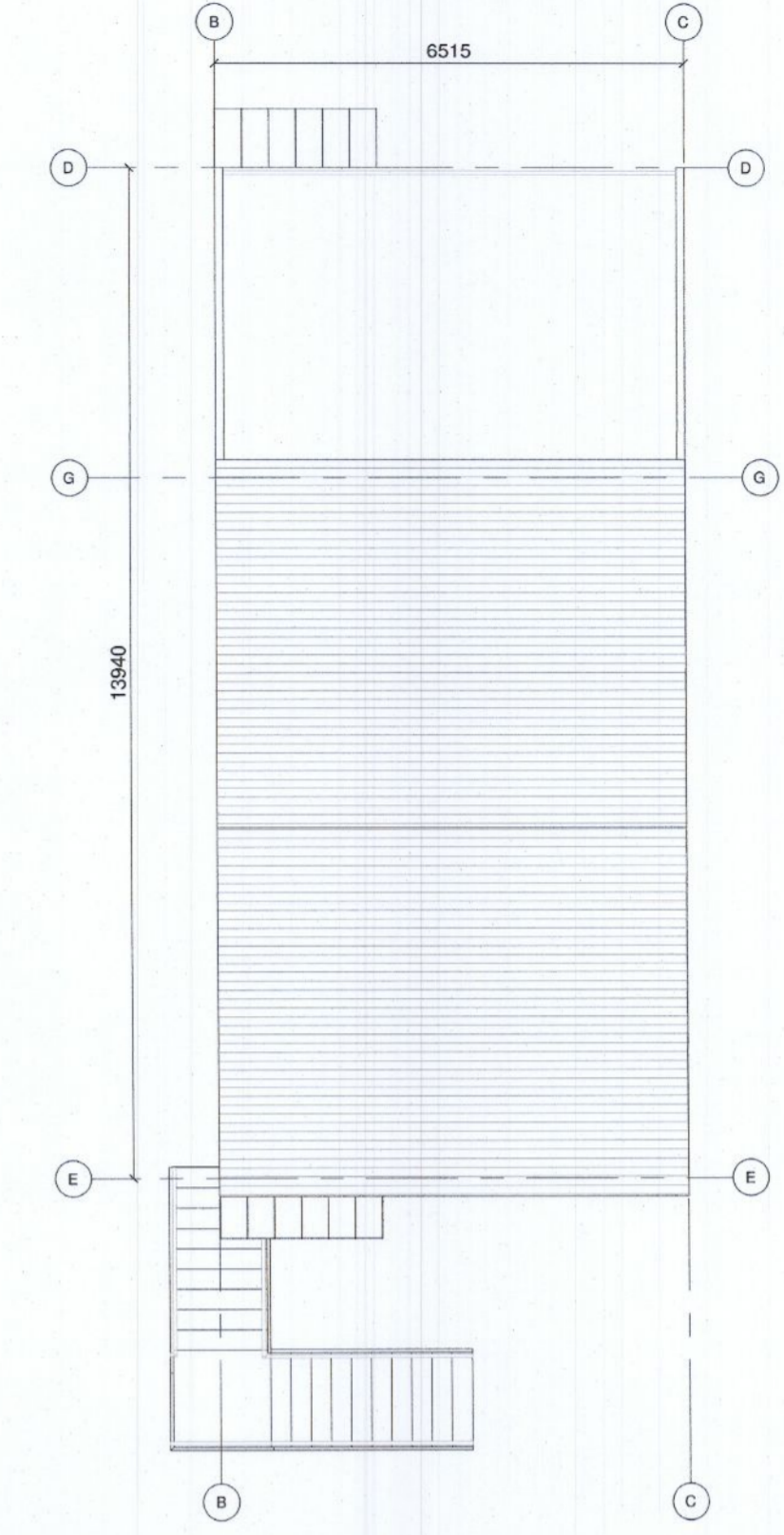
2 DUPLEX F1_FIRST FLOOR PLAN
1:100



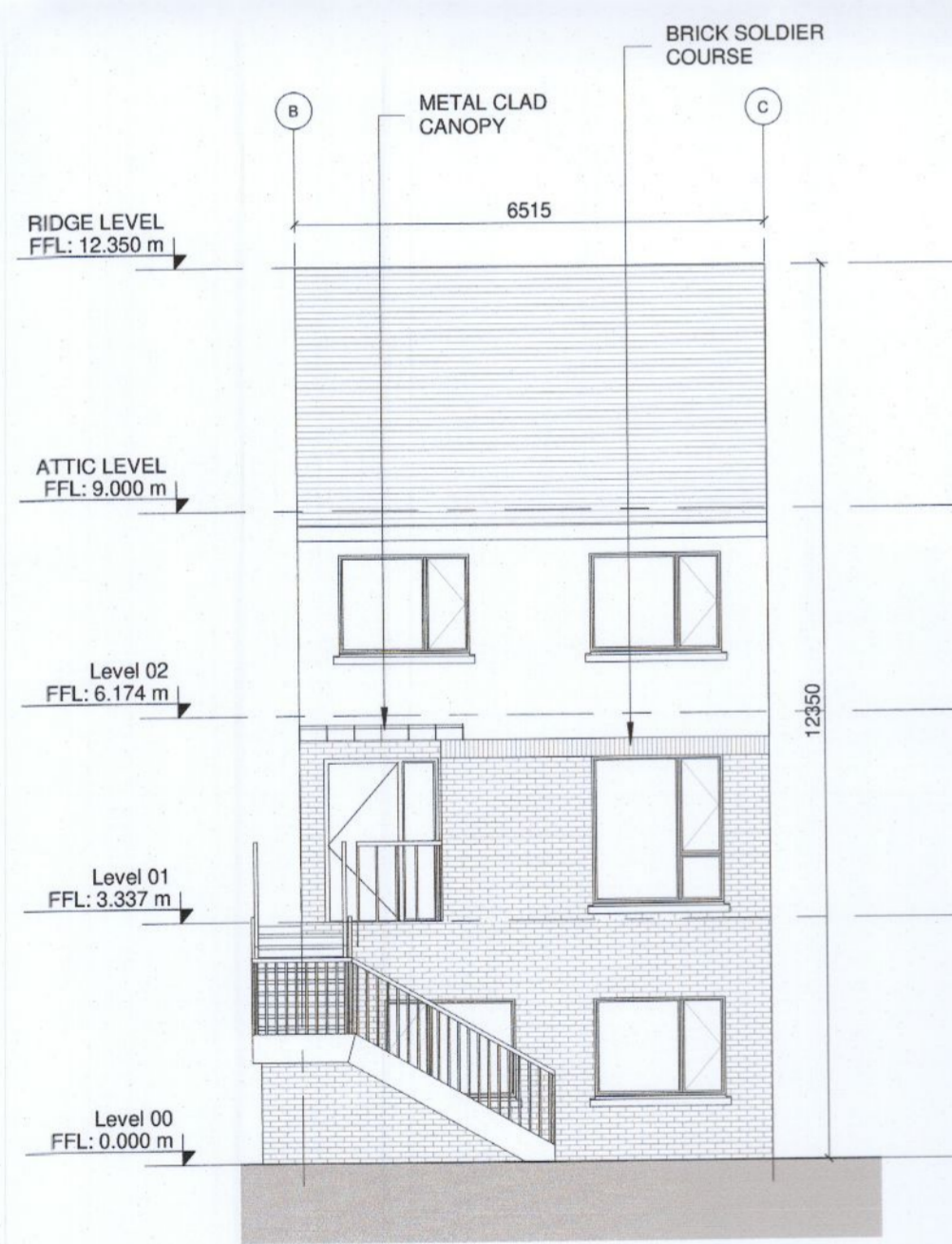
3 DUPLEX F1_SECOND FLOOR PLAN
1:100



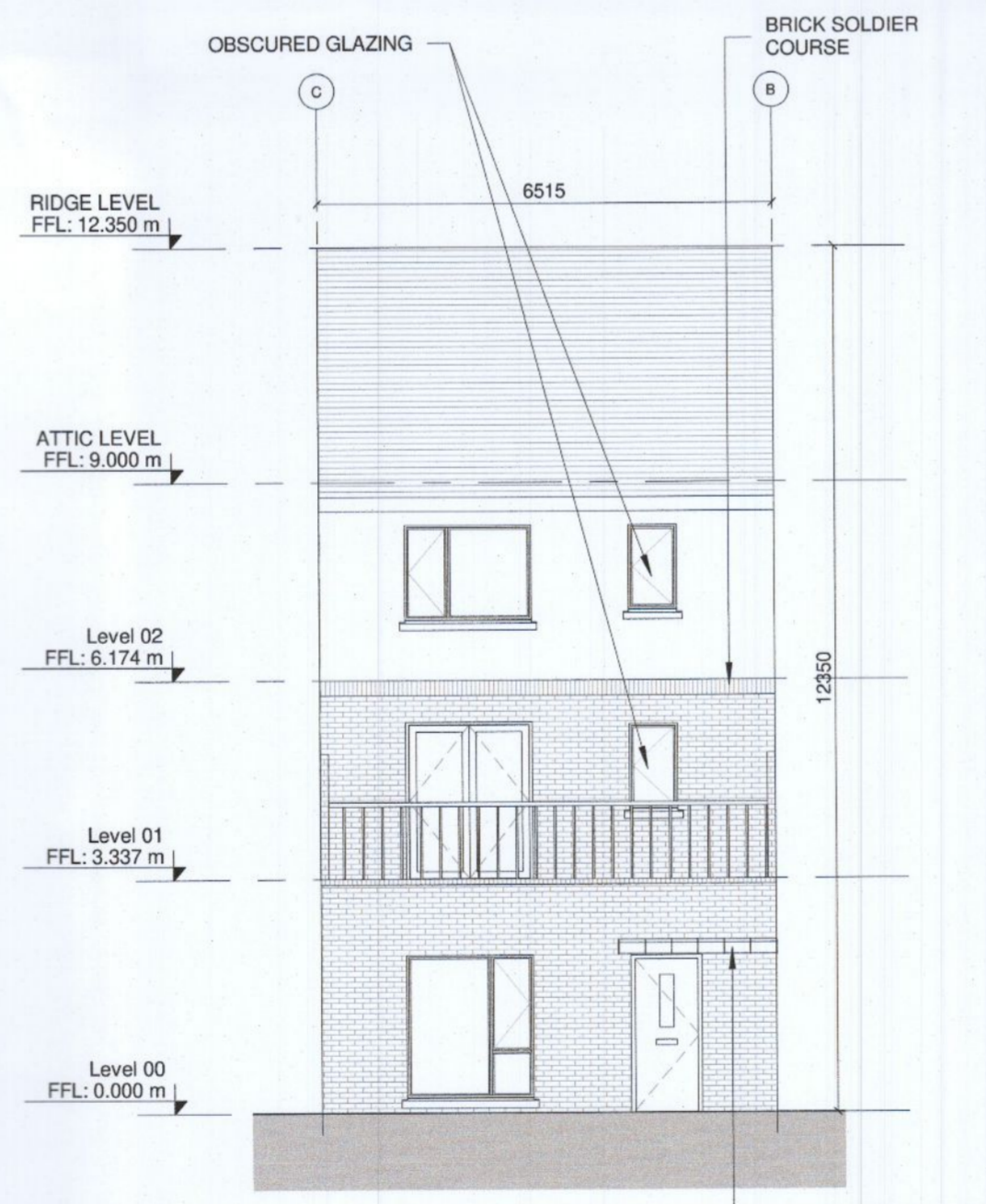
4 DUPLEX F1_ATTIC PLAN
1:100



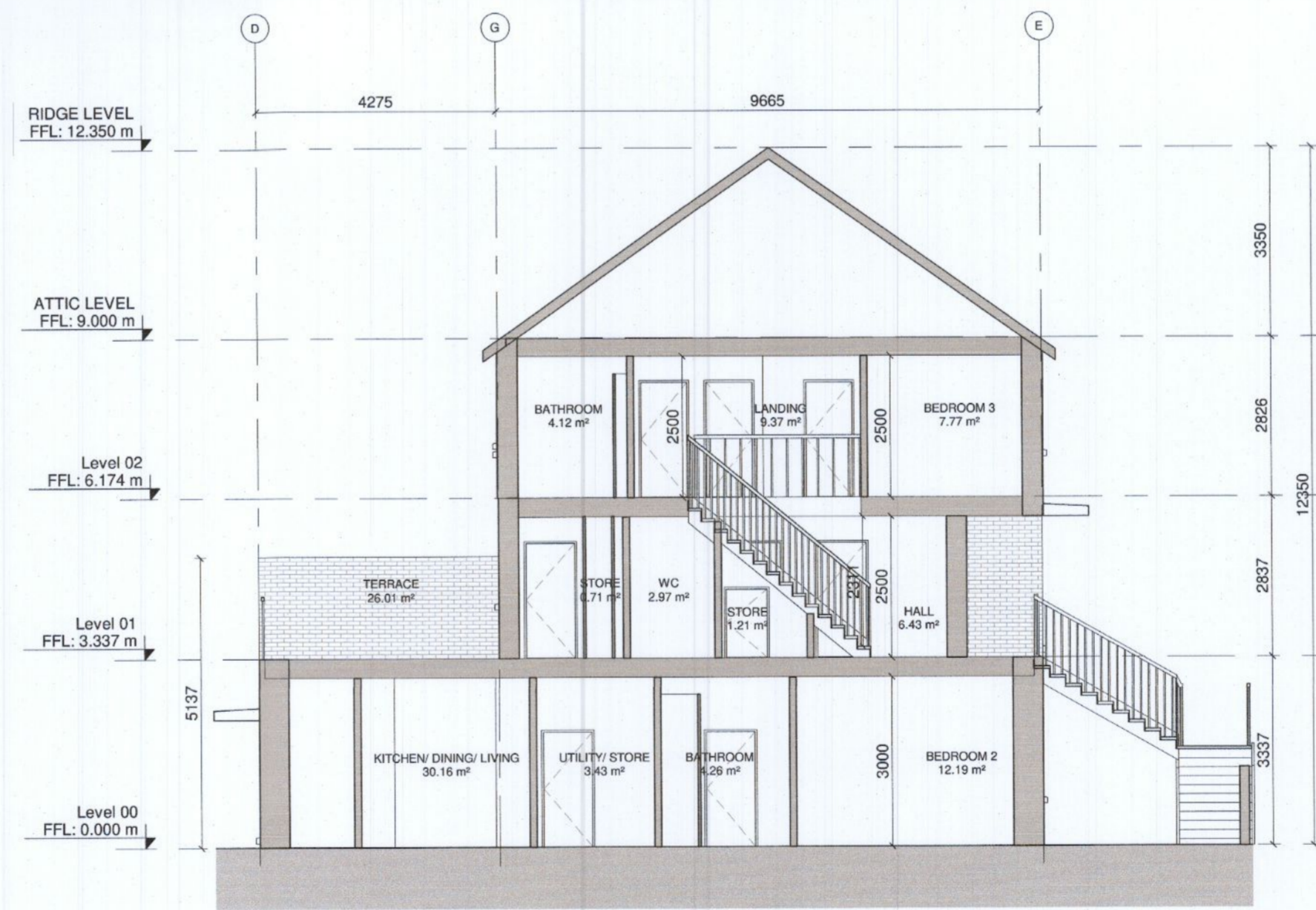
5 DUPLEX F1_ROOF PLAN
1:100



6 DUPLEX F1_FRONT ELEVATION
1:100



7 DUPLEX F1_REAR ELEVATION
1:100



8 DUPLEX F1_SECTION X-X
1:100



NOTES / LEGEND

TYPE DUPLEX F1:

TOTAL GIFA GROUND FLOOR UNIT = 79.3 sqm

TOTAL GIFA UPPER 2 FLOORS UNIT = 106.7 sqm

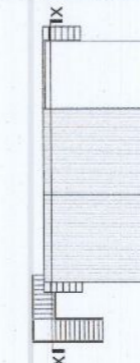
MATERIALS LEGEND:

- Walls: Selected brick / Self-coloured render; colour TBC
- Roof: Selected concrete flat roof tile
- Rain Water Goods: Dark-coloured fascia, soffit, gutter and downpipes
- Doors: Selected double-glazed system
Metal canopy as indicated on the drawings
- Windows: Selected double-glazed system
Reconstituted sills to front and visible gable facades
Concrete sills to rear
Obscure glazing to all bathroom / en-suite windows

GENERAL NOTE:

- Refer to site plans for the location and levels of these house types.
- House type numbering (i.e. XX.1, XX.2) refers to variations in material finishes to elevations and roof profiles, where applicable. Plans are the same where materials and roof profiles differ.

KEY PLAN



Rev: 00 Date: 26/08/2022 Description: RFI RESPONSE

By: MOLA

MOLA 2 Donnybrook Road,
Donnybrook,
Dublin 4, Ireland
Telephone: +353 1 218 3900
www.molaarchitecture.com

Note
Do not scale.
Use figured dimensions only.
This drawing is to be read in conjunction with all relevant specifications and drawings.
All dimensions to be checked on site.
In the event of any discrepancies between drawings, the contractor is to inform the Architect immediately.
© COPYRIGHT This drawing or design may not be reproduced without permission

Stage:

PLANNING

Client: QUINTAIN DEVELOPMENTS IRELAND LTD

Project: TANDY'S LANE DEVELOPMENT PHASE 2, ADAMSTOWN, LUCAN, DUBLIN

Drawing: DUPLEX TYPE F1-MID TERRACE

Date: JULY 2022 Status: Indicated @A1 Int. Job No: 21024

Drawing No: TL2-2-02-PX-ZZ-DR-MOLA-AR-0450 Status: 02 Revision: 00