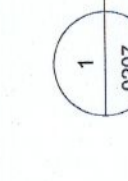


1 Proposed Contiguous Elevation D-D 1:200 Part A

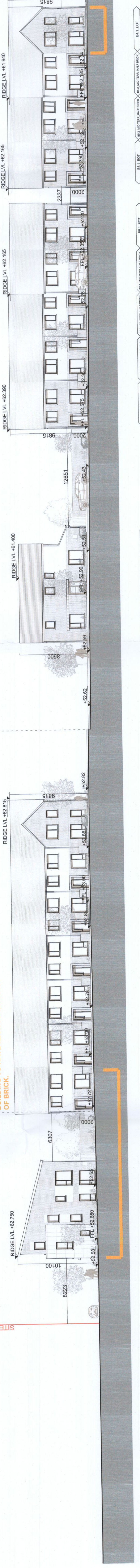


RFI 3B: LANDMARK UNIT (A5-43) REVISED TO IMPROVE WAYFINDING

SECTION ADJUSTMENT POINT

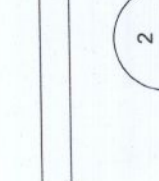
RFI 1: UNITS ADJACENT TO LANDMARK BUILDING TO HAVE REVISED QUANTITY OF BRICK.

RFI 3B: HOUSE A5-6 CHANGED FOR PASSIVE SURVEILLANCE. FRONT ENTRY UNIT PREVIOUSLY PROPOSED IS NOW SIDE ENTRY.



BLOCK A5

2 Proposed Contiguous Elevation D-D 1:200 Part A



SECTION ADJUSTMENT POINT

RFI 3A AND RFI 3B: BLOCK A5 REVISSED TO IMPROVE WAYFINDING. UNITS ADJACENT TO WESTERN PARK AND TO ACCOMMODATE UPGRADED EAST-WEST LINK. 3-BAND DUPLEX BLOCKS INCLUDED TO RETAIN THE SAME DENSITY. UNITS ADJACENT TO LANDMARK BUILDING TO HAVE REVISED QUANTITY OF BRICK.

SECTION ADJUSTMENT POINT

NOTE: LANDMARK DUPLEX UNIT (A3-1213) TO IMPROVE WAYFINDING

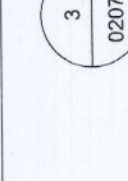
SECTION ADJUSTMENT POINT

BLOCK A3 UPDATED TO ACCOMMODATE THE DUPLEX UNITS.

RFI 3B: HOUSE A5-11 CHANGED FOR PASSIVE SURVEILLANCE



3 Proposed Contiguous Elevation D-D 1:200 Part B



BLOCK A3

4 Proposed Contiguous Elevation D-D 1:200 Part C

NOTES / LEGEND

- SITE BOUNDARY
- EXTENT OF REVISIONS TO CONTIGUOUS ELEVATIONS

Rev.	Date	Description	By	Check
001	2024-04-12	ISSUED FOR RFI	AN	AN
002	2024-04-12	ISSUED FOR RFI	AN	AN

Company that completed this drawing: MOLA
 Project: QUANTAN DEVELOPMENT PHASE 2
 Location: QUANTAN, ADAMSTOWN, VIC, AUSTRALIA
 Date: APR 22
 Scale: 1:200 (1:500@A0)
 Drawing No: LC-202-SW-XX-DR-MOLA-A5-0207

Do not scale
 This drawing is to be read in conjunction with all relevant information.
 All drawings to be checked on site.
 All drawings to be checked on site.
 To submit the architect immediately.
 © Copyright. The drawing or design may not be reproduced without permission.
 MOLA
 PLANNING