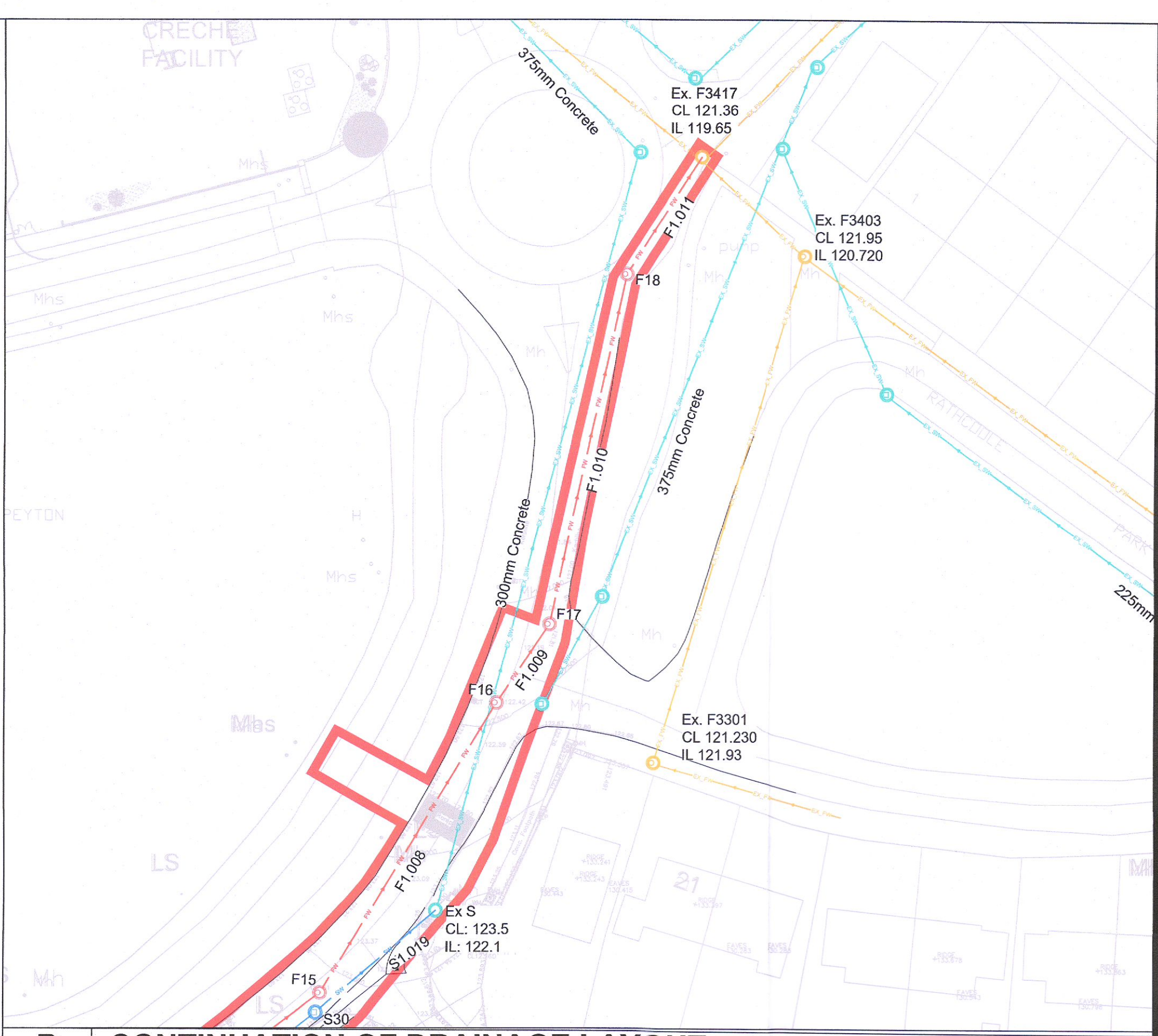
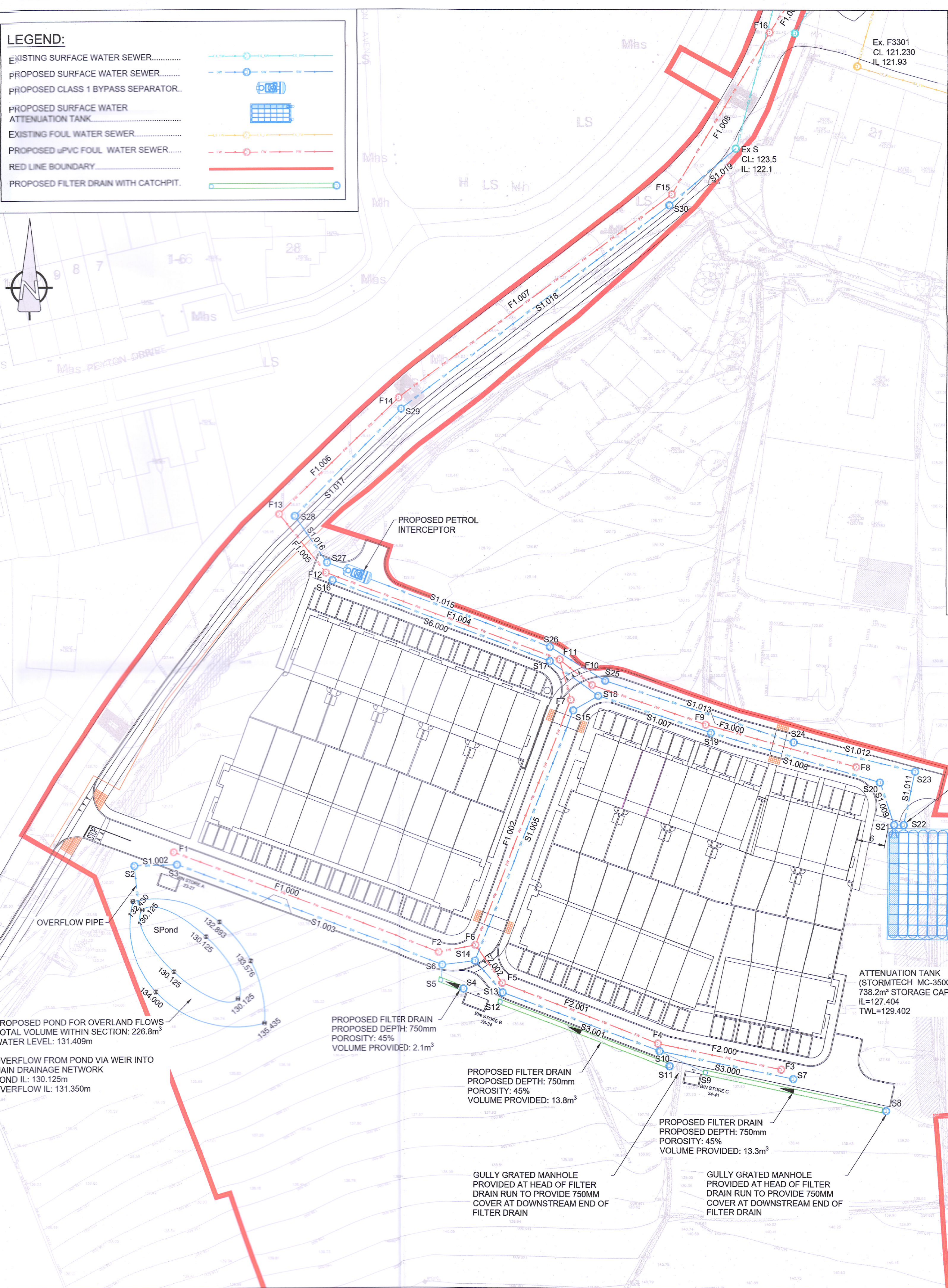
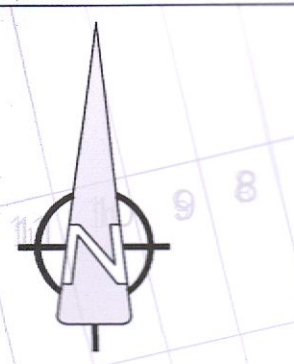


ISO A1 94mm x 841mm
 Approved: LS
 Checked: MI
 Drawn By: KM
 Project Management Initials:
 Last saved by: NEIL BYRNE (2022-08-16) Last Plotted: 2022-08-16
 Filename: \\NA.AECOM\NET.COM\PLANS\EMEA\IDUBLIN\EDBL2\LEGACY\IEDBL2\FP001\DATA\DCS\PROJECTS\CI\60659192_ACM\01-00-DR-CE-10-0501.DWG

LEGEND:

- EXISTING SURFACE WATER SEWER.....
- PROPOSED SURFACE WATER SEWER.....
- PROPOSED CLASS 1 BYPASS SEPARATOR.....
- PROPOSED SURFACE WATER ATTENUATION TANK.....
- EXISTING FOUL WATER SEWER.....
- PROPOSED PVC FOUL WATER SEWER.....
- RED LINE BOUNDARY.....
- PROPOSED FILTER DRAIN WITH CATCHPIT.....



B CONTINUATION OF DRAINAGE LAYOUT
 0501 Scale: 1:500

FOUL WATER NETWORK DETAILS

Pipe Number	US/MH Name	Pipe Length (m)	Fall (m)	Slope (1:X)	US/IL (m)	DS/IL (m)	US/CL (m)	Pipe DIA (mm)	US Cover Depth (m)
F1.000	F1	61.380	0.409	150	129.434	129.025	130.334	150	0.750
F1.001	F2	6.903	0.046	150	129.025	128.979	133.785	150	4.610
F2.000	F3	27.157	1.086	25	135.507	134.421	136.857	150	1.200
F2.001	F4	35.856	1.793	20	134.421	132.628	135.783	150	1.212
F2.002	F5	10.410	0.069	151	132.628	132.559	134.397	150	1.619
F1.002	F6	59.198	0.296	200	128.904	128.608	133.644	225	4.515
F1.003	F7	6.725	0.042	161	128.608	128.566	132.342	225	3.509
F3.000	F8	33.615	0.560	60	131.705	131.145	133.055	150	1.200
F3.001	F9	28.860	0.491	59	131.145	130.654	132.567	150	1.272
F3.002	F10	5.812	0.291	20	130.654	130.363	132.034	150	1.230
F1.004	F11	53.812	0.359	150	128.566	128.207	131.724	225	2.933
F1.005	F12	16.568	0.753	22	125.958	125.205	129.675	225	3.492
F1.006	F13	41.515	1.887	22	125.205	123.318	126.180	225	0.750
F1.007	F14	73.033	0.730	100	123.318	122.588	125.200	225	1.657
F1.008	F15	40.491	1.841	22	122.588	120.747	123.610	225	0.797
F1.009	F16	11.311	0.514	22	120.747	120.233	122.310	225	1.338
F1.010	F17	42.634	0.284	150	120.233	119.949	121.835	225	1.377
F1.011	F18	20.420	0.227	90	119.949	119.722	121.598	225	1.424

SURFACE WATER NETWORK DETAILS

Pipe Number	US/MH Name	Pipe Length (m)	Fall (m)	Slope (1:X)	US/IL (m)	DS/IL (m)	US/CL (m)	Pipe DIA (mm)	US Cover Depth (m)
S1.001	Pond	11.354	0.568	20	130.125	129.557	132.500	225	2.150
S1.002	S2	9.208	0.460	20	129.557	129.097	130.532	225	0.750
S1.003	S3	61.541	0.308	200	129.097	128.789	130.417	225	1.095
S2.000	S4	5.750	0.058	100	133.025	132.968	134.250	225	1.000
S2.001	S5	3.280	0.164	20	132.968	132.804	133.943	225	0.751
S1.004	S6	6.723	0.022	300	128.639	128.617	133.818	375	4.804
S3.000	S7	29.420	0.785	38	135.025	134.240	136.973	375	1.573
S4.000	S8	39.768	0.398	100	135.673	135.275	137.868	225	1.970
S4.001	S9	10.902	0.545	20	135.275	134.730	136.250	225	0.750
S3.001	S10	36.009	0.960	38	133.794	132.834	135.815	375	1.646
S5.000	S11	41.203	0.412	100	133.970	133.558	135.935	225	1.740
S5.001	S12	2.092	0.105	20	133.558	133.453	134.534	225	0.751
S3.002	S13	9.572	0.255	38	132.715	132.460	134.409	375	1.319
S1.005	S14	57.424	0.144	400	128.467	128.323	134.035	525	5.043
S1.006	S15	6.538	0.016	400	128.248	128.232	132.194	600	3.346
S6.000	S16	50.075	0.250	200	128.278	128.028	129.703	225	1.200
S6.001	S17	12.911	0.065	200	128.028	127.963	131.692	225	3.439
S1.007	S18	25.483	0.064	400	127.588	127.524	132.156	600	3.968
S1.008	S19	37.882	0.095	400	127.524	127.430	132.582	600	4.458
S1.009	S20	8.306	0.021	400	127.430	127.409	133.122	600	5.092
S1.010	S21	2.108	0.005	400	127.409	127.404	134.943	600	6.934
ATT. TANK		10.295	0.051	200	127.404	127.352	134.290	225	6.661
S1.012	S23	26.956	0.225	120	127.352	127.128	133.150	225	5.573
S1.013	S24	43.556	0.218	200	127.128	126.910	132.843	225	5.490
S1.014	S25	13.043	0.065	200	126.910	126.845	132.148	225	5.013
S1.015	S26	51.444	1.513	34	126.845	125.331	131.620	225	4.550
S1.016	S27	12.390	0.620	20	125.331	124.712	129.599	225	4.043
S1.017	S28	37.684	1.256	30	124.712	123.456	126.140	225	1.203
S1.018	S29	72.222	1.111	65	123.456	122.345	125.240	225	1.559
S1.019	S30	22.321	0.149	150	122.345	122.196	123.730	225	1.160

A PROPOSED DRAINAGE LAYOUT
 0501 Scale: 1:500



PROJECT
 PROPOSED RESIDENTIAL DEVELOPMENT AT LANDS AT STONEY HILL ROAD, RATHCOOLE, Co. DUBLIN

CLIENT
 ROMEVILLE DEVELOPMENTS LTD.

CONSULTANT
 AECOM
 4th Floor Adelphi Plaza,
 George's Street Upper,
 Dun Laoghaire,
 Co Dublin
 Tel: +353 (0)1 696 6220
 www.aecom.com

- NOTES**
- THIS DRAWING IS TO BE READ IN CONJUNCTION WITH ALL OTHER RELEVANT ARCHITECTURAL AND ENGINEERING DRAWINGS. ANY DISCREPANCIES, ERRORS OR OMISSIONS TO BE BROUGHT TO THE ATTENTION OF THE DESIGNER.
 - DRAWING TO BE READ IN CONJUNCTION WITH LANDSCAPE ARCHITECT DRAWINGS.
 - ALL DIMENSIONS TO BE CHECKED BY THE CONTRACTOR ON SITE PRIOR TO COMMENCEMENT OF WORKS.
 - AECOM LIMITED TO BE INFORMED BY THE CONTRACTOR OF ANY DISCREPANCIES PRIOR TO THE COMMENCEMENT OF WORKS ON SITE.
 - DIMENSIONS OF ALL BOUNDARIES AND ADJOINING ROADS TO BE CHECKED ON SITE PRIOR TO COMMENCEMENT OF WORKS.
 - DO NOT SCALE. ALL MEASUREMENTS AND COORDINATES TO BE CHECKED ON SITE.
 - EXISTING SERVICES SHOWN ON DRAWINGS ARE BASED ON PUBLIC RECORDS AVAILABLE AT THE DATE OF THIS PLANNING APPLICATION. RECORDS COULD BE INACCURATE, THEREFORE SHOULD BE VERIFIED VIA GPR AND MANHOLE SURVEY.
 - THE TOPOGRAPHICAL SURVEY WAS PROVIDED BY STANLEY RESIDENTIAL, DATED 29TH APRIL.
 - THE LOCATION & DEPTH OF SERVICES TO BE CHECKED ON SITE PRIOR TO COMMENCING ANY WORKS.
 - MANHOLE COVERS AND FRAMES IN PUBLICLY ACCESSIBLE AREAS SHALL BE HEAVY DUTY CAST IRON, CLASS D400, DOUBLE SEALED AND LOCKABLE TYPE COMPLYING WITH BS EN 124:2015.
 - GULLY GRATINGS & FRAMES SHALL COMPLY WITH BS EN 124:2015.
 - EXISTING INVERT LEVELS TO BE VERIFIED ON SITE BEFORE COMMENCING CONSTRUCTION.
 - SURFACE WATER & FOUL SEWER PIPES LESS THAN 1.2m BELOW THE ROAD SURFACE OR LESS THAN 0.9m IN NON-TRAFFICKED FOOTPATHS AND LANDSCAPE AREAS (WITH AN ABSOLUTE MINIMUM DEPTH OF COVER ABOVE THE EXTERNAL CROWN OF THE PIPE Ø750mm) SHALL BE PROTECTED FROM DAMAGE BY PROVIDING MINIMUM 150mm THICK CONCRETE C16/20 HAUNCH IN ACCORDANCE WITH IS EN 12620.
 - ATTENUATION PROPOSALS SHALL BE IN ACCORDANCE WITH THE REQUIREMENTS OF THE LOCAL AUTHORITY.
 - RAINFALL BUTTS TO BE INSTALLED AT THE BACK OF EACH PROPOSED DWELLING.
 - CCTV SURVEY TO BE CONDUCTED PRIOR TO COMMENCEMENT OF ANY WORKS TO DETERMINE THE CONDITION AND VERIFY LEVELS OF THE EXISTING FOUL AND SURFACE WATER PIPES/ MANHOLES. ANY SUB-STANDARD OR DEFECTIVE ELEMENTS OF THE EXISTING PIPES/MANHOLES TO BE REPORTED AND CORRECTED.
 - ALL SURFACE WATER DRAINAGE DETAILS TO BE IN ACCORDANCE WITH THE GREATER DUBLIN REGIONAL DRAINAGE STUDY AND THE GREATER DUBLIN REGIONAL CODE OF PRACTICE FOR DRAINAGE WORKS.
 - ALL FOUL WATER DETAILS TO BE IN ACCORDANCE WITH THE IRISH WATER INFRASTRUCTURE STANDARD DETAILS AND CODE OF PRACTICE FOR WASTEWATER INFRASTRUCTURE.
 - PROPOSED PIPEWORKS WITH COVER TO GROUND BETWEEN 750mm AND 1.2m TO BE CONCRETE SURROUNDED.
 - FOR PROPOSED SUDS SYSTEMS LAYOUT PLEASE REFER TO DRAWING 60659192-ACM-01-00-DR-CE-10-0520.



ISSUE/REVISION

NO	DATE	DESCRIPTION
0	26.08.2022	PLANNING ISSUE

PROJECT NUMBER
 60659192

SHEET TITLE
 PROPOSED DRAINAGE LAYOUT

SHEET NUMBER
 60659192-ACM-01-00-DR-CE-10-0501