

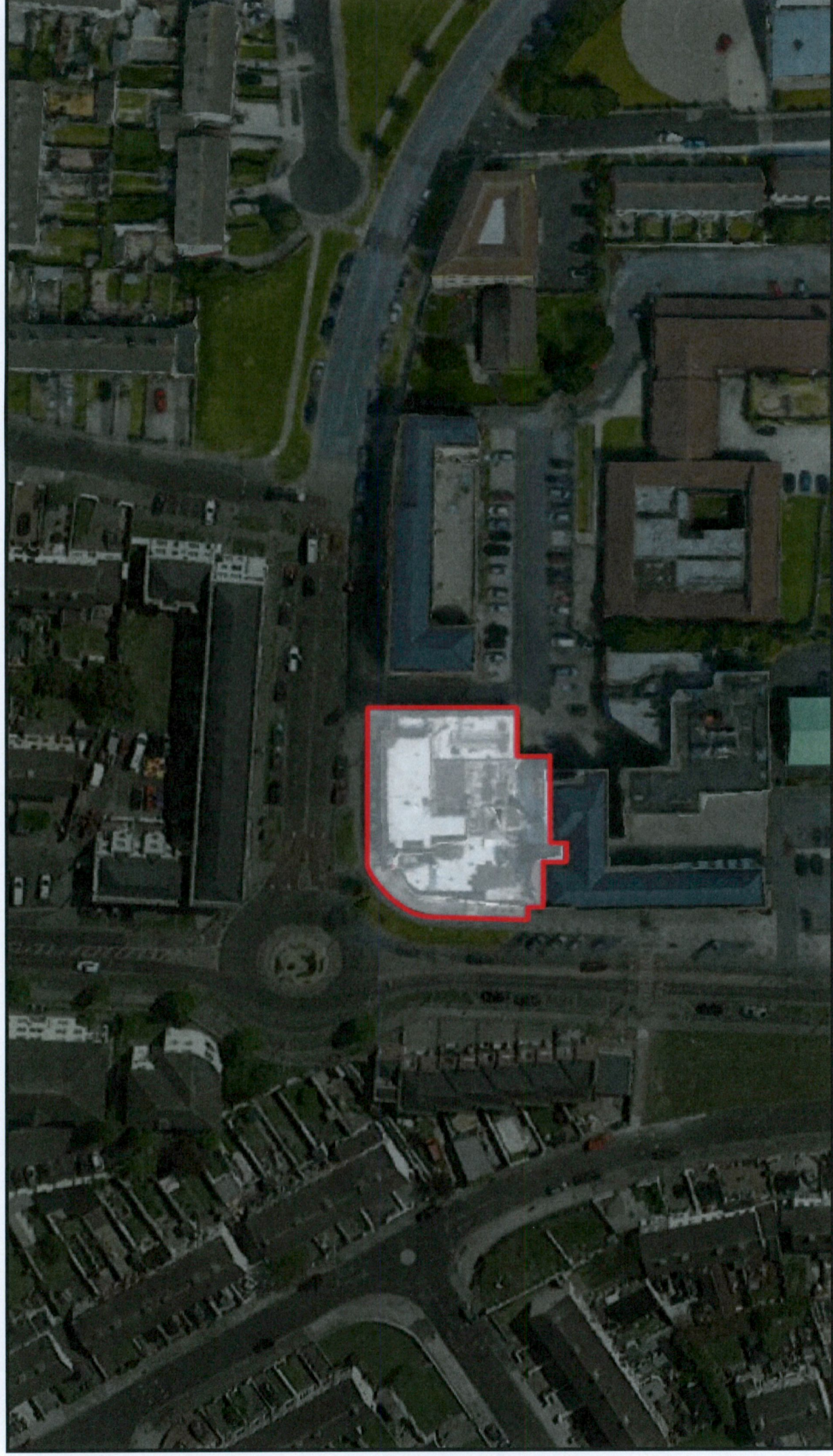
Landscape Rationale

Proposed Development at Finches Pub
Clondalkin, Co Dublin



RMIDA
LANDSCAPE ARCHITECTS + CONSULTANTS

Site Location



Finches Pub is located in Neilstown road, Clondalkin, Dublin.
The image to the left is showing the proposed site in aerial view.
Red lines show exact site location.

Site Location



The image to the left is showing the proposed site in Street view.
Red lines show exact site location.

Landscape Plan

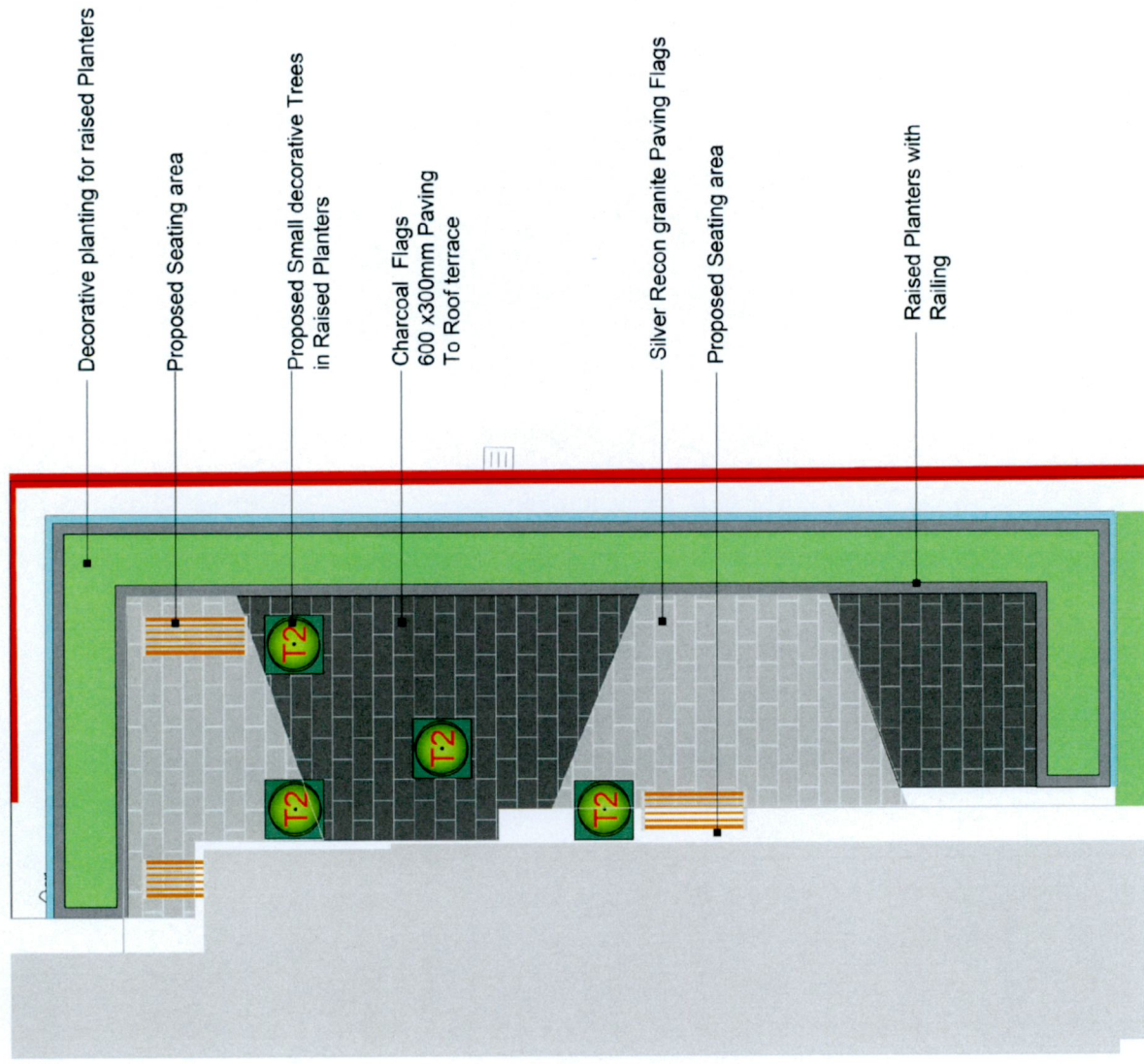


The proposed Finches Pub development is a mix development with Commercial and Residential units. Proposed Design will include a landscaped courtyard and roof terraces on the Third floor

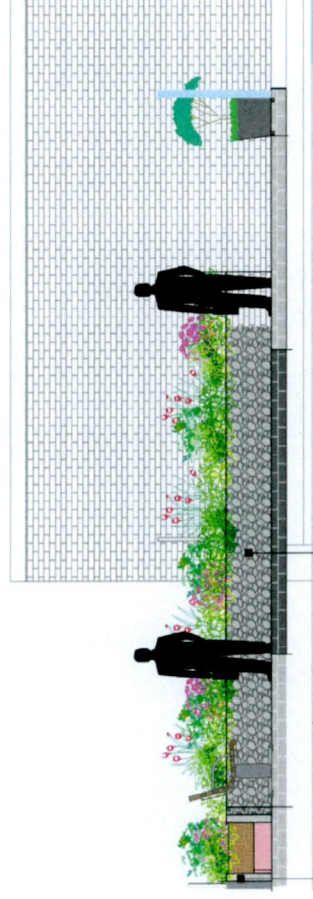
Open Spaces 3rd Floor Terraces

Landscape Masterplan - Third Floor - Roof gardens

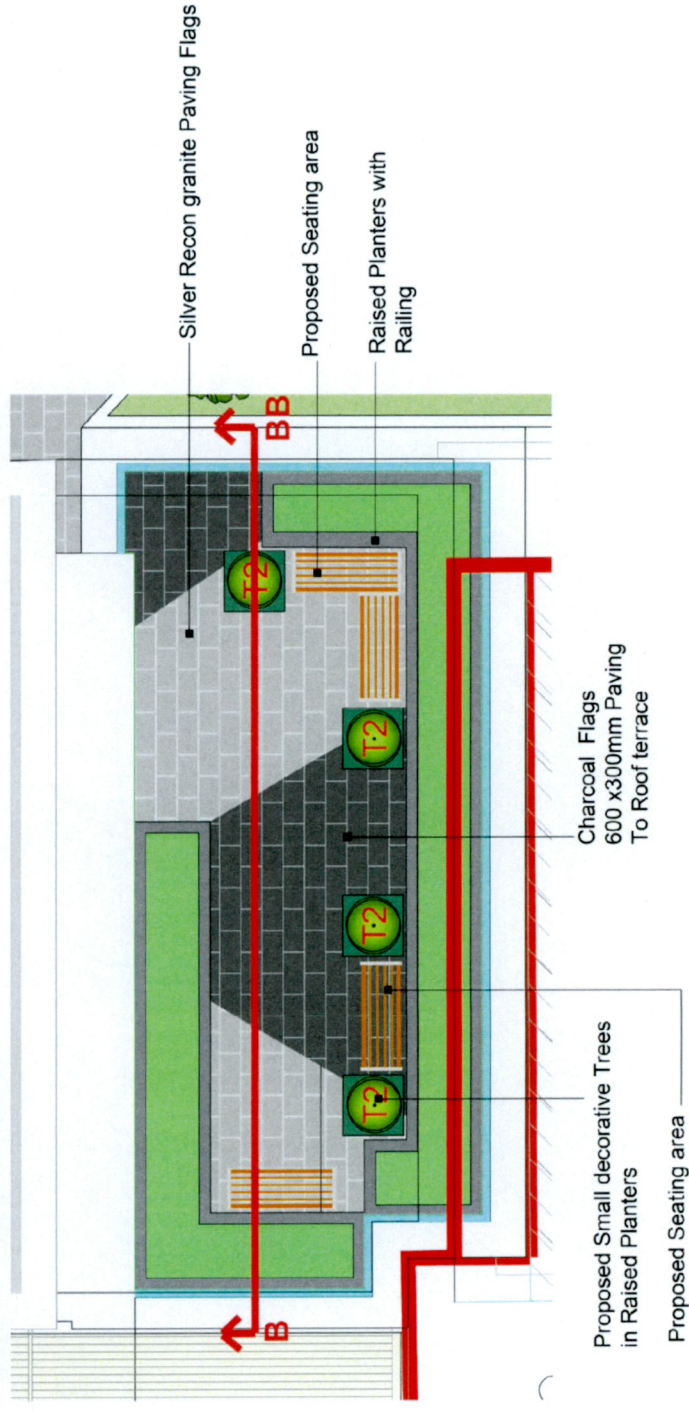
Detail 1 - Roof Terrace 1



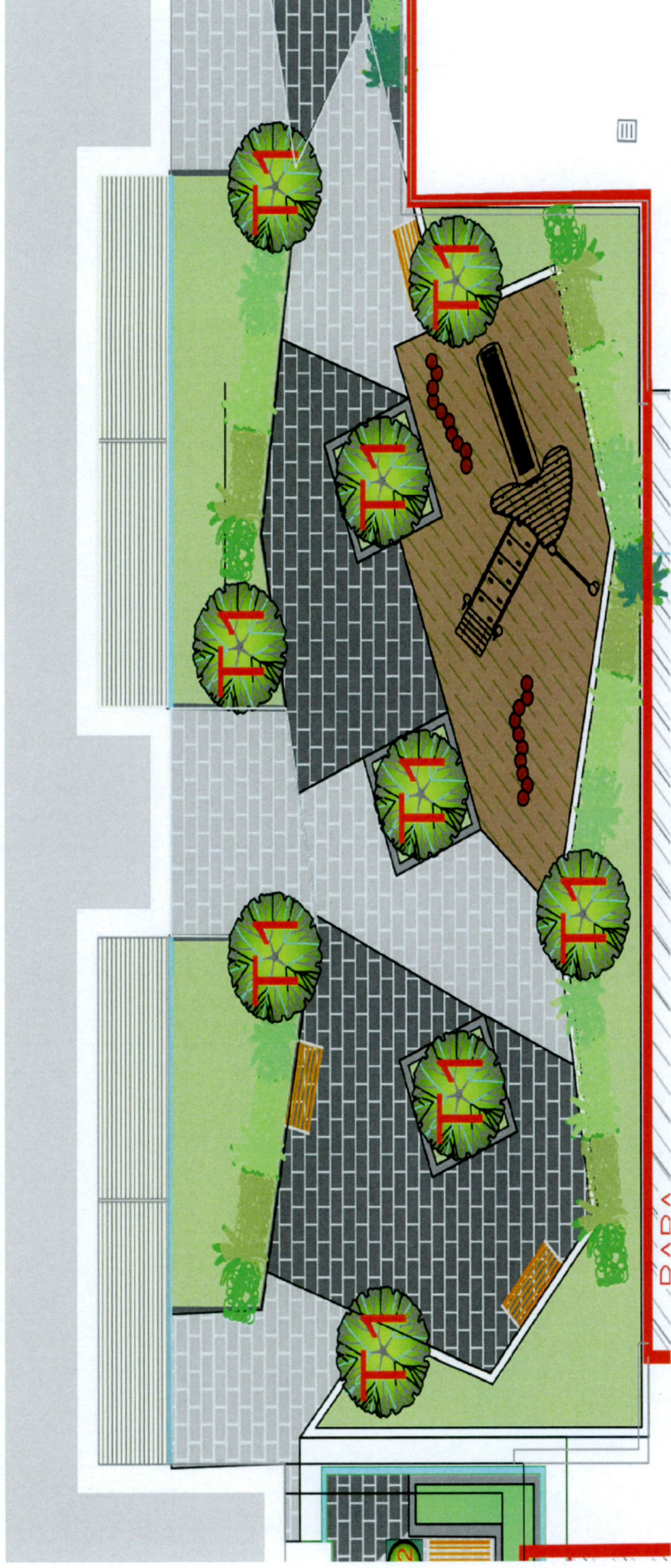
Section B - BB



Detail 2 - Roof Terrace 2

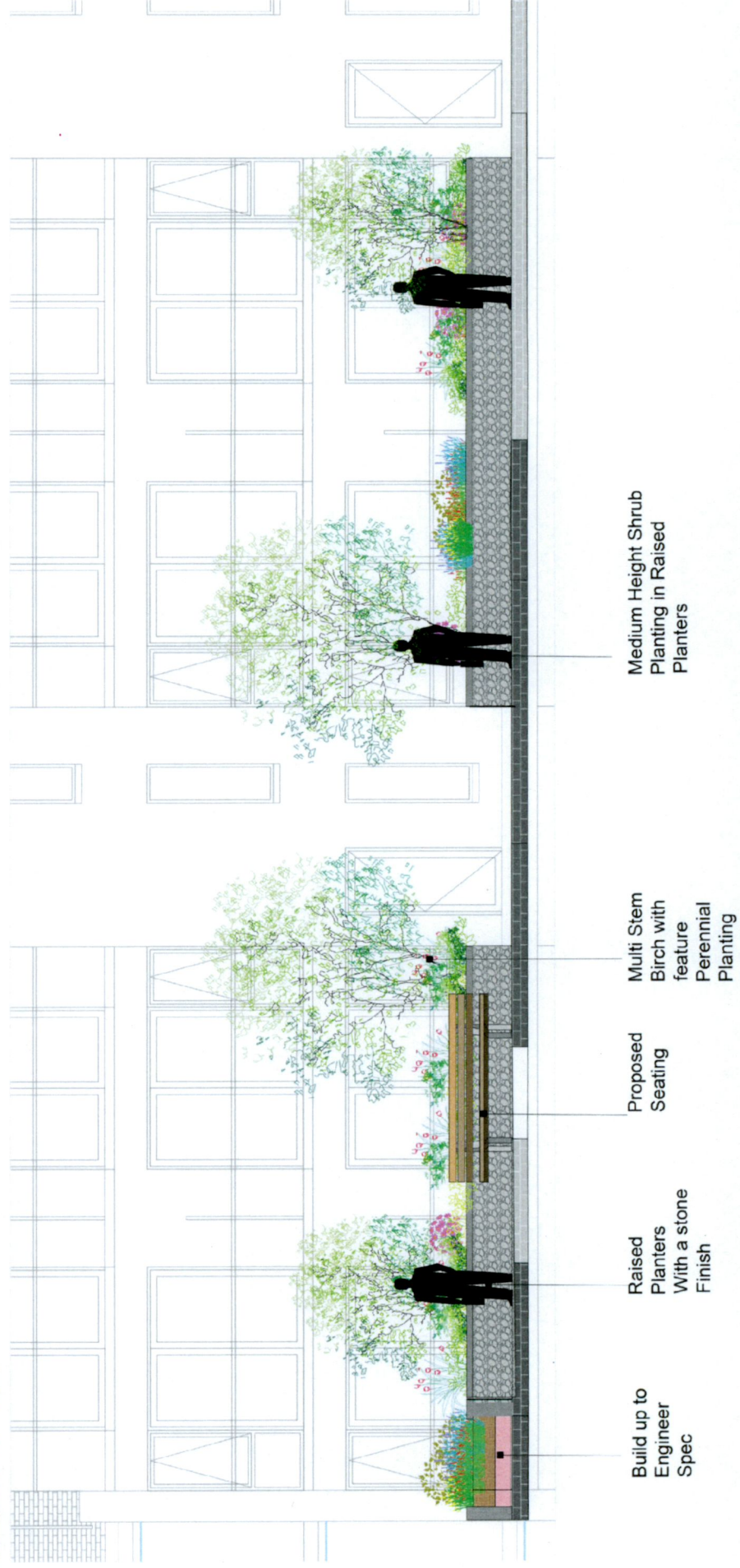


Open Spaces Courtyard

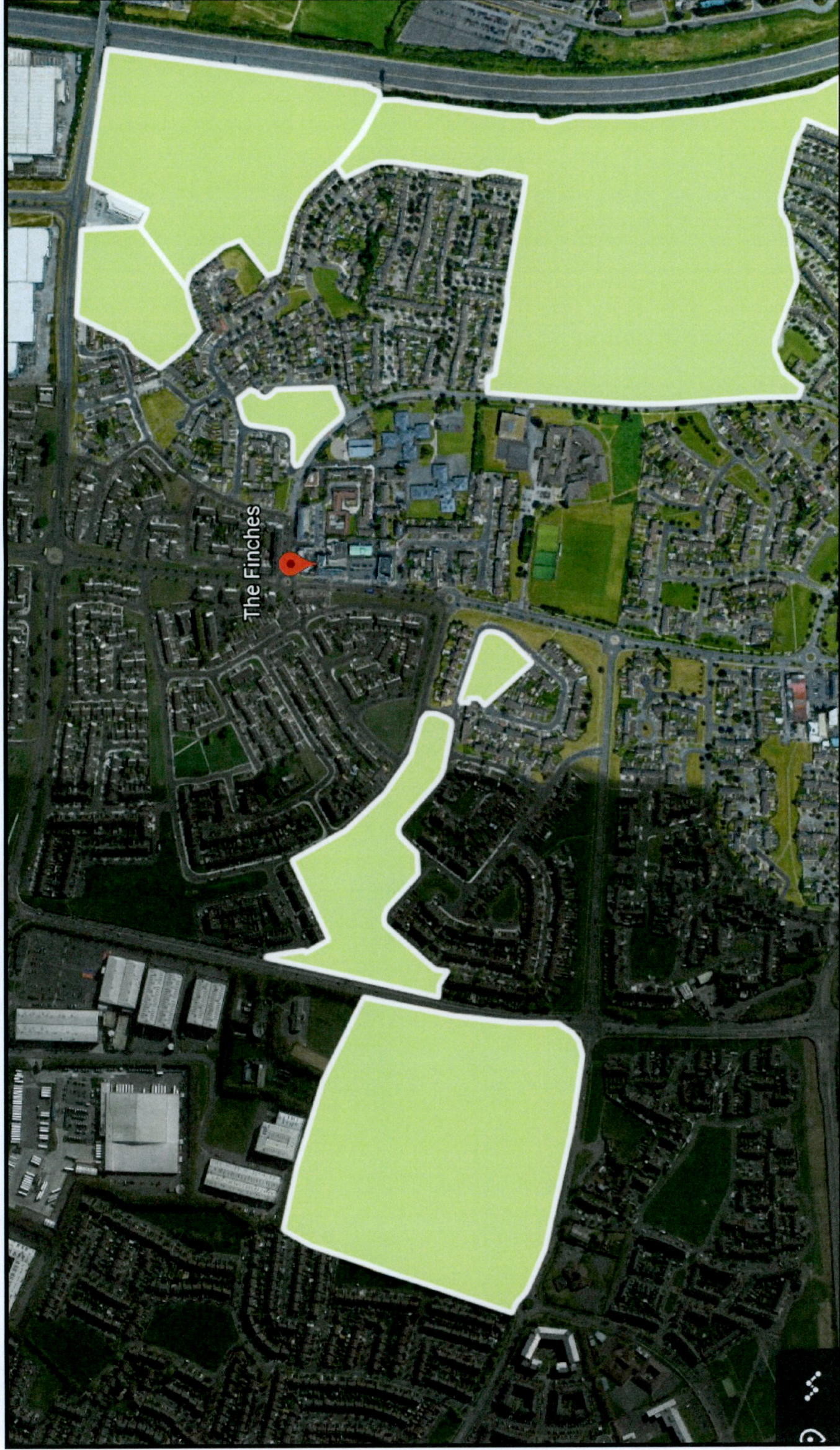


Proposed Courtyard will be on the first floor.
 We propose high quality landscaping to
 enhance the proposed development and create
 a nice amenity space.

Section A - AA

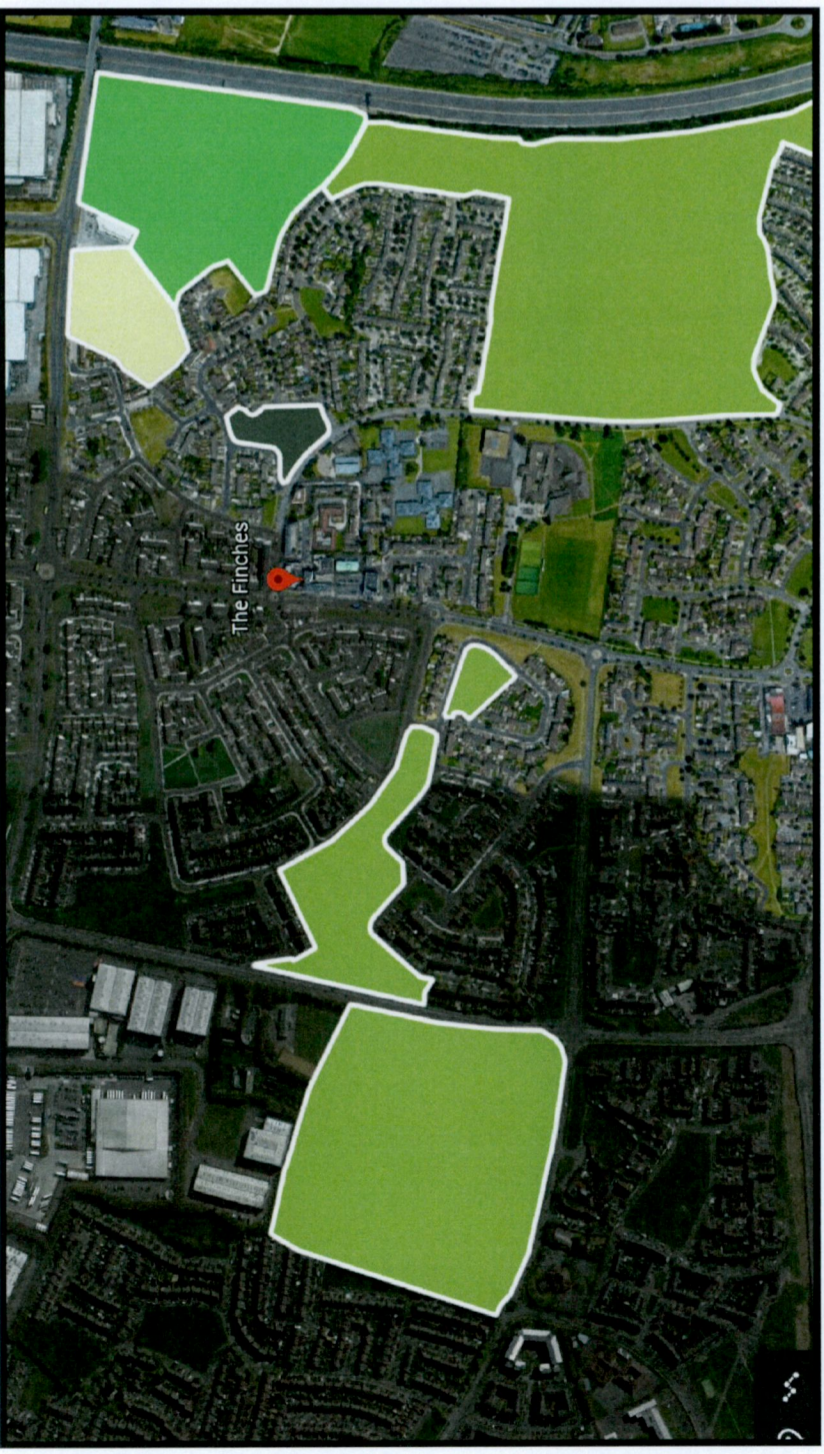


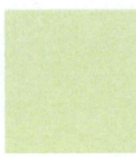

Context Open Spaces



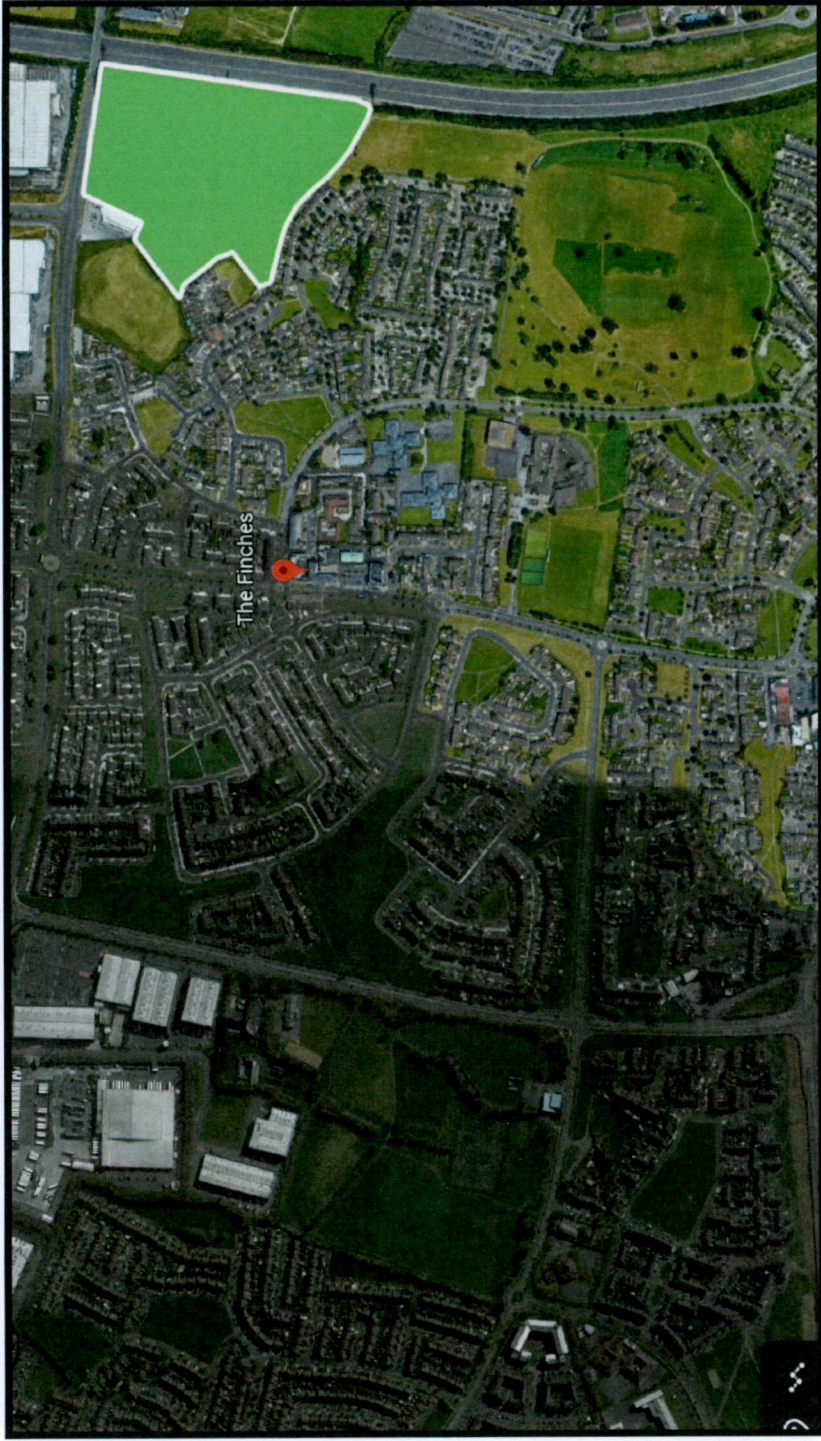
This image above shows all the surrounding open and Amenity spaces located near Proposed Development
There are Three Different Types of
Open space identifies close in proximity to Finches development.

Open Space Uses

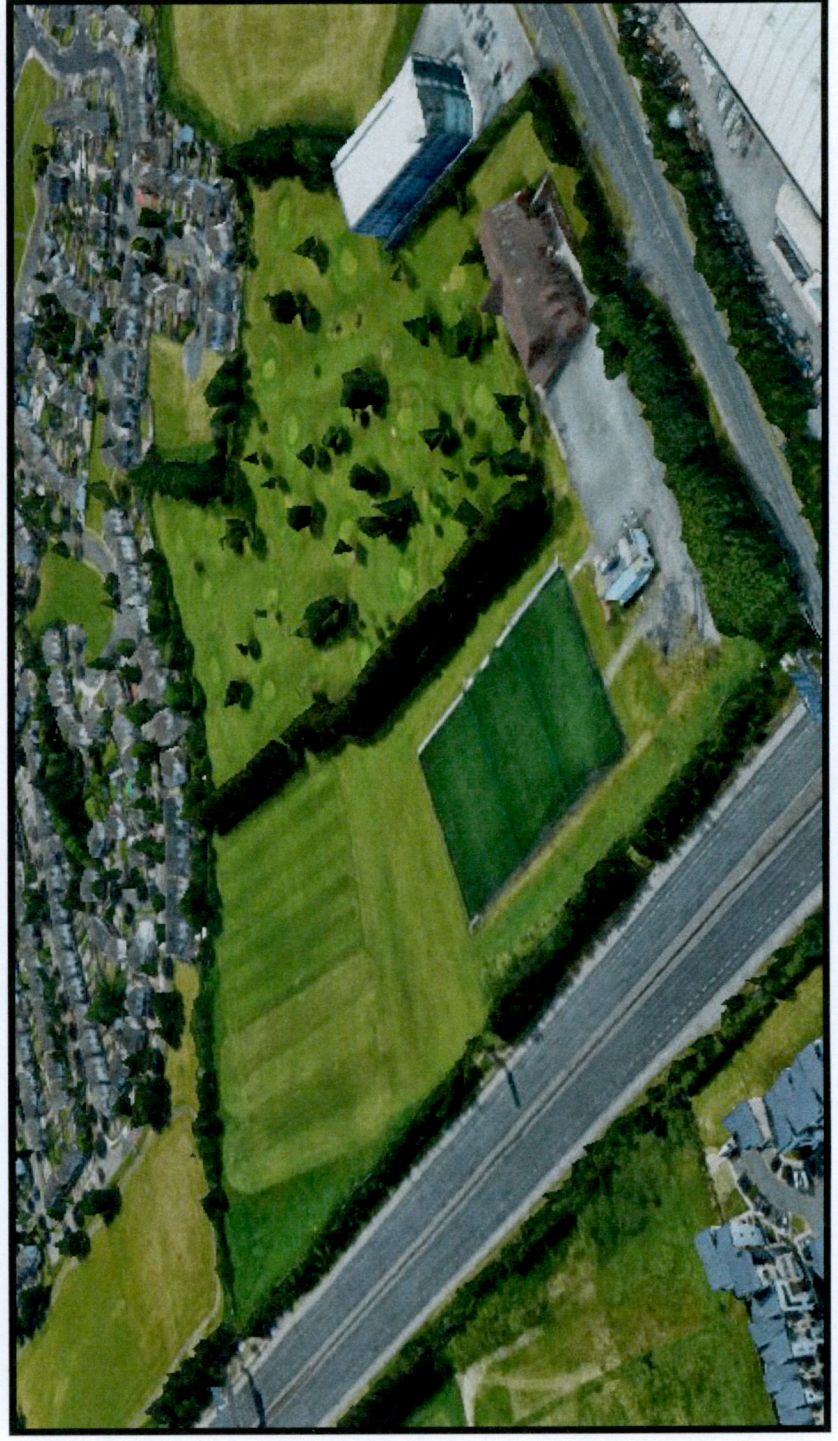


-  Type 1
Amenity Space - E.g Private Sport Complex
-  Type 2
Public Sports field
-  Type 3
Open Green Space
-  Type 4
Parks

Open Space Type 1

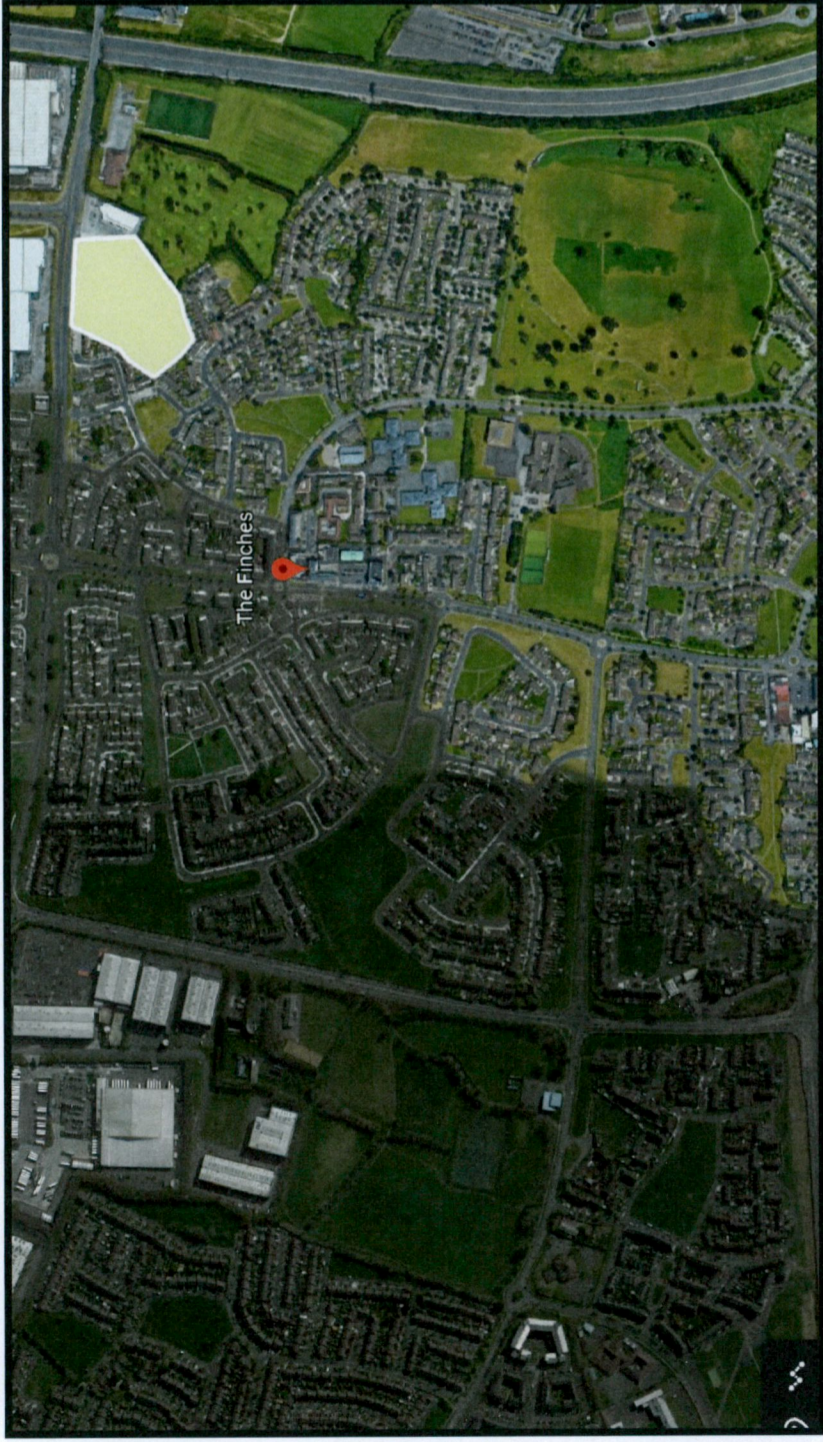


Active Amenity Space -
E.g Private Sport Complex

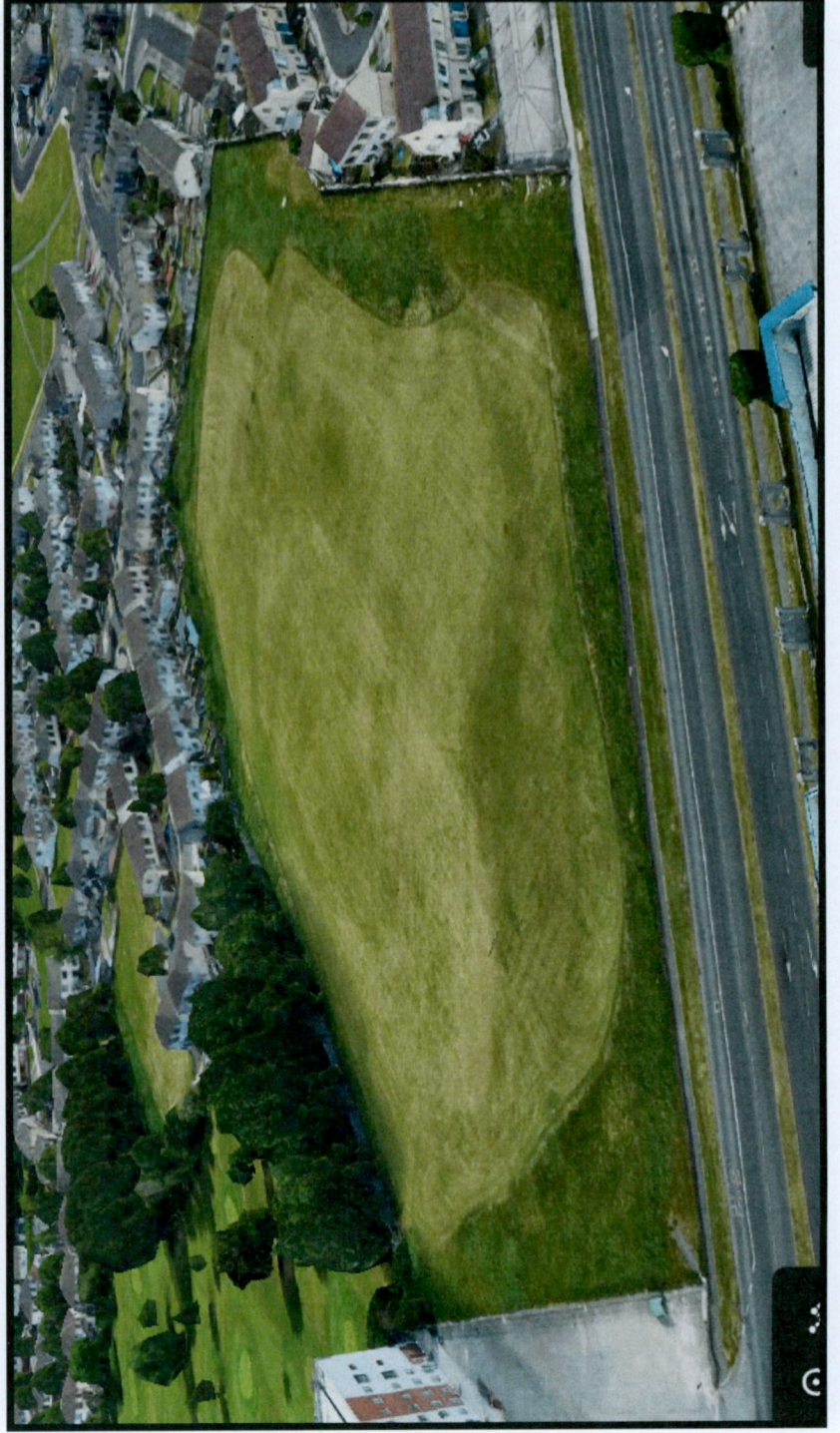


1. Sports field
2. Astro
3. Par Golf Course

Open Space Type 2

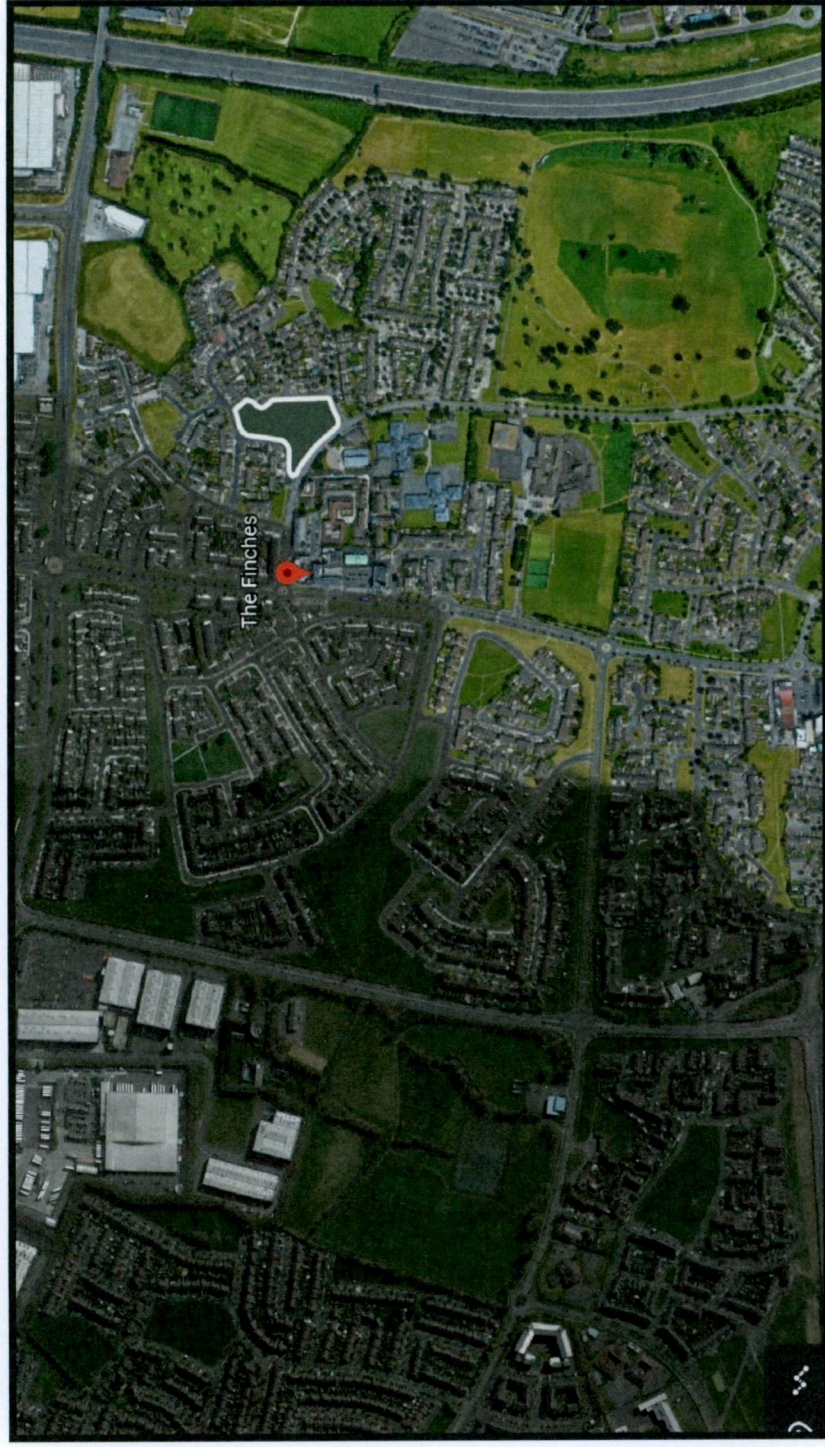


Public Sports field

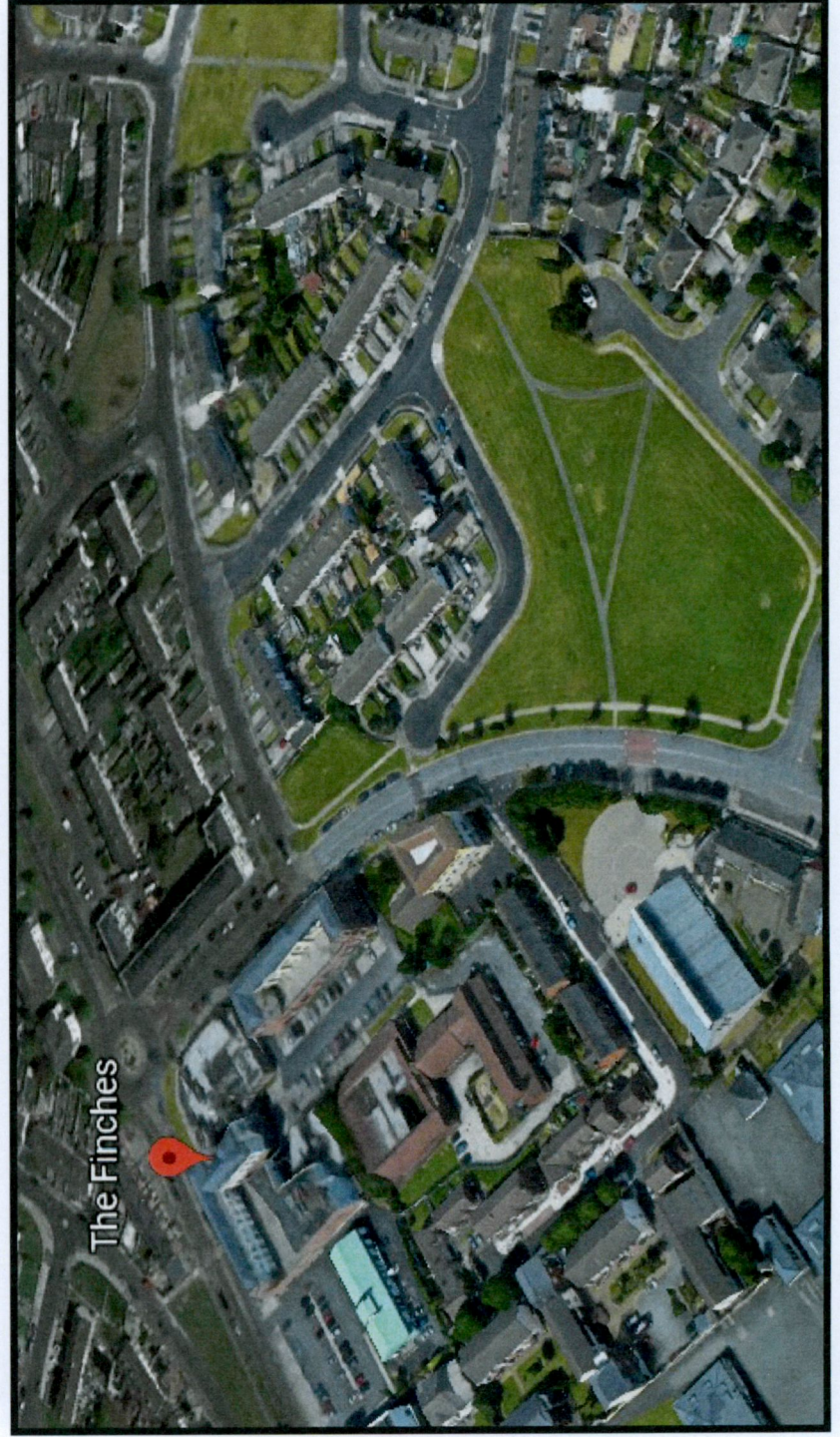


Public GAA Pitch
(Goal Posts Not coming up in Google Earth)

Open Space Type 3

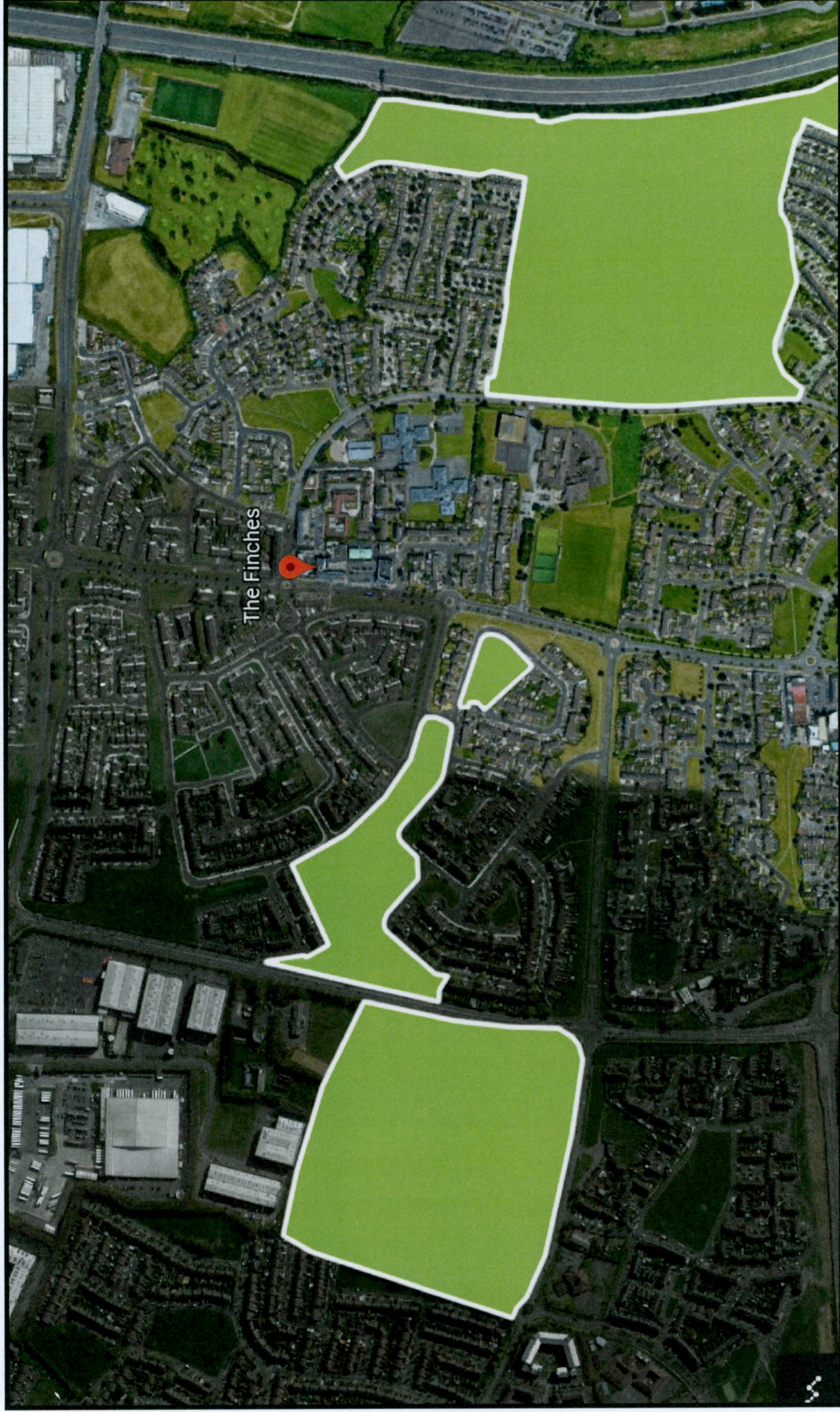


Open Green Space



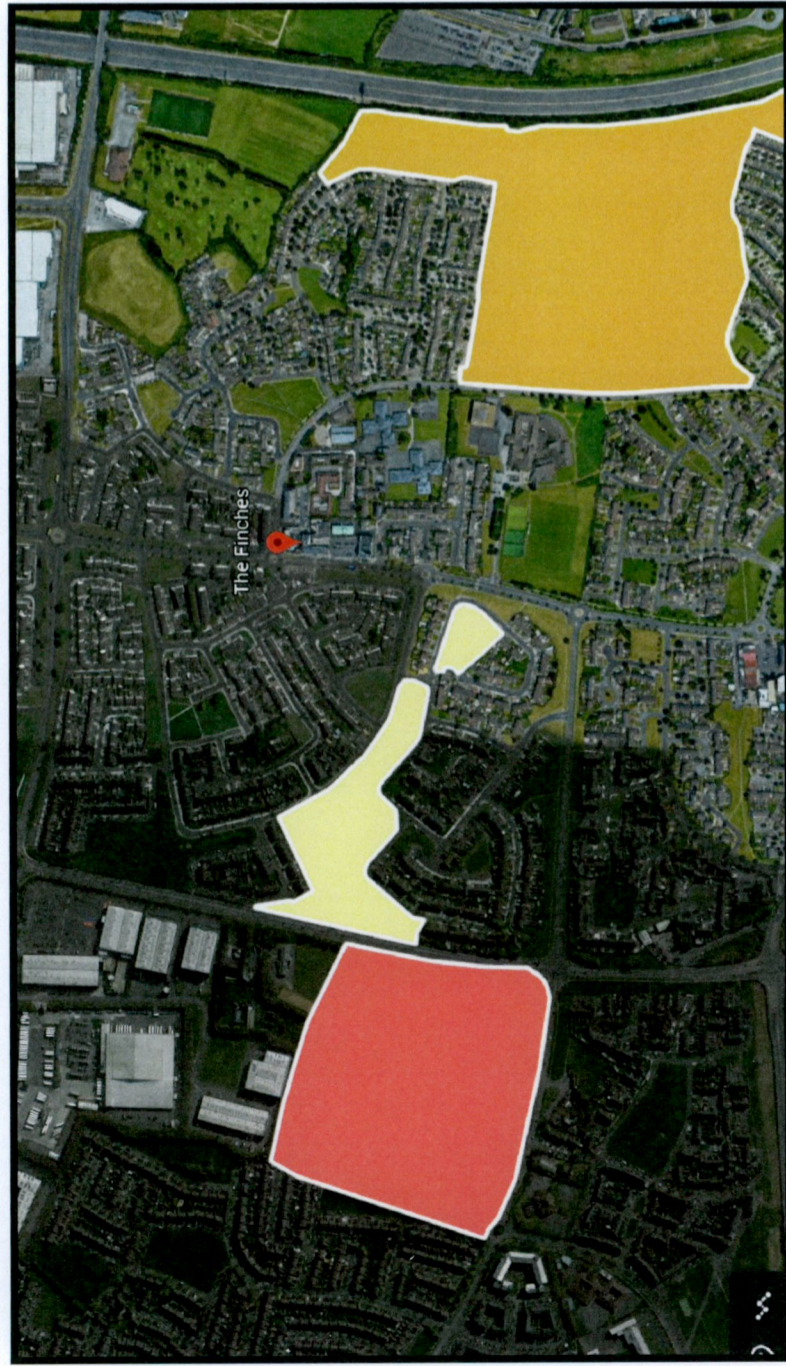
This is the nearest Open Space to said proposed development

Open Space Type 4



 Parks

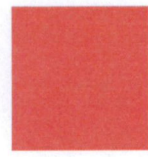
Open Space Type 4



Collinstown Park



Rowlagh Park



Ballyowen Park



13 minute walk



4 minute walk

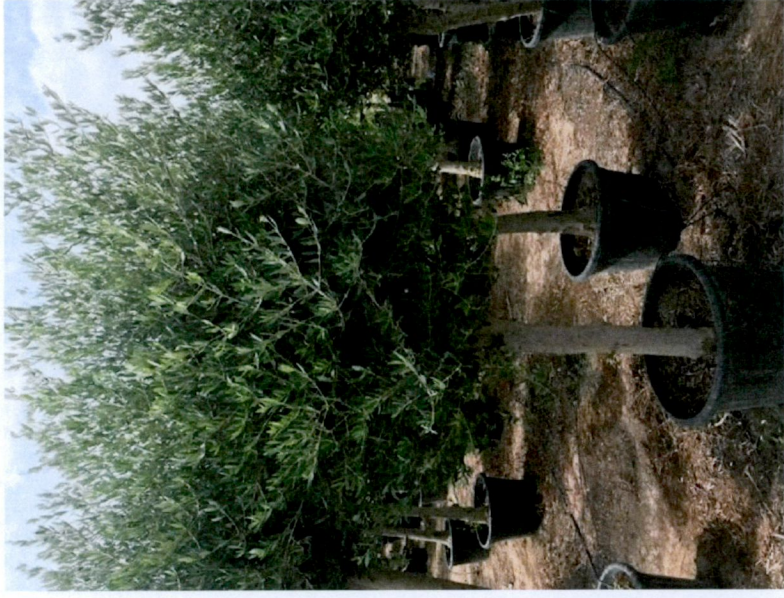


7 minute Walk

Proposed Tree Planting



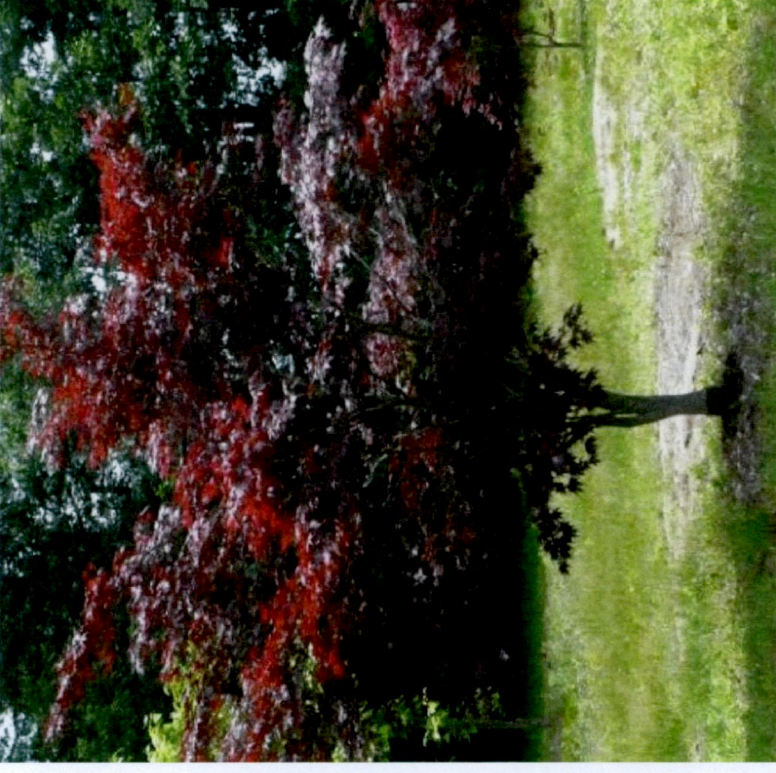
Betula pendula multi-stem



Olea europaea



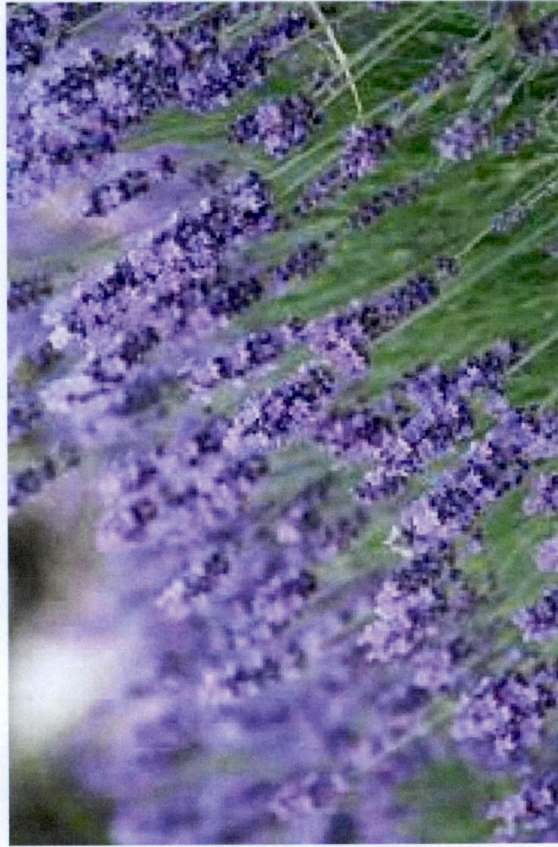
Tilia cordata



Acer palmatum 'Bloodgood'

Images above show mature trees- not actual proposed size

Proposed Shrub Planting



Lavandula angustifolia



Verbena grandiflora



Cistus corbariensis



Hebe spp



Ribes spp



Cornus alba



Rosmarinus



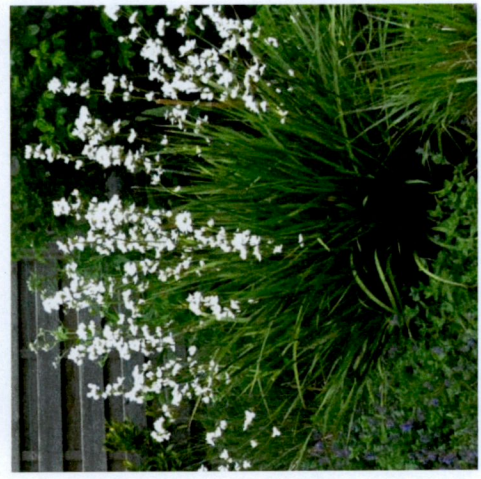
Hypericum hidcote



Cornus sanguinea



Dryopteris erythrosora

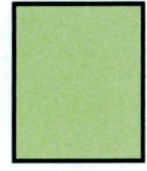


Libertia Formosa



Pennisetum Alopecuroides

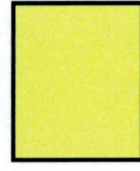
Proposed Screening To Courtyard



Courtyard Screening



Terrace Screening



Street level Screening

Proposed Courtyard Screening

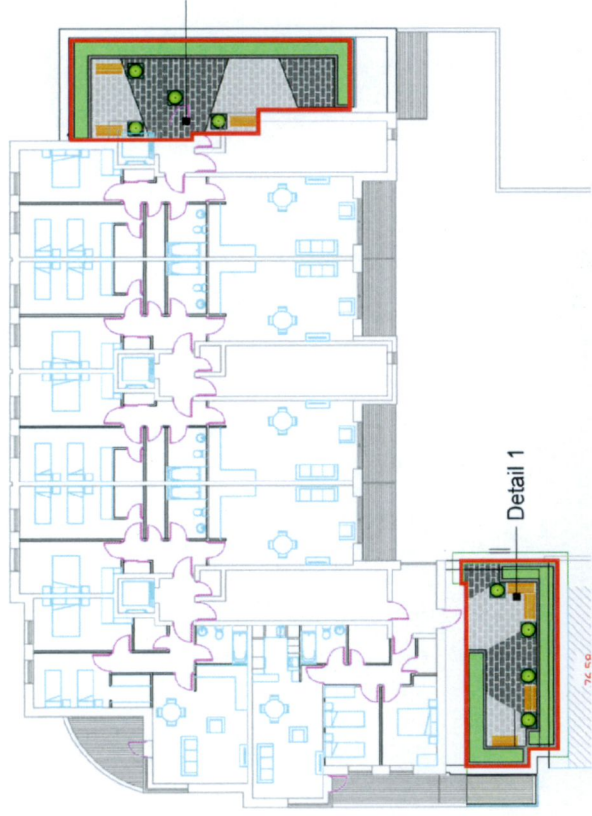
Our approach is to propose a hedge to run along the boundary of the courtyard. The hedge we are proposing is *Prunus lusitanica angustifolia*, which at full growth stands at 5m.

Proposed Hedge : *Prunus lusitanica angustifolia*



Proposed Screening To Terraces

Our approach is to propose raised planters running along the terraces edge. These planters should create a sense of separation from the street and the terraces. Visually the planters will also create a sense of privacy from the street level.



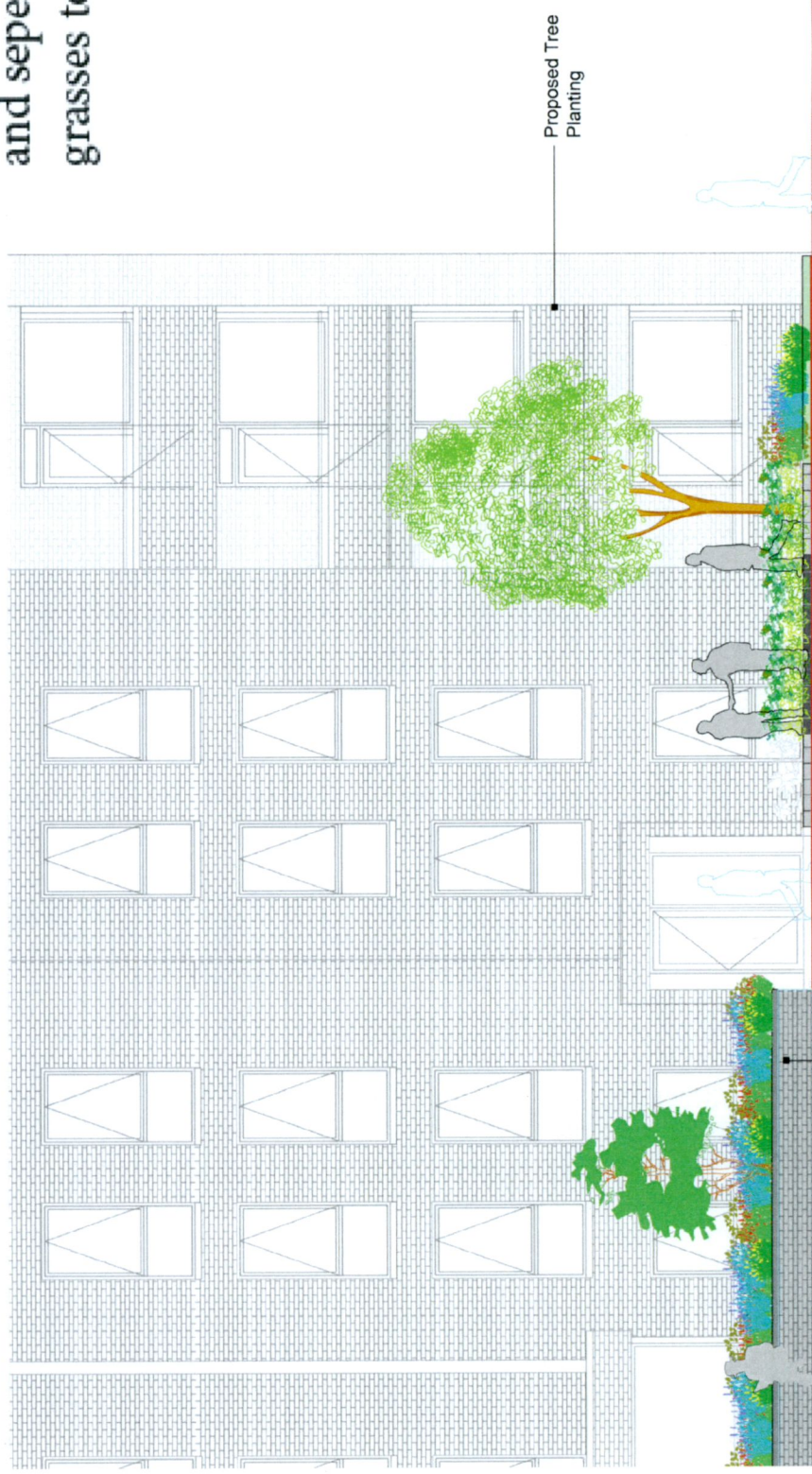
Proposed Street Level Screening

Northern Elevation



Our approach is to propose raised planters which double as elevated screening and separation from the building. Here we proposed a mixture of shrubs and grasses to create a soft border between the street and the building.

Main Entrance to Apartments Northern Elevation



Proposed Raised Planter with Pollinator friendly planting