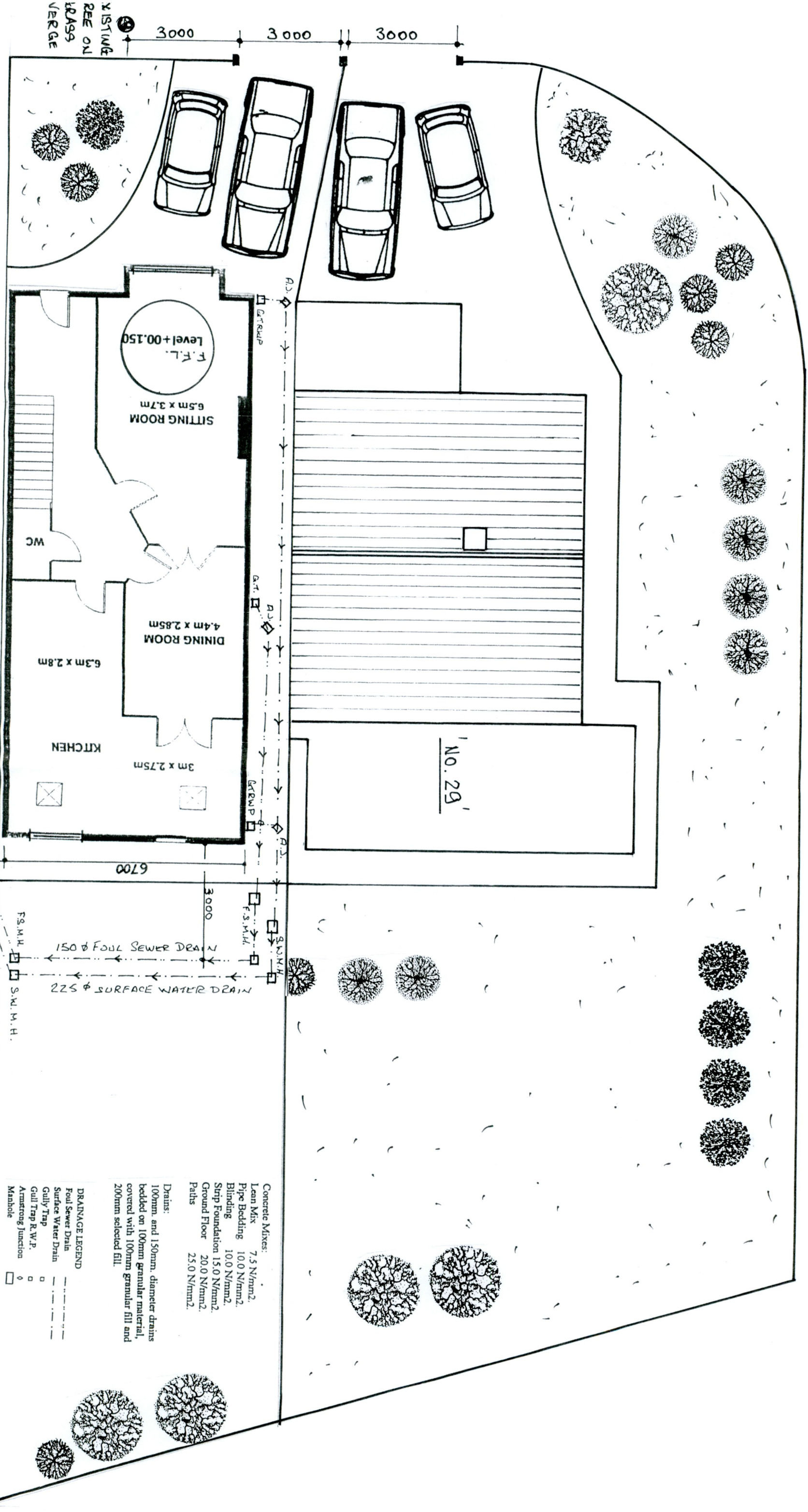


PROPOSED TWO STOREY FOUR BEDROOM DETACHED HOUSE TO SIDE OF 29 BALLYROAN HEIGHTS, RATHFARNHAM, DUBLIN 16 FOR J. McDONAGH.

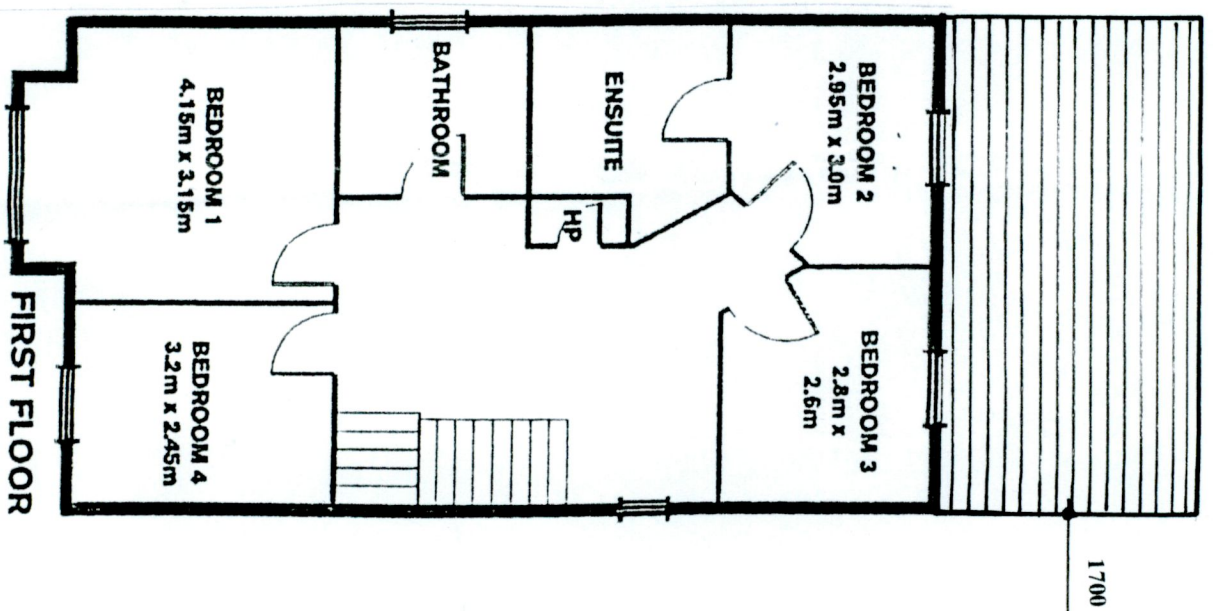
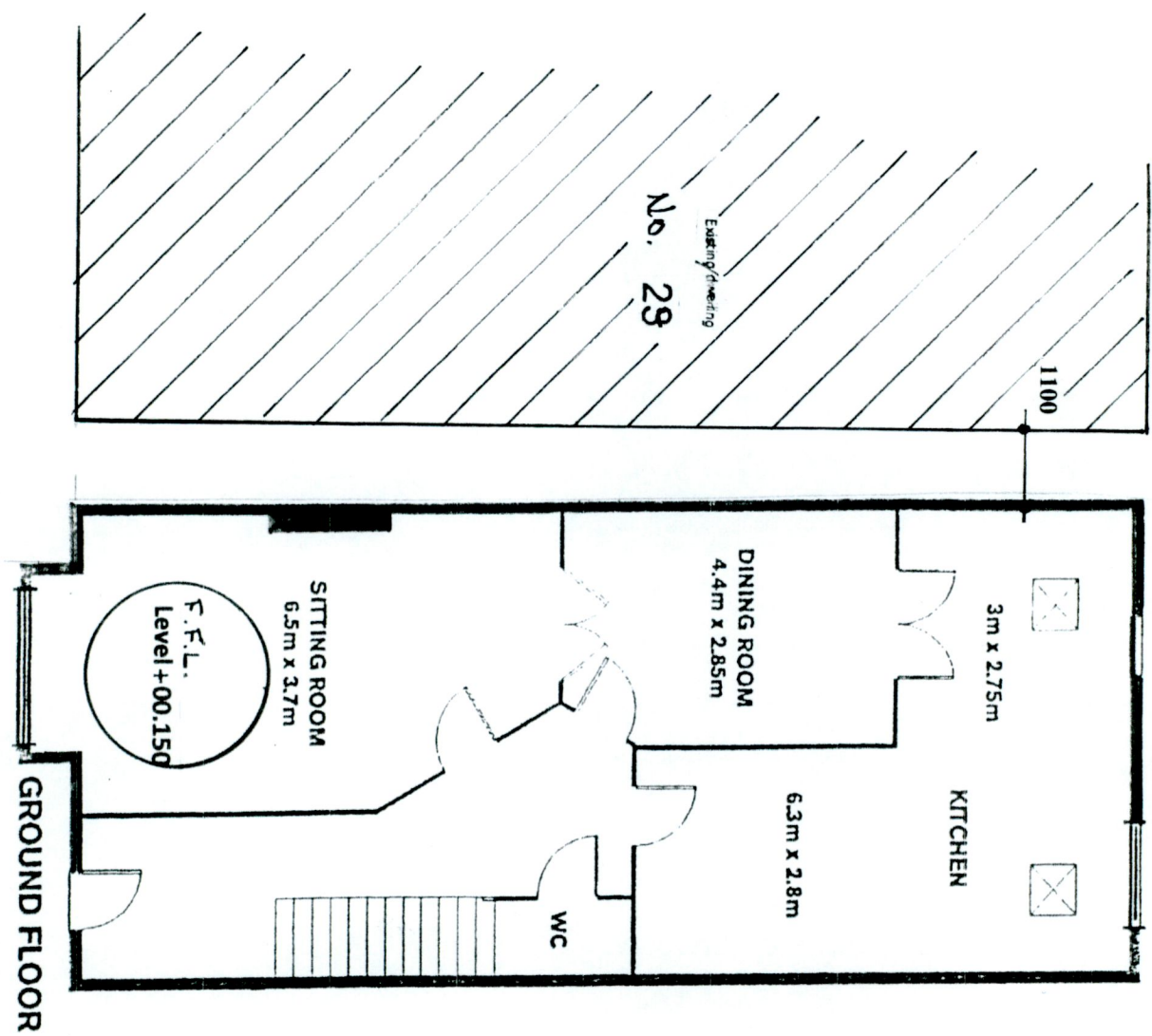
Drawing Number : 586/PD/03
 Scale : 1 : 100

WATSON FITZPATRICK & ASSOCIATES
 Planning & Design Consultants
 98 Woodlawn Park Grove
 Firhouse, Dublin 24.



- Concrete Mixes:
- Lean Mix 7.5 N/mm²
 - Pipe Bedding 10.0 N/mm²
 - Blinding 10.0 N/mm²
 - Strip Foundation 15.0 N/mm²
 - Ground Floor 20.0 N/mm²
 - Paths 25.0 N/mm²
- Drains:
- 100mm and 150mm diameter drains bedded on 100mm granular material, covered with 100mm granular fill and 200mm selected fill.
- Drainage Legend
- Foul Sewer Drain
 - Surface Water Drain
 - Gully Trap
 - Gull Trap R.W.P.
 - Armstrong Junction
 - Manhole

PROPOSED TWO STOREY FOUR BEDROOM DETACHED HOUSE TO SIDE OF 29 BALLYROAN HEIGHTS, RATHFARNHAM, DUBLIN 16 FOR J. McDONAGH.



PLANNING COUNTER
30 AUG 2022
RECEIVED

Drawing Number : 586/PD/08
Scale : 1 : 100

WATSON FITZPATRICK & ASSOCIATES
Planning & Design Consultants
98 Woodlawn Park Grove
Firhouse, Dublin 24.