

Land Use, Economic and Transport Planning Department,  
County Hall,  
Town Centre  
Tallaght,  
Dublin 24.

**Date:** 5th September 2022

**Reference:** Re. Compliance with Condition no. 3 of Final Grant Permission SD21A/0171

Dear Sir/Madam,

Please find a response below in relation to correspondence received from South Dublin County Council on the 26<sup>th</sup> July 2022 in relation to compliance with Condition no. 3 of Final Grant Permission SD21A/0171

This document has been prepared by Rowan Engineering Consultants Ltd. (Rowan) on behalf of Coffey Construction Ltd. It provides confirmation to each of the conditions outlined in the Grant of Permission issued by SDDC. For the reader's convenience, the SDDC text for each of the Conditions has been included ahead of each response in *italics* with Rowans Response in dark blue colour font.

## Response to Request for Further Information

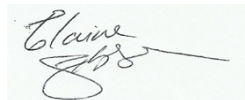
### Condition 3

*The applicant shall submit a revised report showing the proposed infill will not be on the flood zone as shown on the relevant CFRAM OPW map. A revised note will also be submitted showing any change to the infill area will not affect slope stability. Also a drawing will be submitted showing a protective route of fencing erected to demarcate a 10m buffer strip for boundary hedgerows and the flood zone where that area is outside the aforementioned 10m buffer strip.*

Attached Drawing J1387-PH-001 has been updated to remove infill from the CFRAM OPW map. The volume, slope or depth of infill has not changed therefore the changes are not believed to affect stability. Attached updated Drawing J1387-PH-001 also shows a protective route of fencing erected to demarcate a 10m buffer strip for boundary hedgerows and the flood zone. Silt fencing is also shown 10m from the flood zones and River Camac.

Should you have any queries please don't hesitate to contact, me.

Best Regards,



**Elaine Gibson**  
Environment Manager  
Mob: 0857620906  
Email: [Elaine.Gibson@rec.ie](mailto:Elaine.Gibson@rec.ie)

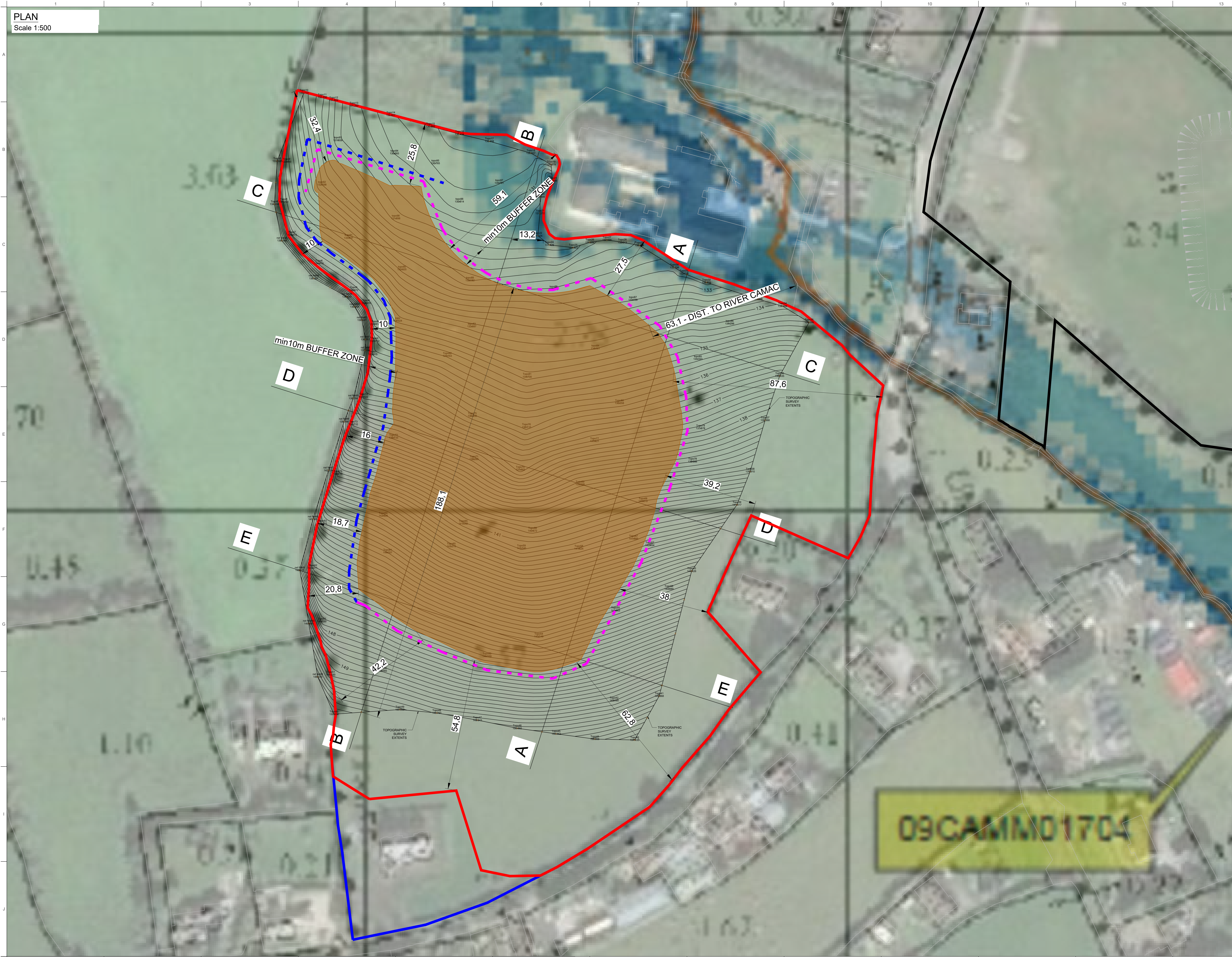
### Forensic & Environmental Engineering

**Head Office:** Unit 14 Scurlockstown Business Park, Trim, Co. Meath, C15 H008, Ireland.  
t: +353 46 903 0102 m: +353 86 832 7792 e: [info@rec.ie](mailto:info@rec.ie) w: [www.rec.ie](http://www.rec.ie)  
**Galway Office:** Unit 17, N17 Business Park, Tuam, Co Galway, H54 X578, Ireland.

## Drawings

- NOTES:
1. ALL DIMENSIONS ARE IN METRES (M) UNLESS NOTED OTHERWISE.
  2. ALL LEVELS ARE IN METRES AND RELATE TO THE ORDNANCE SURVEY DATUM MALIN HEAD (M) UNLESS NOTED OTHERWISE.
  3. ENSURE THIS DRAWING IS THE RELEVANT REVISION AND READ IN CONJUNCTION WITH ALL RELEVANT DOCUMENTS.
  4. TO BE VIEWED ON A4 PAPER SIZE.

- KEY / SYMBOLS:
- SITE BOUNDARY / FENCE
  - P. HURLEY FILED BOUNDARY
  - LAND OWNERSHIP BOUNDARY
  - FILL AREA
  - SILT FENCE
  - HEDGEROW PROTECTION FENCING



REV.	DESCRIPTION	DATE	BY	CHECK
06	AS PER COMMENTS.	09/08/22	PW	AC
05	FLOOD MAP ADDED.	17/05/22	PW	AC
04	SILT FENCE ADDED	28/01/22	PW	AC
03	VOLUMES REDUCED	17/10/21	PW	AC
02	FOR INFORMATION	06/07/21	PW	AC
01	FOR INFORMATION	13/04/21	PW	AC

APPROVED BY:	AC	SIGNED:	DATE:
CHECKED BY:	PS	SIGNED:	DATE:
DRAWN BY:	PW	SIGNED:	DATE:

CONFIDENTIALITY NOTE  
DESIGN, PROCESSES, PROCEDURES AND ASSOCIATED INFORMATION SET OUT HEREIN AND CONTAINED IN ANY SUBSEQUENT REVISIONS, APPROVALS, DRAWINGS AND SCHEDULES IS STRICTLY CONFIDENTIAL AND THE PROPERTY OF COFFEY GROUP. WRITTEN PERMISSION MUST BE GRANTED BY COFFEY GROUP PRIOR TO DISTRIBUTION TO PARTIES OTHER THAN THE ADDRESSEE.

CLIENT:  
IRISH WATER  
COLVIL HOUSE,  
24-26 TALBOT STREET,  
MOUNTJOY,  
DUBLIN 1, D01 NP86



PROJECT:  
SAGGART RESERVOIR  
DESIGN AND BUILT CONTRACT

PROJECT NO.:  
J1387

TITLE:  
PAUL HURLEY FIELD  
PLAN LAYOUT

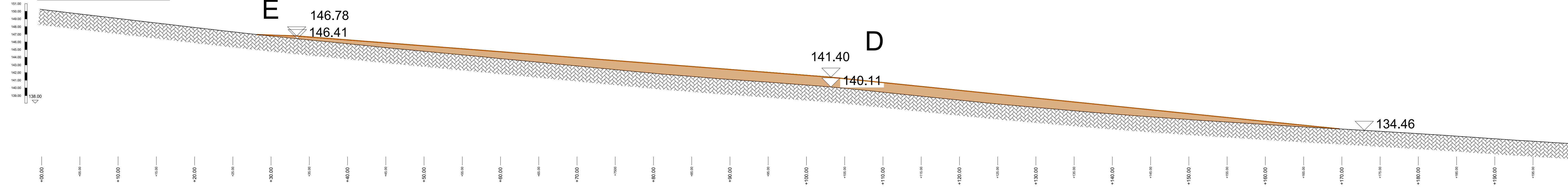
STATUS:  
FOR INFORMATION

DRAWING NO.:  
J1387-PH-001

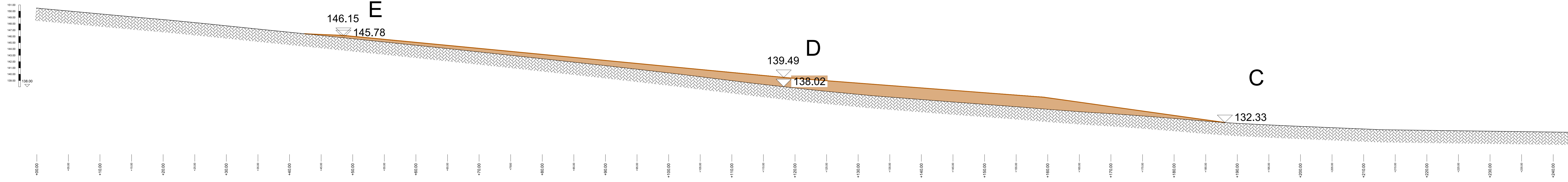
REVISION:  
06

SECTIONS  
Scale 1:250

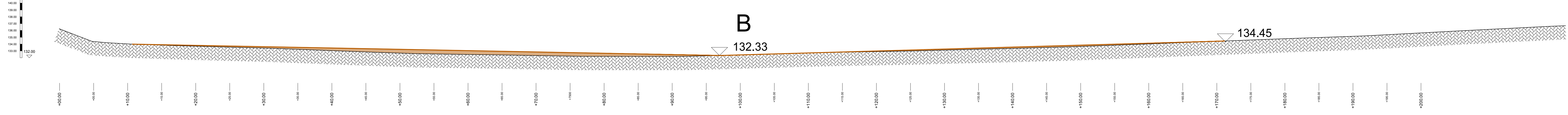
SECTION A-A



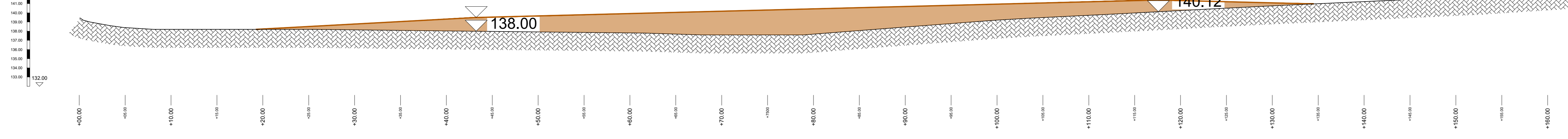
SECTION B-B



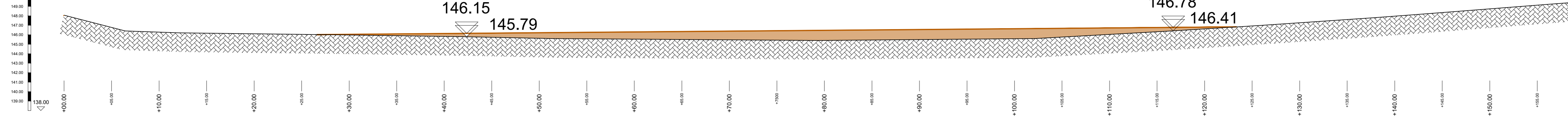
SECTION C-C



SECTION D-D



SECTION E-E



NOTES:  
1. ALL DIMENSIONS ARE IN METRES (m) UNLESS NOTED OTHERWISE.  
2. ALL LEVELS ARE IN METRES AND RELATE TO THE ORDNANCE SURVEY DATUM MALIN HEAD (m) UNLESS NOTED OTHERWISE.  
3. ENSURE THIS DRAWING IS THE RELEVANT REVISION AND READ IN CONJUNCTION WITH ALL RELEVANT DOCUMENTS.  
4. TO BE VIEWED ON A4 PAPER SIZE.

KEY / SYMBOLS:  
SITE BOUNDARY / FENCE  
P. HURLEY FILED BOUNDARY  
FILL AREA

03	AS PER COMMENTS	09/08/2022	PW	AC
02	VOLUMES REDUCED	17/10/2021	PW	AC
01	FOR INFORMATION	06/07/2021	PW	AC
REV.	DESCRIPTION	DATE	BY	CHECK

APPROVED BY:	AC	SIGNED:	DATE:
CHECKED BY:	PS	SIGNED:	DATE:
DRAWN BY:	PW	SIGNED:	DATE:

CONFIDENTIALITY NOTE  
DESIGN, PROCESSING, PROCEDURES AND ASSOCIATED INFORMATION SET OUT HEREIN AND CONTAINED IN ANY SUBSEQUENT REVISIONS, APPENDICES, DRAWINGS AND SCHEDULES IS STRICTLY CONFIDENTIAL AND THE PROPERTY OF COFFEY GROUP. WRITTEN PERMISSION MUST BE GRANTED BY COFFEY GROUP PRIOR TO DISTRIBUTION TO PARTIES OTHER THAN THE ADDRESSEE.

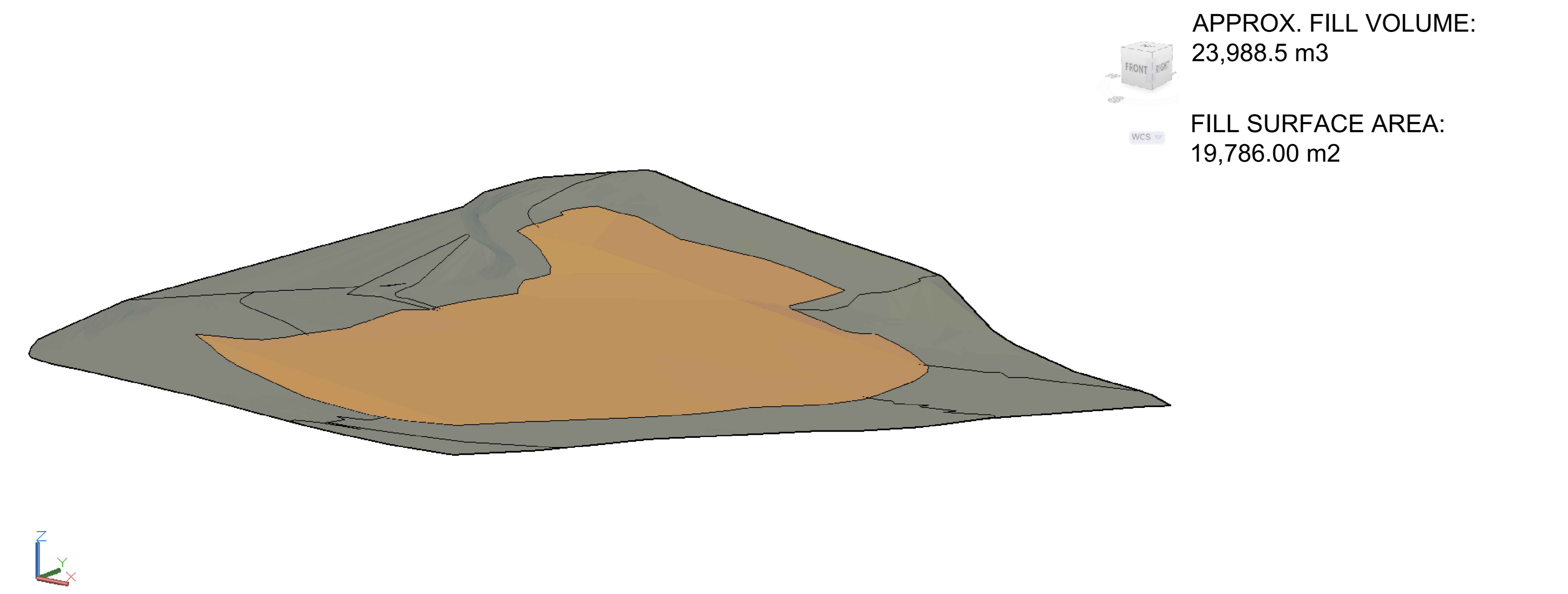
CLIENT:  
IRISH WATER  
COWIL HOUSE,  
24-26 TALBOT STREET,  
MOUNT JOY,  
DUBLIN 1, D01 NP86



PROJECT:  
SAGGART RESERVOIR  
DESIGN AND BUILT CONTRACT  
PROJECT NO:  
J1387  
TITLE:  
PAUL HURLEY FIELD  
SECTIONS

STATUS:  
FOR INFORMATION  
DRAWING NO:  
J1387-PH-003  
REVISION:  
03

CUT / FILL MODEL



APPROX. FILL VOLUME:  
23,988.5 m3  
FILL SURFACE AREA:  
19,786.00 m2

CUT / FILL VOLUMES

Total Cut:	0.60 Cu. M.
Total Fill:	23988.48 Cu. M.
.NET	23987.89 Cu. M. <Fill>

Name	Fill Factor	2D Area(sq.m)	Cut(adjusted)(Cu. ...	Fill(adjusted)(Cu. ...	Net(adjusted)(Cu. ...
<input checked="" type="checkbox"/> VOL5	1.000	19786.01	0.60	23988.48	23987.89 <Fill>

