

Landscape Rationale

To be read in conjunction with landscape drawings

Proposed Development

St. Edmunds.

Western Boundary New Tree Planting and Entrance Detail



RMDA
LANDSCAPE ARCHITECTS + CONSULTANTS

Ronan Mac Diarmada & Associates

Landscape Architects & Consultants

St. Edmunds

Site Context – Surrounding Location



St. Edmunds

Existing Trees along Western Boundary

Beech Trees



Tree Management Plan

Larry Phelan Arborist

(Please see Arboricultural Impact


Assessment for detail on Trees on western Boundary)


4.5 There are a total of 68 nr. Beech trees growing along the western boundary of the site and abutting the access road to the St. Edmunds Apartment Complex.


4.6 The Beech trees are generally in poor condition and the trees have a very low or fell category retention rating classified as either 'C' as defined in BS 5837:2012 as 'Those of low quality and value, but can make a contribution until new planting is established' or 'U' retention category trees - defined in BS5837: 2012 as 'Those in such condition that they cannot be realistically be retained as living trees in the context of the current land use for longer than 10 years'. The characteristics and condition of the Beech trees, the site conditions, and the potential targets nearby (busy road, cycle lane, footpath and buildings) all combine to provide a high tree hazard evaluation with limited abatement options.

5.4 A total of 68 nr. Beech trees growing on the development lands on the western boundary are proposed for removal for reasons of sound arboricultural management or 'Those in such a condition that they cannot realistically be retained as living trees in the context of the current land use for longer than 10 years'.

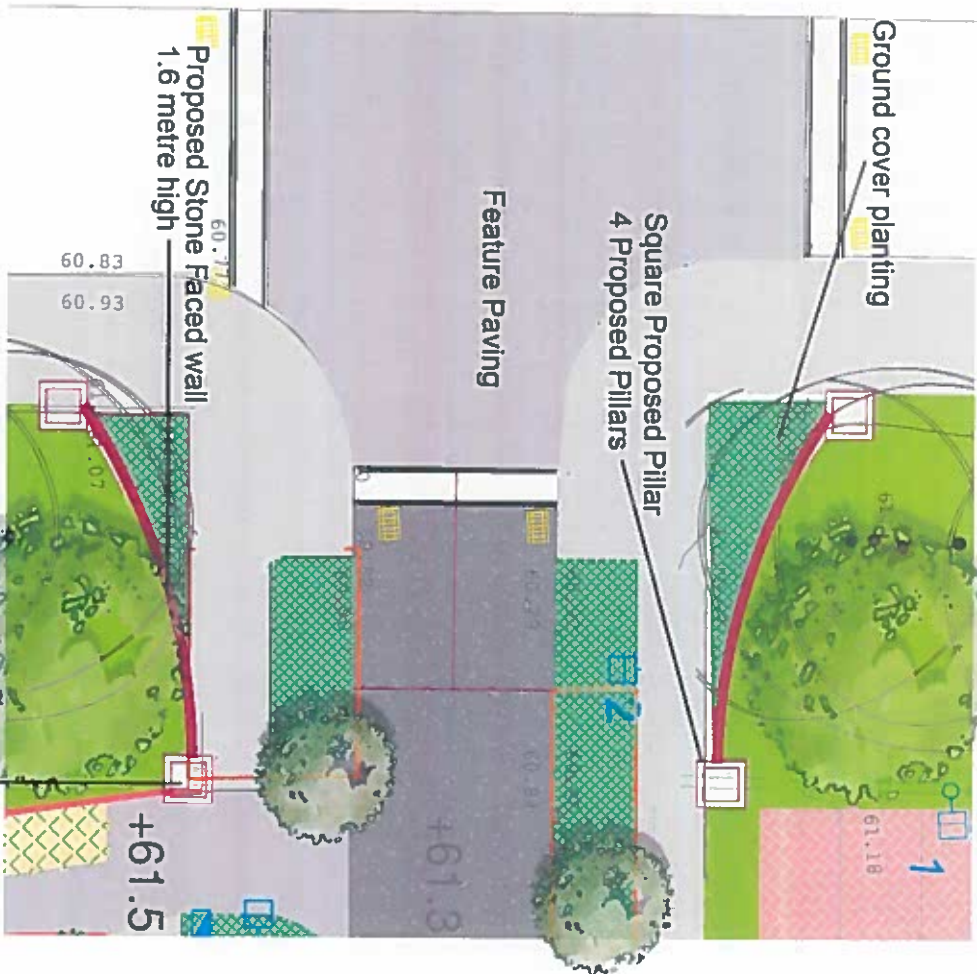
The site plan for Ballinacorney Park shows a complex arrangement of building blocks and cores. The plan is oriented with 'N4 SLIP ROAD' at the bottom and 'BALLINACORNEY PARK' at the top. A red line highlights a specific area along the bottom edge, and a blue line highlights a specific area along the right edge. The plan includes labels for 'CORE 1', 'CORE 2', 'CORE 3', 'CORE 4', 'CORE 5', 'CORE 6', 'BLOCK 1', 'BLOCK 2', 'BLOCK 3', 'BLOCK 4', and 'BLOCK 5'. The plan also shows 'N4 SLIP ROAD' and 'BALLINACORNEY PARK'.

 Trees to be removed and new trees implanted during construction

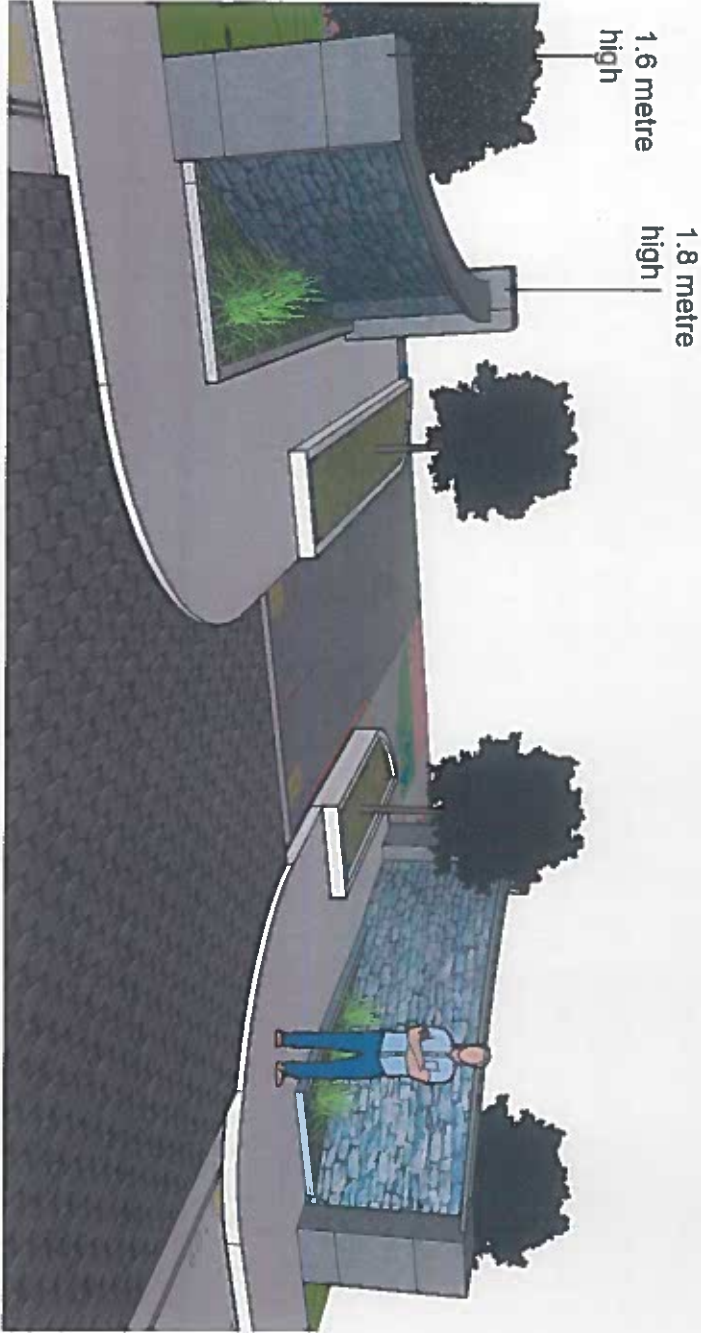
 Existing trees to be retained

 New Native Tree Planting

St. Edmunds – Proposed Entrance



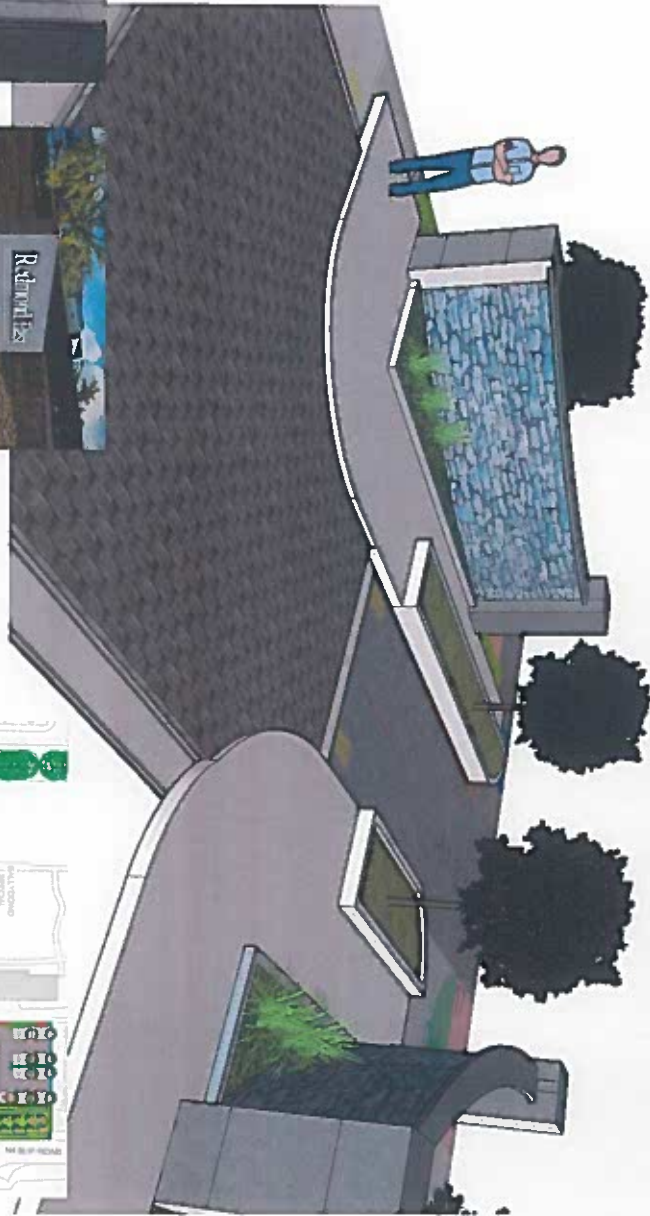
Square Proposed Pillar At Proposed Entrance



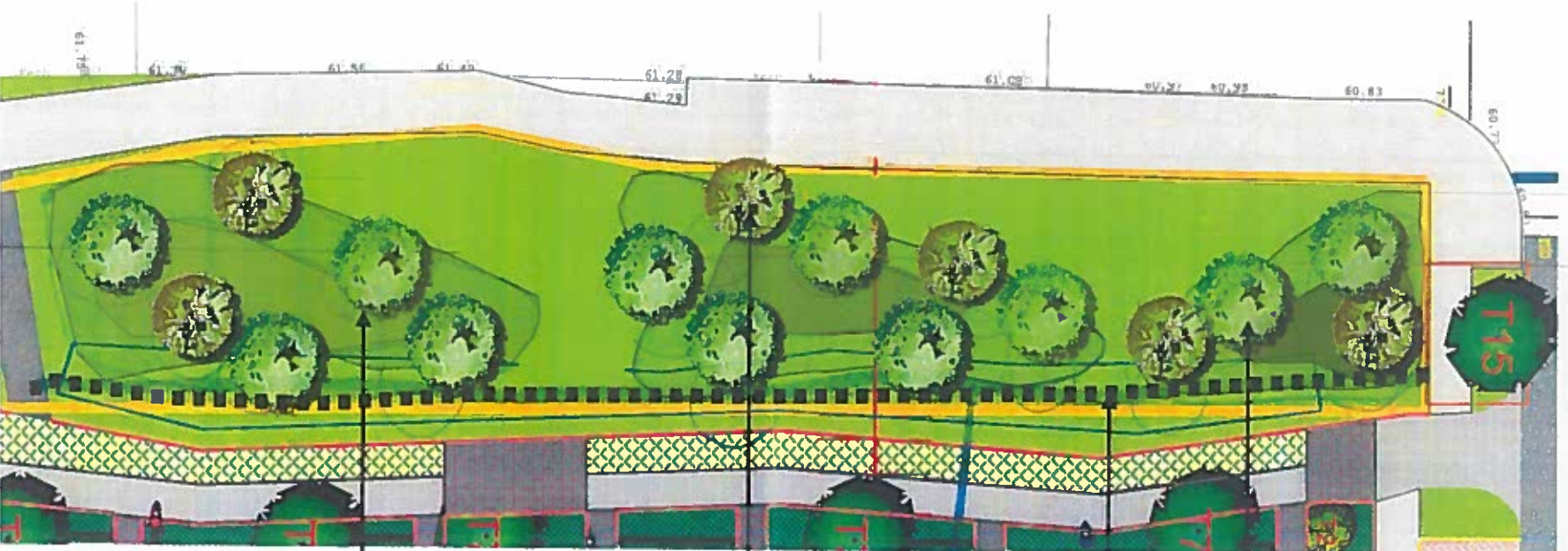
Square Proposed Pillar 1.8 metre High



PROPOSED SIGNAGE



St. Edmunds – Proposed Removal of Existing Trees and to be replaced by grass mounding and selected Trees.



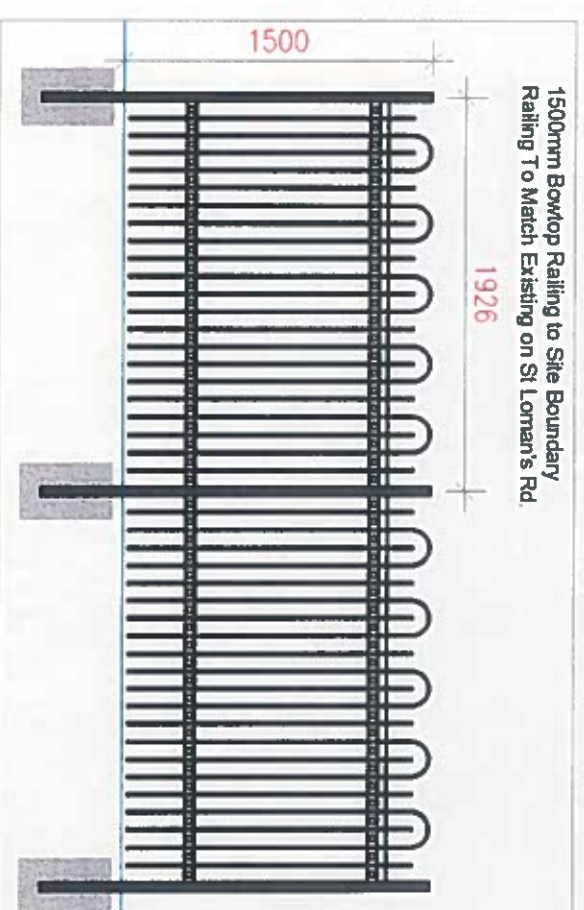
Proposed Tree Planting – *Quercus robur*

Proposed Railing 1500mm High

Proposed Tree planting
Pinus sylvestris

Proposed gentle sloped Grass
mounding

Proposed Railing 1500mm High



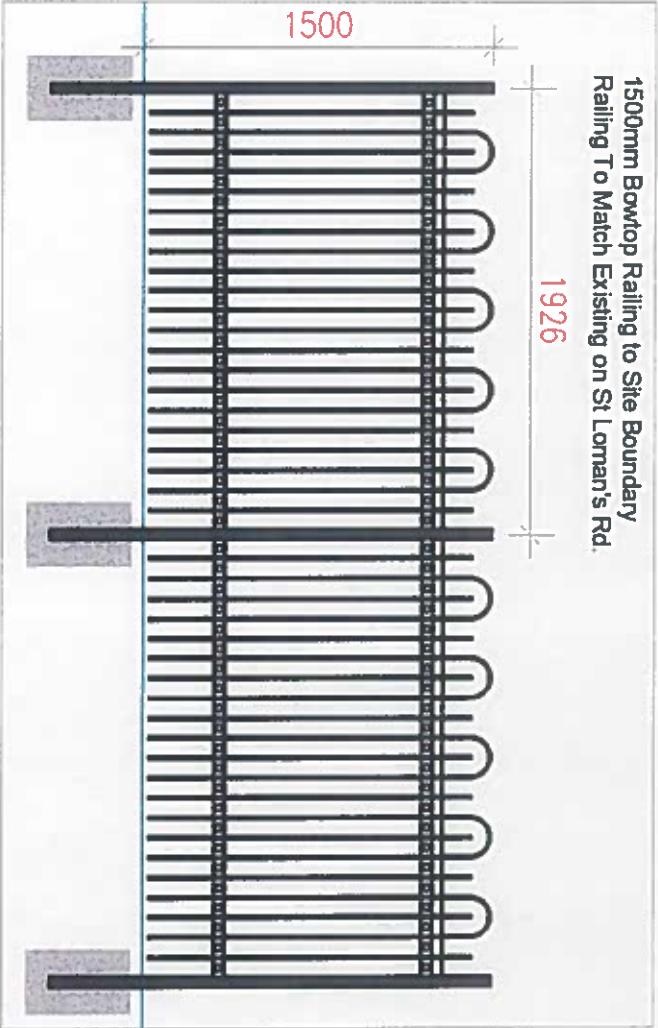
St. Edmunds – Proposed Removal of Existing Trees and to be replaced by grass mounding and selected Trees.



Trees with gentle grass mounding



Proposed gentle sloped Grass mounding



St. Edmunds

Suggested Planting

Proposed Tree Planting

- | No. | Name. | |
|-----|---|----------|
| 1. | Quercus robur | 25-30cm |
| 2. | Pinus sylvestris | -18-20cm |
| 3. | Images are not indicative of size at planting but at a later stage. | |



Quercus robur 25- 30cm '



Pinus sylvestris

