

Concept



The Loop

Encouraging interaction, activity, movement and experiences through the unique and easily communicate concept of the loop. A loop is a shape, the end of which is the connection to the beginning. The central loop within the primary communal open space is designed to encourage movement and interaction among the residents. It is also a very positive shape element when viewed from above by the residents. The loop walks through different spaces and activity areas.

Commencing at the entrance to the building with the communal, raised herb and vegetable garden, then moving through the Clematis scented pergola and around the communal amenity space for outdoor recreation such as yoga. The loop then offers a path through the orchard and on through the mixed use compacted gravel area and then returning to the start again.

Public open space is provided at the entrance with a nod to the old well noted on this spot that could host an information and display panel. A wellness loop continues around the main structure which provides for a longer residents walk, with pocket plazas and seating areas at intervals here and a connection to the streetscape to the west.

Tree protection fencing to be erected prior to construction and retained for the duration of construction activities. To be monitored regularly (see drawing 21149_TP)

Existing trees to be retained

Boundary B

Compacted gravel mixed use area
Boules / Chess / Fitness
Communal orchard

Reinforced grass for fire tender access

Boundary A

Pocket Plaza

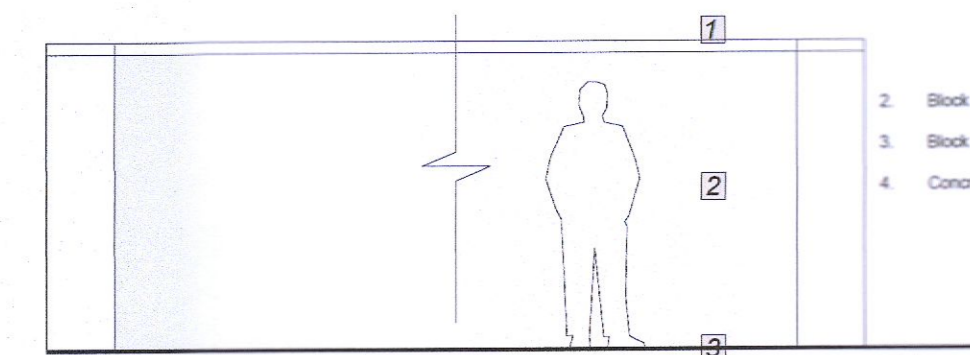
Bio-retention area
Connection to old well

Boundary C

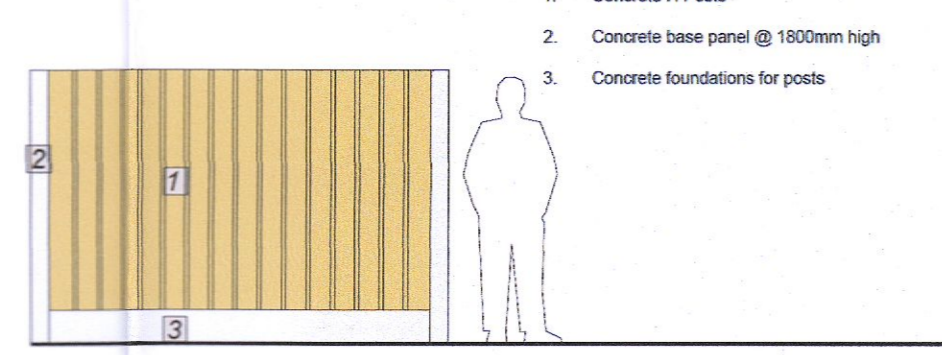
Pedestrian access



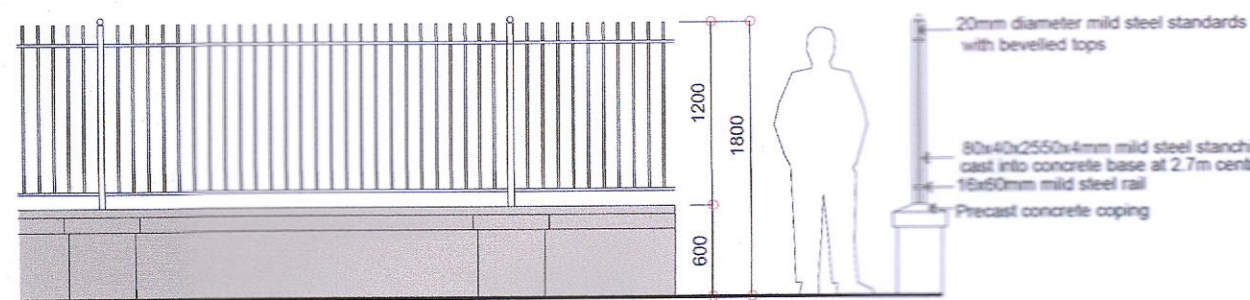
DETAILS Boundary Treatment
sc 1:50



Boundary A - 2m Block, Rendered Walls with Piers and Capping to rear garden boundaries as shown



Boundary B - 1.8m Timber Fencing



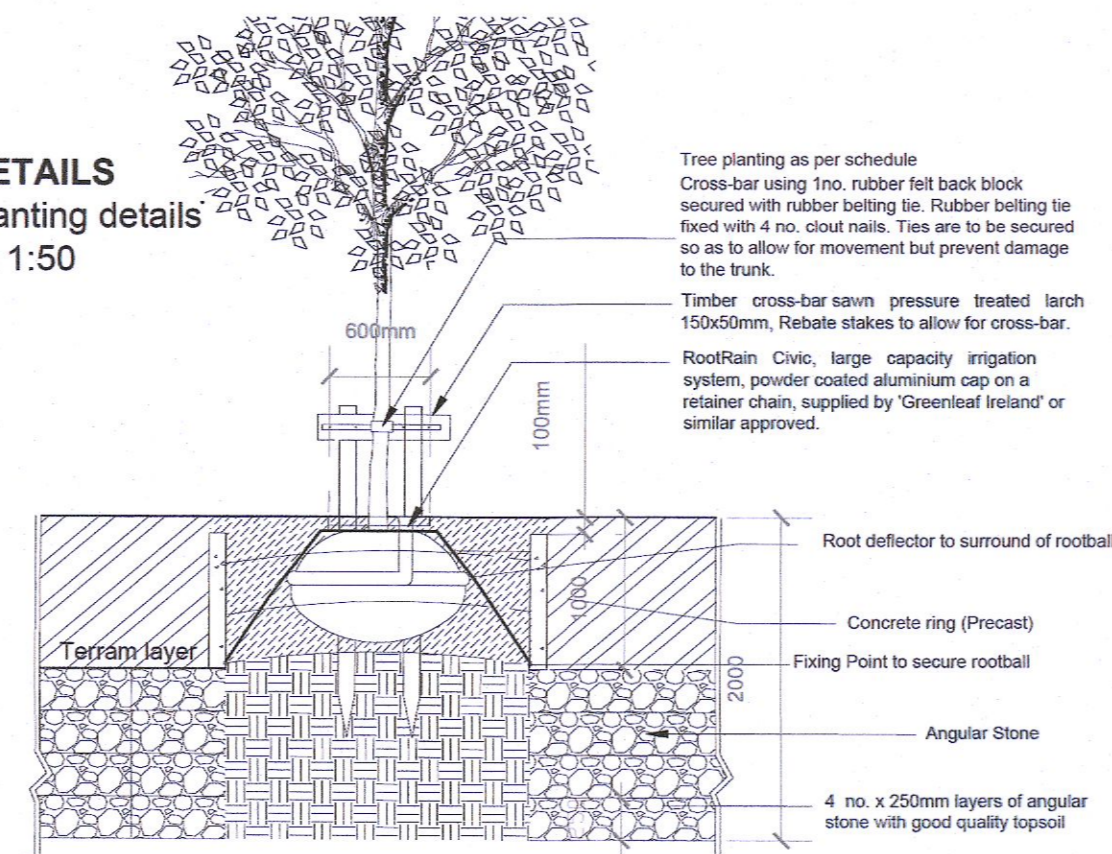
Boundary C - 1.8m plinth wall with rail

Tree Specification

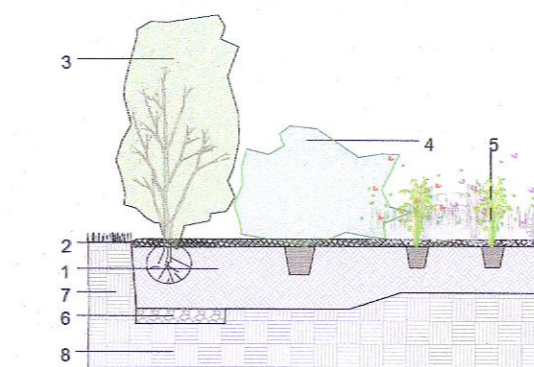
Tree planting throughout the scheme has been selected to blend the development in to its surrounding environs and create focal points within the development. The tree species selected will maximise food and nectar sources for birds and invertebrates. Trees will be planted as Standard and Heavy Standard to provide a reasonable degree of instant maturity to the development. All trees shall be planted between the months of Nov and March. The trees shall be purchased from a reputable nursery as rootball specimens and final order to be agreed by Landscape Architect. The trees shall be planted on delivery. If this is not possible due to weather conditions (wet or frosty), the plants must be held in. Maintenance Watering is essential during the first 2 growing seasons regardless of the weather conditions - 100L/1 Tree/ Month.

Methodology and Guidance Notes: The tree pit should have a diameter at least 100mm greater than that of the root system, with the depth not exceeding the rootball. Any glisters or smeared sides caused by digging shall be scarified with the use of a fork. The tree will be positioned in the centre of the planting pit at the correct depth, taking into account the root flare and finished level. Prior to backfilling the hessian twine/wire cage supporting the rootball shall be loosened or removed. Backfilling shall be carried out in layers of 150mm, ensuring the tree is held upright. At each stage the fill will be carefully firmed in to eliminate air pockets under and around the root system. The final layer of backfill will not be consolidated, but should be of a sufficient depth to allow for settlement and mulching. Formative pruning should be carried out if required, removing dead, damaged, crossing or diseased branches. Refer to Tree planting specification for tree anchoring system. All trees planting operation will be carried in accordance with BS5454:2014 'Trees: from nursery to independence in the landscape' - Recommendations.

DETAILS Planting details
sc 1:50

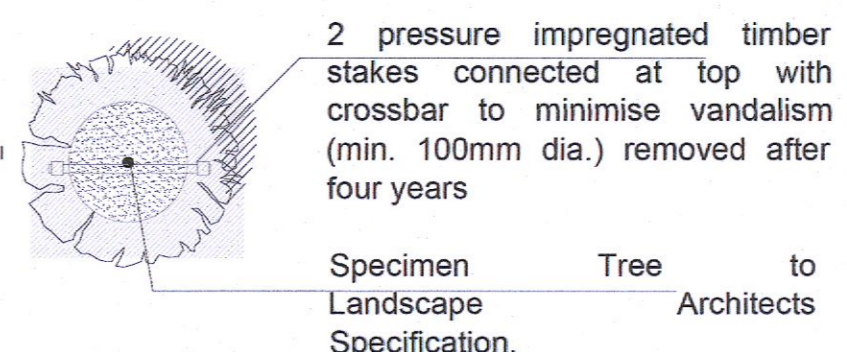


Detail 1 Constructed tree pit

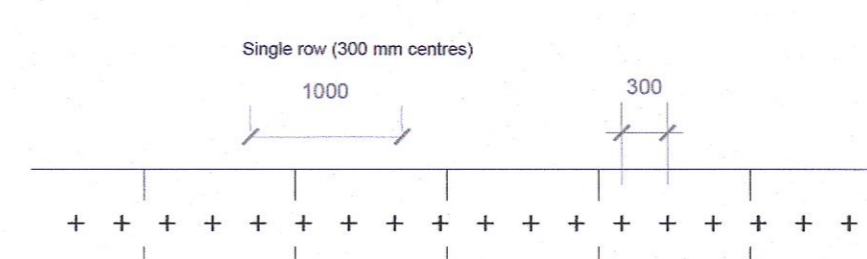


Detail 2 Planting mixture

Square planting pit shall be large enough to accommodate tree roots. Pit to be backfilled with a mix of topsoil, planting compost and polymer granular. The bottom and sides of pit to be broken up by forking prior to planting.

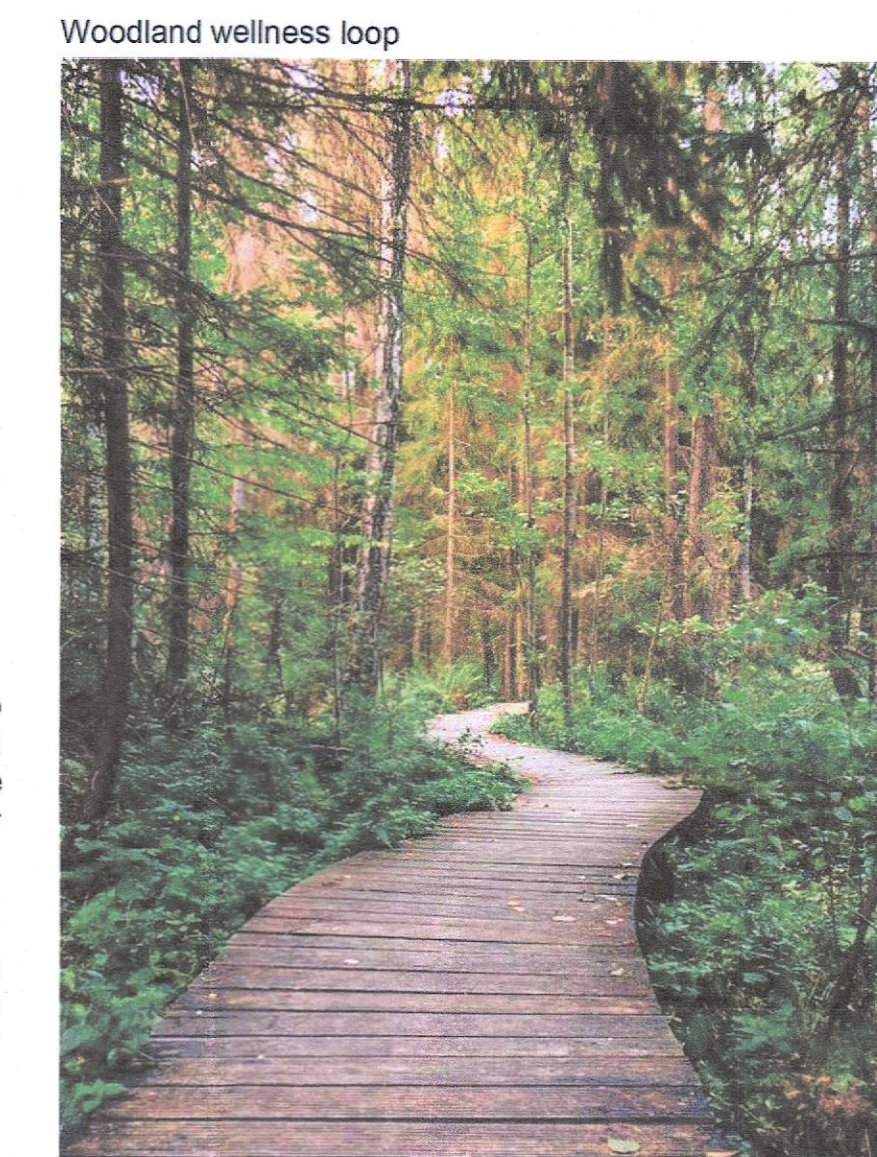
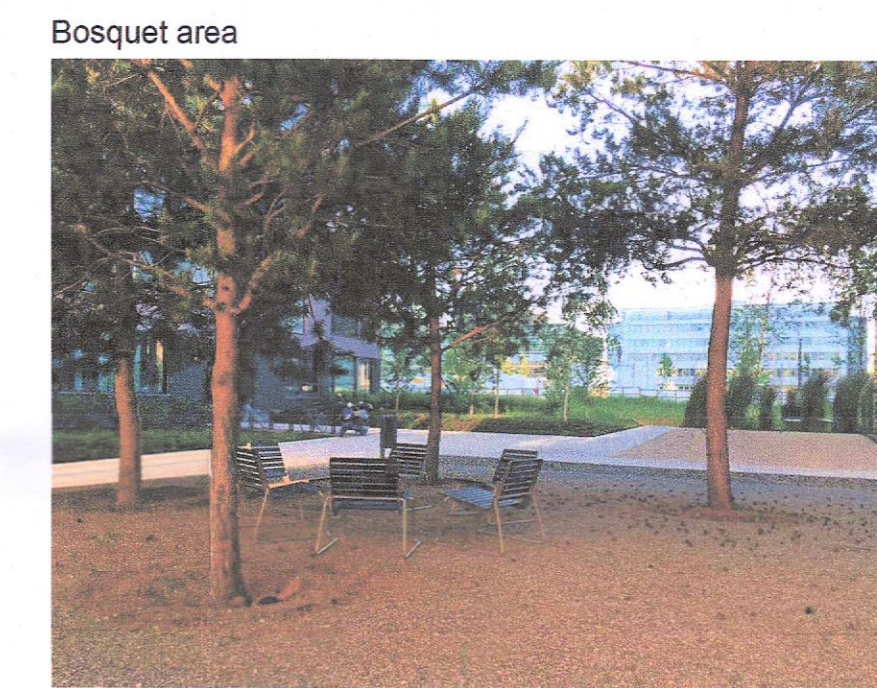


Specimen Tree to Landscape Architects



Detail 3 Hedge planting

Reference Images



Legend

- Existing Trees
- Proposed Trees
Quercus robur
R/B 14-16 cm girth, 2m clear stem
Betula pendula
R/B 14-16 cm girth, 2m clear stem
Sorbus aucuparia
R/B 12-14cm girth multi-stemmed
- Fruit trees
Pyrus chandlerii
Standard, 8-10cm girth
Malus domestica
Standard, 8-10cm girth
Prunus domestica
Standard, 8-10cm girth
- Topiary balls
- Amenity grass Lawn
Play grass seed mix or similar approved
- Wildflower Meadow
Native wildflower Grass meadow
- Ornamental planting areas
- *Rosmarinus officinalis prostratus*
- *Chlorophytum comosum*
- *Stipa tenuissima*
- *Lavandula stoechas*
- *Carex buchananii*
- *Digitalis purpurea*
- *Hydrangea arne*
- Native Hedgerow Buffer
All bare root 1.2m tall planted at 300mm ctrs
- 20% *Ilex aquifolium* (Holly)
- 15% *Prunus spinosa* (Blackthorn)
- 15% *Rosa canina* (Dog rose)
- 15% *Sambucus nigra* (Elder)
- 35% *Crataegus monogyna* (Hawthorn)
- Hardscape**
- Compacted gravel dust
- Small format permeable paving
- Reinforced grass
- Concrete grass paving
- Permeable paving
- Permeable asphalt
- Large format natural permeable paving
- Boundaries**
- Red Line Boundary
- Existing wall to be retained
- 2.0m Block, Rendered Walls
- 1.8m Timber Noise Deflection Fencing
- Plinth wall with rail 1.8m
- Tree protection fence

gannon + associates

+ 087 910 1600
+ info@gannonandassociates.ie
+ Terenure Enterprise Centre
17 Rathfarnham Road, D6W

E 11/08/22	Landscape Plan	JAP	JJG
D 11/11/21	Landscape Plan	BA	JJG
REV DATE	REVISION	DRAWN	CHECKED

CLIENT Riverside Projects Limited	
PROJECT TITLE Tay Lane, Rathcoole Age-Friendly Development	
PROJECT ARCHITECT pacstudio ARCHITECTS & ENVIRONMENTALISTS	
SHEET TITLE Landscape Plan	
SHEET NO. 22116_LP_B	SHEET SIZE A1
SCALE 1:250	REVISION E
STAGE Planning Application	DATE August 2022