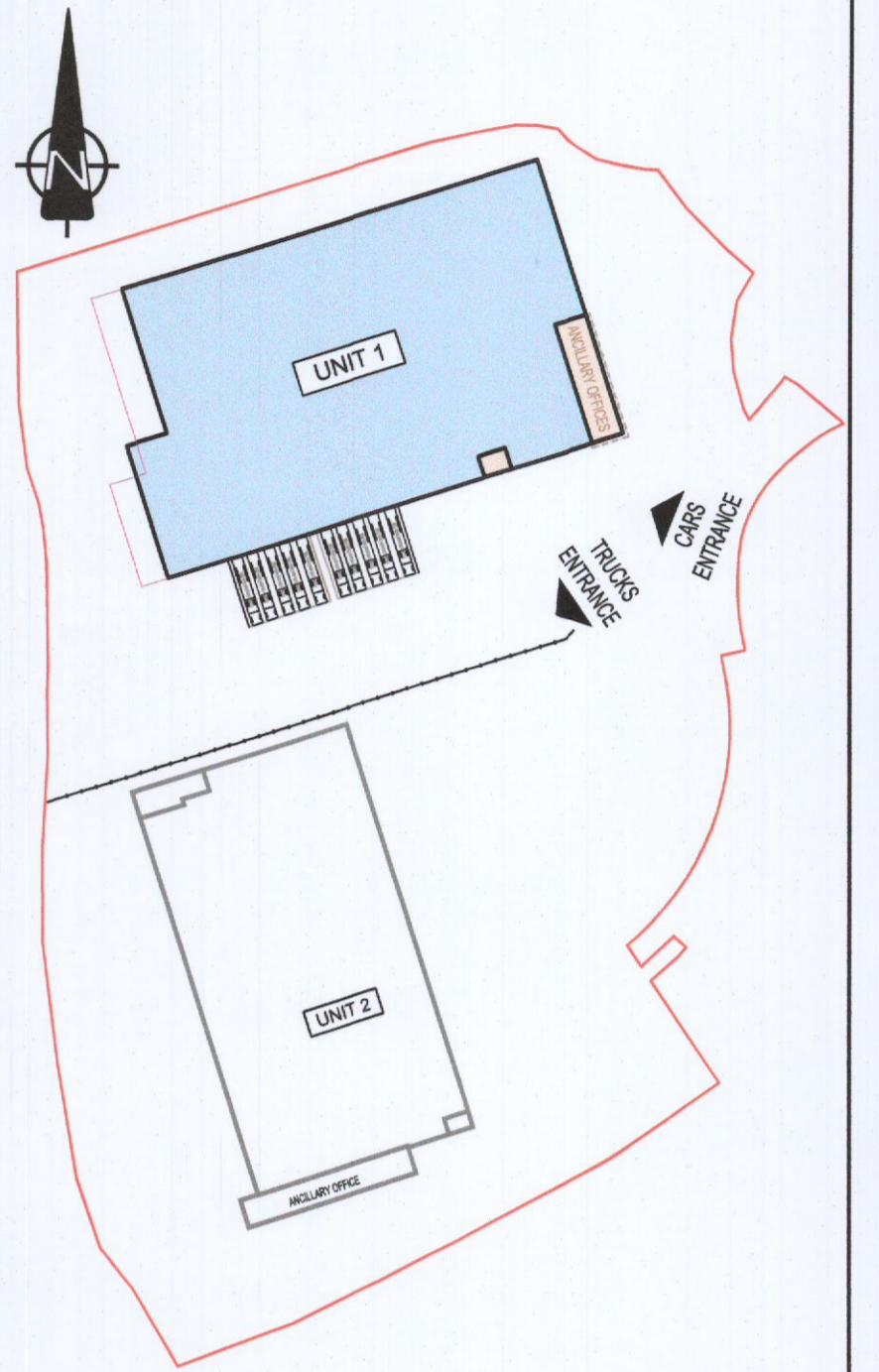


NOTES:

1. THIS DRAWING IS TO BE READ IN CONJUNCTION WITH ALL OTHER RELEVANT DRAWINGS & SPECIFICATIONS.
2. DO NOT SCALE, USE FIGURED DIMENSIONS ONLY.



KEY PLAN
SCALE 1:1750

TABLE OF GROSS INTERNAL FLOOR AREAS & USES:

UNIT	OFFICE	STAFF/ FACILITIES	WAREHOUSE	TOTAL PROP.
GROUND FLOOR	—	245 m ² 2,685 Sq.ft	6,983 m ² 75,194 Sq.ft	7,228 m ² 77,879 Sq.ft
1ST FLOOR	181 m ² 1,948 Sq.ft	74 m ² 795 Sq.ft	—	255 m ² 2,744 Sq.ft
2ND FLOOR	181 m ² 1,948 Sq.ft	74 m ² 795 Sq.ft	—	255 m ² 2,744 Sq.ft
TOTAL	362 m ² 3,896 Sq.ft	397 m ² 4,272 Sq.ft	6,983 m ² 75,194 Sq.ft	7,742 m ² 83,332 Sq.ft

PL3	24-01-2022	TK	PK	PK	ISSUED FOR PLANNING ADDITIONAL INFORMATION
PL2	03-03-2021	SCB	SB	PK	ISSUED FOR PLANNING
Rev	Date	By	Chk.	App.	Revision
Drawing Status: PLANNING AI					
Job Title: WAREHOUSE DEVELOPMENT AT BROWNSBARN, CITYWEST CAMPUS, DUBLIN 24					
Drawing Title: UNIT 1 SECOND FLOOR PLAN					
Architect/Client: Exeter Ireland Property IV B Limited					
KAVANAGH BURKE CONSULTING ENGINEERS					
Tel. 01 - 450 0694		Unit G3, Calmount Pk.		Fax. 01 - 426 4340	
Ballymount, Dublin 12.		Rm: pkavanagh@kavanaghburke.ie		Dublin 12.	
DR	TK	Checked	PK	Approved	PK
Scale	1:200 @A1	Date	JANUARY 2022		
Job No.	D1678	Drawing No.	GA-A-1-03	Rev.	PL3

UNIT 1 - SECOND FLOOR PLAN
SCALE 1:200