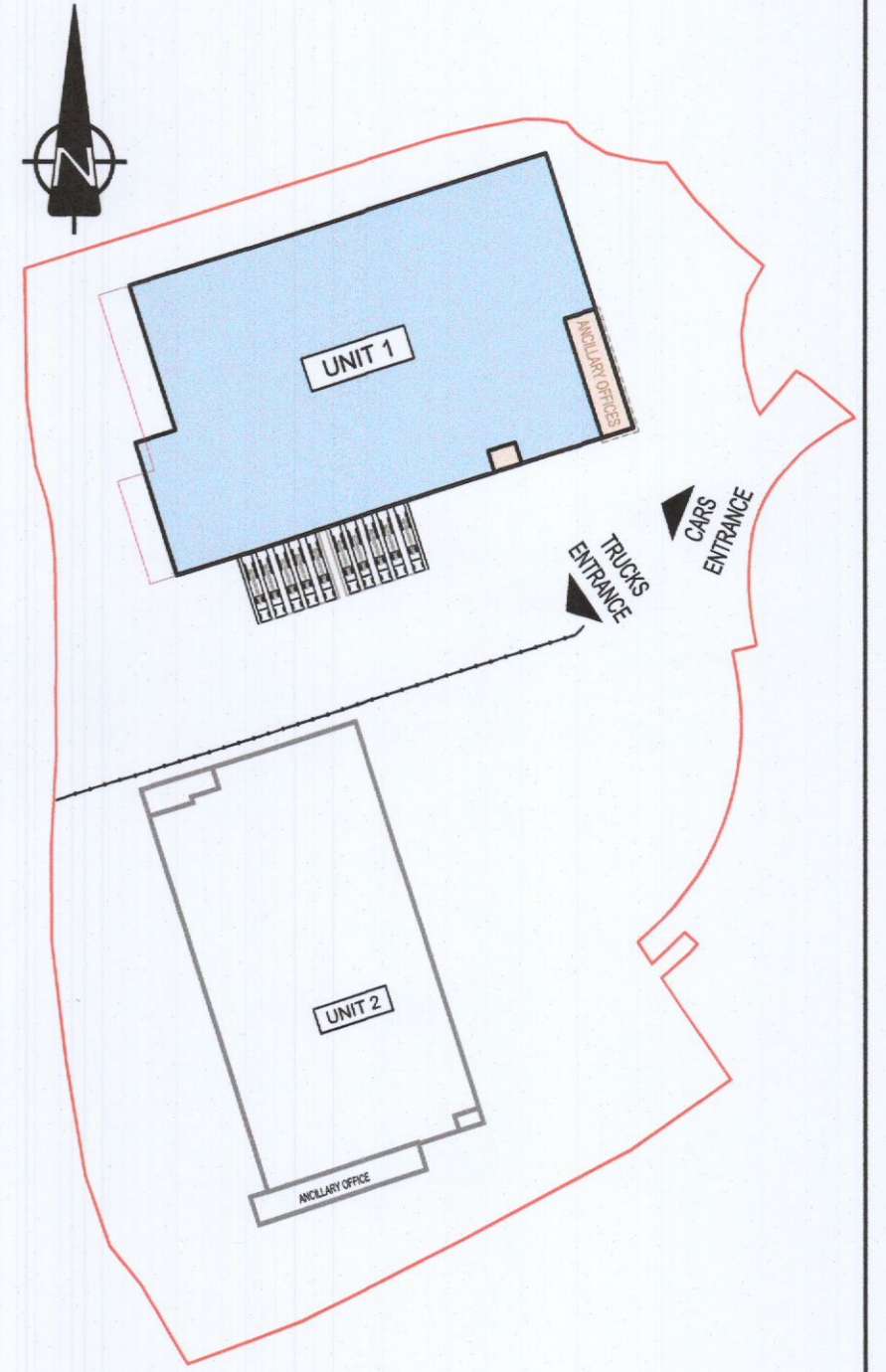


NOTES:

1. THIS DRAWING IS TO BE READ IN CONJUNCTION WITH ALL OTHER RELEVANT DRAWINGS & SPECIFICATIONS.
2. DO NOT SCALE, USE FIGURED DIMENSIONS ONLY.



KEY PLAN
SCALE 1:1750

TABLE OF GROSS INTERNAL FLOOR AREAS & USES:

	UNIT 1	OFFICE	STAFF FACILITIES	WAREHOUSE	TOTAL PROP.
GROUND FLOOR			249 m ² 2,687 Sq.ft	6,983 m ² 75,194 Sq.ft	7,232 m ² 77,881 Sq.ft
1ST FLOOR	181 m ² 1,949 Sq.ft	74 m ² 798 Sq.ft			255 m ² 2,747 Sq.ft
2ND FLOOR	181 m ² 1,949 Sq.ft	74 m ² 798 Sq.ft			255 m ² 2,747 Sq.ft
TOTAL	362 m ² 3,898 Sq.ft	397 m ² 4,272 Sq.ft	6,983 m ² 75,194 Sq.ft		7,742 m ² 83,322 Sq.ft

PL3	24-01-2022	TK	PK	PK	ISSUED FOR PLANNING ADDITIONAL INFORMATION
PL2	03-03-2021	SCB	SB	PK	ISSUED FOR PLANNING
Mark	Date	By	CHK	App.	Revision

Drawing Status: **PLANNING AI**

Job Title: **WAREHOUSE DEVELOPMENT AT BROWNSBARN, CITYWEST CAMPUS, DUBLIN 24**

Drawing Title: **UNIT 1 FIRST FLOOR PLAN**

Architect/Client: **Exeter Ireland Property IV B Limited**

KAVANAGH BURKE
CONSULTING ENGINEERS

Tel: 01 - 450 0694 Unit G3, Calmount Pk.
 Fax: 01 - 426 4340 Ballymount,
 Email: pkavanagh@kavanaghburke.ie Dublin 12.

Drn	TK	Checked	PK	Approved	PK
Scale:	1:200 @A1	Date	JANUARY 2022		
Job No.	D1678	Drawing No.	GA-A-1-02	Rev.	PL3

UNIT 1 - FIRST FLOOR PLAN
SCALE 1:200