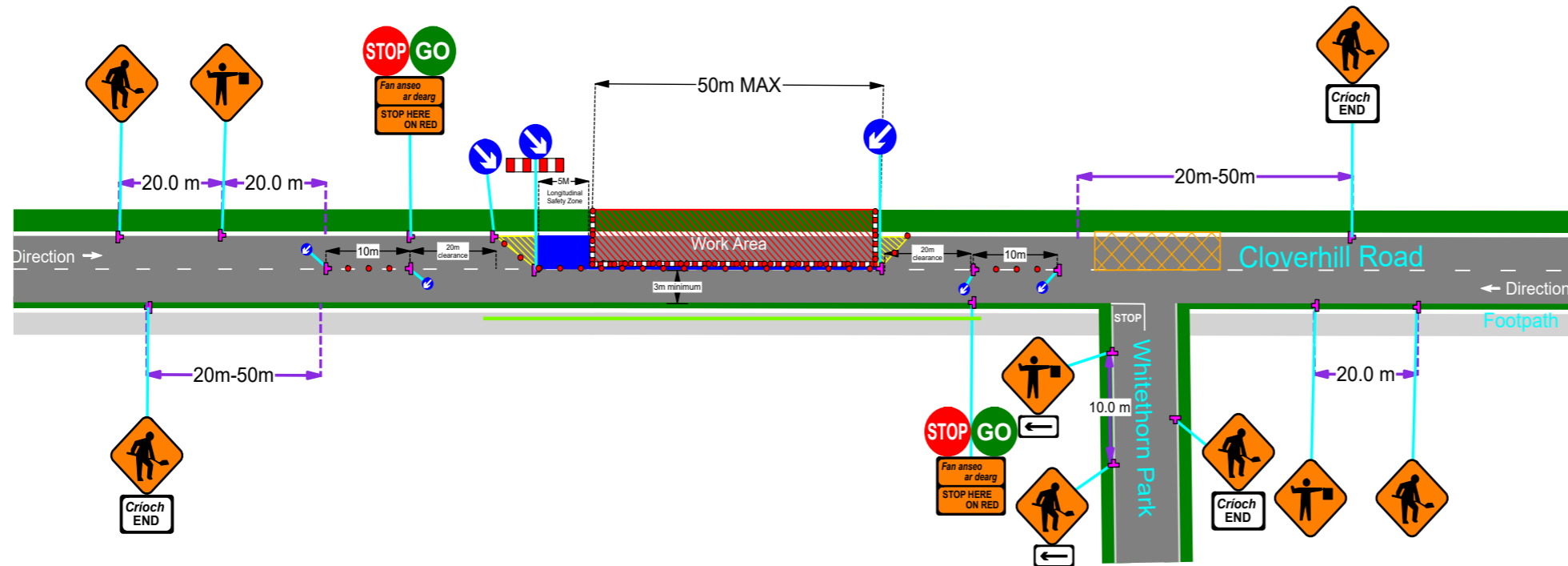


PHASE 4



WK033 (Road Narrows on Right) and WK032 (Road Narrows on Left) to be replaced with WK061 (Flagman Ahead) when removing of vegetation left to meet the road verge, Installing curbing and when pouring concrete for the footpath. The above layout to be used for Stop and Go.

TRAFFIC CAN BE PUT ON ALL STOP BUT NOT LONGER THAN 3 MIN.



Map data ©2022 Imagery ©2022 , Infoterra Ltd & Bluesky, Maxar Technologies

DESIGN PARAMETERS

ROAD LEVEL:	LEVEL 1(iii)
ROADWORKS TYPE:	TYPE A
SPEED LIMIT:	50 km/h

TEMPORARY SIGNS

SIGN VISIBILITY:	50M
NUMBER OF SIGNS:	2
ADVANCE SIGN SPACING:	20M
MINIMUM SIGN SIZE:	600mm

RATE OF TAPER

TAPER AT LANE:	1 IN 5 45DEGREE
TAPER AT HARD SHOULDER:	N/A
TRANSITION LENGTH:	N/A

SAFETY ZONE

LONGITUDINAL:	5.0M
LATERAL:	0.5M

MINIMUM CONE SPACING

AT TAPER:	3M
LONGITUDINAL:	3M

LAMP SPACING DURING HOURS OF DARKNESS

AT TAPER:	6M
LONGITUDINAL:	6M
MIN LANE WIDTH:	3.0M

DESIGN

METHOD: ROAD NARROWS AND STOP AND GO

Legend

- Cone
- Pedestrians
- Safety Zone
- Taper
- Work Area



Client: Goldcross Developments

Project: Cloverhill Rd, Coldcut, Co.Dublin

Title: PHASE 4

Director: SN Proj. Man: PG Checked: PG

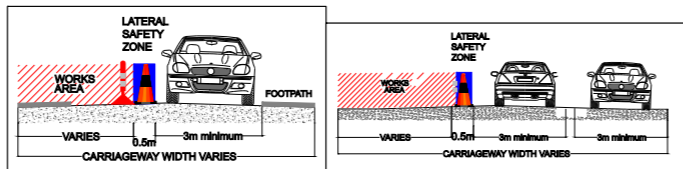
Scale: 1 : 411.9 Drawn by: IS Date: 22/08/2022

Drawing No: 26959 - TMP 004

REV:	DESCRIPTION:	By:	Check:	Date:
000	INITIAL ISSUE	IS	PG	22/08/2022

GENERAL NOTES:

- THIS TRAFFIC MANAGEMENT PLAN MAY ONLY BE IMPLEMENTED BY A TEMPORARY TRAFFIC OPERATIONS SUPERVISOR WHO MUST CARRY OUT A SITE RISK ASSESSMENT TO MODIFY THE MEASURES DESCRIBED TO SUIT ACTUAL SITE CONDITIONS BEFORE IMPLEMENTATION
- THE TEMPORARY TRAFFIC OPERATIONS SUPERVISOR MUST BE IN POSSESSION OF THE VALID CONSTRUCTION SKILLS REGISTRATION CARD 'SIGNING, LIGHTING, AND GUARDING AT ROADWORKS' CONSTRUCTION REGULATIONS 2006.
- THIS TRAFFIC MANAGEMENT PLAN HAS BEEN DRAFTED ON A PRELIMINARY BASIS AND DOES NOT TAKE ACCOUNT OF THE SCALES ASSOCIATED WITH THE DIFFERENT PHASES OF THE PROJECT ARRANGEMENTS FOR MATERIAL DELIVERY, SPOIL REMOVAL AND TEMPORARY ACCESS HAVE NOT BEEN DEVELOPED INTO THE PLAN AS THEY WERE NOT ADVISED AT THE TIME OF PREPARATION.
- IN ORDER THAT THE REQUIREMENTS AS SET PER SECTION 17(2) 2006 ACT ARE SATISFIED, FURTHER ALTERATION TO THE PLAN MUST BE ADVISED BY THE PSDR AS PER CONSTRUCTION REGULATIONS 2006 PS 5 REGS 16-17 AND REG 97 (2a & 2b) RESPECTIVELY. IN ADDITION THE PSCS SHOULD FURTHER DIRECT ANY CHANGES AS THE PROJECT PROGRESSES.
- ALL WORKS ARE TO BE CARRIED OUT IN ACCORDANCE WITH LOCAL AUTHORITY REQUIREMENTS AND TO BE INCLUDED IN THE SITE SPECIFIC SAFETY & HEALTH PLAN.
- SITE INSPECTIONS AND MAINTENANCE OF THE TRAFFIC MANAGEMENT LAYOUT IS TO BE CONDUCTED ON A DAILY BASIS TO ENSURE THE SAFETY AND INTEGRITY OF THE DESIGN.
- CONTRACTOR TO CARRY OUT A SITE RISK ASSESSMENT PRIOR TO THE INSTALLATION OF THE TRAFFIC MANAGEMENT PLAN TO ENSURE THAT CONDITIONS REFLECT THOSE CONSIDERED FOR DESIGN POST SUBMISSION.
- ALL SIGNS USED (AND MANUFACTURED AFTER 01.09.19) MUST CONFORM TO THOSE SPECIFIED IN THE TRAFFIC MANAGEMENT PLAN SO FAR AS THEY ALSO CONFORM TO THE CHAPTER 8 2019. THE SIGNAGE THEREFORE MUST INCORPORATE MICRO PRISMATIC RETROREFLECTIVE SHEETING
- WK 052
 WILL BE USED WHEN A DESIGNATED WORKS ACCESS IS REQUIRED. REFER TO CHAPTER 8 2019 FOR USAGE.



Map data ©2022 Imagery ©2022 , Infoterra Ltd & Bluesky, Maxar Technologies