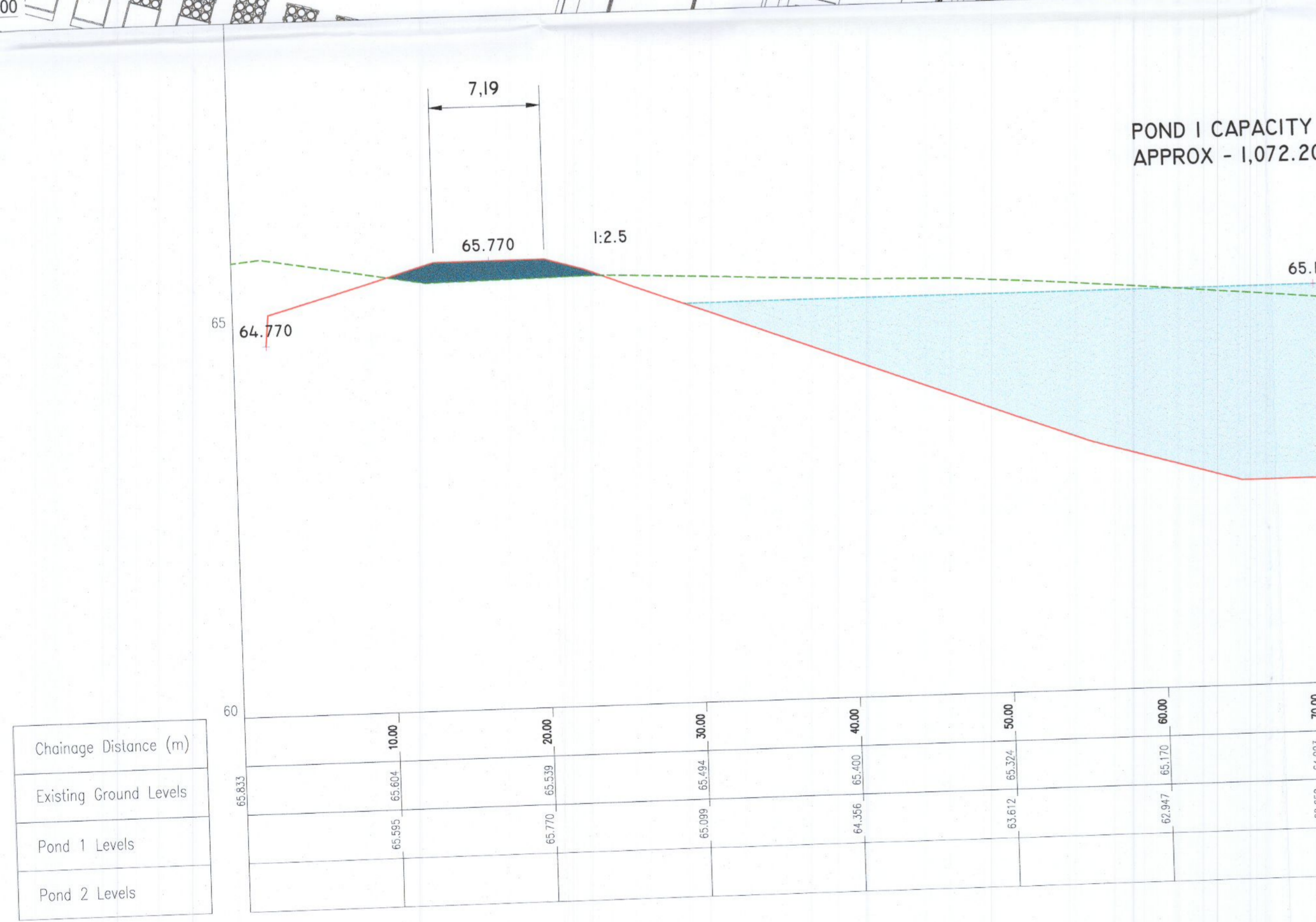


SECTION LINE B-B

150.00	160.00	170.00	180.00	190.00	200.00	210.00	220.00
64.450	64.191	64.085	63.933	63.892	63.745	63.695	62.650
65.700	65.700	62.610	62.050	62.050	62.050	64.169	62.125



SECTION LINE A-A

10.00	20.00	30.00	40.00	50.00	60.00	70.00	80.00	90.00	100.00	110.00	120.00	130.00	140.00	150.00
65.595	65.604	65.539	65.694	64.336	65.324	62.847	62.650	62.650	64.132	63.770	64.007	64.475	64.853	64.450
65.833	65.770	65.095	65.400	65.324	65.170	64.993	64.805	64.674	64.157	64.266	64.007	64.475	64.853	64.450

Chainage Distance (m)	10.00	20.00	30.00	40.00	50.00	60.00	70.00	80.00	90.00	100.00	110.00	120.00	130.00	140.00	150.00
Existing Ground Levels	65.595	65.604	65.539	65.694	64.336	65.324	62.847	62.650	62.650	64.132	63.770	64.007	64.475	64.853	64.450
Pond 1 Levels	65.770	65.770	65.770	65.770	65.770	65.770	65.770	65.770	65.770	65.770	65.770	65.770	65.770	65.770	65.770
Pond 2 Levels	62.650	62.650	62.650	62.650	62.650	62.650	62.650	62.650	62.650	62.650	62.650	62.650	62.650	62.650	62.650

LONGSECTION - POND
H-SCALE 1:1000
V-SCALE 1:200

ALL DIMENSIONS TO BE CHECKED ON SITE
NO DIMENSIONS TO BE SCALED FROM THIS DRAWING
DRAWING IS TO BE READ IN CONJUNCTION WITH RELEVANT CONSULTANTS DRAWINGS



10400 Rodgers Road
Houston, Texas 77070
Phone: 281-374-8644
Fax: 281-374-8992

Henry J Lyons
Architecture + Interiors
henrylyons.com
+353 1 888 3333
info@henrylyons.com
51-54 Pearse Street
Dublin D02 KA66

ethos ENGINEERING
Apex Business Centre,
Blackthorn Rd, Sandford
Industrial Estate,
Sandford, Co. Dublin
Phone: (01) 293 2220

PINNACLE CONSULTING ENGINEERS
SIXTH FLOOR PROSPECT HOUSE 100 NEW OXFORD
STREET LONDON WC1A 1HB Tel: 0207 0433410

REV	DATE	DESCRIPTION	CKH	DRN



STATUS CODE DESCRIPTION
PLANNING

CLIENT
BCEI

PROJECT
EDCDUB06

DRAWING
PROPOSED PONDS

PROJECT NUMBER
220401

DATE
27.05.2022

SCALE@ A1:
AS SHOWN

DRAWN/CHECKED:
RVJ/JHM

STATUS CODE: EDCDUB-PIN-06-ZZ-DR-C-265

REVISION
C01

PINNACLE CONSULTING ENGINEERS
SIXTH FLOOR PROSPECT HOUSE 100 NEW OXFORD
STREET LONDON WC1A 1HB Tel: 0207 0433410