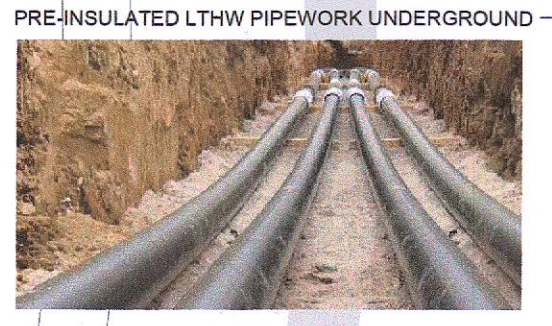
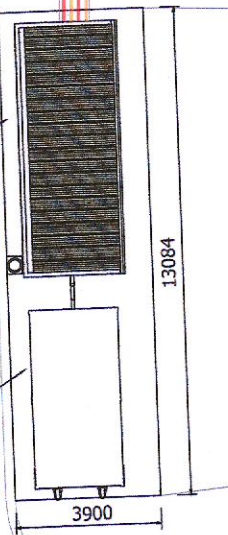


BIOMASS PLANTROOM & FUEL STORE



PRE-INSULATED LTH PIPEWORK UNDERGROUND



PREFABRICATED PLANTROOM COMPLETE WITH:
500kW MULTI FUEL BOILER AND PLUMBING (pumps, header, pressurization unit, buffer tank, expansion vessels, insulated flue, etc) READY TO PLUG IN

Wood Pellet Fuel Store

DO NOT SCALE FROM THIS DRAWING
Copyright in all documents and drawings prepared by AFEC Engineering Ltd, and in any works executed from those documents and drawings shall remain the property of AFEC Engineering Ltd, unless otherwise agreed at project inception.
This drawing is to be read in conjunction with all relevant engineers & specialist drawings, specifications and contract documents. Work to figured dimensions only. All documents to be verified by the contractor on site. All discrepancies should be reported to the architect prior to commencement of the works.

REV	DATE	DESCRIPTION	FR	NB	AW
P02	20.07.2022	Suitable for Planning	FR	NB	AW
P01	20.06.2022	Suitable for Planning	FR	NB	AW



B6, Swords Enterprise Park, Swords, Dublin, K67YX37
W - www.afec.ie E - admin@afec.ie P - 01 6642036

CLIENT Department of Education	AFEC JOB NO. 22005
PROJECT Site @ Kishoge	SCALE (@ A1) 1:200
DRAWING TITLE Site Services Layout	STATUS D1
DRAWING NUMBER 22005-AFEC-00-00-DR-N-1000	REVISION P02