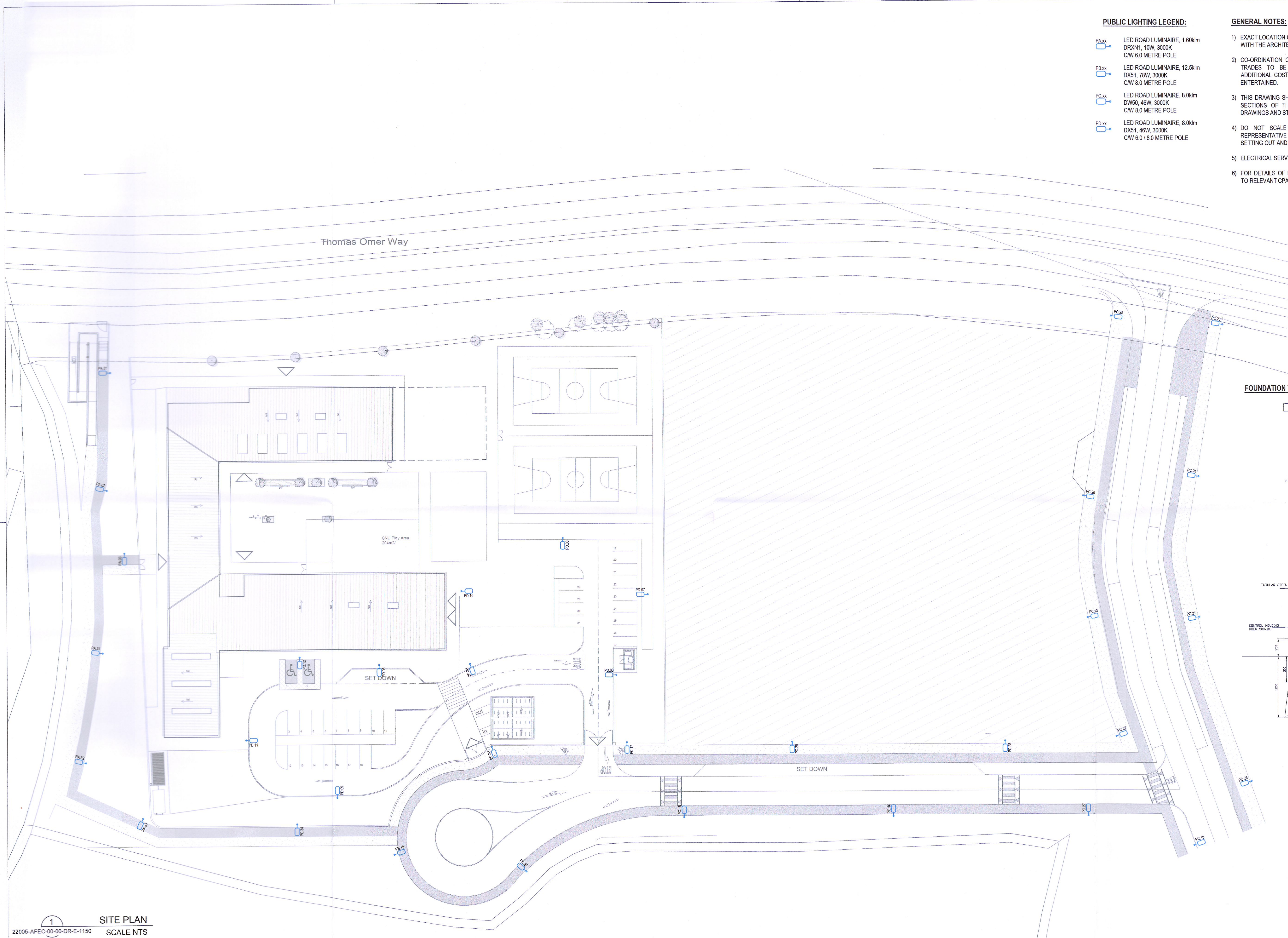


**PUBLIC LIGHTING LEGEND:**

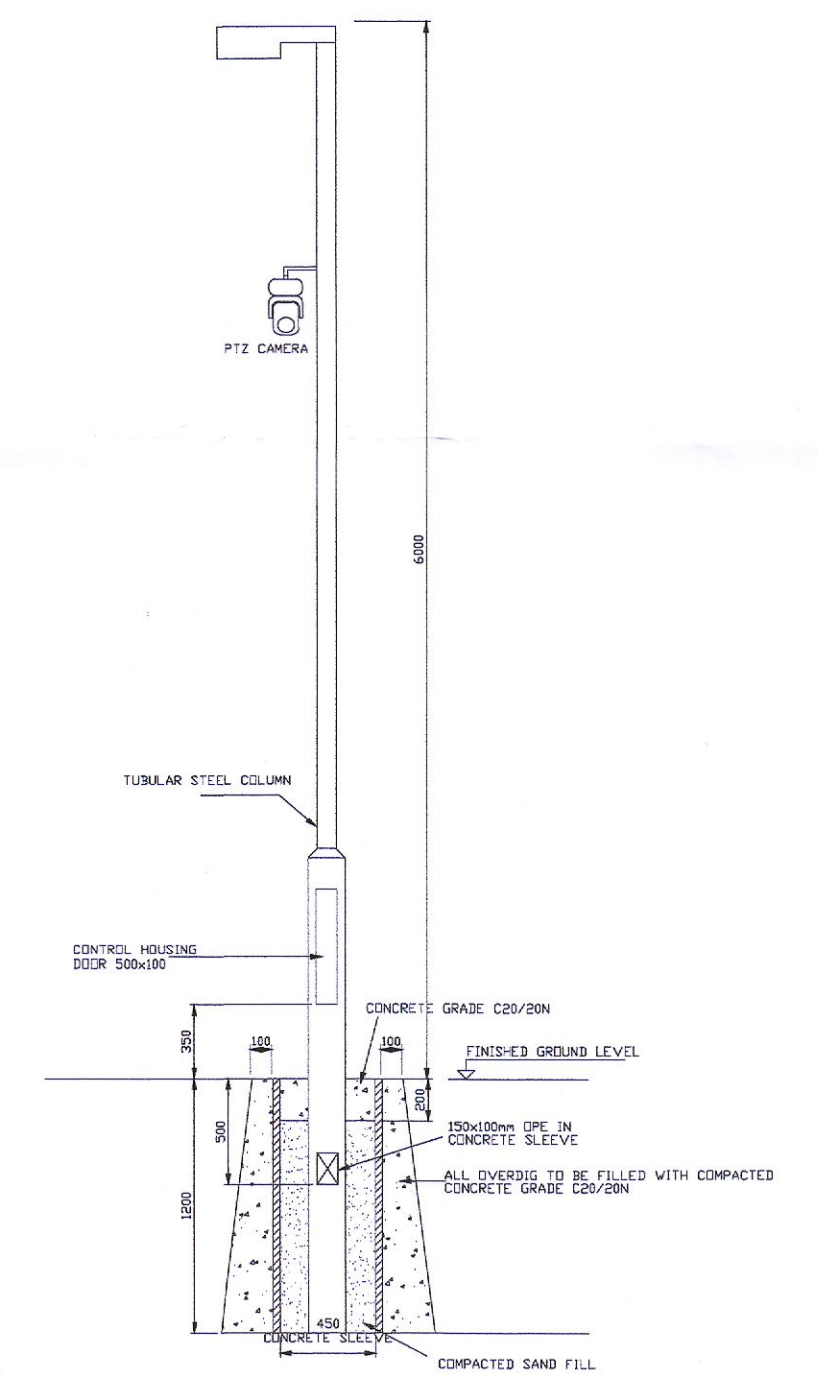
- PA.xx LED ROAD LUMINAIRE, 1.60km  
DRXN1, 10W, 3000K  
CW 6.0 METRE POLE
- PB.xx LED ROAD LUMINAIRE, 12.5km  
DX51, 78W, 3000K  
CW 8.0 METRE POLE
- PC.xx LED ROAD LUMINAIRE, 8.0km  
DW50, 46W, 3000K  
CW 8.0 METRE POLE
- PD.xx LED ROAD LUMINAIRE, 8.0km  
DX51, 46W, 3000K  
CW 6.0 / 8.0 METRE POLE

**GENERAL NOTES:**

- 1) EXACT LOCATION OF SERVICES AND FITTINGS TO BE AGREED ON SITE WITH THE ARCHITECTS AND ENGINEERS PRIOR TO INSTALLATION.
- 2) CO-ORDINATION OF THE ELECTRICAL SERVICES WITH THE OTHER TRADES TO BE AGREED ON SITE PRIOR TO INSTALLATION. ADDITIONAL COSTS DUE TO LACK OF CO-ORDINATION WILL NOT BE ENTERTAINED.
- 3) THIS DRAWING SHOULD BE READ IN CONJUNCTION WITH RELEVANT SECTIONS OF THE SPECIFICATION, SCHEDULES, ARCHITECTURAL DRAWINGS AND STRUCTURAL ENGINEERS DRAWINGS.
- 4) DO NOT SCALE FROM THESE DRAWINGS. THIS DRAWING IS REPRESENTATIVE ONLY. THE CONTRACTOR SHALL ALLOW FOR ALL SETTING OUT AND INSTALLATION AROUND OBSTRUCTIONS.
- 5) ELECTRICAL SERVICES INSTALLATION TO COMPLY WITH IS10101:2020
- 6) FOR DETAILS OF FIRE AND STRUCTURAL REMEDIAL WORKS, REFER TO RELEVANT CPA DRAWINGS.



**FOUNDATION TO 6/8 m LIGHTING COLUMN**



1 SITE PLAN  
22005-AFEC-00-00-DR-E-1150 SCALE NTS

DO NOT SCALE FROM THIS DRAWING  
Copyright in all documents and drawings prepared by AFEC Engineering Ltd. and in any works executed from those documents and drawings shall remain the property of AFEC Engineering Ltd. unless otherwise agreed at project inception.  
This drawing is to be read in conjunction with all relevant engineers & specialist drawings, specifications and contract documents. Work to figured dimensions only. All documents to be verified by the contractor on site. All discrepancies should be reported to the architect prior to commencement of the works.

REV	DATE	DESCRIPTION	DRWN BY	CHKD BY	APPD BY
P02	20.07.2022	Suitable for Planning	FR	NB	AW
P01	20.06.2022	Suitable for Planning	FR	NB	AW



B6, Swords Enterprise Park, Swords, Dublin, K67YX37  
W - www.afec.ie E - admin@afec.ie P - 01 6642836

CLIENT Department of Education	AFEC JOB NO. 22005
PROJECT Site @ Kishoge	SCALE (@A1) NTS
DRAWING TITLE Public Lighting Layout	STATUS D1
DRAWING NUMBER 22005-AFEC-00-00-DR-E-1150	REVISION P02