



Hedgerow planting to be planting in front of existing & proposed Northern boundary walling.

(To be planted in 2 staggered rows @ 400mm centers).

See Legend for Hedging mix

Mixed specimen tree planting to boundary wall border to add colour, softening & screening.

See legend for detail.

Mixed shrub planting to to border areas to introduce colour and interest to the development as a whole.

See legend for detail.

Grade 2 Grass seed mix to all private garden lawns.

Mixed specimen tree planting to boundary wall border to add colour, softening & screening.

See legend for detail.

Mixed shrub planting to to border areas to introduce colour and interest to the development as a whole.

See legend for detail.

Grade 2 Grass seed mix to all private garden lawns.

Hedgerow planting behind existing & proposed front Western boundary walling.

(To be planted in 2 staggered rows @ 400mm centers).

See Legend for Hedging mix

Mixed shrub planting to strip pocket borders along building walls to introduce colour and softening to the buildings.

See legend for detail.

Mixed specimen tree planting to boundary wall border to add colour, softening & screening.

See legend for detail.

Mixed shrub planting to to border areas to introduce colour and interest to the development as a whole.

See legend for detail.

Grade 2 Grass seed mix to all private garden lawns.

Hedgerow planting to be planting in front of existing & proposed Northern boundary walling.

(To be planted in 2 staggered rows @ 400mm centers).

See Legend for Hedging mix

Hedgerow planting to be planting in front of existing Southern boundary walling.

(To be planted in 2 staggered rows @ 400mm centers).

See Legend for Hedging mix

Mixed specimen tree planting to boundary wall border to add colour, softening & screening.

See legend for detail.

Mixed shrub planting to to border areas to introduce colour and interest to the development as a whole.

See legend for detail.

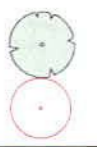
Grade 2 Grass seed mix to all private garden lawns.

SITE AREA:
0.383 HECTARES
0.946 ACRES
xxxxx Open Space - xx%

- OPEN SPACE LAWNS
- OPEN SPACE MIXED PLANTING
- GARDEN MIXED PLANTING

EXISTING TREES

TREE TO BE RETAINED
TREE TO BE REMOVED
TO ACCOMMODATE PROPOSED DEVELOPMENT



NEW TREES

12-14, 14-16 OR 18-20 RELATE TO THE INTERNATIONAL STANDARD METHOD OF SIZING TREES, IT IS THE MEASUREMENT OF THE CIRCUMFERENCE OF THE STEM GIRTH AT 1M FROM THE GROUND.

NB - FINAL TREE LOCATIONS TO BE SET BY LANDSCAPE ARCHITECT FOLLOWING CONFLICT ASSESSMENT STUDY OF SERVICES & LIGHTING PLANS.

TREE ROOT BARRIERS

ALL TREE TO BE PLANTED WITHIN 3M OF ANY SERVICE LINE OR HARD STRUCTURE TO BE FITTED WITH ROOT BARRIER SYSTEM MEMBRANE.

LIGHTING CLEARANCE

ALL TREES TO BE SET A MINIMUM OF 6M FROM ANY PUBLIC LIGHTING TO ENSURE NO DISTURBANCE OF LIGHTS ILLUMINATION FIELD

TIMING SCHEDULE

ALL SPECIMEN TREE AND SHRUB UNDERPLANTING TO BE PLANTED DURING THE FIRST 'BARE ROOT' WINTER PLANTING SEASON (NOV - FEB, AFTER COMPLETION OF ALL CONSTRUCTION WORKS.

PLANTING LEGEND

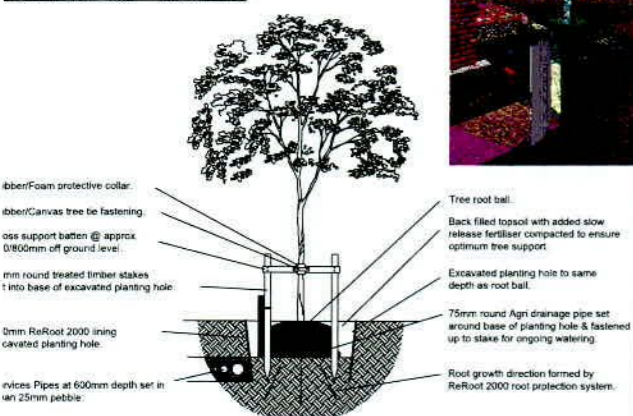
Botanic Name	Common Name	No %	Size
Hedging			
2no. Staggerd rows @ 400mm Centres			
<i>Fagus sylvatica</i>	Beech	100%	60-90c
Open Space Shrub Mix			
<i>Caryopteris x clandonensis</i>		20%	2-3ft
Spirea 'Snowmound'		20%	2-3ft
Hypericum 'Tricolour'		20%	2-3ft
Mahonia Charity		20%	2-3ft
Wegelia Florida		20%	2-3ft
Garden Shrubs Mix			
<i>Hebe pinguifolia</i>		20%	2-3ft
Potentilla Red Ace		20%	2-3ft
Viburnum Davidii		20%	2-3ft
Ceanothus Repens		20%	2-3ft
Euonymus Emerald Gaiety		20%	2-3ft
Specimen Trees			
<i>Betula pendula</i>	Silver Birch	25%	12-14 F
<i>Carpinus betulus</i> 'Frans Fontaine'	Upright Hornbeam	25%	12-14 F
<i>Acer campestre</i> 'Streetwise'	Compact Maple	25%	12-14 F
<i>Tilia henryana</i>	Lime	25%	12-14 F

Green indicates positive pollinator plants selected to enhance biodiversity

HARD LANDSCAPING TREATMENTS

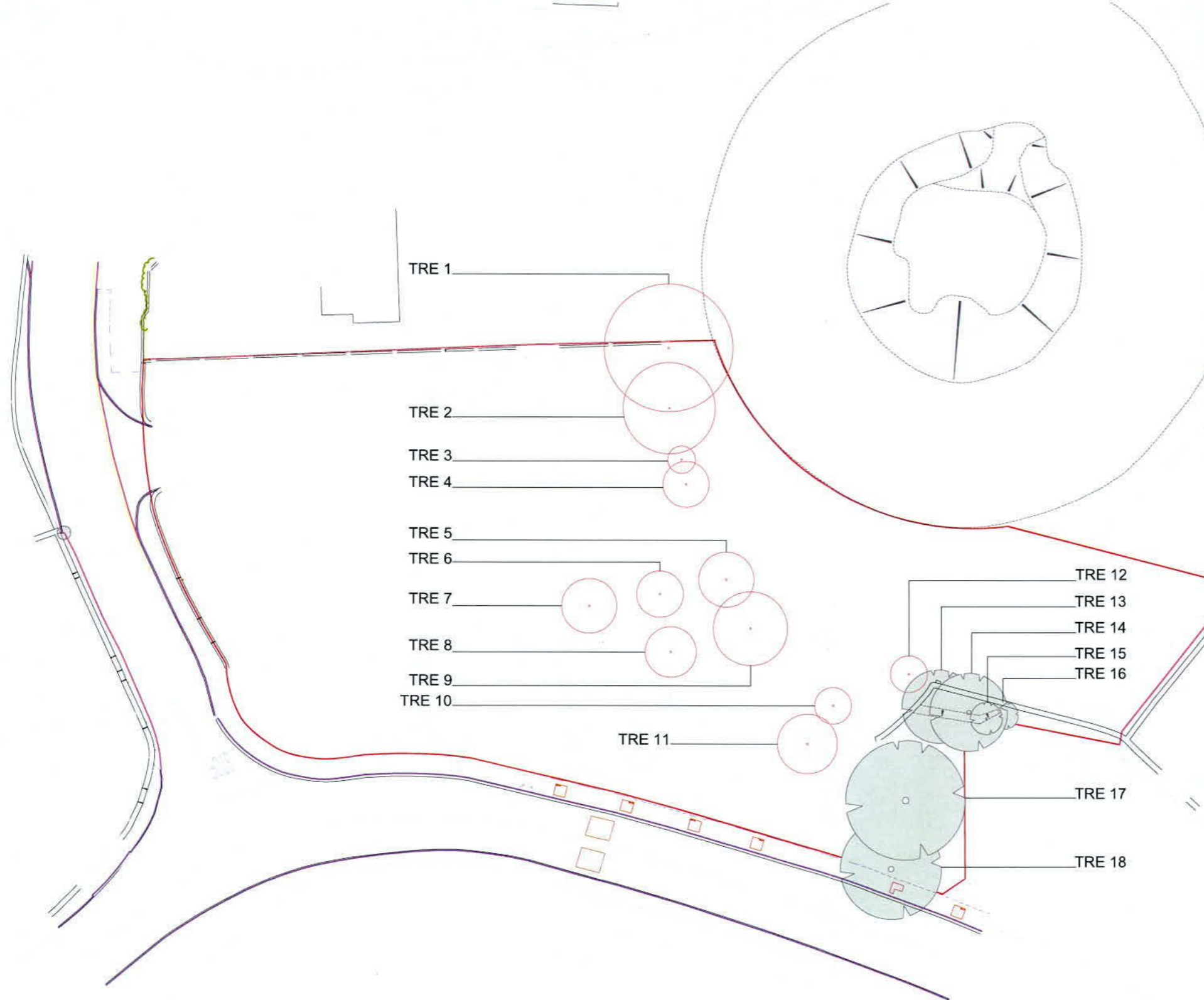
- Parking
Kilsaran Curragh Gold Corrib Cobblelock paving with Silver Granite soldier course edging. (Or similar approved).
- Private Terraces
Kilsaran Silver granite 'Newgrange' Cobblelock paving with matching granite soldier course edging. (Or similar approved).
- Public Path
Poured concrete.
- Road
Tarmacadam (Or similar approved).

SEE PLANTING METHOD - ROOT BARRIER



LANDSCAPE DESIGN LTD	PROJECT PROPOSED APARTMENTS ACCOMMODATION DEVELOPMENT	DRAWING TITLE LANDSCAPE MASTER PLAN
	PROJECT ADDRESS NEWCASTLE, CO. KILDARE	DWG NO. RAT-NEW/LMP/001
The Clay, Ballinacree, Donard, Co. Wicklow, Ireland.	Tel: 087 2869180 E Mail: aj@anthonyjohns.com Web: www.anthonyjohns.com	SCALE 1:500 @ A3
		CLIENT RATHGEARAN LIMITED
		DATE 2.8.22 CHECKED F
		REF LT

All measurements to be checked on site.



LEGEND - TREES All measurements are approximate & noted in meters.

No.	Species (Botanic Name)	Common Name	Height	Spread	Stems	Stem Diameter
1	Cupressus macrocarpa	Cypress	12	10	1	0.9
2	Cupressus macrocarpa	Cypress	10	9	1	0.9
3	Sambucus nigra	Elder	5	3	1	0.2
4	Cupressocyparis Castle'Gold	Golden Leylandii	6	4	1	0.2
5	Acer pseudoplatanus	Sycamore	12	6	1	0.25
6	Aeculus hippocastanum	Chestnut	8	5	1	0.15
7	Laurus Nobilis	Bay	6	4	1	0.125
8	Picea abies	Spruce	8	3	1	0.1
9	Picea abies	Spruce	12	6	1	0.15
10	Acer pseudoplatanus	Sycamore	5	3	1	0.075
11	Sambucus nigra	Alder	5	5	1	0.075
12	Prunus avium	Cherry	5	4	1	0.075
13	Prunus avium	Cherry	9	6	1	0.125
14	Acer pseudoplatanus	Sycamore	8	6	1	.125
15	Tillia Cordata	Lime	4	2	1	.050
16	Acer	Maple	4	2	1	.050
17	Aeculus hippocastanum	Chestnut	15	8	1	1.2
18	Aeculus hippocastanum	Chestnut	12	7	1	.75

EXISTING TREES

TREE TO BE RETAINED 

TREE TO BE REMOVED TO ACCOMMODATE PROPOSED DEVELOPMENT 

<p>LANDSCAPE DESIGN LTD</p> <p>The Clay, Ballinacree, Donard, Co. Wicklow, Ireland.</p> <p>Tel: 087 2869180 E Mail: a@anthonyjohns.com Web: www.anthonyjohns.com</p>	<p>PROJECT PROPOSED APARTMENTS ACCOMMODATION DEVELOPMENT</p>	<p>DRAWING TITLE EXISTING TREE IDENT SURVEY</p>
	<p>PROJECT ADDRESS NEWCASTLE, CO. KILDARE</p>	<p>DWG NO. RAT-NEW/TS/001</p>
	<p>CLIENT RATHGEARAN LIMITED</p>	<p>SCALE 1:500 @ A3</p>
	<p>DATE 2.8.22</p>	<p>DRAWN AJ CHECKED F REF LT</p>

All measurements to be checked on site.