

NOTES:

- FOR STANDARD DOBA NOTES REFER TO DRAWING 2203-DOB-XX-XX-DR-S00.1 & S00.2
- REFER TO ARCHITECTS DRAWINGS FOR ALL SITE & APPLICATION BOUNDARIES
- THIS DRAWING IS TO BE READ IN CONJUNCTION WITH ALL OTHER RELEVANT ARCHITECTS & ENGINEERS DRAWINGS AND SPECIFICATIONS
- USE FIGURED DIMENSIONS ONLY. DO NOT SCALE
- REFER TO SURVEY DRAWINGS FOR EXISTING SERVICES LAYOUTS AND MANHOLE INFORMATION
- ALL EXISTING SURFACES TO BE REINSTATED FOLLOWING DIVERSION OF SERVICES/CONSTRUCTION OF NEW SERVICES
- THE CONTRACTOR SHALL VERIFY ALL DIMENSIONS AND LEVELS WITH ARCHITECTURAL DRAWINGS PRIOR TO START OF CONSTRUCTION. ANY DISCREPANCIES TO BE NOTIFIED TO THE ENGINEER & ARCHITECT FOR RESOLUTION
- CONTRACTOR TO ENSURE ALL WATER & WASTEWATER RELATED WORKS ARE IN ACCORDANCE WITH THE IRISH WATER WATER INFRASTRUCTURE & WASTEWATER INFRASTRUCTURE CODE OF PRACTICE & STANDARD DETAILS DOCUMENTS
- TESTING OF ALL GRAVITY SEWERS AND MANHOLES TO BE IN ACCORDANCE WITH IRISH WATER CODE OF PRACTICE FOR WASTEWATER INFRASTRUCTURE SECTION 4.10 TESTING OF GRAVITY SEWERS & MANHOLES
- ALL CONSTRUCTED DRAINAGE TO BE JETTED CLEAN & A CCTV SURVEY IS TO BE CARRIED OUT AFTER INSTALLATION

- NOTE 1:** MANHOLE COVER LEVELS ARE APPROXIMATE. ACTUAL COVER LEVELS SHOULD MATCH SURROUNDING FINISHED GROUND LEVELS U.N.O.
- NOTE 2:** PIPES WITH LESS COVER THAN
 - 600mm FOR GRASSED AREAS
 - 900mm FOR FOOTPATHS
 - 1200mm FOR ROADS
 TO BE SURROUNDED IN 150mm CONCRETE PROTECTION IN ACCORDANCE WITH IRISH WATER STANDARD DETAIL STD-WW-07
- NOTE 3:** ALL MANHOLE COVERS LOCATED IN GRASS AREAS TO BE SURROUNDED (Min. 200mm SURROUND) IN 100mm THK C20/25 CONCRETE APRON

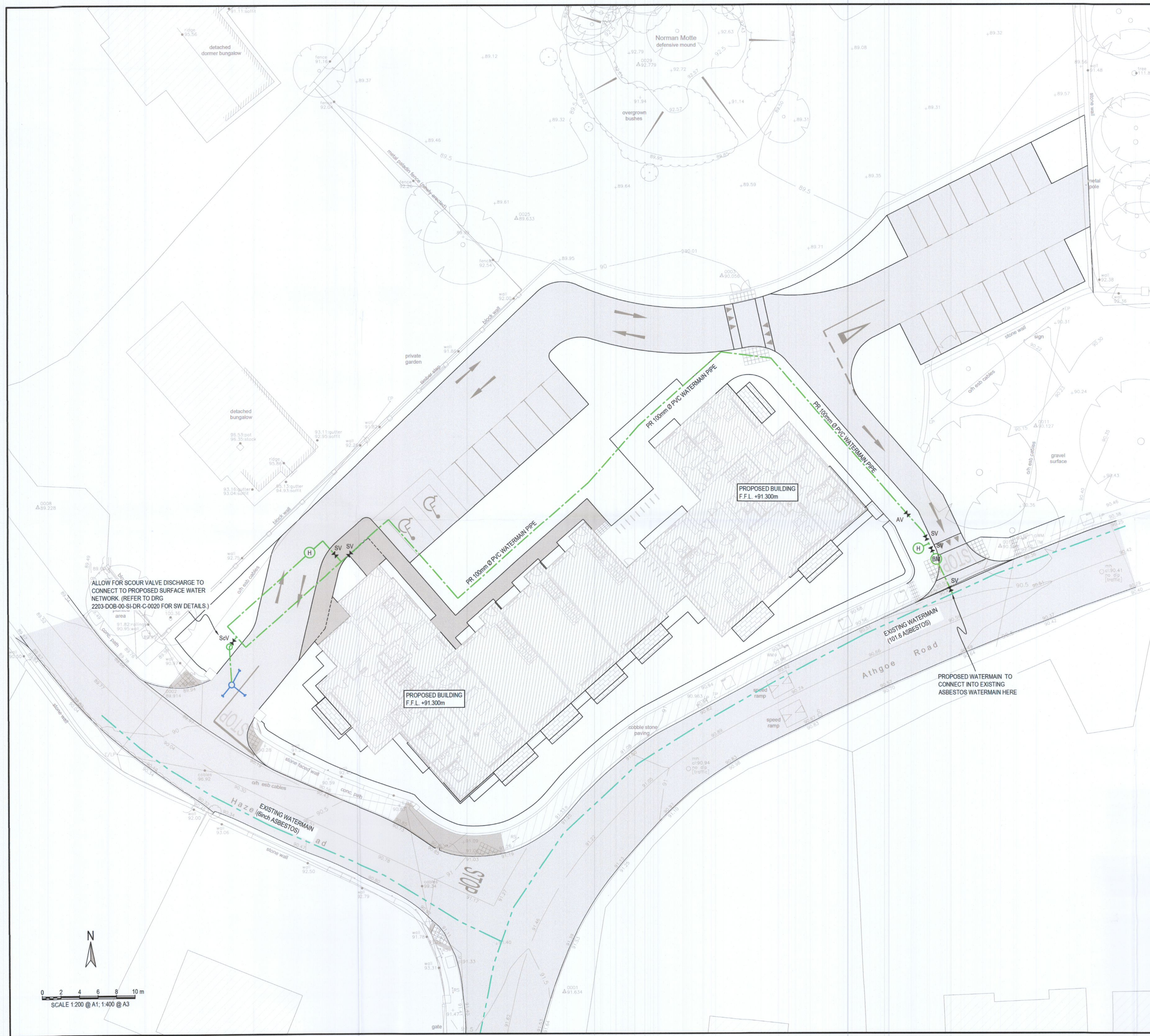
WATERMAIN MATERIAL TO BE IN ACCORDANCE WITH IW-CDS-5020-03 SECTION 3.9.2

3.9.2 MDPE & HDPE PIPES SHALL BE OF A TYPE PE-80 & HAVE AN SDR-11 OR SDR-17 RATING. THEY SHALL CONFORM TO IS EN 12201-PART 1 & PART 2 (PLASTIC SYSTEMS FOR WATER SUPPLY, DRAINAGE & SEWERAGE UNDER PRESSURE - PART 1, GENERAL, & PART 2, PIPES) & I.S. EN 12201-3 (PLASTIC SYSTEMS FOR WATER SUPPLY, DRAINAGE & SEWERAGE UNDER PRESSURE - PART 3: FITTINGS)

WATERMAIN LEGEND:

- PR WATERMAIN
- EXISTING WATERMAIN
- H PR HYDRANT
- BM PR BULK METER
- M PR BOUNDARY BOX
- AV PR AIR VALVE
- SV PR SLUICE VALVE
- ScV PR SCOUR VALVE
- TB THRUST BLOCKS OMITTED FOR CLARITY

ISSUED FOR PLANNING



S2.P01 ISSUED FOR PLANNING		2022-08-05	KN	GB
Rev.	Note	Date	Drawn	Check
<p>DONNACHADH O'BRIEN & ASSOCIATES CONSULTING ENGINEERS</p> <p>UNIT 5C ELM HOUSE MILLENNIUM PARK NAAS CO. KILDARE</p>		<p>PHONE +353 45 984 042</p> <p>INFO@DOBRIEN-ENGINEERS.IE WWW.DOBRIEN-ENGINEERS.IE</p>		
Client: RATHGEARAN LTD				
Project: PR HOUSING DEVELOPMENT, MAIN ST. NEWCASTLE, CO DUBLIN				
Drawing Title: PROPOSED WATERMAIN LAYOUT				
Drawn By: KN	Checked By: GB	Approved By: DOB	Date: JULY 2022	Scale: 1:200
Project Number: DOBA2203		Drawing Number: 2203-DOB-XX-SI-DR-C-0040		Status Code: S2
				Rev Number: P01

