



Private Amenities Space- Balconies 2nd FL				
Unit	Area	Level	Core	Comments
Unit 7	8.3 m <sup>2</sup>	Proposed 2nd.F.L	Core A	
Unit 8	6.0 m <sup>2</sup>	Proposed 2nd.F.L	Core A	
Unit 9	5.4 m <sup>2</sup>	Proposed 2nd.F.L	Core A	
Unit 9	4.3 m <sup>2</sup>	Proposed 2nd.F.L	Core A	
Unit 18	7.7 m <sup>2</sup>	Proposed 2nd.F.L	Core B	
Unit 19	6.4 m <sup>2</sup>	Proposed 2nd.F.L	Core B	

Core A / Unit 7 / 2 no. Bedroom - 4 Person / Type Dual Aspect / Gross Area - 83.7m <sup>2</sup>			
Name	Level	Area	Comments
L/D/K	Proposed 2nd.F.L	30.7 m <sup>2</sup>	
Bedroom	Proposed 2nd.F.L	13.8 m <sup>2</sup>	
Master Bedroom	Proposed 2nd.F.L	12.5 m <sup>2</sup>	
Hallway	Proposed 2nd.F.L	9.8 m <sup>2</sup>	
Bathroom	Proposed 2nd.F.L	3.8 m <sup>2</sup>	
Store	Proposed 2nd.F.L	3.6 m <sup>2</sup>	
E/S	Proposed 2nd.F.L	3.0 m <sup>2</sup>	
Store	Proposed 2nd.F.L	2.4 m <sup>2</sup>	
Total Unit Net Floor Area		79.6 m <sup>2</sup>	

Core A / Unit 8 / 1 no. Bedroom - 2 Person / Type Single Aspect / South facing / Gross Area - 47m <sup>2</sup>			
Name	Level	Area	Comments
L/D/K	Proposed 2nd.F.L	22.9 m <sup>2</sup>	
Bedroom	Proposed 2nd.F.L	11.5 m <sup>2</sup>	
Bathroom	Proposed 2nd.F.L	4.0 m <sup>2</sup>	
Hallway	Proposed 2nd.F.L	2.8 m <sup>2</sup>	
Store	Proposed 2nd.F.L	2.3 m <sup>2</sup>	
Store	Proposed 2nd.F.L	1.5 m <sup>2</sup>	
Total Unit Net Floor Area		44.9 m <sup>2</sup>	

Core A / Unit 9 / 2 no. Bedroom - 4 Person / Type Dual Aspect / Gross Area - 84.7m <sup>2</sup>			
Name	Level	Area	Comments
L/D/K	Proposed 2nd.F.L	30.6 m <sup>2</sup>	
Master Bedroom	Proposed 2nd.F.L	13.0 m <sup>2</sup>	
Bedroom	Proposed 2nd.F.L	12.0 m <sup>2</sup>	
Hallway	Proposed 2nd.F.L	7.7 m <sup>2</sup>	
Bathroom	Proposed 2nd.F.L	4.4 m <sup>2</sup>	
E/S	Proposed 2nd.F.L	3.5 m <sup>2</sup>	
Store	Proposed 2nd.F.L	3.5 m <sup>2</sup>	
Store	Proposed 2nd.F.L	2.9 m <sup>2</sup>	
Store	Proposed 2nd.F.L	2.9 m <sup>2</sup>	
Total Unit Net Floor Area		80.5 m <sup>2</sup>	

Core B / Unit 18 / 2 no. Bedroom - 4 Person / Type Dual Aspect / Gross Area - 84.5m <sup>2</sup>			
Name	Level	Area	Comments
L/D/K	Proposed 2nd.F.L	31.7 m <sup>2</sup>	
Master Bedroom	Proposed 2nd.F.L	13.0 m <sup>2</sup>	
Bedroom	Proposed 2nd.F.L	11.6 m <sup>2</sup>	
Hallway	Proposed 2nd.F.L	9.1 m <sup>2</sup>	
Bathroom	Proposed 2nd.F.L	4.3 m <sup>2</sup>	
E/S	Proposed 2nd.F.L	3.2 m <sup>2</sup>	
Store	Proposed 2nd.F.L	3.1 m <sup>2</sup>	
Store	Proposed 2nd.F.L	2.6 m <sup>2</sup>	
Store	Proposed 2nd.F.L	1.6 m <sup>2</sup>	
Total Unit Net Floor Area		80.1 m <sup>2</sup>	

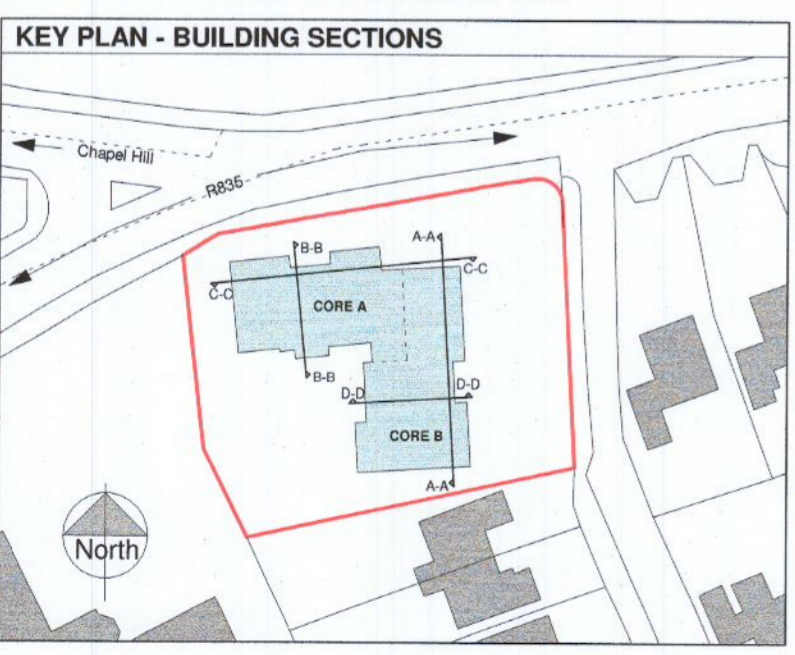
Core B / Unit 19 / 2 no. Bedroom - 4 Person / Type Dual Aspect / Gross Area - 53.5m <sup>2</sup>			
Name	Level	Area	Comments
L/D/K	Proposed 2nd.F.L	23.5 m <sup>2</sup>	
Master Bedroom	Proposed 2nd.F.L	13.8 m <sup>2</sup>	
Bathroom	Proposed 2nd.F.L	5.1 m <sup>2</sup>	
Hallway	Proposed 2nd.F.L	5.0 m <sup>2</sup>	
Store	Proposed 2nd.F.L	4.0 m <sup>2</sup>	
Total Unit Net Floor Area		51.4 m <sup>2</sup>	



Proposed 2nd.F.L  
Scale: 1 : 100

Apartment Unit Type	
[Light Blue]	1 Bed Apartment (2 person)
[Light Green]	2 Bed Apartment (3 Person)
[Light Yellow]	2 Bed Apartment (4 Person)
Apartment Access - Stair/ Lift cores	
[Light Green]	Apartment access Stair/ Lift core A
[Light Blue]	Apartment access Stair/ Lift core B
Apartment Private Amenity Space	
[Light Blue]	Balcony

SECOND FLOOR GROSS FLOOR AREA: 421m<sup>2</sup>



\*NOTE: ALL LEVEL HEAD DATUM TO MALIN HEAD

**PMCA architects**

104 Francis St. Dublin 8  
e-Mail: info@pmcaarchitects.ie  
Website: www.pmcaarchitects.ie  
Tel: 01 4549911

Project: Proposed Residential Development Hillhouse

Client: Frances Dowling Title: Proposed Second Floor Plan

Purpose of Issue: PLANNING Project No: 18-19 Drawing No: PL 1-004

Date: 05-08-2022 Scale (@ A2): As indicated Drawn by: PC Checked by: MMC REV: