

SYMBOLS:

LANDLORD 1NO. 110Ø SITE LIGHTING PVC UNDERGROUND DUCT

ALL EXISTING SERVICES TO BE CONFIRMED BY GPR SURVEY; ROUTES INDICATED ARE FOR INFORMATION ONLY.

SYMBOLS:

MANHOLE/DRAW CHAMBER

ESBN EXISTING MV UNIT SUBSTATION

PROPOSED NEW LIGHTING

EXISTING SITE SERVICES LAYOUT

ESBN EXISTING KIOSK UNIT

SITE LIGHTING MINI PILLAR

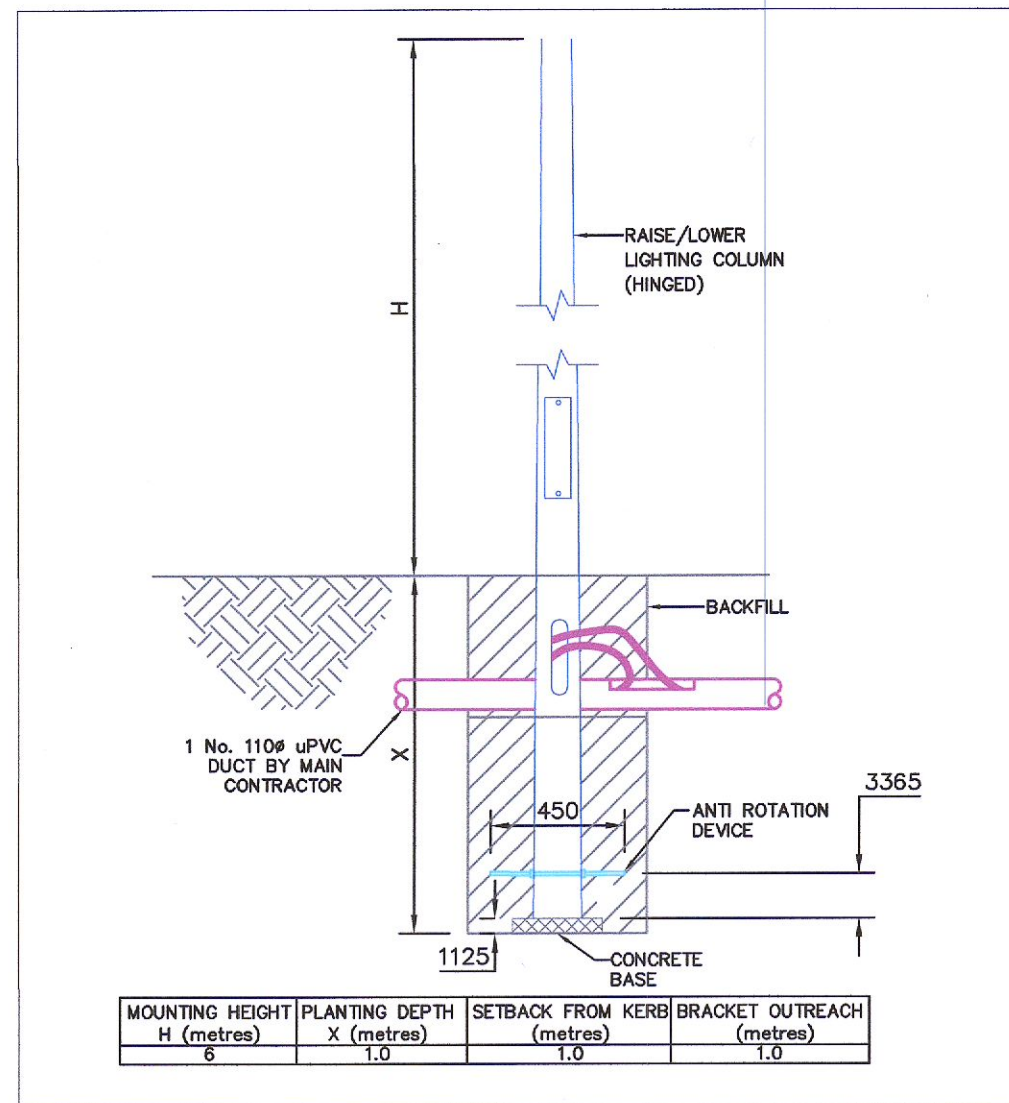
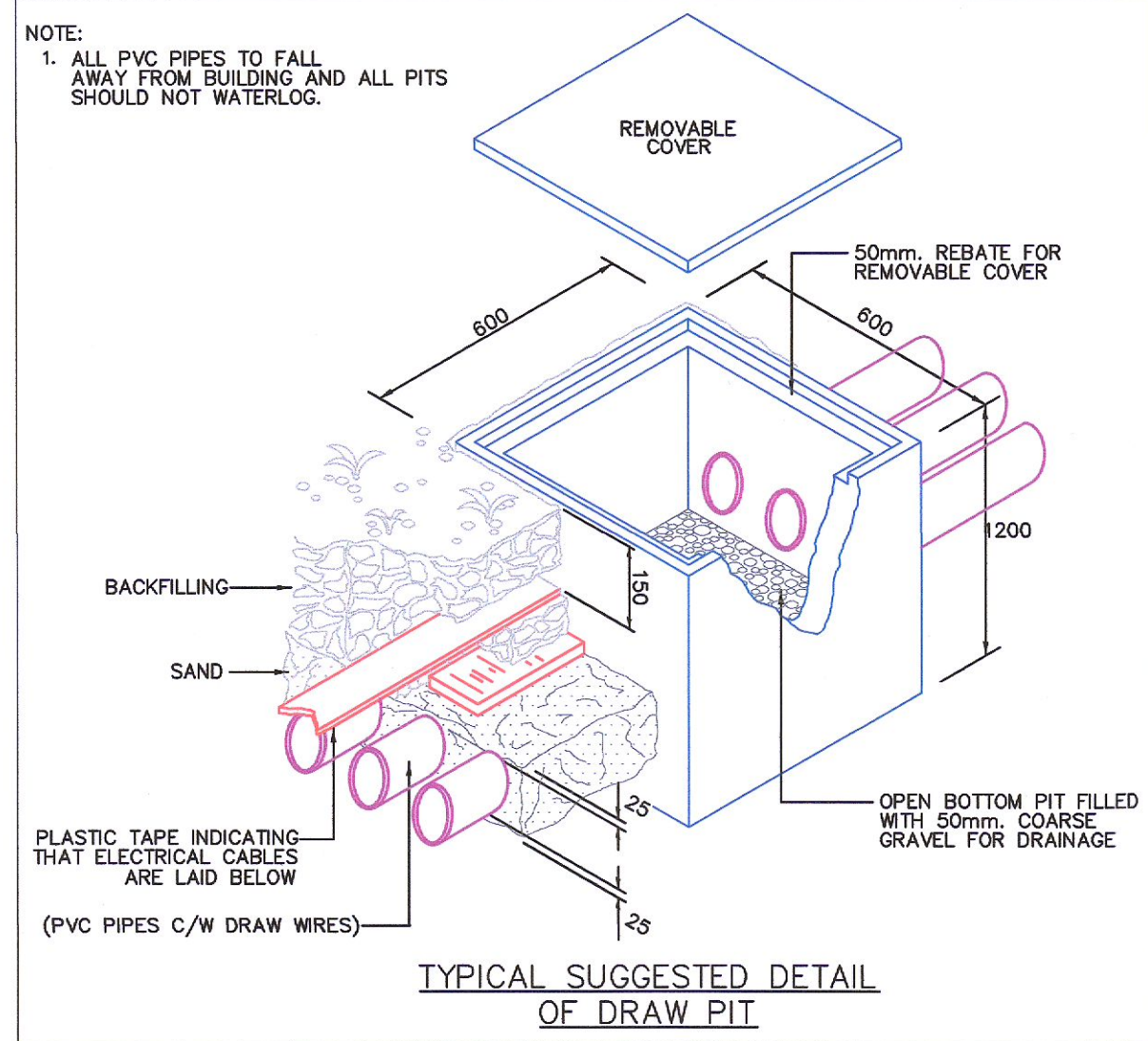
ROAD LIGHTING HAND OFF AUTO KEY SWITCH & BOOST CONTROL PANEL FOR ROAD LIGHTING, IP 65 RATED WITH IK10 IMPACT PROTECTION

TYPE "A" LIGHTING TO BE SUPPLIED BY GAELSCOIL CHLUAIN DOLCAIN. LIGHTING INDICATED WITHIN GAELSCOIL CHLUAIN DOLCAIN CAR PARKING AREAS

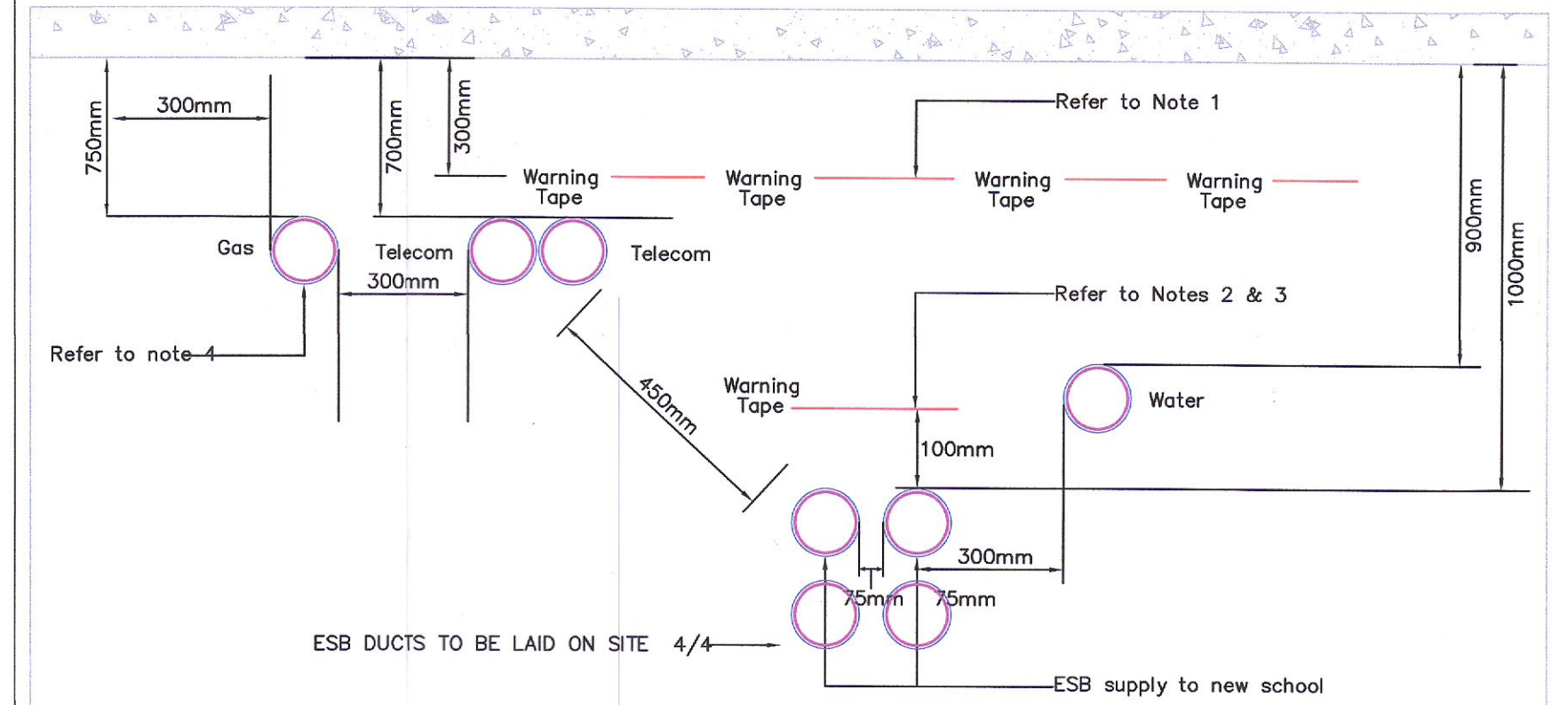
TYPE "B" LIGHTING TO BE SUPPLIED BY GAELSCOIL na CAMOIGE. LIGHTING INDICATED WITHIN GAELSCOIL na CAMOIGE CAR PARKING AREAS

TYPE "C" LIGHTING TO BE SUPPLIED BY POST COLAISTE CHILLIAN PRIMARY SCHOOL. LIGHTING INDICATED ALONG MAIN CAMPUS ROAD AND PATHWAY ACCESS TO PE HALL

NOTE:
1. ALL PVC PIPES TO FALL AWAY FROM BUILDING AND ALL PITS SHOULD NOT WATERLOG.



SITE SERVICES DETAIL SHOWING SEPARATION DISTANCES

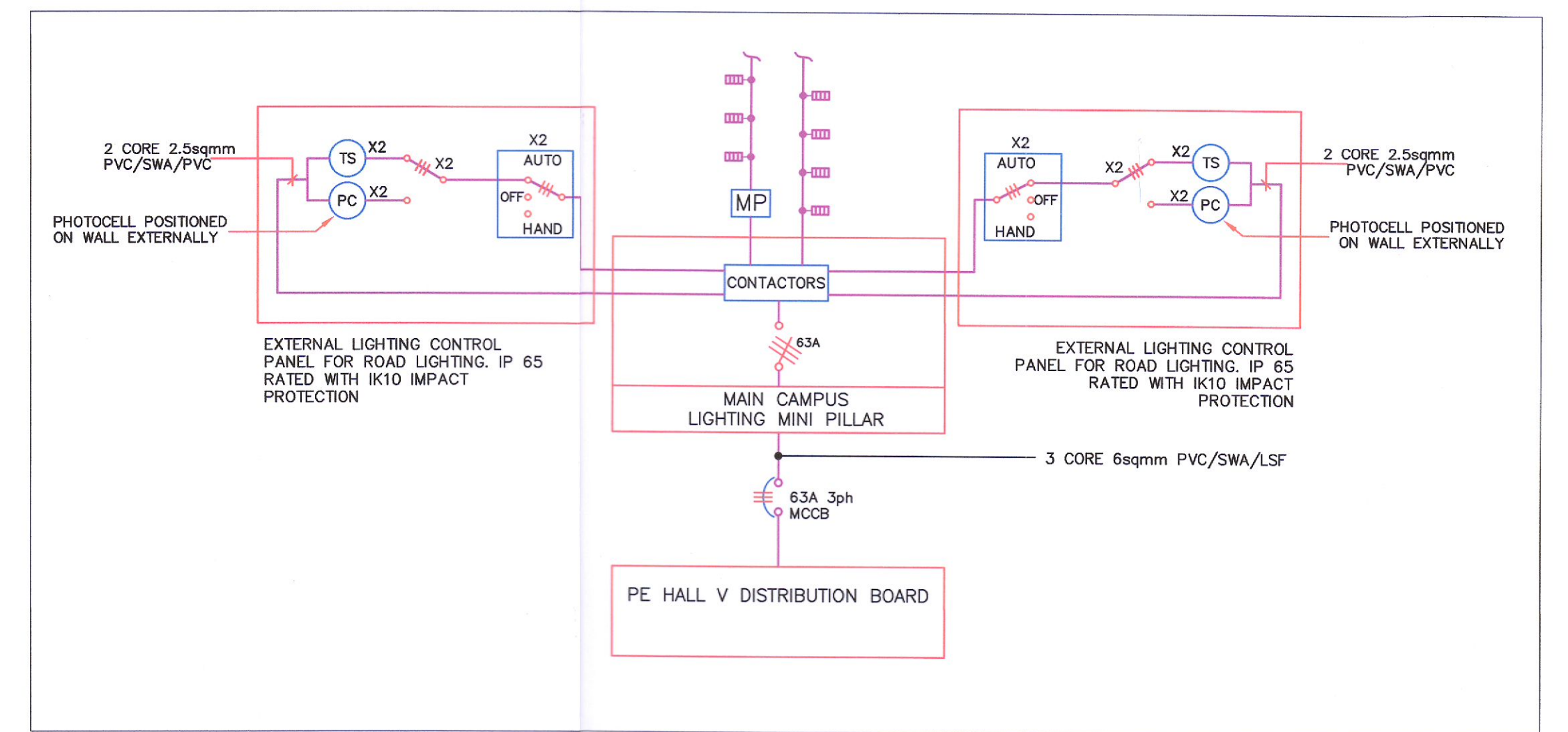
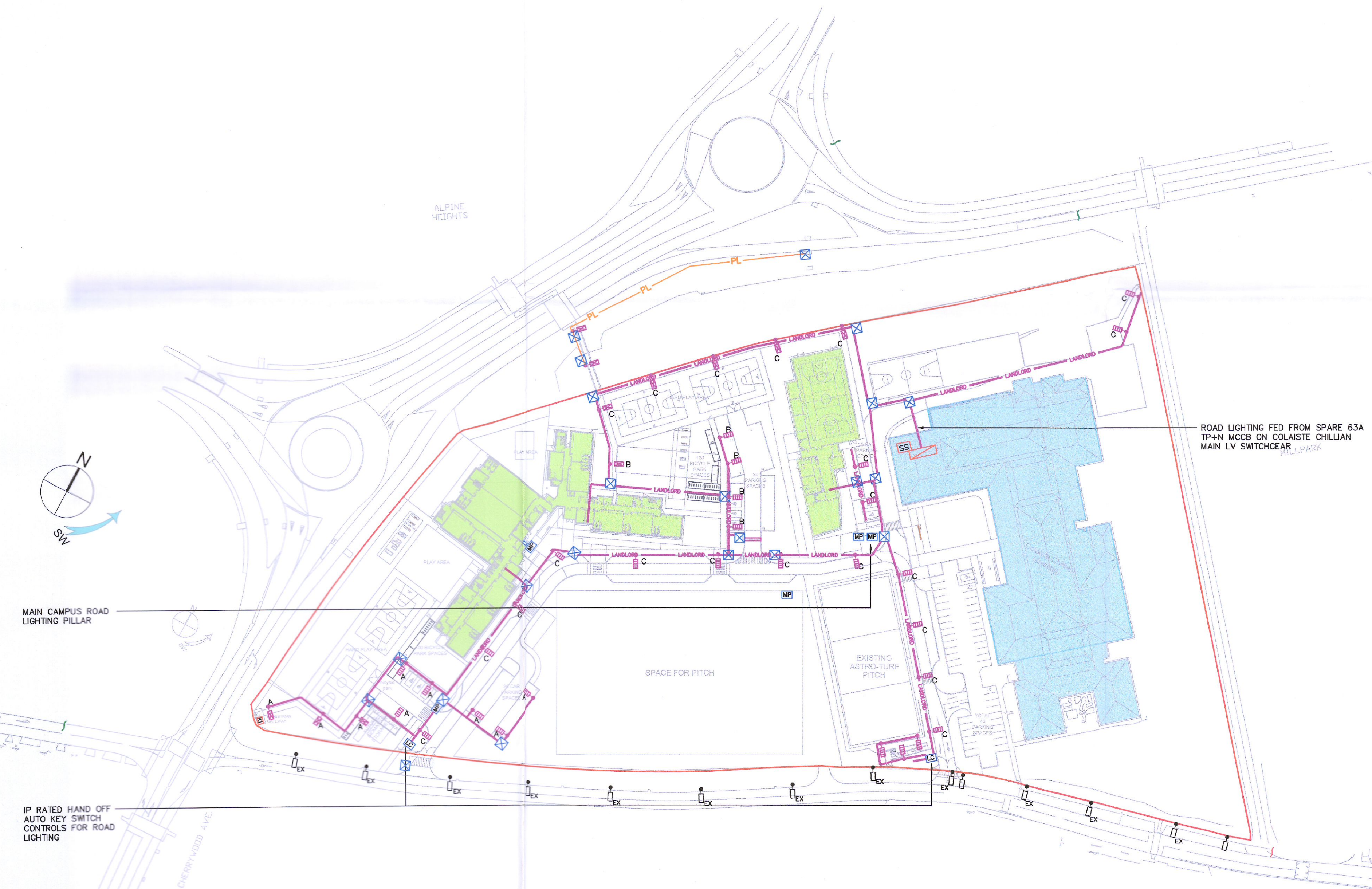


- Notes:
- Warning tape shall indicate the depth of pipe/cable below.
 - ESB by on site inspection to verify ducting arrangement and if ducts are to be encased in lean mix.
 - ESB approved marker tapes to be installed above ducts.
 - Gas pipe must be installed a minimum distance of 3.5m from any permanent or temporary building.
 - For information in relation to foul and surface water services please see BMCE drawing 14363-101 proposed foul and surface water layout

NOTES:

- TRENCH SIZES:
EIRCOM - 800MM DEEP X 600MM WIDE
ESB - 800MM DEEP X 600MM WIDE
SITE LTG - 800MM DEEP X 600MM WIDE
EIRCOM + ESB 800MM DEEP X 1100MM WIDE
EIRCOM + ESB + SITE LTG - 800MM DEEP X 1300MM WIDE
- CABLE SIZE FOR EXTERNAL LIGHTING:
3-CORE 6sqmm PVC/SWA/PVC.
- EXTERNAL ROAD LIGHTING TO BE FED FROM COLAISTE CHILLIAN
- EXTERNAL LIGHTING TO BE CONTROLLED VIA TIMECLOCK AND PHOTOCELL
- THE EXTERNAL LIGHTING IN THE SCHOOL GROUNDS SHALL OPERATE IN THE EVENT OF THE INTRUDER ALARM BEING ACTIVATED
- ALL CROSSOVERS OF ESN HT TRANSMISSION LINES TO BE WITNESSED BY ESN ENGINEERS. MAIN CONTRACTOR TO ALLOW FOR ATTENDANCE OF SAME.
- MAIN ROAD LIGHTING FED FROM PE HALL DISTRIBUTION BOARD CONTROLLED VIA TIME CLOCK PHOTOCELL & REMOTE HAND OFF AUTO SWITCH.
- CAR PARK LIGHTING FOR PRIMARY SCHOOLS TO BE FED FROM EACH RESPECTIVE PRIMARY SCHOOL.

- NEW BUILDING
- EXISTING BUILDING



General Notes

- DO NOT SCALE FROM THIS DRAWING. WORK ONLY FROM FIGURED DIMENSIONS.
- ALL ERRORS & OMISSIONS TO BE REPORTED TO THE CONSULTING ENGINEER
- THIS DRAWING TO BE READ IN CONJUNCTION WITH ALL OTHER SERVICES, ARCHITECTURAL, ENVIRONMENTAL & ALL OTHER RELEVANT DRAWINGS & SERVICES SPECIFICATIONS.

Rev	Date	Description	R.B.	D.E.
T1	31/05/21	ISSUE FOR TENDER		

Dublin
DUBLIN AND DÚN LAOGHAIRE
EDUCATION AND TRAINING BOARD
Project Title
GAELSCOIL na CAMOIGE agus GAELSCOIL CHLUAIN DOLCAIN

Drawing Title
PROPOSED CAMPUS LIGHTING POWER & CONTROL LAYOUT

ENGINEERS IRELAND IHEEM
Dublin 01 872300
Cork 021 575080
Roscommon 090 802380
Website www.Varming.ie

2016 Celebrating our 70th Year

Varming
Consulting Engineers
Dublin, Cork, Roscommon
varming@varming.ie

Revision	Drawing Reference	Date	Checked By	Drawn By	Scale
T1	15741-ME-1003	MARCH 16	P.H.	T.B.	1:1000 @A1