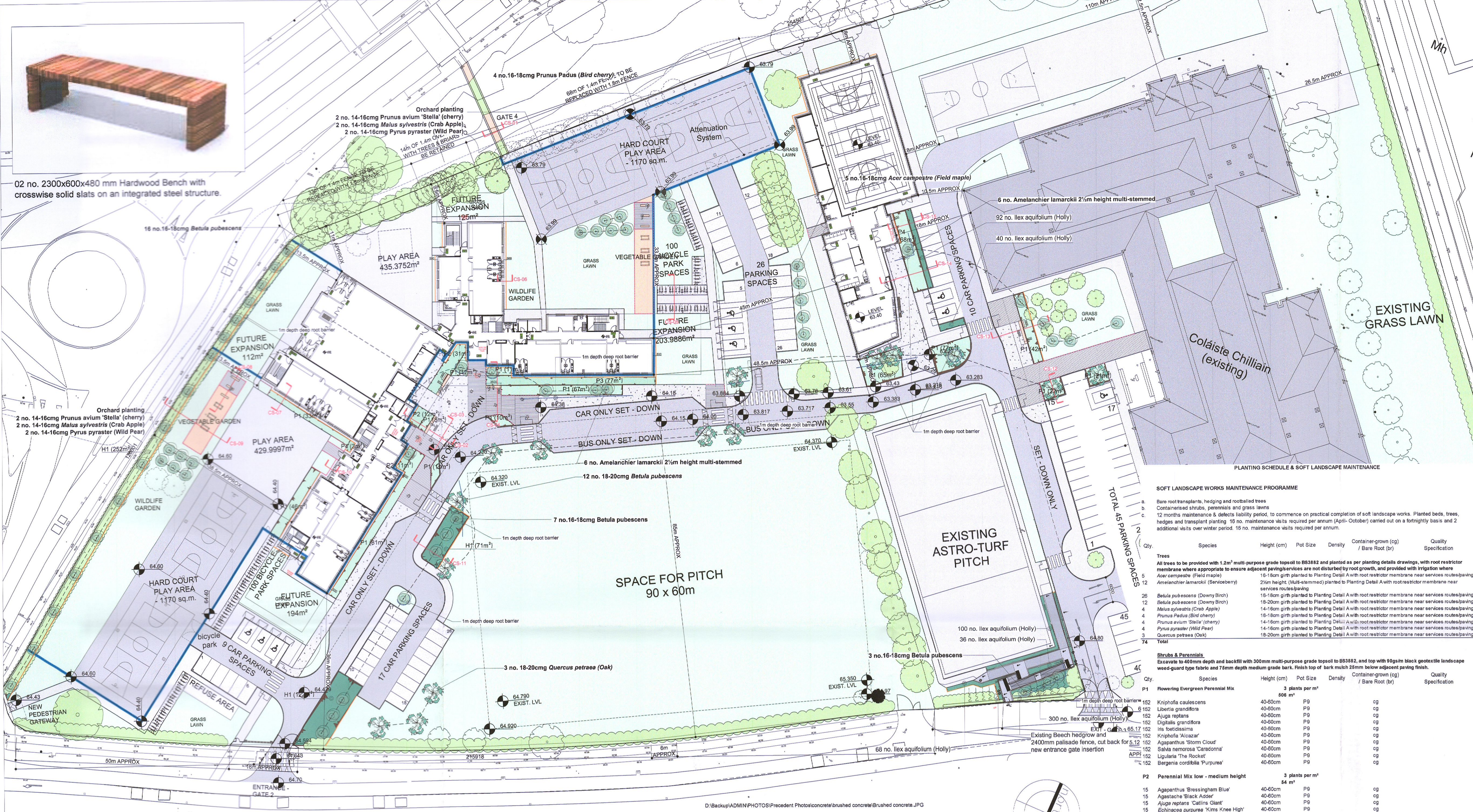


02 no. 2300x600x480 mm Hardwood Bench with crosswise solid slats on an integrated steel structure.



LANDSCAPE MASTER PLAN & PLANTING PLAN / scale 1:500

Rev	Date	Description	By
A	2017-09-05	Relocation of few trees to avoid services. Planting to ramp revised. Gravel infill to approx. 4-8mm diameter.	LP
B	2017-11-05	Site Plan amended according to Amendments to the Rear of the Proposed Sports Hall as requested by the Fire Officer relating to extended footpaths from rear escape doors	LP
C	2017-12-06	New section of path at the north of PE Hall. Continuation of building perimeter path to play area. A fixed seating bench on Access path to Sports Hall Entrance included. Continuation of concrete path at entrance to GP Room. 04no. trees relocated. Root barrier included. All revisions are highlighted by revision cloud.	LP
D	2017-12-22	All product names removed.	LP

This drawing is copyright. Figured dimensions to be used in all cases. All dimensions to be checked on site prior to commencement of works.

Code	Description
Q23/110A Q20/215 Q20/170A	<b>PAVING - GOLDEN HARD BINDING GRAVEL</b> • Hard-compacting gravel paving and sub-bases to be laid as permeable, and laid to max 1:50 falls towards adjacent shrub planting beds.
Q25/150A	<b>CONCRETE BLOCK PAVING SYSTEM</b> • 600mm x 150mm x 80mm depth natural granite aggregate paving unit, in Graphite finish on bedding & sub-base to engineer's design detail and specification, laid in a staggered bond laying pattern. • Klinker-Jointing Sand in Silver Granite. • Paving Sealer for a 'Wet Look' finish.
Q21/115A Q20/210 Q20/170A	<b>PAVING - IN-SITU CONCRETE, EXPOSED AGGREGATE FINISH</b> • 210mm depth in-situ concrete paving laid to max. 1:50 cross-falls and treated with an exposed aggregate retarder to provide a more attractive surfacing treatment; saw-cut joints at 3m centres. • Concrete to be a designed mix with a high amount of rounded aggregates.
Q21/215B Q20/210 Q20/170A	<b>PAVING - IN-SITU CONCRETE, BRUSHED FINISH</b> • 210mm depth in-situ concrete paving laid to max 1:50 cross-falls on 50mm depth sand bedding course • sub-base and geotextile to engineer's design detail and specification • applied brushed finish to create slip resistance; saw-cut joints at 3m centres. • to incorporate kerb edging adjacent to vehicular road to engineer's detail
Q31/505 Q31/500 Q31/485 Q31/385 Q28/315	<b>SEMI-MATURE NATIVE TREES</b> • Semi-mature native species provided with 1200mm <sup>2</sup> multi-purpose grade topsoil to BS: 3882, topped with black 90gsm <sup>2</sup> landscape fabric secured with plastic pags at 300mm c/c's & 75mm depth medium-grade bark mulch. • Trees double-staked & supplied with planting accessories, and provided with root restrictors within 2m of paving, underground services and foundations.
Q31/200 Q31/485 Q31/385 Q28/315	<b>PLANTING - PERENNIALS</b> • Ornamental perennial planting to comprise ornamental grasses & flowering perennials to soften the visual impact of the development. • Planting to 300mm depth BS3882 multi-purpose topsoil on free-draining sub-base, topped with 90gsm <sup>2</sup> black landscape fabric and 75mm depth medium-grade pine bark mulch.
Q31/200 Q31/485 Q31/385 Q28/315	<b>PLANTING - HEDGEROWS:</b> • Native & naturalised hedgerow species to provide biodiversity, support for wildlife & screening as they mature. • Transplant planting to 300mm depth BS3882 multi-purpose topsoil on free-draining sub-base, topped with 90gsm <sup>2</sup> black landscape fabric and 75mm depth medium-grade pine bark mulch.
Q30/310 Q28/315	<b>SEEDING/TURFING: GRASS LAWNS</b> • Excavate lawn areas to 150mm depth & break up base of area to ensure free drainage. • Backfill with min. 150mm depth multi-purpose grade topsoil to BS3882 to lawn area and seed with low maintenance hard-wearing non-ryegrass amenity grass seed mix at 25g per m <sup>2</sup> , suitable for area.
Q50/220A	<b>STREET FURNITURE - WOODEN SEATING</b> • Iroko seat units • Base slats bolted to concrete bases 100 mm below paving surface.
Q50/220B	<b>STREET FURNITURE - RAISED PLANTER</b> • 200x200x100 planed smooth 'Grade A' green oak sleepers (cut to lengths as required) to 500mm height off FFL to provide seating elements to detail. • Top sleeper to be plugged with 18mm <sup>2</sup> green oak plug. Sleepers slotted down over 18/20mm Ø rebar at 1m centres element fixed into C20/P concrete foundation to engineer's design detail and specification. • Backfill raised planters with min. 300mm depth BS-3882 multi-purpose grade topsoil.
Q50/220C	<b>STREET FURNITURE - HARDWOOD BENCH</b> • Strong and rigid Hardwood Bench to comprise sturdy, crosswise-positioned solid slats (7x7cm) mounted in comb system, on an integrated galvanised mild steel structure powder-coated to RAL 7016. Please refer to image for reference. • 02 no. 2300x600x480 mm (LxWxH)
Q23/170A	<b>GRAVEL TRIM TO BASE OF BUILDING</b> • Approx. 4-8mm diameter, 100mm depth loose gravel overlay to base of building elevation interface with soft landscape.
Q10/114A	<b>ALUMINIUM TRIM</b> • L-shaped 102x76x2440 mill finish aluminium decorative edging trim, fixed with concrete nails at 250mm centres, into continuous C20/P 200x300mm concrete foundation, and secured by min. 50mm depth increasing to 70 mm continuous C20/P concrete as per detail.
Q10/114B	<b>EDGING TRIM - PRESSURE-TREATED TIMBER</b> • 50x150mm planed pressure-treated larch timber edge laid in minimum 2m lengths and screw-fixed to posts at 1m c/c's. • 50x50x610mm pressure-treated larch posts located at 1m c/c's (3 no. per 2mtrs length) • Posts to be finished with a 25mm bevelled top. 2 no. 80mm galvanised screws per post.
Q10/114C	<b>CONCRETE EDGING TO LIGHTWEIGHT PATH SYSTEM</b> • In situ exposed aggregate concrete edging on geotextile to achieve an exposed aggregate finish to BS EN 206BS-8500 tolerances.
	<b>KERB</b> • Kerb to engineer's design, detail and specification
	<b>TREE ROOT BARRIER</b> • 1m depth deep root barrier to trees within 6m of distance from services. • Quantity: 153 m length in total.

**SOFT LANDSCAPE WORKS MAINTENANCE PROGRAMME**

- Bare root transplants, hedging and roccolled trees
- Containerised shrubs, perennials and grass lawns
- 12 months maintenance & defects liability period, to commence on practical completion of soft landscape works. Planted beds, trees, hedges and transplant planting 16 no. maintenance visits required per annum (April-October) carried out on a fortnightly basis and 2 additional visits over winter period. 16 no. maintenance visits required per annum.

Qty	Species	Height (cm)	Pot Size	Density	Container-grown (cg) / Bare Root (br)	Quality Specification
1	Acer campestre (Field maple)	22m	18m	1	cg	18-18cm girth planted to Planting Detail A with root restrictor membrane near services routes/paving services routes/paving
5	Amelanchier lamarckii (Serviceberry)	22m	18m	1	cg	22m height (Multi-stemmed) planted to Planting Detail A with root restrictor membrane near services routes/paving
26	Betula pubescens (Downy Birch)	15-18m	12m	2	cg	15-18cm girth planted to Planting Detail A with root restrictor membrane near services routes/paving
12	Betula pubescens (Downy Birch)	18-20m	12m	1	cg	18-20cm girth planted to Planting Detail A with root restrictor membrane near services routes/paving
4	Malus sylvestris (Crab Apple)	14-16m	12m	1	cg	14-16m girth planted to Planting Detail A with root restrictor membrane near services routes/paving
4	Prunus Padus (Bird cherry)	15-18m	12m	1	cg	15-18cm girth planted to Planting Detail A with root restrictor membrane near services routes/paving
4	Prunus avium 'Stella' (cherry)	14-16m	12m	1	cg	14-16m girth planted to Planting Detail A with root restrictor membrane near services routes/paving
3	Quercus petraea (Oak)	14-16m	12m	1	cg	14-16m girth planted to Planting Detail A with root restrictor membrane near services routes/paving
74	Total					

**Strubs & Perennials**

Excavate to 400mm depth and backfill with 300mm multi-purpose grade topsoil to BS3882, and top with 90gsm<sup>2</sup> black geotextile landscape weed-guard type fabric and 75mm depth medium grade bark. Finish top of bark mulch 25mm below adjacent paving finish.

Qty	Species	Height (cm)	Pot Size	Density	Container-grown (cg) / Bare Root (br)	Quality Specification
1	Flowering Evergreen Perennial Mix			3 plants per m <sup>2</sup>	84 m <sup>2</sup>	
152	Kniphofia caulescens	40-60cm	P9	cg		
152	Lobelia grandiflora	40-60cm	P9	cg		
152	Aguga reptans	40-60cm	P9	cg		
152	Digitalis grandiflora	40-60cm	P9	cg		
152	Iris sibirica	40-60cm	P9	cg		
152	Kniphofia 'Alcazar'	40-60cm	P9	cg		
152	Agapanthus Storm Cloud	40-60cm	P9	cg		
152	Silvia nepalensis 'Clarendon'	40-60cm	P9	cg		
152	Ligularia 'The Rocket'	40-60cm	P9	cg		
152	Bergenia cordifolia 'Purpurea'	40-60cm	P9	cg		

**Perennial Mix low - medium height**

Qty	Species	Height (cm)	Pot Size	Density	Container-grown (cg) / Bare Root (br)	Quality Specification
15	Agapanthus 'Bressingham Blue'	40-60cm	P9	cg		
15	Agapanthus 'Black Aster'	40-60cm	P9	cg		
15	Aguga reptans 'Cathine Giant'	40-60cm	P9	cg		
15	Echinacea purpurea 'Kims Knee High'	40-60cm	P9	cg		
15	Echinops 'Tipton Blue'	40-60cm	P9	cg		
15	Helianthus autumnalis 'Moerheim Beauty'	40-60cm	P9	cg		
15	Kniphofia 'Intrigue'	40-60cm	P9	cg		
15	Verbena bonariensis	40-60cm	P9	cg		
15	Aspera x fessendenii 'Six Hills Giant'	40-60cm	P9	cg		
15	Rubus 'Goldsturm'	40-60cm	P9	cg		
15	Sedum x telephium 'Autumn Joy'	40-60cm	P9	cg		

**Perennial Mix medium to tall**

Qty	Species	Height (cm)	Pot Size	Density	Container-grown (cg) / Bare Root (br)	Quality Specification
15	Alcea rosea 'Hollyhock'	40-60cm	P9	cg		
23	Echinops 'Tipton Blue'	40-60cm	P9	cg		
23	Eupatorium purpureum 'Atropurpureum'	40-60cm	P9	cg		
23	Ligularia 'The Rocket'	40-60cm	P9	cg		
23	Morita caerulea 'Transparent'	40-60cm	P9	cg		
23	Rubus 'Goldsturm'	40-60cm	P9	cg		
23	Silene aconitifolia	40-60cm	P9	cg		
23	Verbascum bombycinum	40-60cm	P9	cg		
23	Verbascum 'Gainsborough'	40-60cm	P9	cg		
23	Verbena bonariensis	40-60cm	P9	cg		

**Shade Tolerant Perennial Mix**

Qty	Species	Height (cm)	Pot Size	Density	Container-grown (cg) / Bare Root (br)	Quality Specification
36	Astilbe chinensis	40-60cm	P9	cg		
36	Blechnum spicant	40-60cm	P9	cg		
36	Digitalis grandiflora	40-60cm	P9	cg		
36	Iris sibirica	40-60cm	P9	cg		
36	Phyllitis (Asplenium) scolopendrium	40-60cm	P9	cg		
36	Phytolacca acutatum	40-60cm	P9	cg		

**Transplants, Hedging & Understorey Planting**

Excavate proposed screening mix shrub planting areas to 400mm depth and break up base of planter to ensure free drainage. Backfill with min. 300mm depth topsoil to BS3882 to Planting Details drawing and top with black weed-guard type landscape fabric 90gsm<sup>2</sup> and 75mm depth medium-grade bark mulch topping. Finish top of bark mulch 25mm below adjacent paving finish.

**SOFT LANDSCAPE WORKS PROGRAMME**

- Bare root transplants, hedging and roccolled trees
- Containerised shrubs, perennials and grass lawns
- 12 months maintenance & defects liability period, to commence on practical completion of soft landscape works. Lawn cutting 14 cuts per growing season (April-October) carried out on a fortnightly basis and 2 additional cuts over winter period. 16 cuts in total. 16 no. maintenance visits required.
- 12 months maintenance & defects liability period to planted beds, trees, hedges and transplant planting to be carried out at the same time as grass cutting. 16 no. maintenance visits required.

November - March  
Before main contract practical completion



Acer campestre (Field Maple) Amelanchier lamarckii (Serviceberry) Betula pubescens (Downy Birch) Exposed aggregate concrete paving



Brushed concrete paving Natural granite aggregate paving, graphite finish. 600mm x 150mm x 80mm depth. Exposed aggregate concrete paving

**STEPHEN DIAMOND ASSOCIATES**  
CHARTERED LANDSCAPE ARCHITECTS

68 Pearse Street Dublin 2 tel: 01 6775670  
email: mail@sda.ie fax: 01 6775669

Client Department of Education and Skills

Project Clondalkin Adapt 18  
Title Landscape Master Plan & Planting Plan  
Drg No 16-444-TD-01 Date Issued 2018-02-15 Scale 1:500 @ A1  
Drawn LP Purpose Tender Checked SD