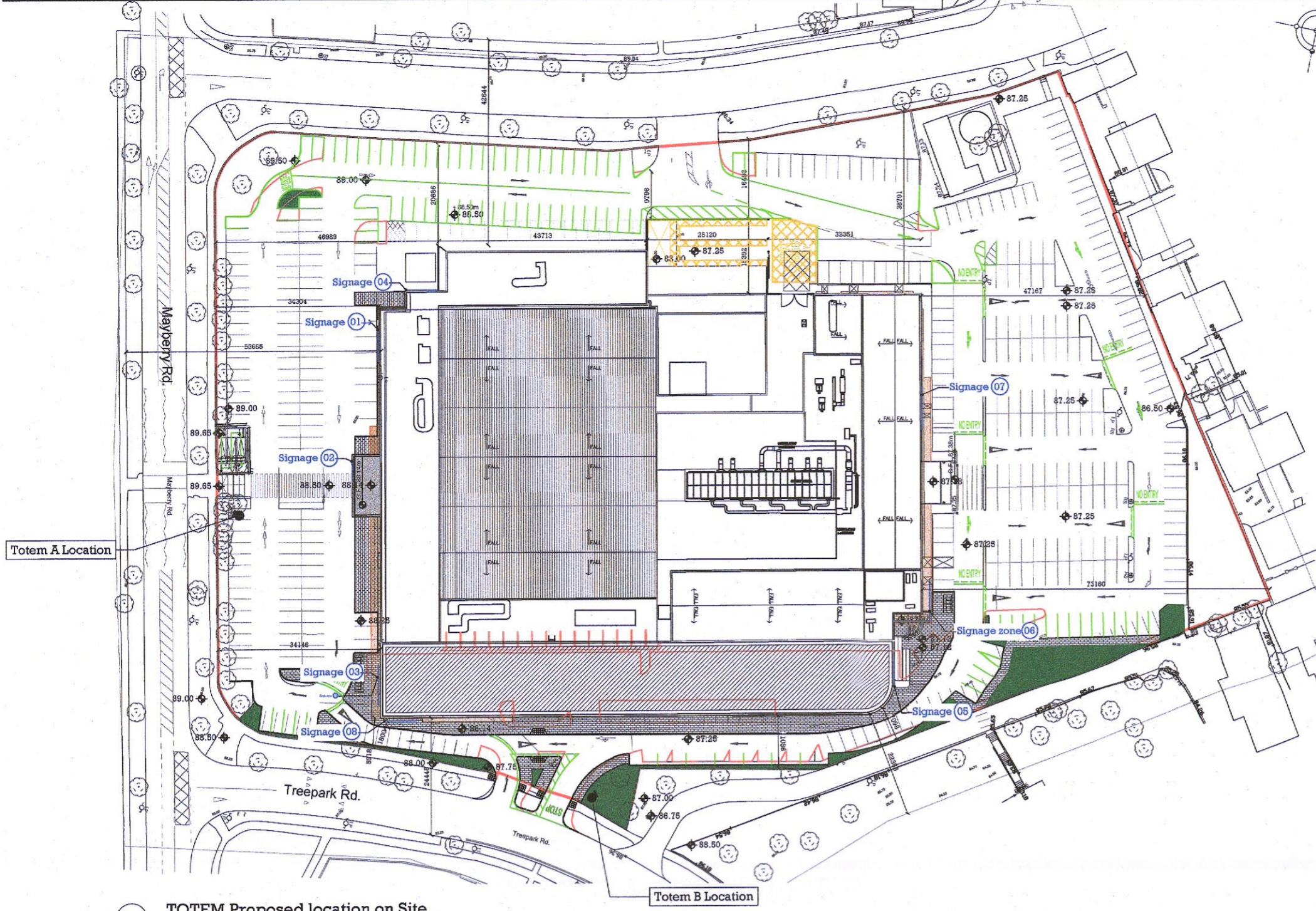
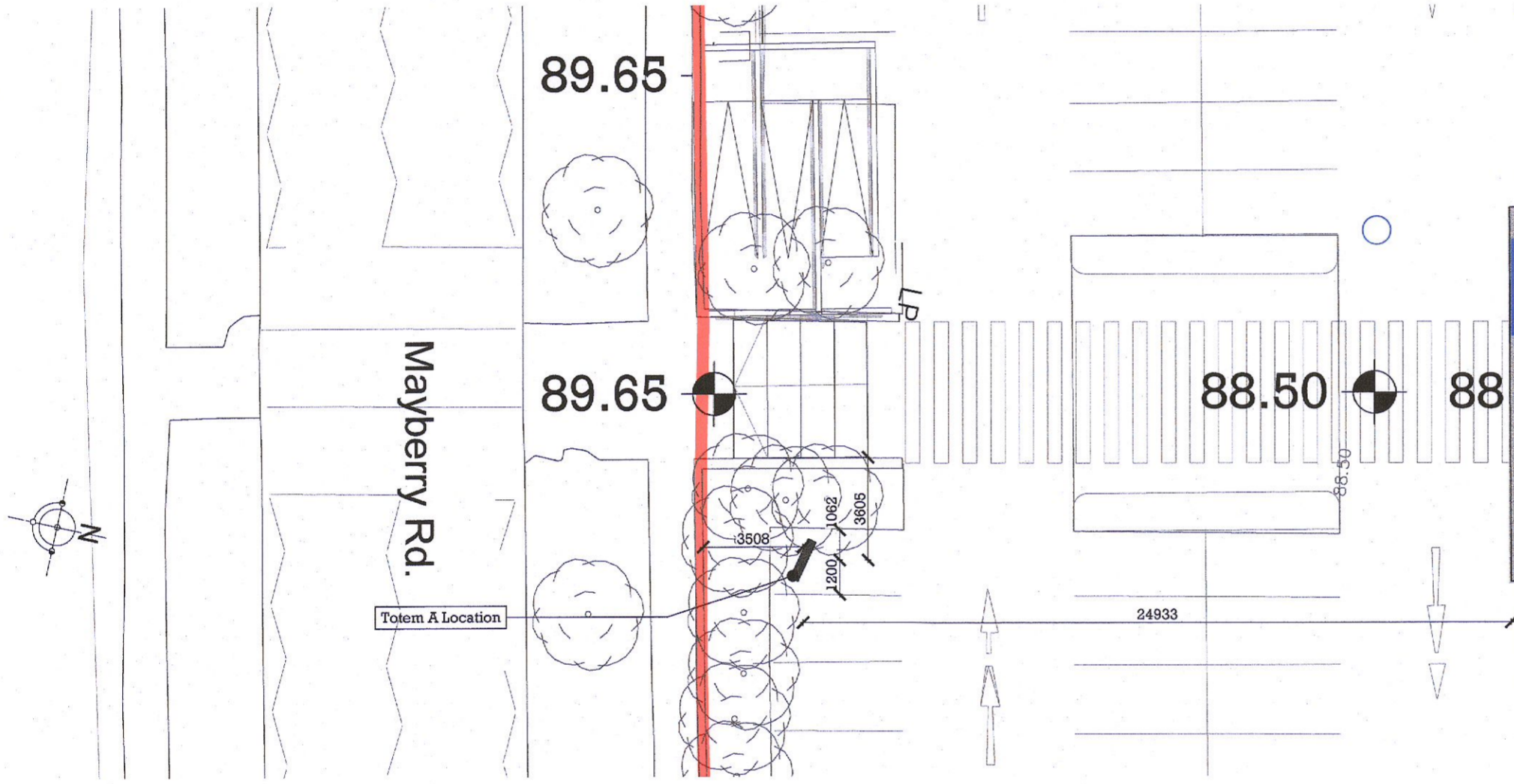


**Illuminated Car Park / Entrance Totem**  
**Black and White Aluminium Outer Panel Covers**  
**Illuminated Dunnes Stores and Store Location Name**  
**High Tac White reflective Vinyl Shop & Store Amenities Lettering**

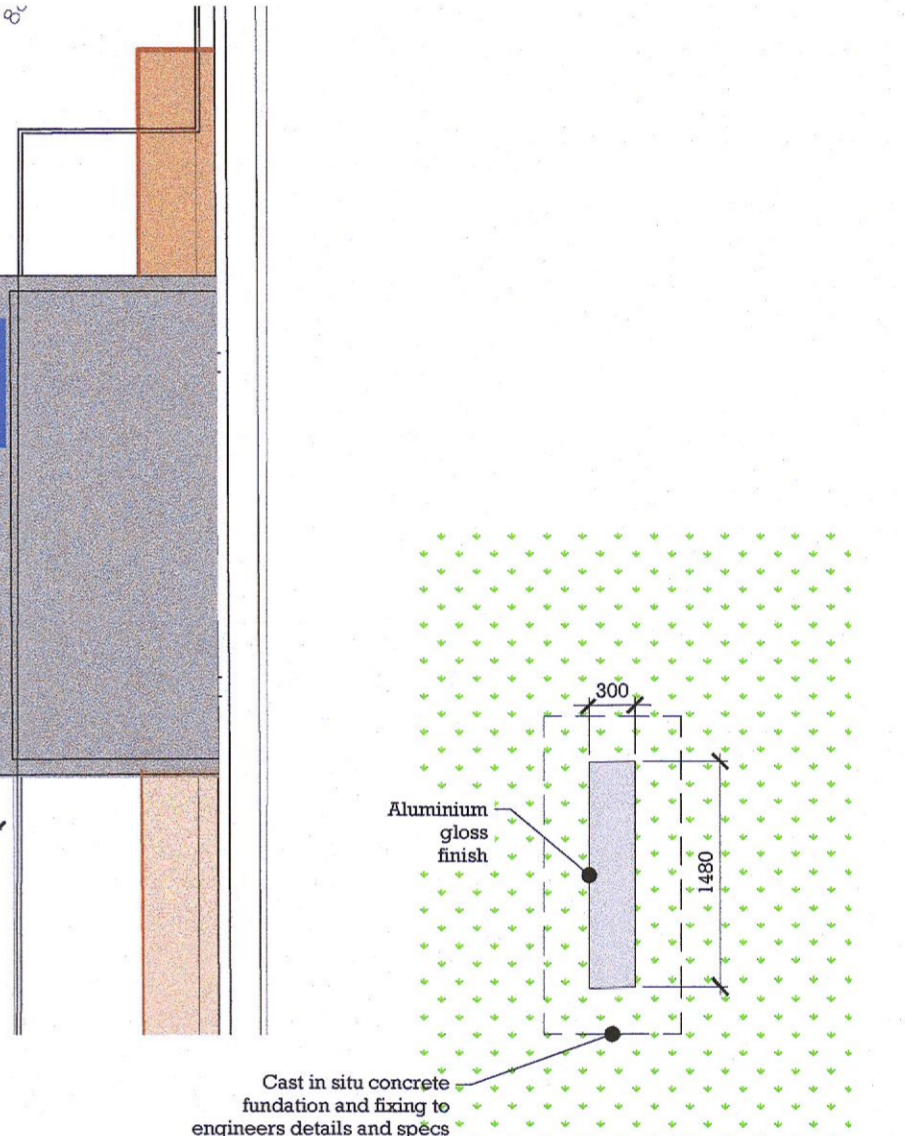
- Primary external usage for Illuminated Car Park Totem:
- "DUNNES" lettering to have fret cut letters with Day / Night Acrylic (SA 9T25) reverse rebated and push through to sit flush with outer face of aluminium panel.
- "STORE" lettering to have fret cut letters with 85014 Acrylic reverse rebated and push through to sit flush with outer face of aluminium panel.
- Fret cut letters to be internally illuminated 'white' behind the acrylic face.
- Aluminium panels should be 30% gloss white and 30% gloss black as shown (see DUNNES STORES technical drawings for detail).
- White LED modules mounted direct to inner tray panel to rear of illuminated fret cut letters.
- Aluminium cover panels to be mechanically fixed to inner steel frame structure.  
 Shop / Store amenities panels to receive white reflective high tac vinyl lettering applied direct to face.
- All wiring to be run within aluminium panels / inner frame and not be visible. Backlit acrylic letter faces should be evenly lit with no shadows or spotting from LED modules.  
 Uplighters should be fitted around the base of the totem to illuminate the shop / store amenities lettering.
- Daytime face colour : Black
- Night time face colour : Illuminated White
- Totem Size : 4000mm High x 1480mm wide, 300mm Depth
- Primary usage : Car Park & Site entrance, mechanically mounted to suitable concrete foundation.
- Totem construction, foundation and fixing detail to be reviewed and signed by structural engineer on a site by site basis.



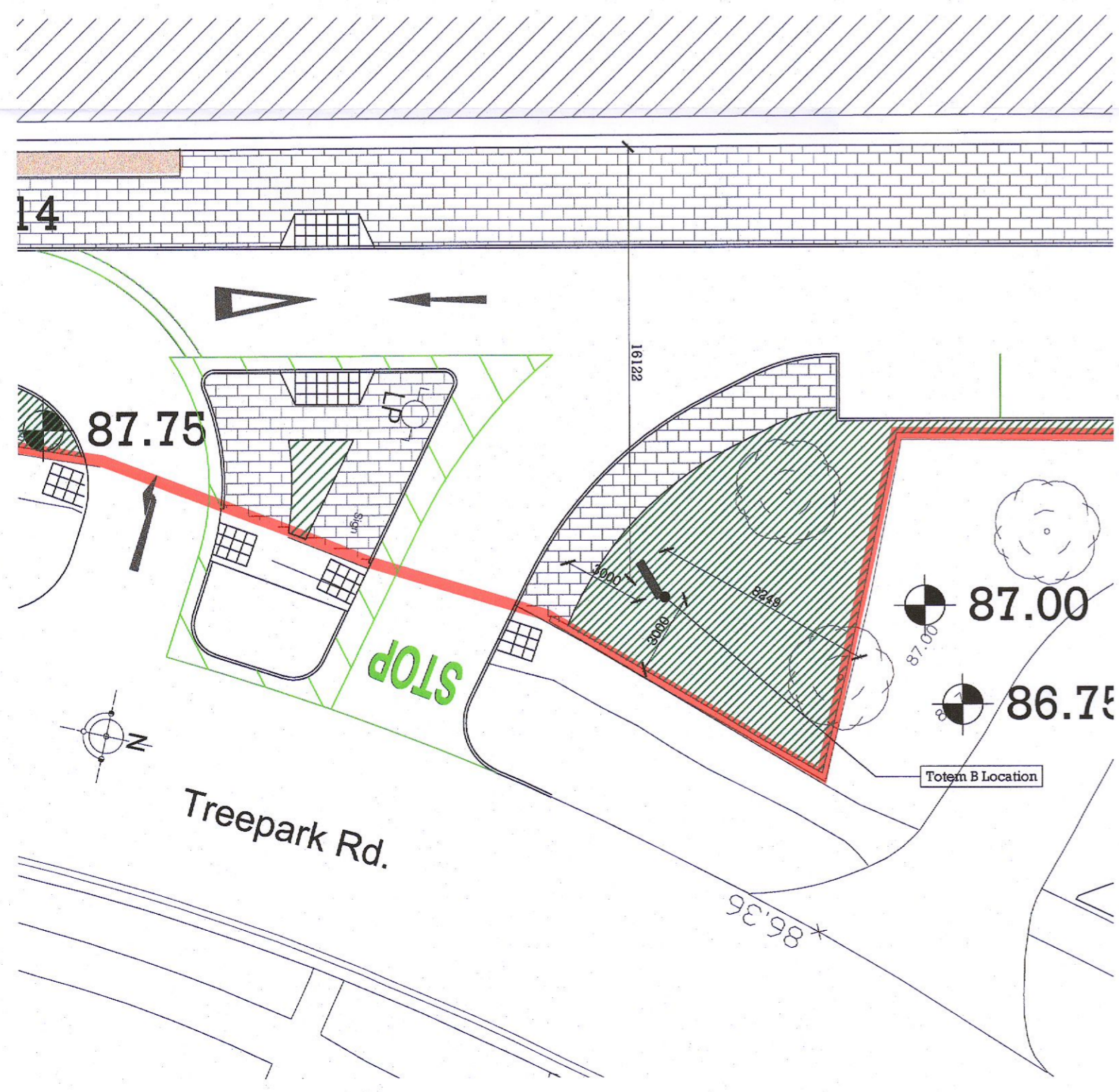
TOTEM Proposed location on Site  
 SCALE: 1:1000



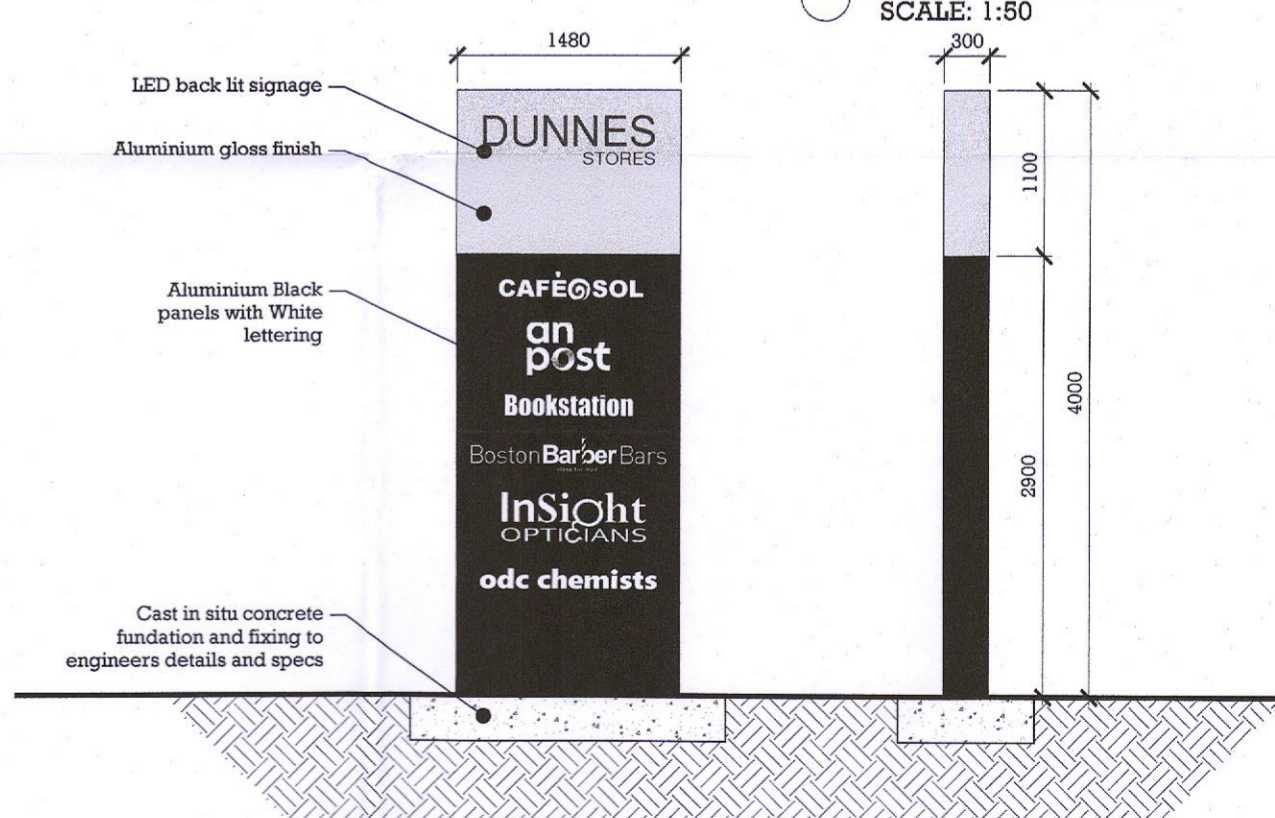
TOTEM A Proposed location at Entrance  
 SCALE: 1:200



TYPICAL TOTEM PLAN  
 SCALE: 1:50



TOTEM B Proposed location at Entrance  
 SCALE: 1:200



TYPICAL TOTEM ELEVATIONS  
 SCALE: 1:50

**PLANNING**

A	22/07/2022	Parking layout updated	MANUEL L. ENNIS
REV	DATE	DESCRIPTION	DRAWN

**Project Design Architects**  
 Unit 1 Beech Court Business Park, Kilcoole, Co. Wicklow  
 Tel: 01-6572973 info@projectdesignarchitects.com

Client	DUNNES STORES
Project	Kilnamanagh
Title	Totems as proposed
Date	23/03/2022
Drawn	Manuel L. Ennis
Scale	1:50 @ A2

**DS-69-PL-017A**