

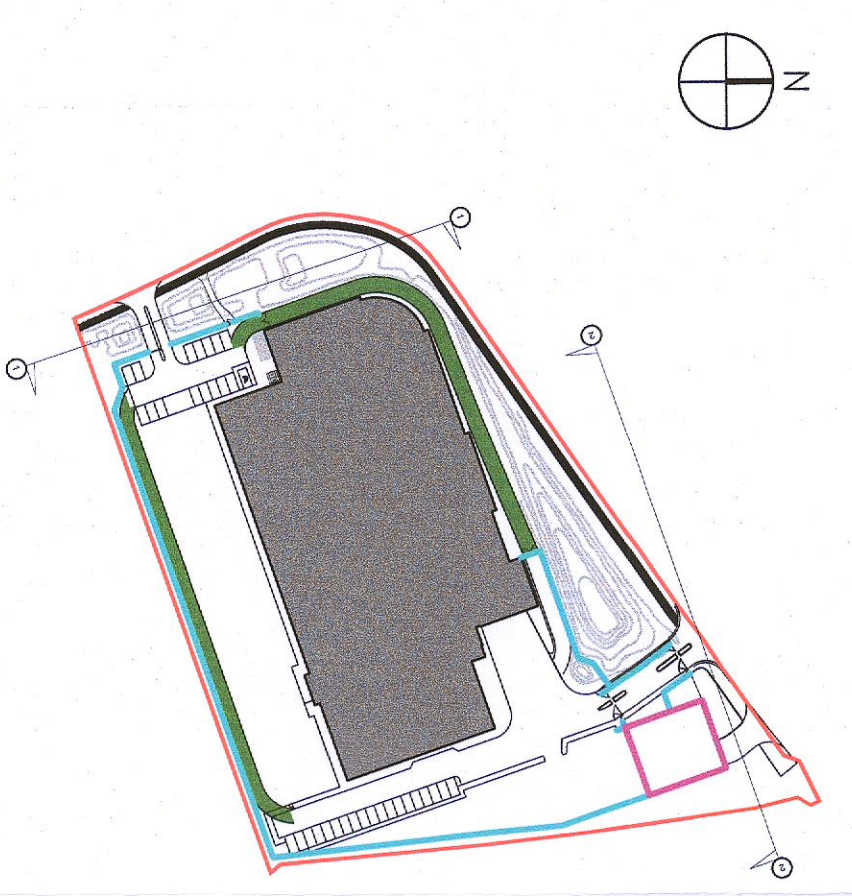
All information to be contained on this drawing shall be based on the information provided to the architect. This information shall be verified by the architect. This information shall be verified by the architect. This information shall be verified by the architect.

PALEADE FENCE 2.4m HIGH
 PALEADE FENCE 2.4m HIGH

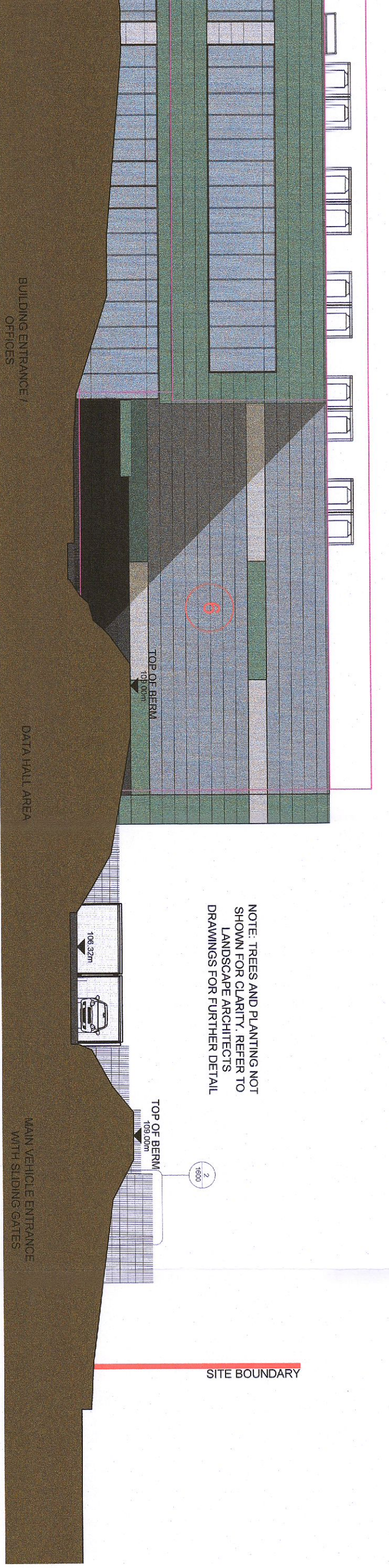
13

OPERATIONS FROM PERMITTED TO PROPOSED:

1. Data hall first floor removed, replaced with screen external plant space.
2. Internal layout revised.
3. Step out at south facade to accommodate stair core.
4. Building floor levels adjusted, with parapet level maintained.
5. East parapet height reduced.
6. Slot windows in Data Hall facade enhanced to match with feature colour to building.
7. Generator enclosure connected to building.
8. Generator flue height revised & number of generators reduced.
9. ESB 38kV sub station and customer Substation added.
10. Sprinkler, pump room and 10kV/400 station removed.
11. Car parking revised to allow for 35 car parking spaces, with future spaces removed.
12. Landscaping revised to North-East corner, to accommodate ESB sub station.
13. Boundary treatment revised to allow for 2.4m Palisade fence around ESB sub station, in accordance with ESBN requirements.
14. Canopy proposed over loading bay.

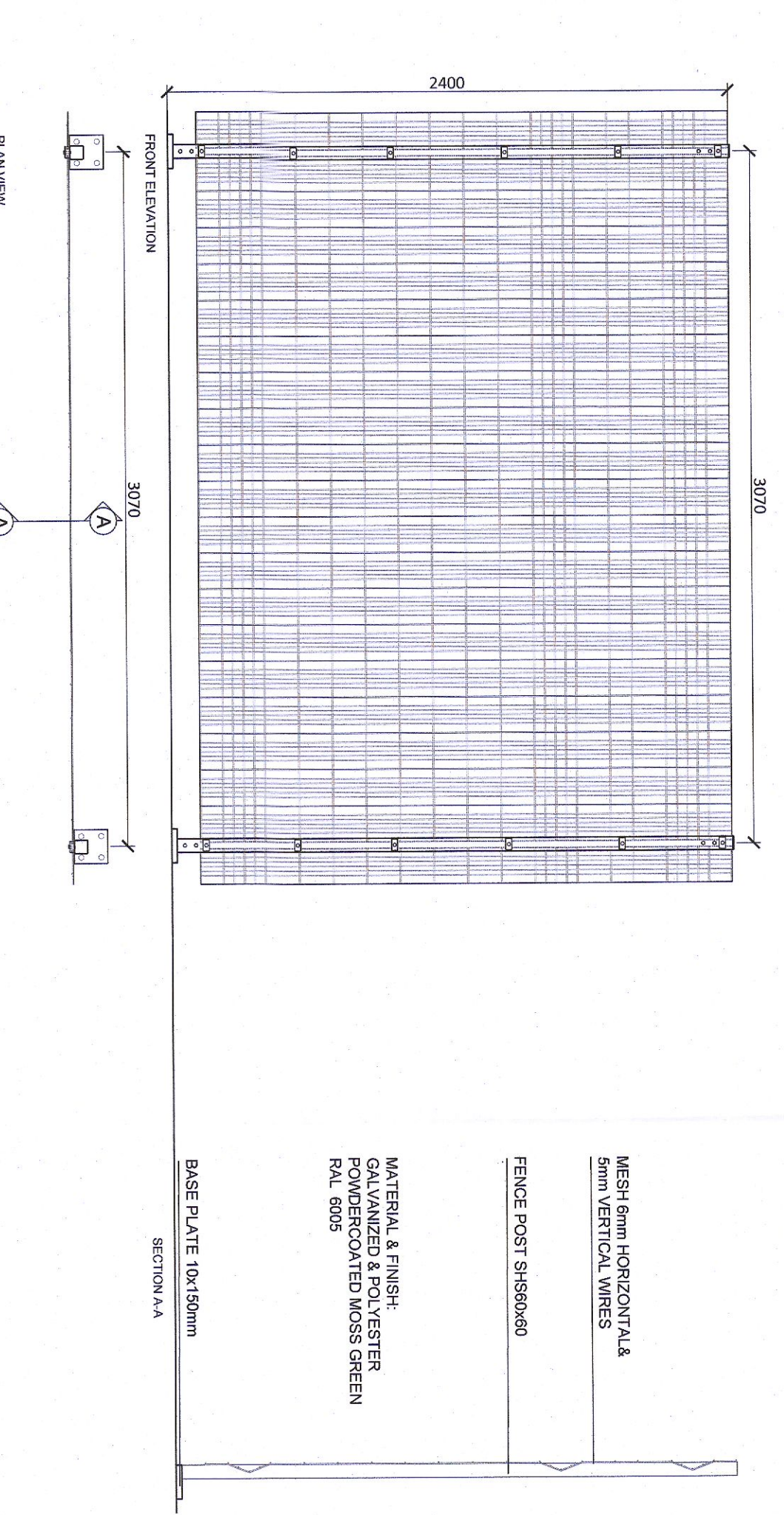


5 KEY PLAN - FENCE LOCATION
 A1809 SCALE: 1:200@A1



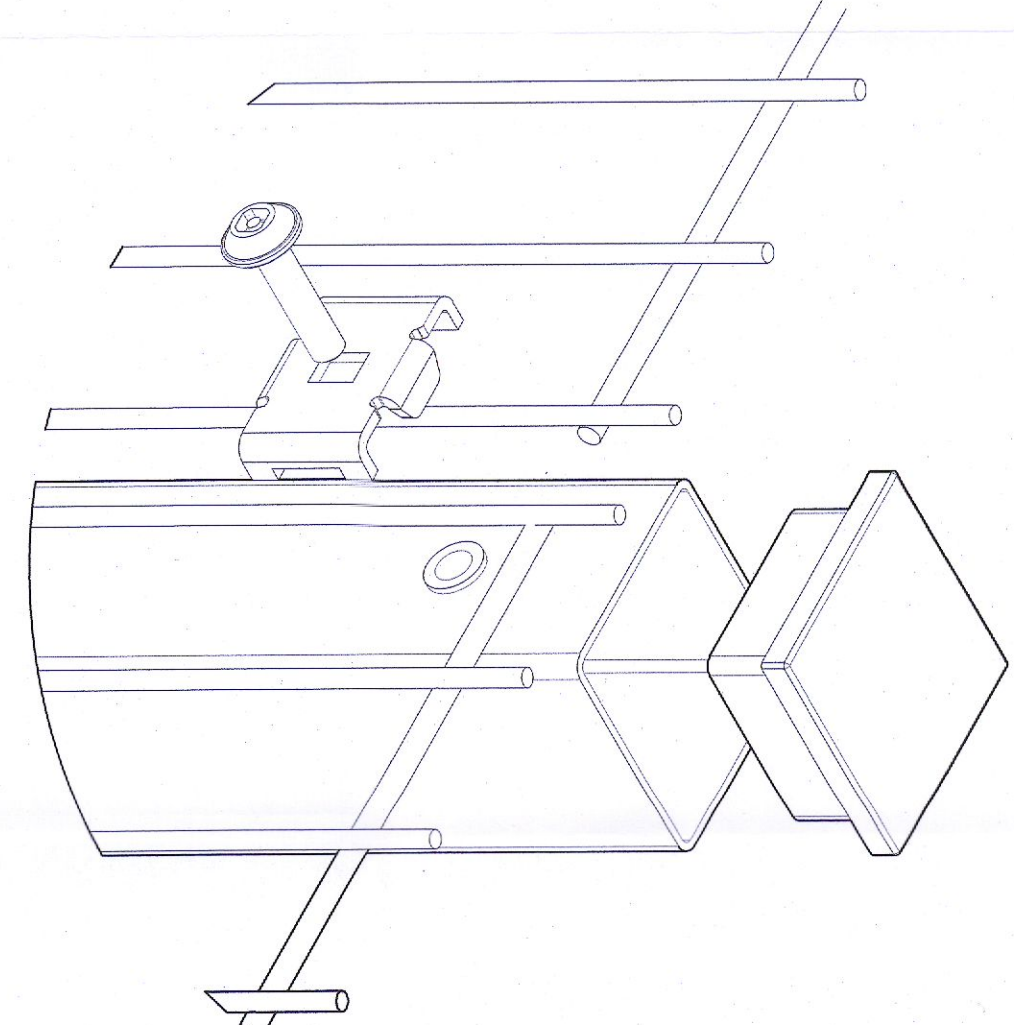
1 BOUNDARY SEGMENT 1-1
 A1809 SCALE: 1:200@A1

NOTE: TREES AND PLANTING NOT SHOWN FOR CLARITY. REFER TO LANDSCAPE ARCHITECTS DRAWINGS FOR FURTHER DETAIL.

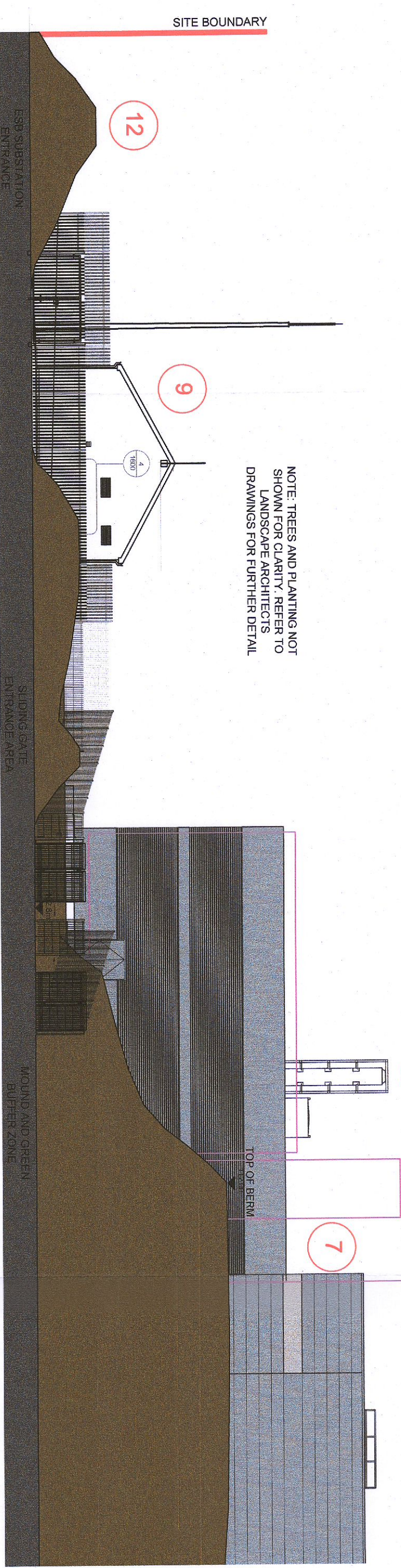


2 PALISADE FENCE 2.4m HIGH
 A1809 SCALE: 1:200@A1

MESH 6mm HORIZONTAL & 5mm VERTICAL WIRES
 FENCE POST S180x60
 MATERIAL & FINISH: GALVANIZED & POLYESTER POWDERCOATED MOSS GREEN RAL 6005
 BASE PLATE 10x150mm

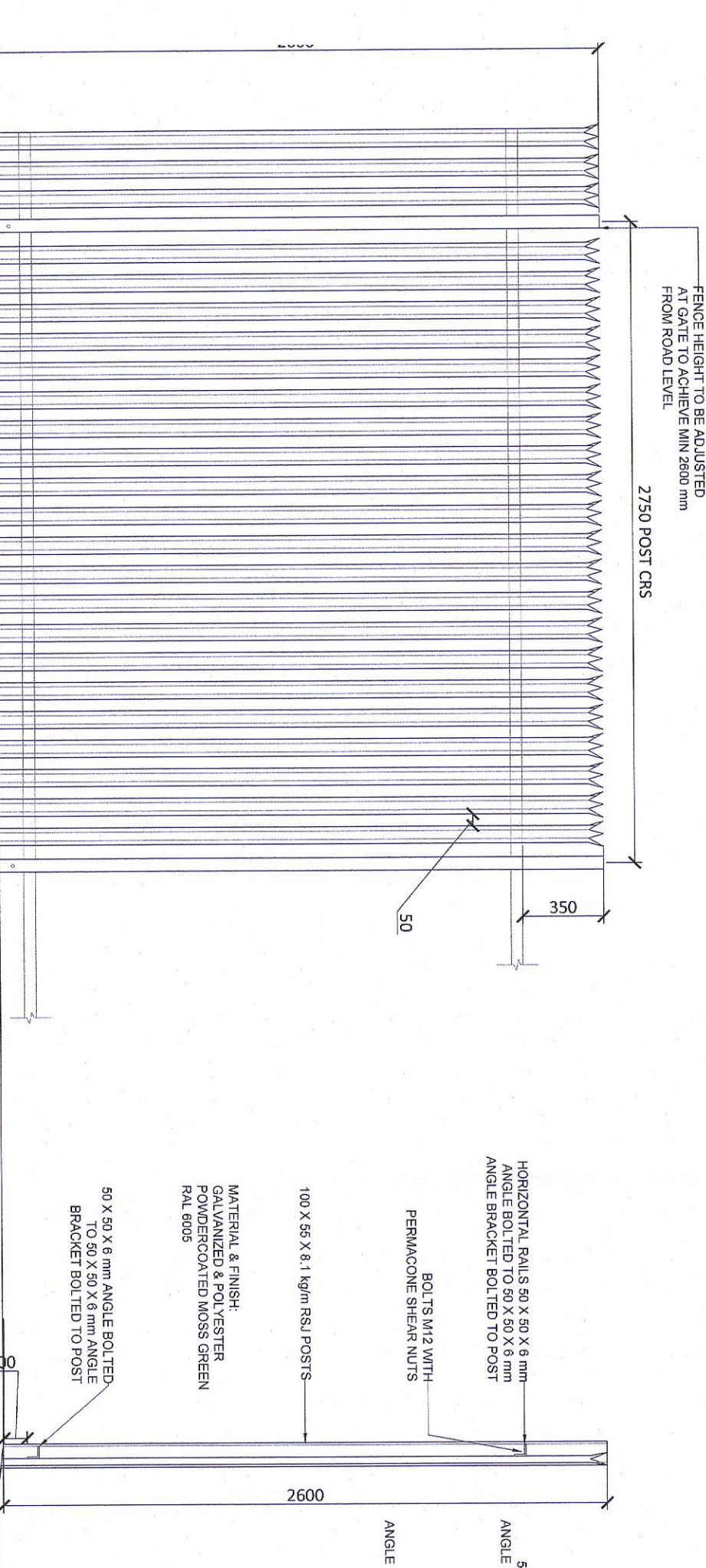


8



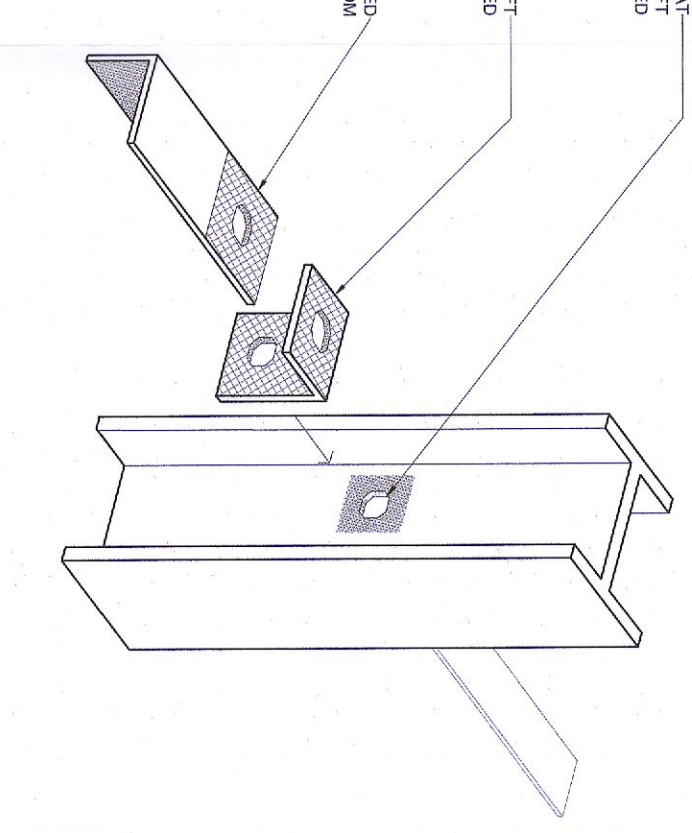
3 BOUNDARY SEGMENT 2-2
 A1809 SCALE: 1:200@A1

NOTE: TREES AND PLANTING NOT SHOWN FOR CLARITY. REFER TO LANDSCAPE ARCHITECTS DRAWINGS FOR FURTHER DETAIL.



4 PALISADE FENCE 2.4m HIGH
 A1809 SCALE: 1:200@A1

HORIZONTAL RAILS 50 X 50 X 6mm ANGLE BRACKET BOLTED TO POST
 PERMANENT SWIRL NUTS
 BOLTS MIX WITH PERMANENT SWIRL NUTS
 100 X 50 X 1.1mm RSL POSTS
 MATERIAL & FINISH: GALVANIZED & POLYESTER POWDERCOATED MOSS GREEN RAL 6005
 50 X 50 X 6mm ANGLE BOLTER TO 90 X 50 X 6mm ANGLE BRACKET BOLTED TO POSTS



9

REV	DATE	BY	CHK	DESCRIPTION
P1	18/07/22	DM	RCD	DH

REV	DATE	BY	CHK	DESCRIPTION
P1	18/07/22	DM	RCD	DH

REV	DATE	BY	CHK	DESCRIPTION
P1	18/07/22	DM	RCD	DH

PLANNING

PROJECT: K2 Datacentre
 UNIT: Unit 4070 Kingswood Road
 ADDRESS: Citywest Business Campus
 DRAWING TITLE: Proposed Boundary Details
 DWS NO: 21174-RKQ-ZZ-ZZ-DR-A-1600
 PROJECT NO: 21174
 DATE: 18/07/22
 SCALE: VARIES

