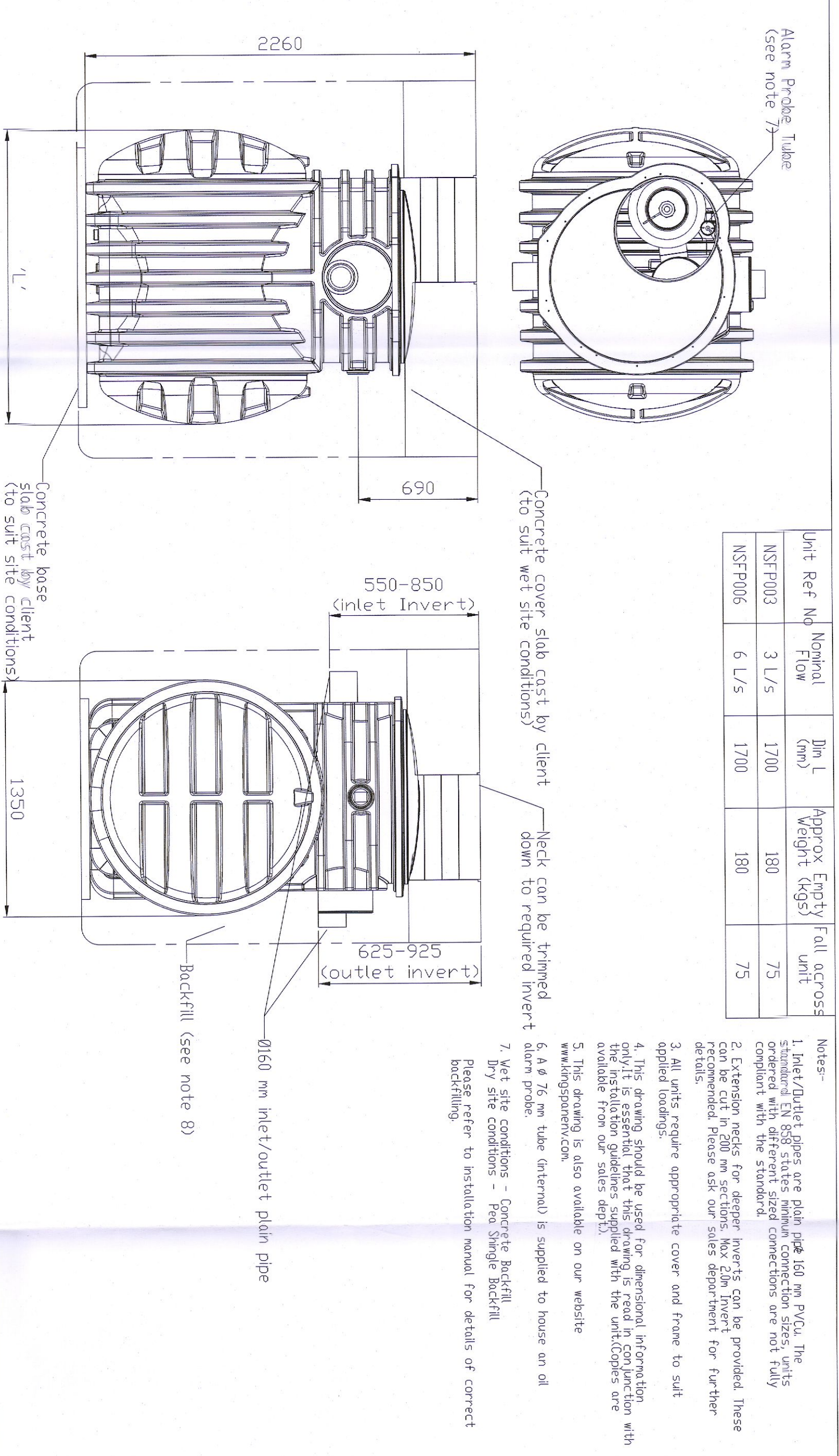


Unit Ref No	Nominal Flow	Dim L (mm)	Approx Empty Weight (kgs)	Fall across unit
NSFP003	3 L/S	1700	180	75
NSFP006	6 L/S	1700	180	75

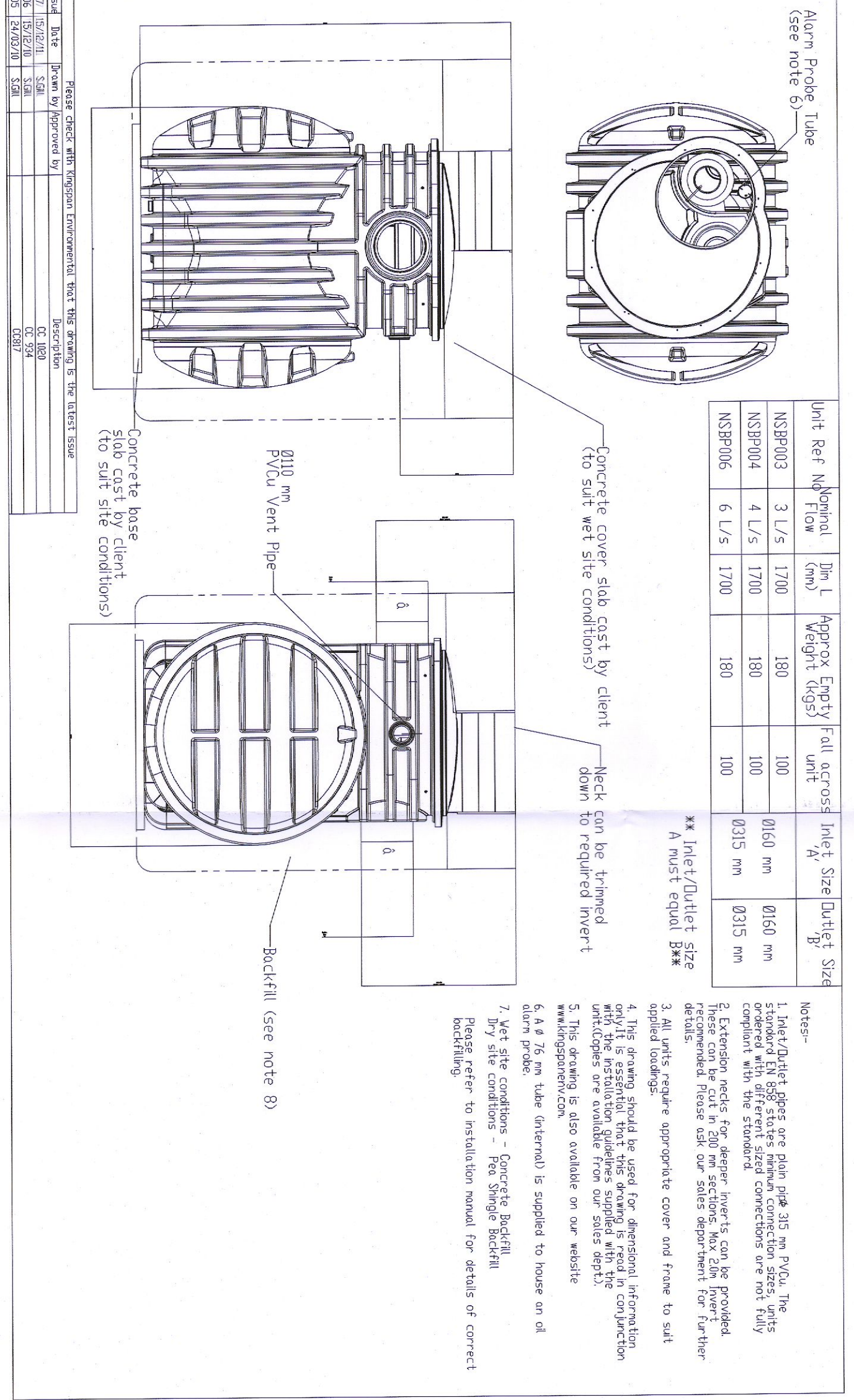
Notes:-
 1. Inlet/Outlet pipes are plain pipe 160 mm PVC-U. The standard EN 853 states minimum connection sizes, units ordered with different sized connections are not fully covered.
 2. Catcher necks for deeper inverts can be provided. These can be cut in 200 mm sections. Max 20m lower level than invert. Please ask our sales department for further details.
 3. All units require appropriate cover and frame to suit applied loadings.
 4. This drawing should be used for dimensional information only. For full details of construction and materials, please refer to the installation guidelines supplied with the unit. Copies are available from our sales dept.
 5. This drawing is also available on our website www.gspenr.com.
 6. A 75 mm tube (internal) is supplied to house an oil alarm probe.
 7. Wet site conditions - Pre Single Backfill.
 8. Dry site conditions - Pre Single Backfill.
 Please refer to installation manual for details of correct backfilling.



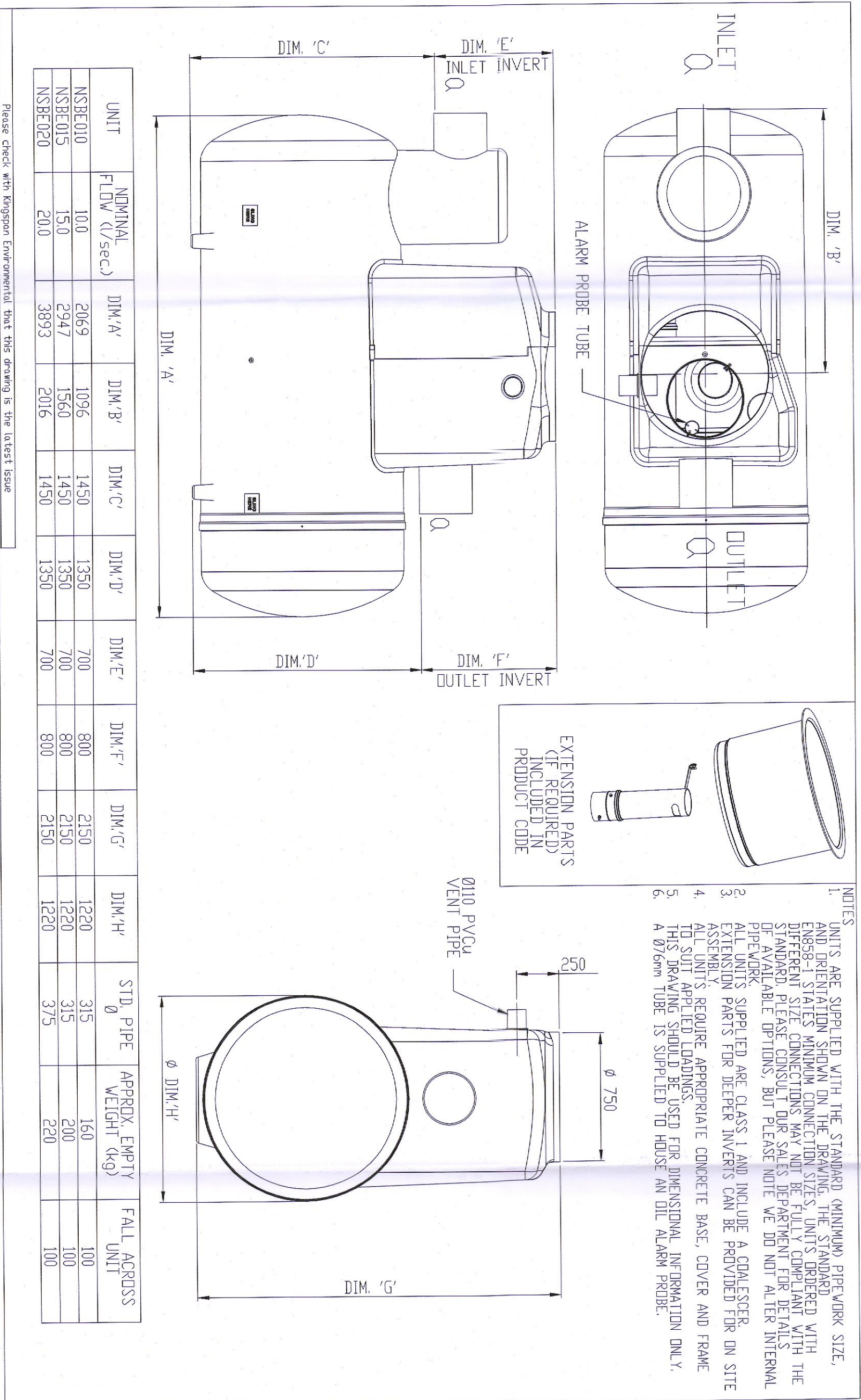
Unit Ref No	Nominal Flow	Dim L (mm)	Approx Empty Weight (kgs)	Fall across unit	Inlet Size	Outlet Size
NSBP003	3 L/S	1700	180	100	Ø160 mm	Ø160 mm
NSBP004	4 L/S	1700	180	100	Ø215 mm	Ø215 mm
NSBP006	6 L/S	1700	180	100	Ø215 mm	Ø215 mm

** Inlet/Outlet Size A must equal B*

Notes:-
 1. Inlet/Outlet pipes are plain pipe 160 mm PVC-U. The standard EN 853 states minimum connection sizes, units ordered with different sized connections are not fully covered.
 2. Catcher necks for deeper inverts can be provided. These can be cut in 200 mm sections. Max 20m lower level than invert. Please ask our sales department for further details.
 3. All units require appropriate cover and frame to suit applied loadings.
 4. This drawing should be used for dimensional information only. For full details of construction and materials, please refer to the installation guidelines supplied with the unit. Copies are available from our sales dept.
 5. This drawing is also available on our website www.gspenr.com.
 6. A 75 mm tube (internal) is supplied to house an oil alarm probe.
 7. Wet site conditions - Pre Single Backfill.
 8. Dry site conditions - Pre Single Backfill.
 Please refer to installation manual for details of correct backfilling.

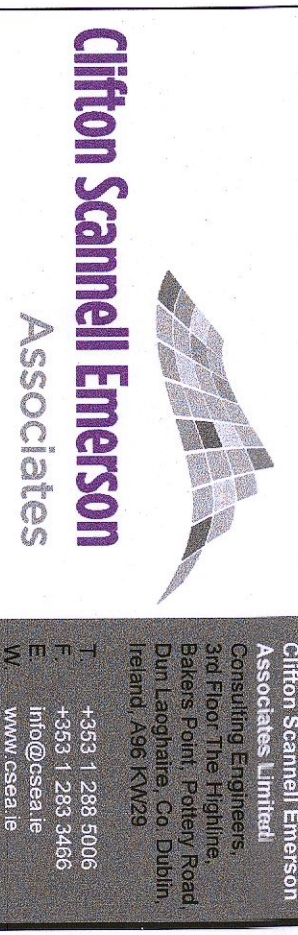


Unit Ref No	Nominal Flow	Dim L (mm)	Approx Empty Weight (kgs)	Fall across unit	Inlet Size	Outlet Size
NSBP003	3 L/S	1700	180	100	Ø160 mm	Ø160 mm
NSBP004	4 L/S	1700	180	100	Ø215 mm	Ø215 mm
NSBP006	6 L/S	1700	180	100	Ø215 mm	Ø215 mm



UNIT	NOMINAL FLOW (l/sec)	DIM 'A'	DIM 'B'	DIM 'C'	DIM 'D'	DIM 'E'	DIM 'F'	DIM 'G'	DIM 'H'	STD PIPE Ø	APPROX. EMPTY WEIGHT (kg)	FALL ACROSS UNIT
NSBE010	10.0	2069	1096	1450	1350	700	800	2150	1220	315	160	100
NSBE015	15.0	2347	1560	1450	1350	700	800	2150	1320	315	200	100
NSBE020	20.0	3093	2016	1450	1350	700	800	2150	1220	375	220	100

NOTES:
 1. UNITS ARE SUPPLIED WITH THE STANDARD (MINIMUM) PREWIRE SIZE AND ORIENTATION SHOWN ON THE DRAWING. THE STANDARD PREWIRE SIZE CONNECTIONS MAY NOT BE FULLY COMPLIANT WITH THE STANDARD. PLEASE CONSULT OUR SALES DEPARTMENT FOR DETAILS OF AVAILABLE OPTIONS, BUT PLEASE NOTE WE DO NOT ALTER INTERNAL ALIAS PARTS SUPPLIED ARE CLASS 1 AND INCLUDE A GONDOLIER. EXTENSION PARTS FOR DEEPER INVERTS CAN BE PROVIDED FOR ON SITE ASSEMBLY. REQUIRE APPROPRIATE CONCRETE BASE COVER AND FRAME TO SUIT APPLIED LOADINGS.
 2. THIS DRAWING SHOULD BE USED FOR DIMENSIONAL INFORMATION ONLY. THIS DRAWING SHOULD BE USED FOR DIMENSIONAL INFORMATION ONLY. THIS DRAWING SHOULD BE USED FOR DIMENSIONAL INFORMATION ONLY.
 3. THIS DRAWING SHOULD BE USED FOR DIMENSIONAL INFORMATION ONLY.
 4. THIS DRAWING SHOULD BE USED FOR DIMENSIONAL INFORMATION ONLY.
 5. THIS DRAWING SHOULD BE USED FOR DIMENSIONAL INFORMATION ONLY.
 6. THIS DRAWING SHOULD BE USED FOR DIMENSIONAL INFORMATION ONLY.
 7. THIS DRAWING SHOULD BE USED FOR DIMENSIONAL INFORMATION ONLY.
 8. THIS DRAWING SHOULD BE USED FOR DIMENSIONAL INFORMATION ONLY.
 9. THIS DRAWING SHOULD BE USED FOR DIMENSIONAL INFORMATION ONLY.
 10. THIS DRAWING SHOULD BE USED FOR DIMENSIONAL INFORMATION ONLY.
 11. THIS DRAWING SHOULD BE USED FOR DIMENSIONAL INFORMATION ONLY.
 12. THIS DRAWING SHOULD BE USED FOR DIMENSIONAL INFORMATION ONLY.
 13. THIS DRAWING SHOULD BE USED FOR DIMENSIONAL INFORMATION ONLY.
 14. THIS DRAWING SHOULD BE USED FOR DIMENSIONAL INFORMATION ONLY.
 15. THIS DRAWING SHOULD BE USED FOR DIMENSIONAL INFORMATION ONLY.
 16. THIS DRAWING SHOULD BE USED FOR DIMENSIONAL INFORMATION ONLY.
 17. THIS DRAWING SHOULD BE USED FOR DIMENSIONAL INFORMATION ONLY.
 18. THIS DRAWING SHOULD BE USED FOR DIMENSIONAL INFORMATION ONLY.
 19. THIS DRAWING SHOULD BE USED FOR DIMENSIONAL INFORMATION ONLY.
 20. THIS DRAWING SHOULD BE USED FOR DIMENSIONAL INFORMATION ONLY.
 21. THIS DRAWING SHOULD BE USED FOR DIMENSIONAL INFORMATION ONLY.
 22. THIS DRAWING SHOULD BE USED FOR DIMENSIONAL INFORMATION ONLY.
 23. THIS DRAWING SHOULD BE USED FOR DIMENSIONAL INFORMATION ONLY.
 24. THIS DRAWING SHOULD BE USED FOR DIMENSIONAL INFORMATION ONLY.
 25. THIS DRAWING SHOULD BE USED FOR DIMENSIONAL INFORMATION ONLY.
 26. THIS DRAWING SHOULD BE USED FOR DIMENSIONAL INFORMATION ONLY.
 27. THIS DRAWING SHOULD BE USED FOR DIMENSIONAL INFORMATION ONLY.
 28. THIS DRAWING SHOULD BE USED FOR DIMENSIONAL INFORMATION ONLY.
 29. THIS DRAWING SHOULD BE USED FOR DIMENSIONAL INFORMATION ONLY.
 30. THIS DRAWING SHOULD BE USED FOR DIMENSIONAL INFORMATION ONLY.
 31. THIS DRAWING SHOULD BE USED FOR DIMENSIONAL INFORMATION ONLY.
 32. THIS DRAWING SHOULD BE USED FOR DIMENSIONAL INFORMATION ONLY.
 33. THIS DRAWING SHOULD BE USED FOR DIMENSIONAL INFORMATION ONLY.
 34. THIS DRAWING SHOULD BE USED FOR DIMENSIONAL INFORMATION ONLY.
 35. THIS DRAWING SHOULD BE USED FOR DIMENSIONAL INFORMATION ONLY.
 36. THIS DRAWING SHOULD BE USED FOR DIMENSIONAL INFORMATION ONLY.
 37. THIS DRAWING SHOULD BE USED FOR DIMENSIONAL INFORMATION ONLY.
 38. THIS DRAWING SHOULD BE USED FOR DIMENSIONAL INFORMATION ONLY.
 39. THIS DRAWING SHOULD BE USED FOR DIMENSIONAL INFORMATION ONLY.
 40. THIS DRAWING SHOULD BE USED FOR DIMENSIONAL INFORMATION ONLY.
 41. THIS DRAWING SHOULD BE USED FOR DIMENSIONAL INFORMATION ONLY.
 42. THIS DRAWING SHOULD BE USED FOR DIMENSIONAL INFORMATION ONLY.
 43. THIS DRAWING SHOULD BE USED FOR DIMENSIONAL INFORMATION ONLY.
 44. THIS DRAWING SHOULD BE USED FOR DIMENSIONAL INFORMATION ONLY.
 45. THIS DRAWING SHOULD BE USED FOR DIMENSIONAL INFORMATION ONLY.
 46. THIS DRAWING SHOULD BE USED FOR DIMENSIONAL INFORMATION ONLY.
 47. THIS DRAWING SHOULD BE USED FOR DIMENSIONAL INFORMATION ONLY.
 48. THIS DRAWING SHOULD BE USED FOR DIMENSIONAL INFORMATION ONLY.
 49. THIS DRAWING SHOULD BE USED FOR DIMENSIONAL INFORMATION ONLY.
 50. THIS DRAWING SHOULD BE USED FOR DIMENSIONAL INFORMATION ONLY.
 51. THIS DRAWING SHOULD BE USED FOR DIMENSIONAL INFORMATION ONLY.
 52. THIS DRAWING SHOULD BE USED FOR DIMENSIONAL INFORMATION ONLY.
 53. THIS DRAWING SHOULD BE USED FOR DIMENSIONAL INFORMATION ONLY.
 54. THIS DRAWING SHOULD BE USED FOR DIMENSIONAL INFORMATION ONLY.
 55. THIS DRAWING SHOULD BE USED FOR DIMENSIONAL INFORMATION ONLY.
 56. THIS DRAWING SHOULD BE USED FOR DIMENSIONAL INFORMATION ONLY.
 57. THIS DRAWING SHOULD BE USED FOR DIMENSIONAL INFORMATION ONLY.
 58. THIS DRAWING SHOULD BE USED FOR DIMENSIONAL INFORMATION ONLY.
 59. THIS DRAWING SHOULD BE USED FOR DIMENSIONAL INFORMATION ONLY.
 60. THIS DRAWING SHOULD BE USED FOR DIMENSIONAL INFORMATION ONLY.
 61. THIS DRAWING SHOULD BE USED FOR DIMENSIONAL INFORMATION ONLY.
 62. THIS DRAWING SHOULD BE USED FOR DIMENSIONAL INFORMATION ONLY.
 63. THIS DRAWING SHOULD BE USED FOR DIMENSIONAL INFORMATION ONLY.
 64. THIS DRAWING SHOULD BE USED FOR DIMENSIONAL INFORMATION ONLY.
 65. THIS DRAWING SHOULD BE USED FOR DIMENSIONAL INFORMATION ONLY.
 66. THIS DRAWING SHOULD BE USED FOR DIMENSIONAL INFORMATION ONLY.
 67. THIS DRAWING SHOULD BE USED FOR DIMENSIONAL INFORMATION ONLY.
 68. THIS DRAWING SHOULD BE USED FOR DIMENSIONAL INFORMATION ONLY.
 69. THIS DRAWING SHOULD BE USED FOR DIMENSIONAL INFORMATION ONLY.
 70. THIS DRAWING SHOULD BE USED FOR DIMENSIONAL INFORMATION ONLY.
 71. THIS DRAWING SHOULD BE USED FOR DIMENSIONAL INFORMATION ONLY.
 72. THIS DRAWING SHOULD BE USED FOR DIMENSIONAL INFORMATION ONLY.
 73. THIS DRAWING SHOULD BE USED FOR DIMENSIONAL INFORMATION ONLY.
 74. THIS DRAWING SHOULD BE USED FOR DIMENSIONAL INFORMATION ONLY.
 75. THIS DRAWING SHOULD BE USED FOR DIMENSIONAL INFORMATION ONLY.
 76. THIS DRAWING SHOULD BE USED FOR DIMENSIONAL INFORMATION ONLY.
 77. THIS DRAWING SHOULD BE USED FOR DIMENSIONAL INFORMATION ONLY.
 78. THIS DRAWING SHOULD BE USED FOR DIMENSIONAL INFORMATION ONLY.
 79. THIS DRAWING SHOULD BE USED FOR DIMENSIONAL INFORMATION ONLY.
 80. THIS DRAWING SHOULD BE USED FOR DIMENSIONAL INFORMATION ONLY.
 81. THIS DRAWING SHOULD BE USED FOR DIMENSIONAL INFORMATION ONLY.
 82. THIS DRAWING SHOULD BE USED FOR DIMENSIONAL INFORMATION ONLY.
 83. THIS DRAWING SHOULD BE USED FOR DIMENSIONAL INFORMATION ONLY.
 84. THIS DRAWING SHOULD BE USED FOR DIMENSIONAL INFORMATION ONLY.
 85. THIS DRAWING SHOULD BE USED FOR DIMENSIONAL INFORMATION ONLY.
 86. THIS DRAWING SHOULD BE USED FOR DIMENSIONAL INFORMATION ONLY.
 87. THIS DRAWING SHOULD BE USED FOR DIMENSIONAL INFORMATION ONLY.
 88. THIS DRAWING SHOULD BE USED FOR DIMENSIONAL INFORMATION ONLY.
 89. THIS DRAWING SHOULD BE USED FOR DIMENSIONAL INFORMATION ONLY.
 90. THIS DRAWING SHOULD BE USED FOR DIMENSIONAL INFORMATION ONLY.
 91. THIS DRAWING SHOULD BE USED FOR DIMENSIONAL INFORMATION ONLY.
 92. THIS DRAWING SHOULD BE USED FOR DIMENSIONAL INFORMATION ONLY.
 93. THIS DRAWING SHOULD BE USED FOR DIMENSIONAL INFORMATION ONLY.
 94. THIS DRAWING SHOULD BE USED FOR DIMENSIONAL INFORMATION ONLY.
 95. THIS DRAWING SHOULD BE USED FOR DIMENSIONAL INFORMATION ONLY.
 96. THIS DRAWING SHOULD BE USED FOR DIMENSIONAL INFORMATION ONLY.
 97. THIS DRAWING SHOULD BE USED FOR DIMENSIONAL INFORMATION ONLY.
 98. THIS DRAWING SHOULD BE USED FOR DIMENSIONAL INFORMATION ONLY.
 99. THIS DRAWING SHOULD BE USED FOR DIMENSIONAL INFORMATION ONLY.
 100. THIS DRAWING SHOULD BE USED FOR DIMENSIONAL INFORMATION ONLY.



Clifton Scannell Emerson Associates

K2 STRATEGIC INFRASTRUCTURE IRELAND LTD.

K2 DATACENTRE PROPOSED SERVICES DETAILS SHEET 2

Drawn By: KB Date: 09/05/22
 Checked By: CD Scale: NTS@A1
 Project Code: 22_043 - CSE - 00 - XX - DR - C - 2912

Revision: P02
 Status Code: S0
 Suitability Description: WORK IN PROGRESS
 Preliminary