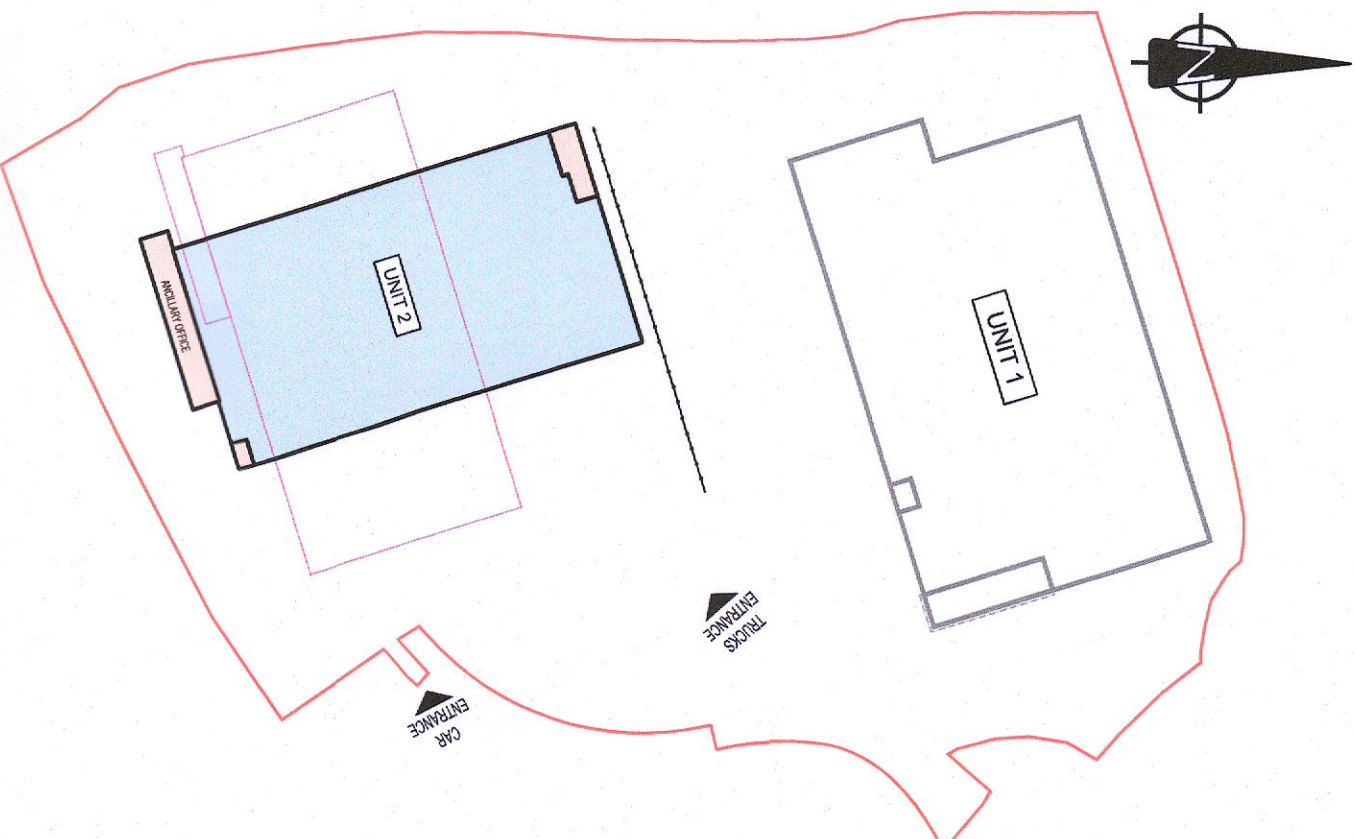


UNIT 2 - GROUND FLOOR PLAN  
SCALE 1:200

- NOTES:**
1. THIS DRAWING IS TO BE READ IN CONJUNCTION WITH ALL OTHER RELEVANT PERMITS & SPECIFICATIONS.
  2. DO NOT SCALE. USE FIGURED DIMENSIONS ONLY.



KEY PLAN  
SCALE 1:250

TABLE OF GROSS INTERNAL FLOOR AREAS & USES

UNIT	FLOOR	OFFICE	STAFF FACILITIES	WAREHOUSE	TOTAL PROP.
UNIT 2	GROUND FLOOR	141	294.42	5,081.42	5,516.84
	1ST FLOOR	155.42	54.42	5,259.84	5,569.68
UNIT 1	1ST FLOOR	208.64	6,029.84	—	6,238.48
	2ND FLOOR	155.42	94.42	—	249.84
TOTAL		511.42	413.42	5,081.42	6,011.42
		2,938.4	4,469.84	5,259.84	8,777.84

**PLANNING AI**  
 WAREHOUSE DEVELOPMENT AT  
 BROWNSBARN,  
 CITYWEST CAMPUS,  
 DUBLIN 24

UNIT 2  
 GROUND FLOOR PLAN

Approved by:  
**Exeter Ireland Property (V) B Limited**  
**KAVANAGH BURKE**  
 CONSULTING ENGINEERS  
 01 - 450 0894 Unit C3, Calmount Pk.  
 01 - 458 4340 Ballinacorney  
 Email: pav@kavagnahburke.com  
 Dublin 12

Date: 12/01/2021  
 Scale: 1:200  
 Drawing No: GA-A-2-01  
 Rev: PL8

PERMITTED DRAWING  
 (PROVIDED FOR RECORD PURPOSES ONLY)  
 SDCC GRANTED PLANNING REGISTER  
 REFERENCE NO. SD21A0162