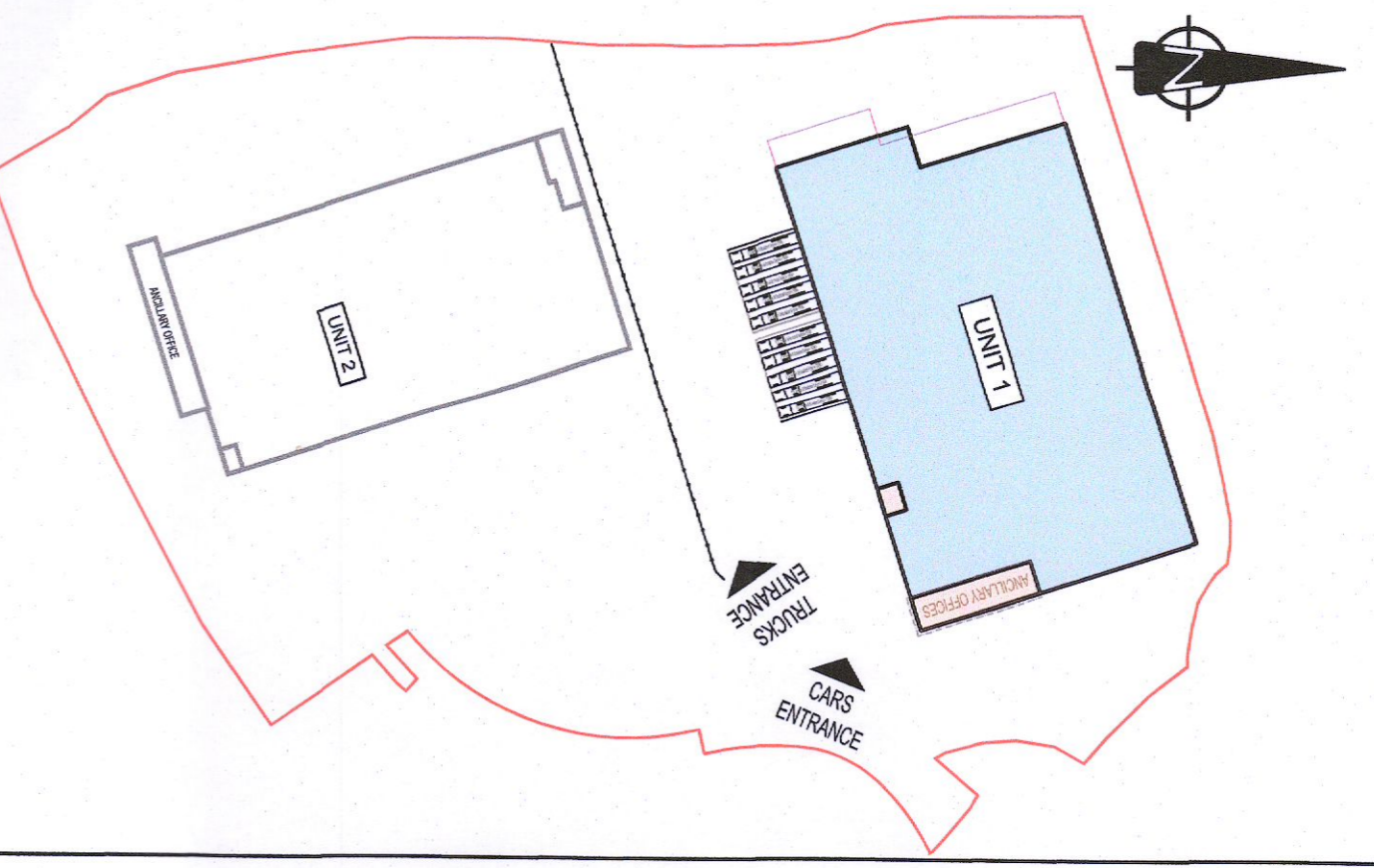


- NOTES:**
1. THIS DRAWING IS TO BE READ IN CONJUNCTION WITH ALL OTHER RELEVANT DRAWINGS & SPECIFICATIONS.
 2. DO NOT SCALE. USE FIGURED DIMENSIONS ONLY.



KEY PLAN
SCALE 1:1750

TABLE OF GROSS INTERNAL FLOOR AREAS (LUSERS)

UNIT	OFFICE	STAFF	WAREHOUSE	TOTAL PROP.
GROUND FLOOR	200 m ²	200 m ²	6381 m ²	7281 m ²
1ST FLOOR	81 m ²	74 m ²	2796 m ²	2851 m ²
2ND FLOOR	81 m ²	74 m ²	2796 m ²	2851 m ²
TOTAL	362 m ²	348 m ²	11973 m ²	12683 m ²

PLANNING A1

Warehouse Development at Brownsbarn, Citywest Campus, Dublin 24

Unit 1
Second Floor Plan

Exeter Ireland Property IV B Limited

KAVANAGH BURKE
CONSULTING ENGINEERS

01 - 450 0894
01 - 428 4340
Ballymount, Dublin 12

Unit 5A, Calmount Park
200, Ballymount, Dublin 12

Scale: 1:200 (P1)
Date: JANUARY 2022

Project No: GA-A-1-03
Drawing No: P.13

Permitted Drawing
Provided for Record Purposes Only
SDCC Granted Planning Register
Reference No. SD21A0162

UNIT 1 - SECOND FLOOR PLAN
SCALE 1:200