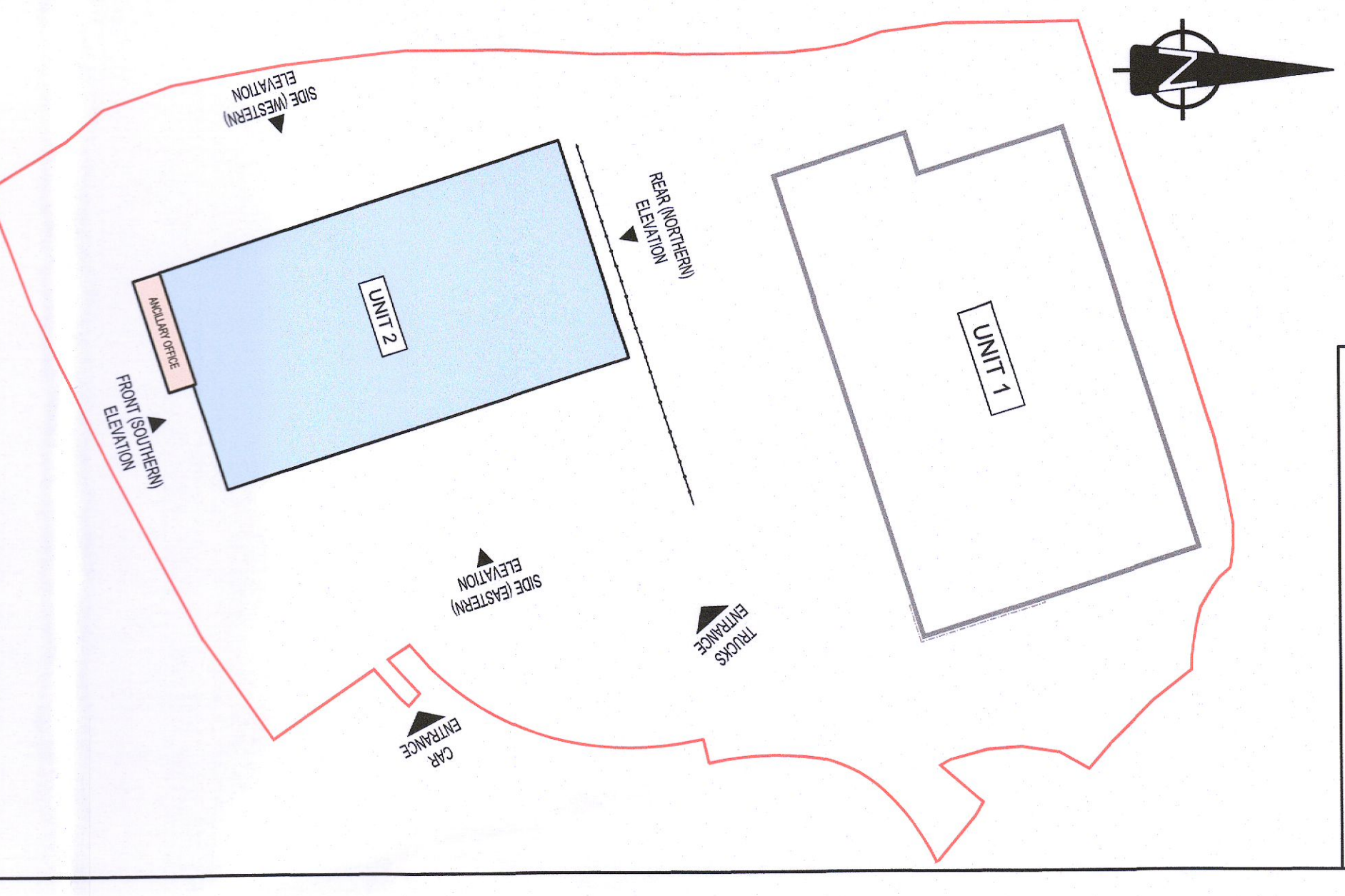


- NOTES:**
1. THIS DRAWING IS TO BE READ IN CONJUNCTION WITH ALL OTHER RELEVANT DRAWINGS & SPECIFICATIONS.
  2. DO NOT SCALE. USE FIGURED DIMENSIONS ONLY.



**ALTERATIONS DESCRIPTION:**

**I. Alterations to Unit 2 are as follows:**

- Omission of warehouse office/staff facilities block at the south-east & north-west corner of the warehouse resulting in:
  - change of use of 40m<sup>2</sup> of office floor area to warehouse floor area and
  - change of use of 75m<sup>2</sup> of staff facilities floor area to warehouse floor area and
- Addition of a 3.7m high perimeter blockwork wall internally within the warehouse area, resulting in a warehouse floor area reduction of 63m<sup>2</sup>.
- Alteration to the ancillary office/staff facilities block resulting in:
  - reduction of 101m<sup>2</sup> of office floor area and addition of 11m<sup>2</sup> of staff facilities floor area on ground floor plan,
  - reduction of 10m<sup>2</sup> of office floor area & 52 m<sup>2</sup> of staff facilities floor area over 1<sup>st</sup> & 2<sup>nd</sup> floor plan.
- Elevation changes:
  - Reduction of 2 no. level floors and addition of 5 no. dock leveler doors & associated canopy to the building's north-western elevation.

**WAREHOUSE DEVELOPMENT AT BROWNSBARN, CITYWEST CAMPUS, DUBLIN 24**

**UNIT 2 ARCHITECTURAL ELEVATIONS**

Exeter Ireland Property IV B Limited

**KAVANAGH BURKE CONSULTING ENGINEERS**

Tel. 01 - 450 0894 Unit 63, Calmount Pt. Ballymount, Dublin 12.  
 Fax. 01 - 425 4340  
 Email: pav@kavburke.ie

Scale: 1:200 Date: 21.7.2022

Drawn by: PK Checked by: PK

D1678 GA-A-205 P19

Rev	Date	By	Col	Iss	Reason
1.0	25.07.2022	TK	PK	PK	ISSUED FOR PLANNING ALTERNATION