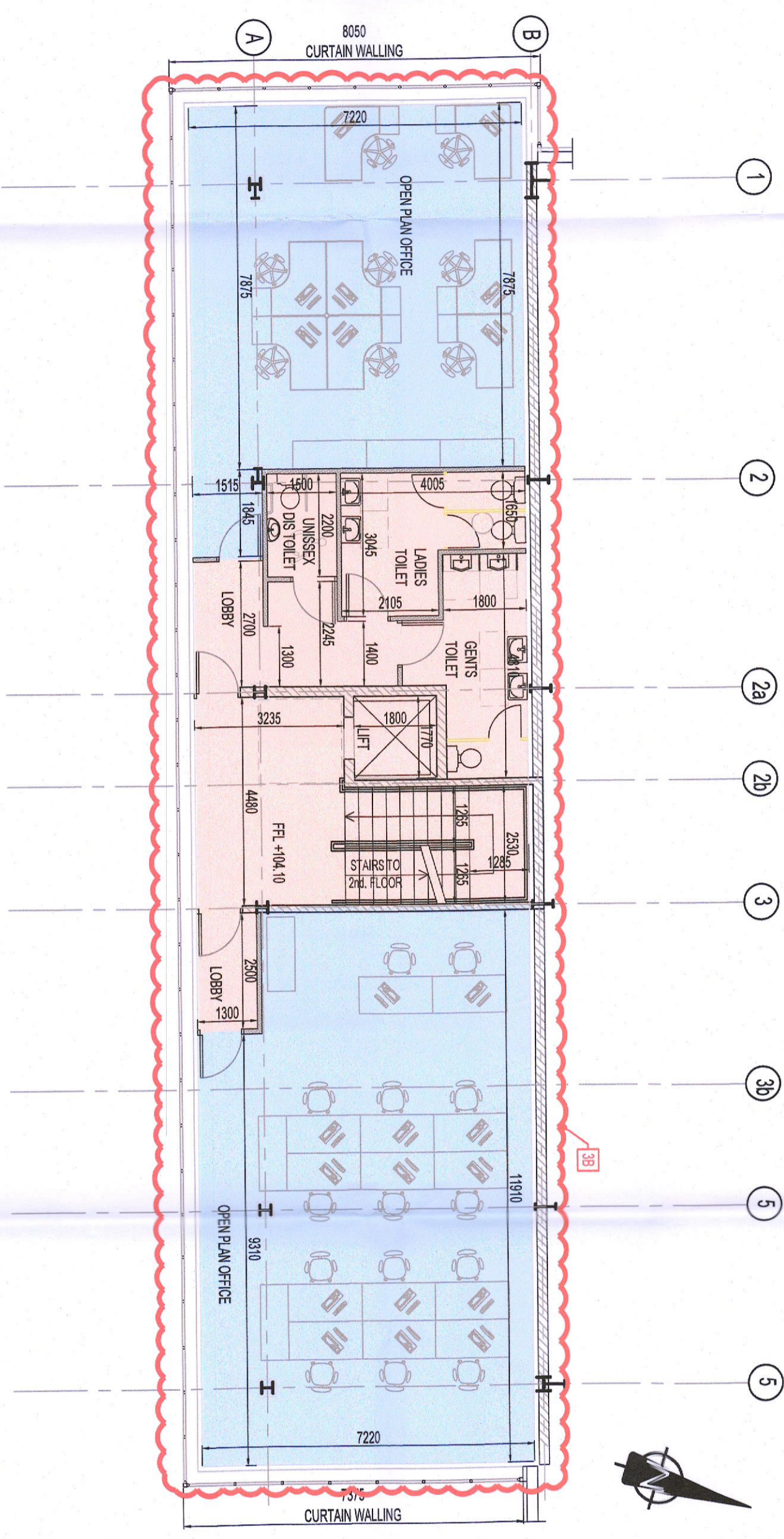
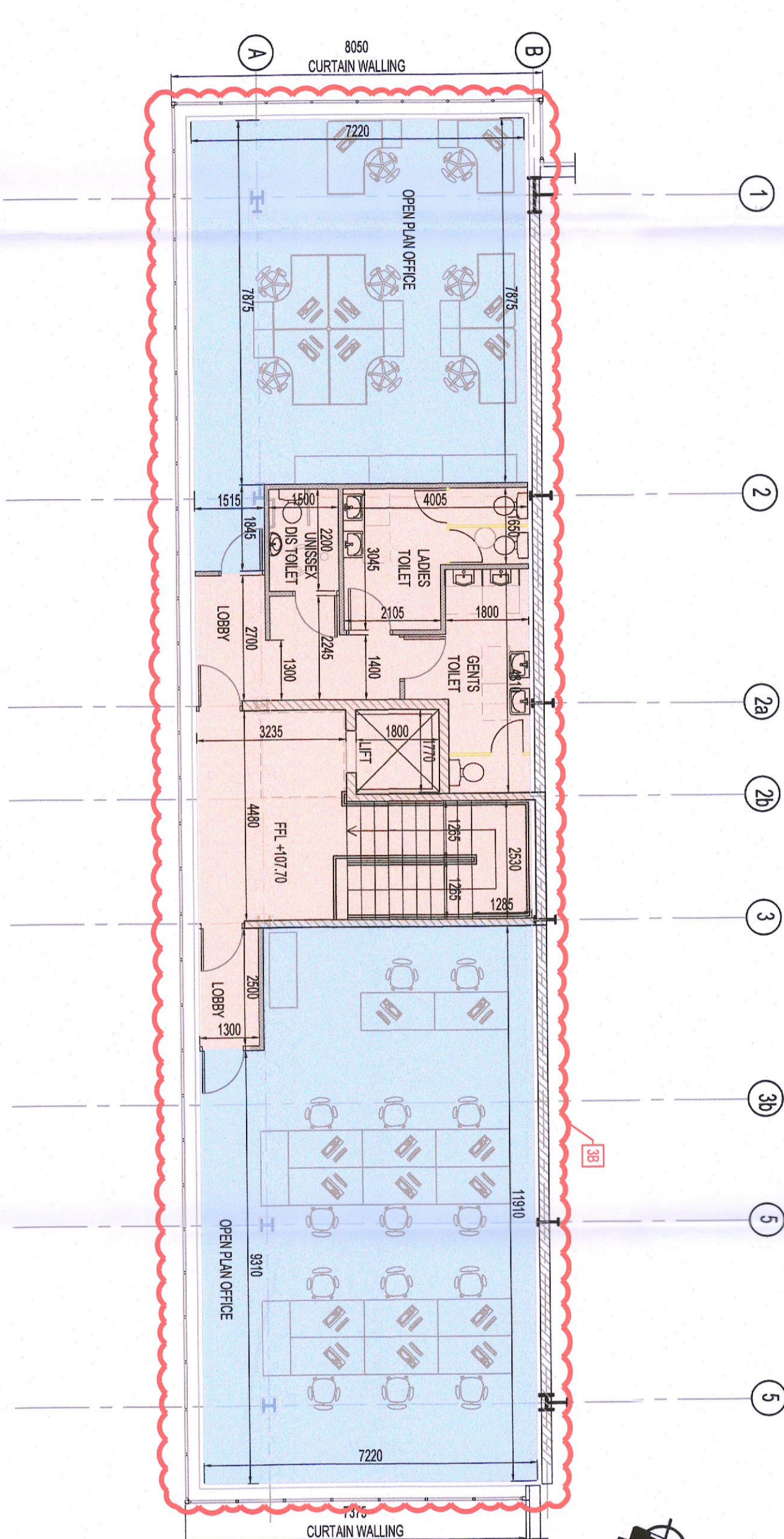


ANCILLARY OFFICES - GROUND FLOOR PLAN
SCALE 1:100



ANCILLARY OFFICES - FIRST FLOOR PLAN
SCALE 1:100

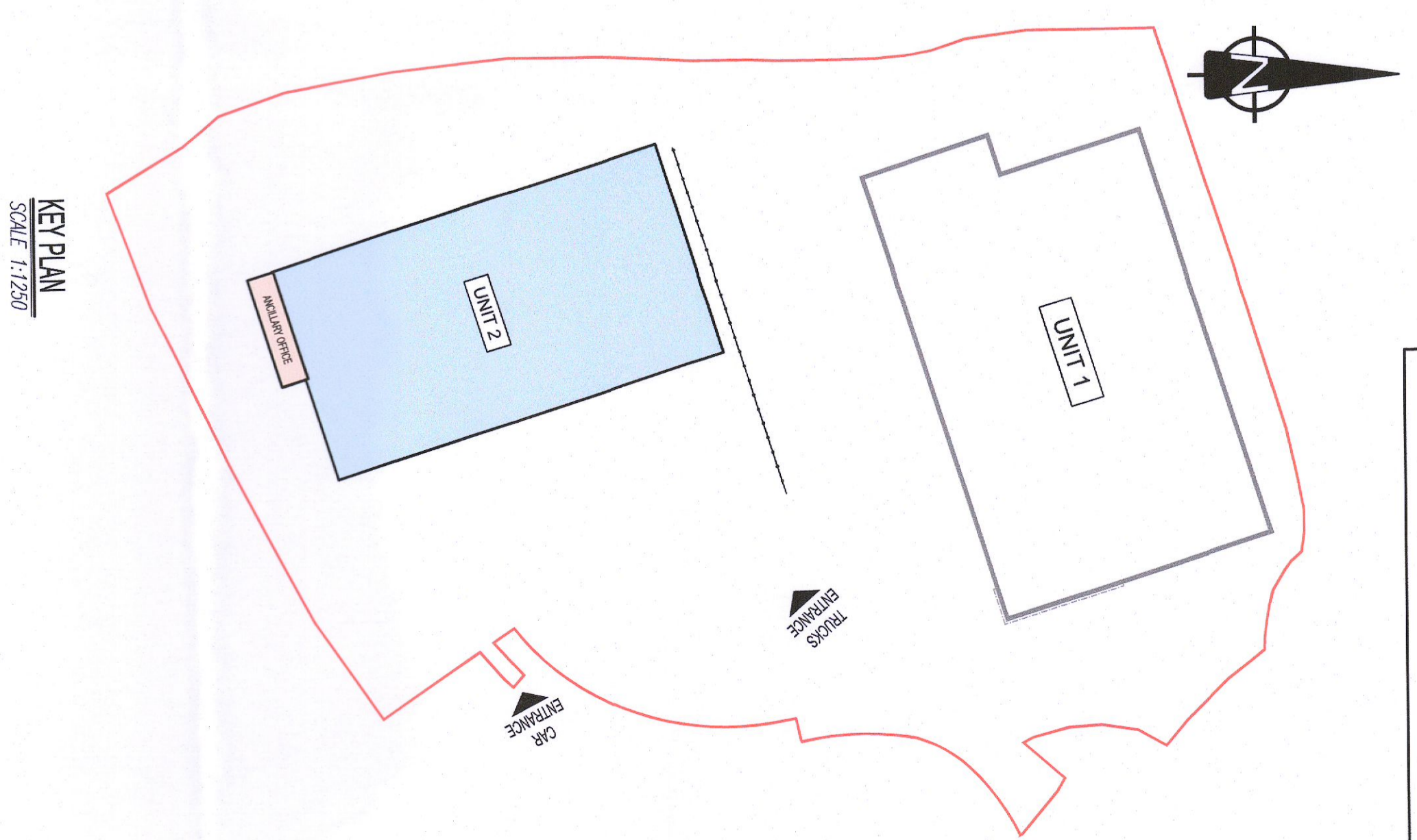


ANCILLARY OFFICES - SECOND FLOOR PLAN
SCALE 1:100

ALTERATIONS DESCRIPTION

All alterations to Unit 2 are as follows:

1. Alteration to rear of ancillary staff facilities block at the south-east & front of rear of the warehouse resulting in:
 - A. change of use of 40m² of office floor area to warehouse floor area and
 - B. change of use of 7m² of staff facilities floor area to warehouse floor area on the ground floor.
2. Addition of a 2.4m high perimeter blockwork wall internally within the warehouse area, resulting in a warehouse floor area reduction of 69m².
3. Alteration to the ancillary office/staff facilities block resulting in:
 - A. reduction of 10m² of office floor area and addition of 11m² of staff facilities floor area on ground floor plan.
 - B. reduction of 104m² of office floor area & 52 m² of staff facilities floor area over 1 & 2nd floor plan.
4. Elevation changes to no. level doors and addition of 6 no. dock leveler doors & associated canopy to the building's north-eastern elevation.



KEY PLAN
SCALE 1:1250

NOTES:

1. THIS DRAWING IS TO BE READ IN CONJUNCTION WITH ALL OTHER RELEVANT DRAWINGS & SPECIFICATIONS.
2. DIMENSIONS SCALE USHER DIMENSIONS ONLY.

TABLE OF GROSS INTERNAL FLOOR AREAS & USES AS PREVIOUSLY GRANTED UNDER REG. NO. S21/AN/D12

UNIT	OFFICE	STAFF FACILITIES	WAREHOUSE	TOTAL PROP.
GROUND FLOOR	141	224 m ²	5,850 m ²	6,215 m ²
1 ST FLOOR	165 m ²	2,675 m ²	5,450 m ²	8,290 m ²
2 ND FLOOR	165 m ²	1,075 m ²	5,450 m ²	6,690 m ²
TOTAL	471 m ²	4,974 m ²	16,750 m ²	22,195 m ²

TABLE OF GROSS INTERNAL FLOOR AREAS & USES FOR THIS PLANNING APPLICATION

UNIT	OFFICE	STAFF FACILITIES	WAREHOUSE	TOTAL PROP.
GROUND FLOOR	141	151 m ²	5,100 m ²	5,392 m ²
1 ST FLOOR	145 m ²	81 m ²	4,875 m ²	5,099 m ²
2 ND FLOOR	145 m ²	81 m ²	4,875 m ²	5,099 m ²
TOTAL	431 m ²	293 m ²	14,850 m ²	15,574 m ²

WAREHOUSE DEVELOPMENT AT BROWNSBARN, CITYWEST CAMPUS, DUBLIN 24

UNIT 2 ANCILLARY OFFICE & WAREHOUSE TOILET BLOCK FLOOR PLANS

Exeter Ireland Property IV B Limited

KAVANAGH BURKE CONSULTING ENGINEERS

01 - 450 0894 Unit C3 Calmount Pt. Dublin 12.
Email: phoenag@kavanaghburke.com

Scale: 1:100 Date: JULY 2022

D1678 GA-204 P19