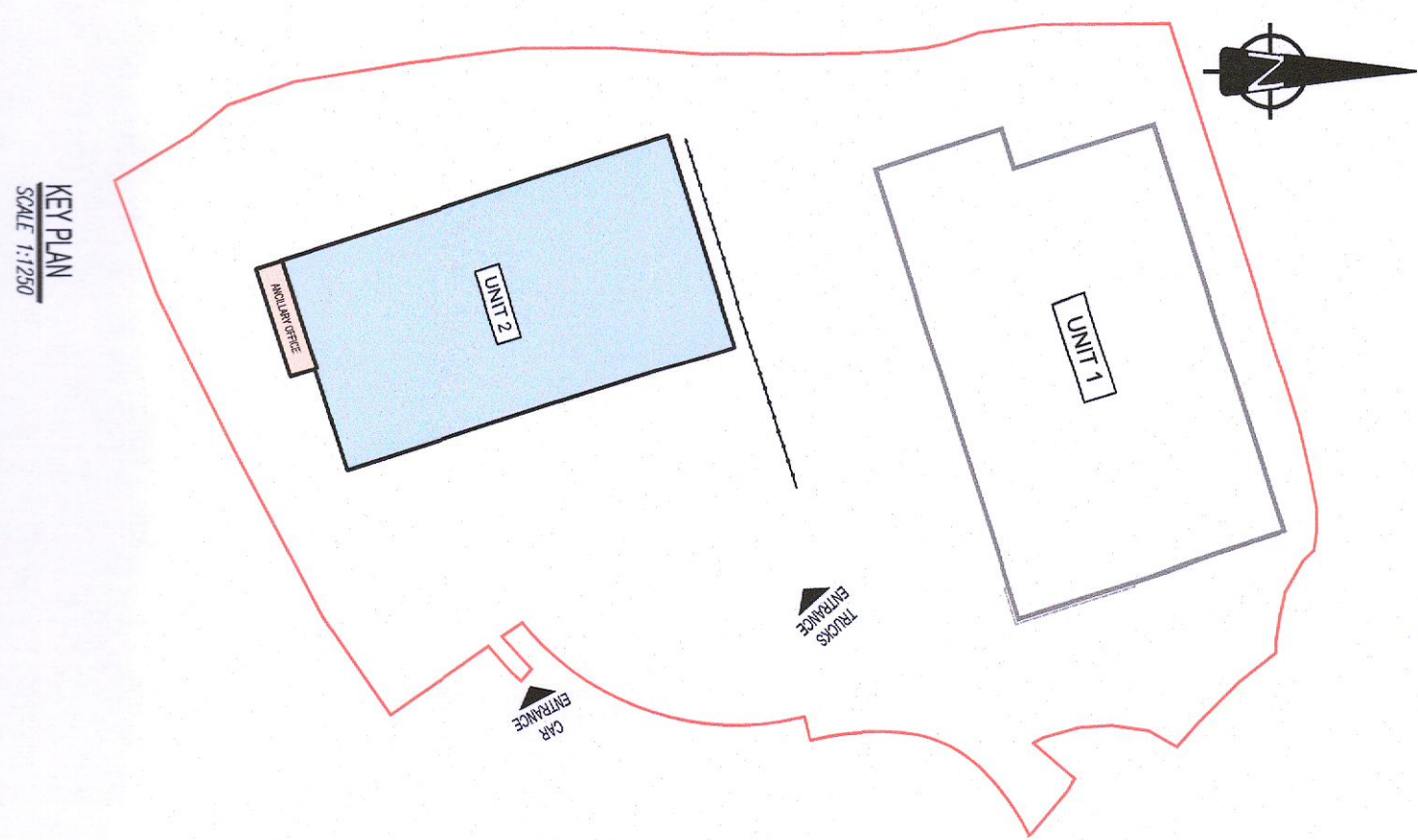


UNIT 2 - GROUND FLOOR PLAN  
SCALE 1:200



**ALTERATIONS DESCRIPTION:**  
 II. Alterations to Unit 2 are as follows:  
 1. Omission of warehouse office/staff facilities block at the south-east & north-west corner of the warehouse resulting in:  
 A. change of use of 40m<sup>2</sup> of office floor area to warehouse floor area and  
 B. change of use of 7m<sup>2</sup> of staff facilities floor area to warehouse floor area on the ground floor;  
 2. Addition of a 2.4m high perimeter blockwork wall internally within the warehouse area, resulting in a warehouse floor area reduction of 1010m<sup>2</sup> of office floor area and addition of 11m<sup>2</sup> of staff facilities floor area on ground floor plan.  
 3. Alteration to an ancillary office/staff facilities block resulting in:  
 A. reduction of 1010m<sup>2</sup> of office floor area and addition of 11m<sup>2</sup> of staff facilities floor area on ground floor plan.  
 4. Elevational changes:  
 A. Reduction of 2 no. level doors and addition of 6 no. dock leveler doors & associated canopy to the building's north-western elevation.

TABLE OF GROSS INTERNAL FLOOR AREAS & USES AS PREVIOUSLY GRANTED UNDER REG. REF. SD21AND162

UNIT	OFFICE	STAFF FACILITIES	WAREHOUSE	TOTAL FPC <sup>2</sup>
UNIT 2	GROUND FLOOR	441	274	5,376
	1ST FLOOR	155	54	2,775
TOTAL		596	328	8,151

TABLE OF GROSS INTERNAL FLOOR AREAS & USES FOR THIS PLANNING APPLICATION

UNIT	OFFICE	STAFF FACILITIES	WAREHOUSE	TOTAL FPC <sup>2</sup>
UNIT 2	GROUND FLOOR	159	5,106	5,265
	1ST FLOOR	81	4,775	4,856
TOTAL		240	9,881	10,121

**PLANNING ALTERATION**

WAREHOUSE DEVELOPMENT AT BROWNSBARN, CITYWEST CAMPUS, DUBLIN 24

UNIT 2 GROUND FLOOR PLAN

Prepared by: **KAVANAGH BURKE CONSULTING ENGINEERS**

Project No: D1678

Scale: 1:200

Date: 18/09/2021

Author: P19

Check: P19

Issue: 01/11/2022

Client: Exeter Ireland Property IV B Limited

Unit 33, Calmount Park, Ballinacorney, Dublin 12

Tel: 01-490 0894

Fax: 01-428 4340

Email: kavanagh@kavanaghburke.ie