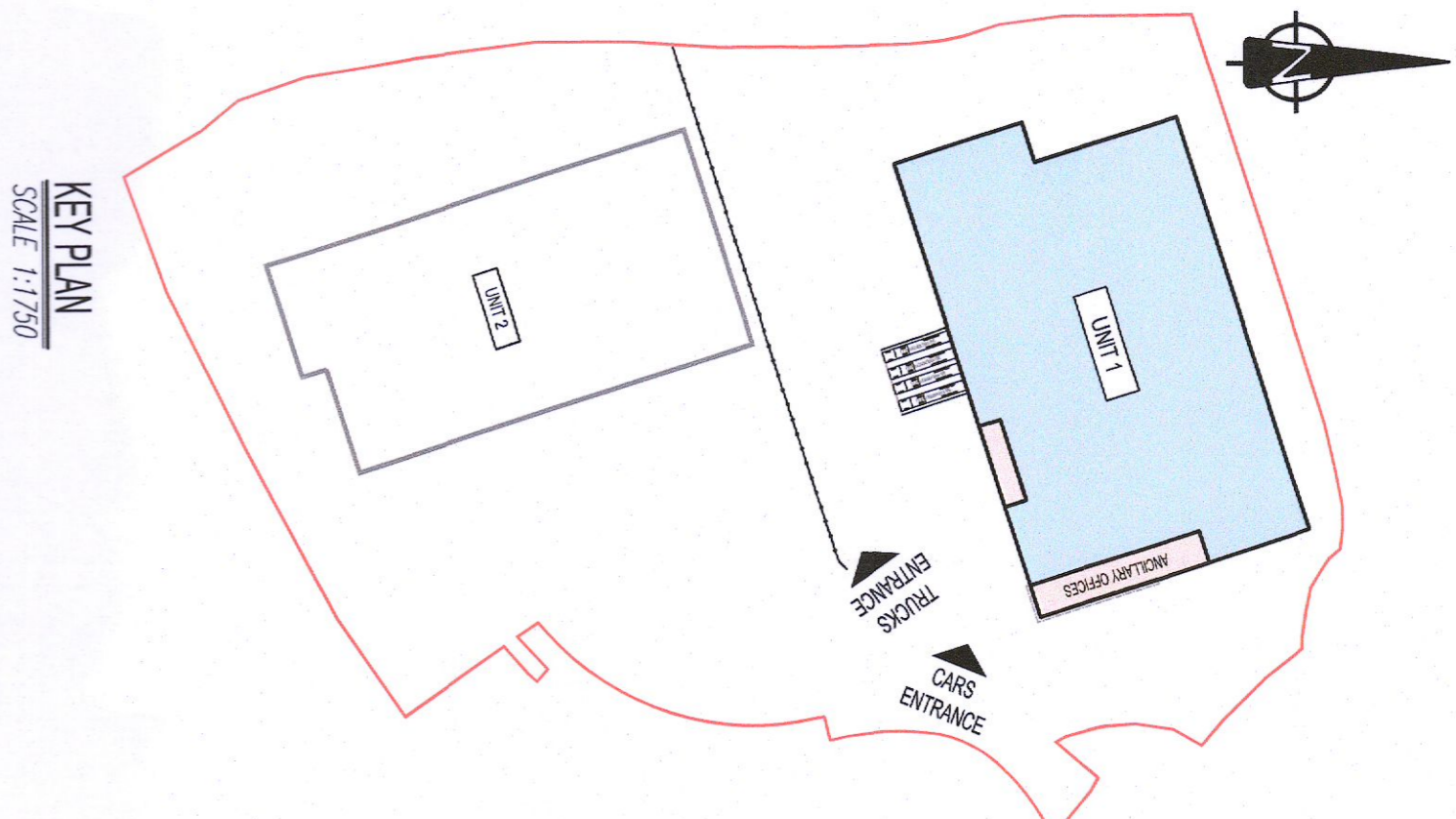


ALTERATIONS DESCRIPTION:

1. Addition to Unit 1 as set out as follows:
 - A. Reduction of 237 m² of warehouse floor area on the ground floor due to:
 - a. change of use of 63m² of warehouse floor area to office floor area
 - b. change of use of 93m² of warehouse floor to staff facilities floor area on the ground floor plan, and
 - c. the remainder due to the addition of a 2.4m high perimeter blockwork wall in the warehouse area.
 2. Change of use of 14m² of staff facilities floor area to office floor area at the ancillary office ground floor plan.
 3. Change of use of 14 m² of office floor area to staff facilities floor area over 1st & 2nd floor plan.
 4. Reduction of 28 m² of office floor area over 1st and 2nd floor plan to dedicate 5. floor internal alterations to the ancillary staff facilities/office spaces with no area alterations.
 5. Floor internal alterations to the ancillary staff facilities/office spaces with no area alterations.
 6. Elevational changes:
 - a. Omission of 5 no. dock levelers & associated canopy and addition of 1 no. fire escape door to the building's southern elevation.
 - b. Addition of 2 no. fire escape doors to the building's northern elevation.



- NOTES:**
1. THIS DRAWING IS TO BE READ IN CONJUNCTION WITH ALL OTHER RELEVANT DRAWINGS & SPECIFICATIONS.
 2. DO NOT SCALE. USE FIGURED DIMENSIONS ONLY.

TABLE OF GROSS INTERNAL FLOOR AREAS & USES AS PREVIOUSLY GRANTED UNDER REG. REF. S02140102

UNIT	OFFICE	STAFF FACILITIES	WAREHOUSE	TOTAL PROP.
GROUND FLOOR	248 m ²	248 m ²	6,881 m ²	7,377 m ²
1 ST FLOOR	161 m ²	74 m ²	—	235 m ²
2 ND FLOOR	161 m ²	74 m ²	—	235 m ²
TOTAL	570 m²	396 m²	6,881 m²	12,647 m²

TABLE OF GROSS INTERNAL FLOOR AREAS & USES FOR THIS PLANNING APPLICATION

UNIT	OFFICE	STAFF FACILITIES	WAREHOUSE	TOTAL PROP.
GROUND FLOOR	77 m ²	328 m ²	6,346 m ²	7,148 m ²
1 ST FLOOR	161 m ²	74 m ²	—	235 m ²
2 ND FLOOR	161 m ²	74 m ²	—	235 m ²
TOTAL	399 m²	476 m²	6,346 m²	10,621 m²

PLANNING ALTERATION

14/15/2022, 11:53 AM ISSUED FOR PLANNING ALTERATION

WAREHOUSE DEVELOPMENT AT BRONNSBARN, CITYWEST CAMPUS, DUBLIN 24

UNIT 1 GROUND FLOOR PLAN

Exeter Ireland Property IV B Limited

KAVANAGH BURKE CONSULTING ENGINEERS

01 - 450 0694 Unit G3, Calmont, Pt. Bellinacorney, Dublin 12

01 - 435 4340

Email: patrick.kavanagh@kavanaghburke.ie

Scale: 1:200

Date: 14/11/2022

Sheet: D1678

Project: GAA-1-01

Rev: PL4

UNIT 1 - GROUND FLOOR PLAN

SCALE: 1:200