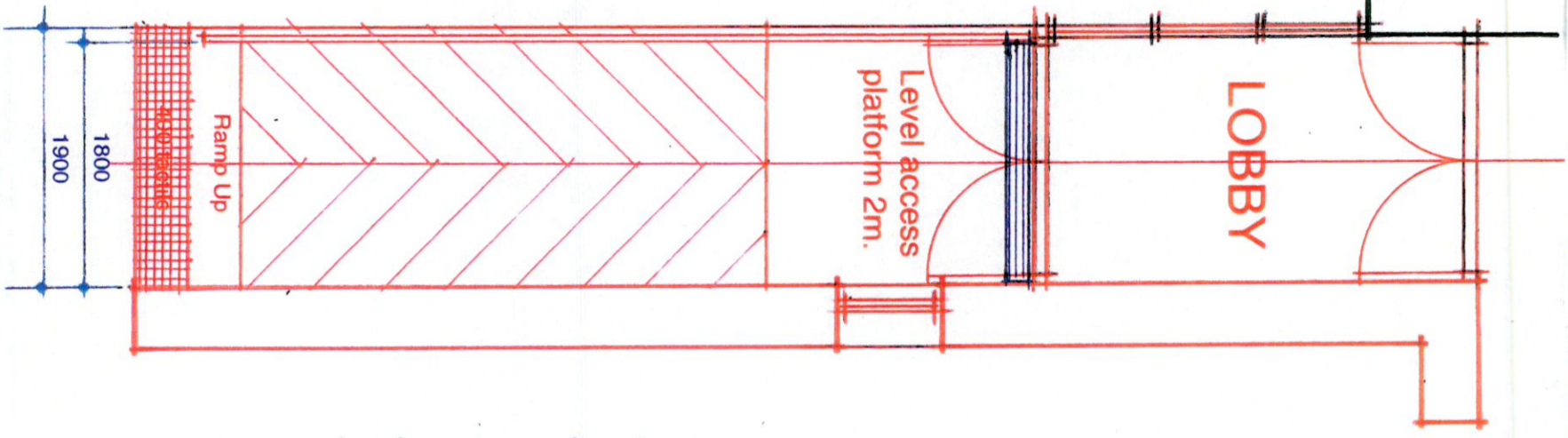
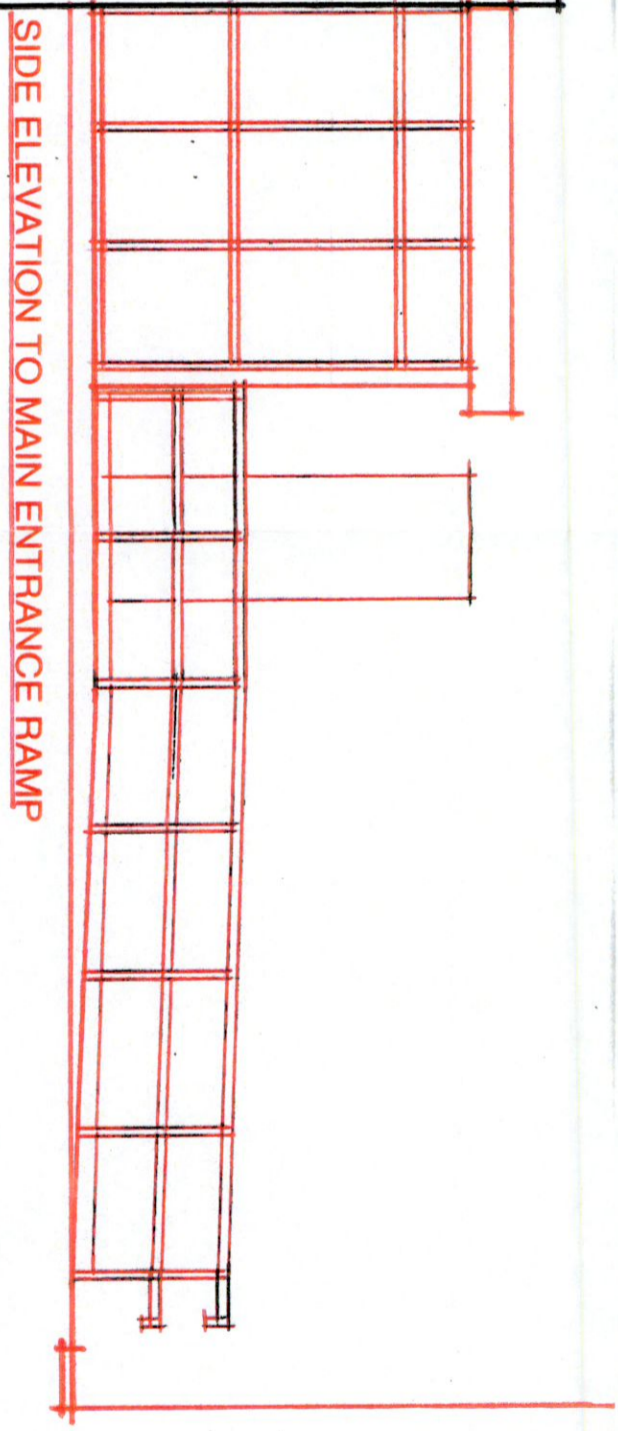


LOBBY

Level access platform 2m.



Glazed Entrance Lobby - dark grey framing and Zinc fascia overhead.



SIDE ELEVATION TO MAIN ENTRANCE RAMP

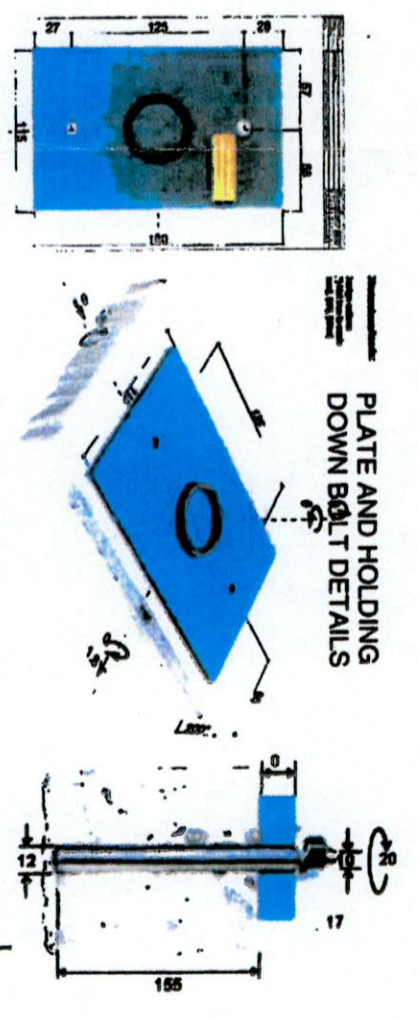
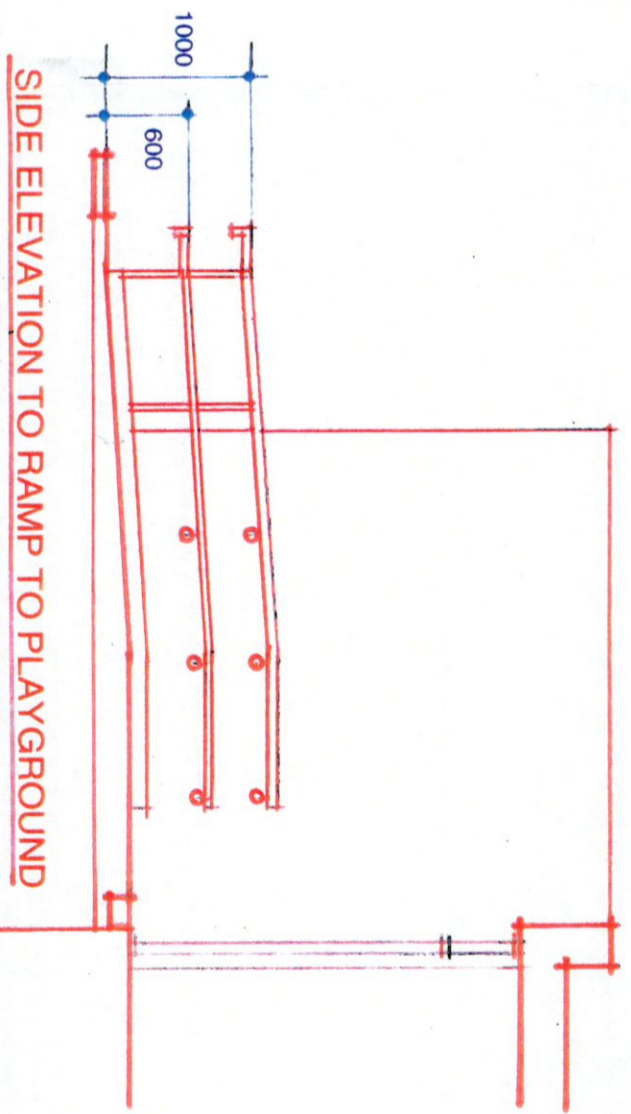
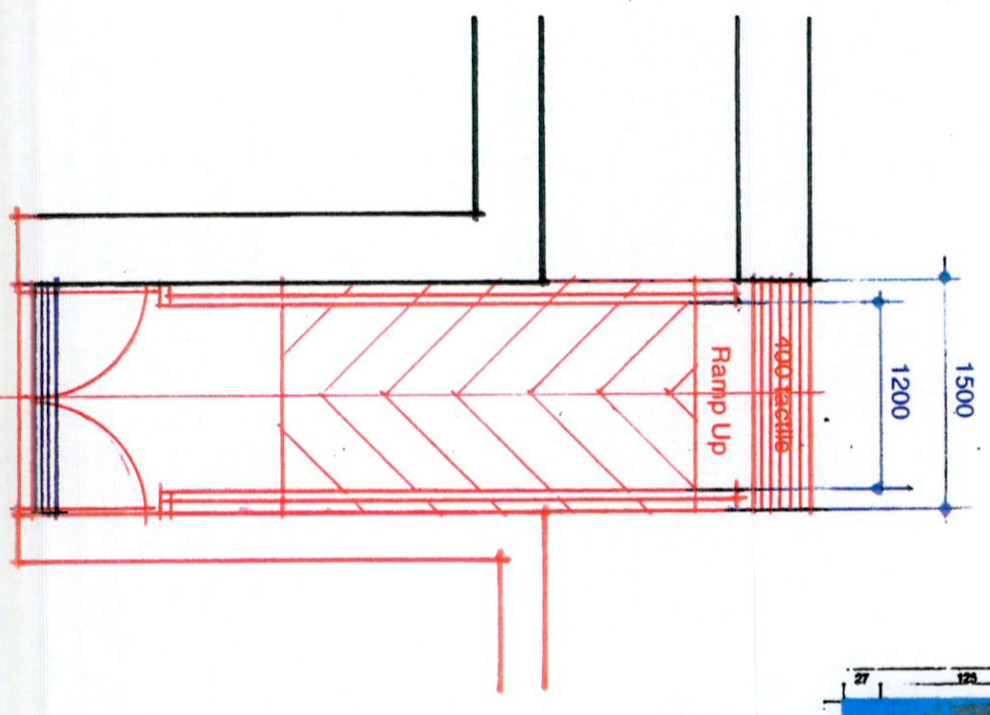
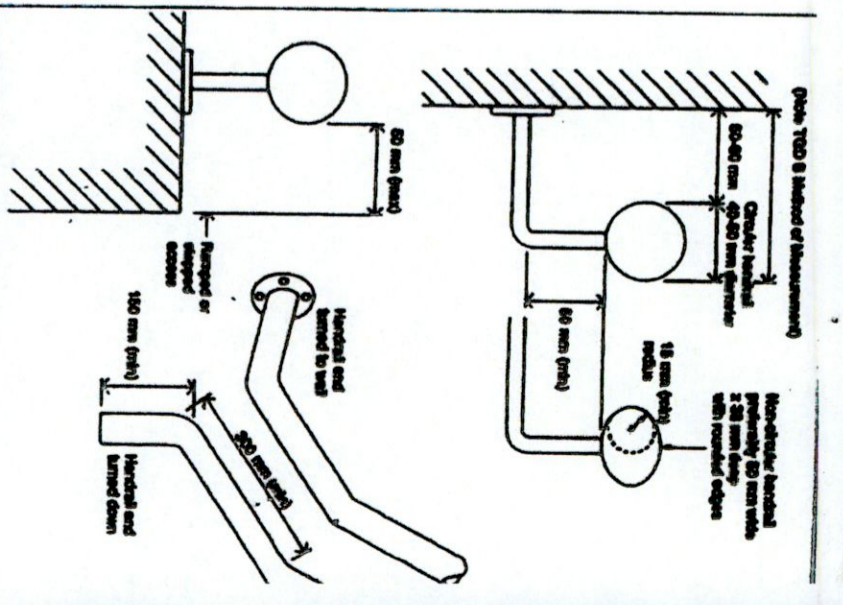


PLATE AND HOLDING DOWN BOLT DETAILS



SIDE ELEVATION TO RAMP TO PLAYGROUND



STANDARD HANDRAIL DETAILS PER BUILDING REGULATIONS.

Notes: All handrails, posts and Guarding are in be 50mm vertical-top rail and 40mm mild steel tubular lower rail. Provide for a 100 high x 6mm thick wheelchair skirting guide to both sides of each ramp as indicated above. Entire steel elements to be finished in Galvacoat [supplied by Galco] two pack paint in a matt black finish. Note the requirement for a 400 tactile 400 away from the beginning of each ramp. All platforms and ramps are to have a brushed concrete finish with bullnosed edges. Diagonal lines indicated are for the direction of ramp only and not to be reflected in the concrete finish. Note black finished drainage level access grills.

Name:	Date:	Issue:	Author:

Project: **St. Joseph's Boys School**

Drawing: **Access Ramp Details**

Scale: 1:50

Date: JULY 2022

Permit: LB

Issue: A

Rev. no: **21.04.08**

LOUIS BURKE ARCHITECTS

The Studio
33a Wexdale Park
Terenure
Dublin 6
Tel: 490133 / 490421
Email: main@louisburke.com

RIAI
Registered Architect
2022