

GENERAL NOTES

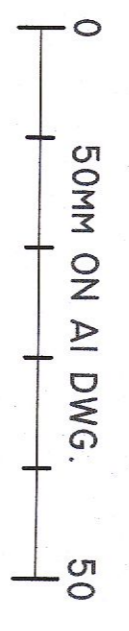
1. DO NOT SCALE THIS DRAWING. WORK ONLY TO FIGURED DIMENSIONS.
2. FOR ALL RELEVANT NOTES, REFER TO STRUCTURAL AND CIVIL ENGINEERING PERFORMANCE SPECIFICATION.
3. ANY DISCREPANCIES ARE TO BE REPORTED TO PINNACLE CONSULTING ENGINEERS IMMEDIATELY.
4. THIS DRAWING IS TO BE READ IN CONJUNCTION WITH ALL OTHER RELEVANT ENGINEERS, ARCHITECTS AND SUB-CONTRACTORS DRAWINGS AND DETAILS.

LEGEND

- PROPOSED SIGNAL POLE - 114mm DIA.
- PROPOSED TWO ASPECT PEDESTRIAN LIGHT SIGNAL WITH LED HEADS
- PROPOSED SIGNAL POLE RETENSION SOCKET
- PROPOSED SIGNAL POLE RETENSION SOCKET
- CLIENT MANIPULAR
- CONTROLLER UNIT
- SIGNAL DUCTING - ORANGE IN COLOUR - 1X100 TRAFFIC DUCT
- ACCESS CHAMBER 450 X 450 (SEE STANDARD DETAILS)
- ⊠ TRAFFIC DUCTS MANHOLE (EIRCOM JB4)
- ⊠ TRAFFIC DUCTS MANHOLE (EIRCOM JB1)

NOTES

1. ALL ROADMARKINGS TO BE IN ACCORDANCE WITH D.O.E. TRAFFIC SIGNS MANUAL & TA 78/79.
2. ALL TRAFFIC SIGNS TO BE IN ACCORDANCE WITH D.O.E TRAFFIC SIGNS MANUAL & TA 78/79.
3. THE EXACT POSITION OF ALL TRAFFIC SIGNS, TRAFFIC SIGNAL EQUIPMENT, CHAMBERS AND POST BASES IS TO BE DETERMINED ON SITE BY THE EMPLOYERS SITE REPRESENTATIVE AND DUBLIN CITY COUNCILS ROADS AND TRAFFIC DEPARTMENT.



REV	DESCRIPTION	BY	CHK	DATE
P04	ISSUED FOR PLANNING	RK		21/07/22
P03	DRAFT ISSUE TO SDCC	RK		20/07/22
P02	UPDATED ROAD MARKINGS	RK		15/07/22
REV	DESCRIPTION	BY	CHK	DATE

CLIENT
BCEI

PROJECT
DC CAMPUS, GRANGECASTLE

DRAWING TITLE
ROAD MARKINGS LAYOUT

PINNACLE
CONSULTING ENGINEERS

PROJENOR COURT,
61A PATRICK STREET,
DUBLIN 6,
IRELAND
TEL: +353 1 231 1041
WWW.PINNACLEENGINEERS.COM
WELWYN GARDEN CITY | NORWICH | LONDON | THE HAGUE

DRAWING STATUS
PLANNING

SCALE @ A1	DATE	DRAWN BY	CHECKED
1:250	JUNE 22	RK	RK

DWG NO. **EDCUB-PIN-3.0-XX-DR-D-0003-SP04**