

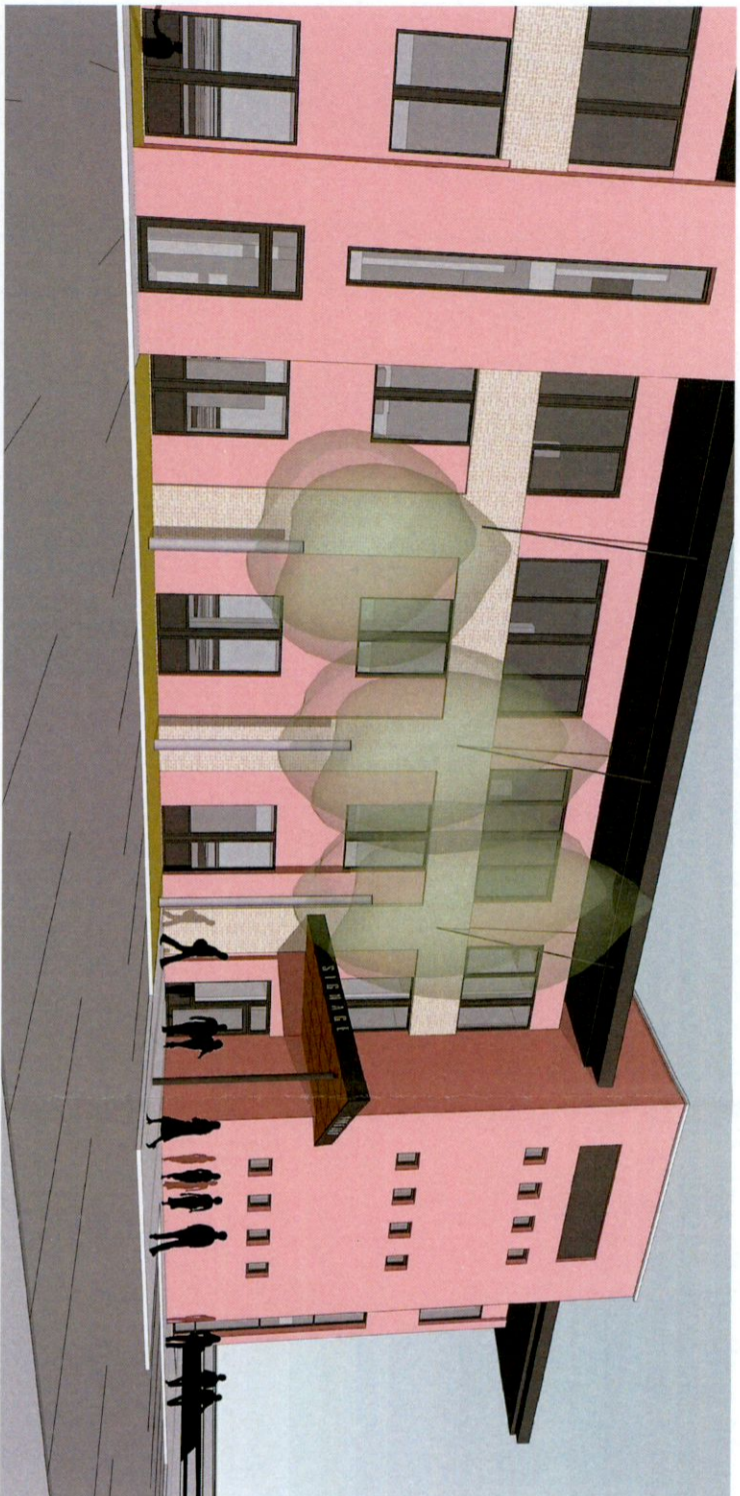
01 Proposed Canopy

The proposed canopy will provide a focal point to highlight the entrance to the south core of Block 2 from the carpark.

Its splayed form gives the canopy a strong visual presence. While the dark grey colour of the canopy fascia and slender grounding column, links it to the existing building roof and window frames.

A timber soffit adds a warm, welcoming element.

We are proposing 2no. integrated signage locations on the fascias of the canopy, which are readily visible when approaching the entrance from the north or south direction.



1. Proposed Concept View, looking south east



2. Proposed Concept View, looking north east

