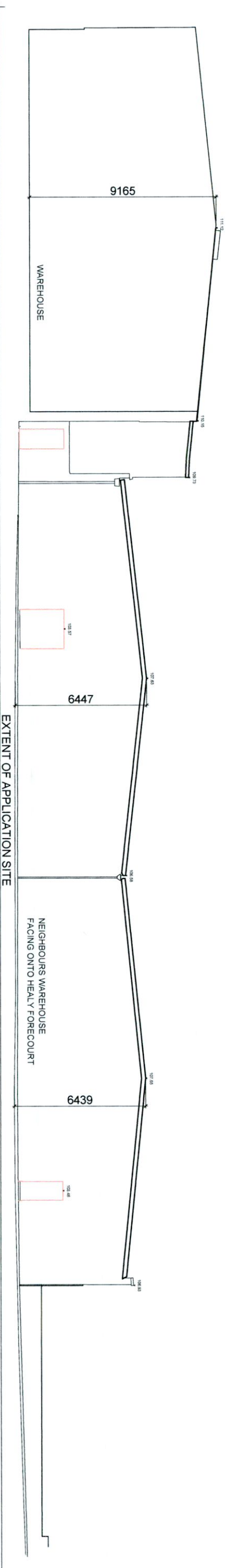


01 EXISTING SECTION AA THROUGH WAREHOUSE BUILDING (1:100@A1, 1:200@A3)



02 EXISTING WEST ELEVATION OF NEIGHBOUR'S WAREHOUSE BUILDINGS (1:100@A1, 1:200@A3)

SPECIFICATION AND MATERIALS OF EXISTING OFFICE BUILDING:

- PITCHED ROOF:**
SHALLOW PROFILE METAL ROOF ON STEEL TRUSSES.
PLASTER BOARD AND SKIM TO UNDERSIDE OF FIRST FLOOR CEILING JOISTS.
- FASCIA AND SOFFIT:**
POWDER COATED ALUMINIUM FASCIA AND AND SOFFIT.
- EXTERNAL RAINWATER GOODS:**
POWDER COATED ALUMINIUM RAIN WATER GOODS.
- EXTERNAL WALLS:**
CAVITY WALL CONSTRUCTION WITH BRICK (RED MULTI BRICK) OUTER LEAF PROFILE METAL SHEETING ABOVE FIRST FLOOR WINDOW HEAD LEVEL.
PLASTER BOARD AND SKIM TO INTERNAL FACE OF EXTERNAL WALL.
- EXTERNAL WINDOWS AND DOORS:**
WINDOWS ARE PVC/POWDER COATED ALUMINIUM ON PC CONCRETE CILLS.
EXTERNAL DOORS ARE POWDERCOATED ALUMINIUM/HARDWOOD TIMBER PAINTED.
- INTERNAL WALLS:**
100MM/215MM CONCRETE BLOCKWORK WALLS WITH 12MM PLASTER TO BOTH SIDES OR 100MM SW/TIMBER STUD/METAL STUDS WITH 12.5MM PLASTER BOARD AND SKIM TO EACH SIDE.

- CONCRETE SLAB OR T&G BOARDING ON TIMBER/METAL FLOOR JOISTS WITH 12.5MM PLASTER BOARD AND SKIM TO UNDERSIDE IN OFFICE AREAS.**
- GROUND FLOOR:**
CONC FLOOR SLAB ON INSULATION ON DPM ON 50MM BLINDING ON WELL COMPACTED HARDCORE.

SPECIFICATION AND MATERIALS OF EXISTING WAREHOUSE BUILDING:

- PITCHED ROOF:**
SHALLOW PROFILE METAL ROOF ON STEEL TRUSSES.
- FASCIA AND SOFFIT:**
POWDER COATED ALUMINIUM FASCIA AND AND SOFFIT.
- EXTERNAL RAINWATER GOODS:**
POWDER COATED ALUMINIUM RAIN WATER GOODS.
- EXTERNAL WALLS:**
CAVITY WALL CONSTRUCTION WITH PAINTED WET DASH TO BLOCKWORK OUTER LEAF PROFILE METAL SHEETING AT HIGH LEVEL.
PLASTER / FAIRFACED BLOCKWORK TO INTERNAL FACE OF EXTERNAL WALL.
- EXTERNAL WINDOWS AND DOORS:**
WINDOWS ARE PVC/POWDER COATED ALUMINIUM ON PC CONCRETE CILLS.
ROOF LIGHTS TO WAREHOUSE BUILDINGS ARE PERSPEX OR SIMILAR
EXTERNAL DOORS ARE POWDERCOATED ALUMINIUM/HARDWOOD TIMBER PAINTED.
- INTERNAL WALLS:**
100MM/215MM CONCRETE BLOCKWORK WALLS WITH 12MM PLASTER TO BOTH SIDES OR 100MM SW/TIMBER STUD/METAL STUDS WITH 12.5MM PLASTER BOARD AND SKIM TO EACH SIDE.

- GROUND FLOOR:**
CONC FLOOR SLAB ON DPM ON 50MM (INSULATION LEVELS IF ANY TO BE CONFIRMED).
BLINDING ON WELL COMPACTED HARDCORE.