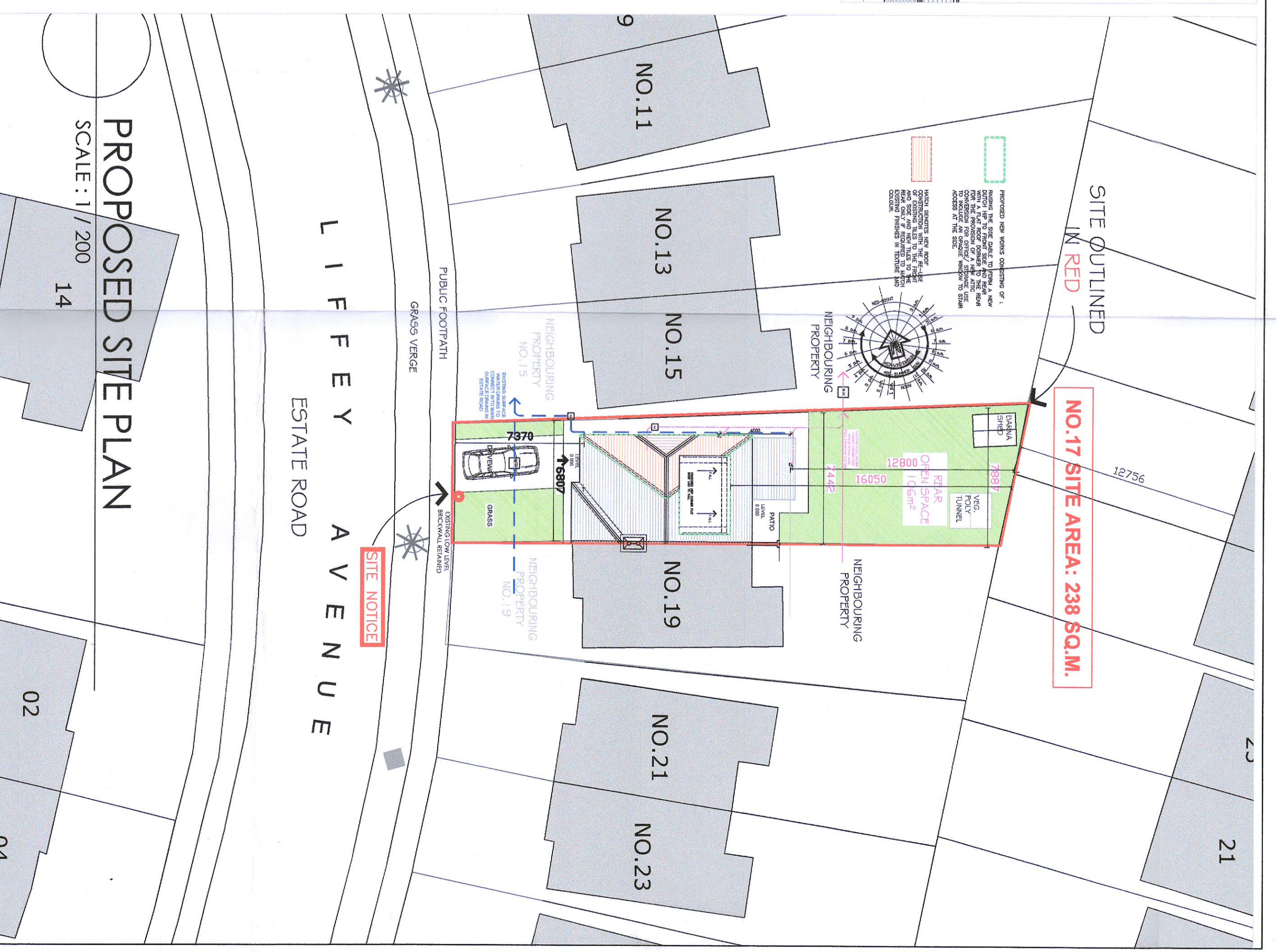
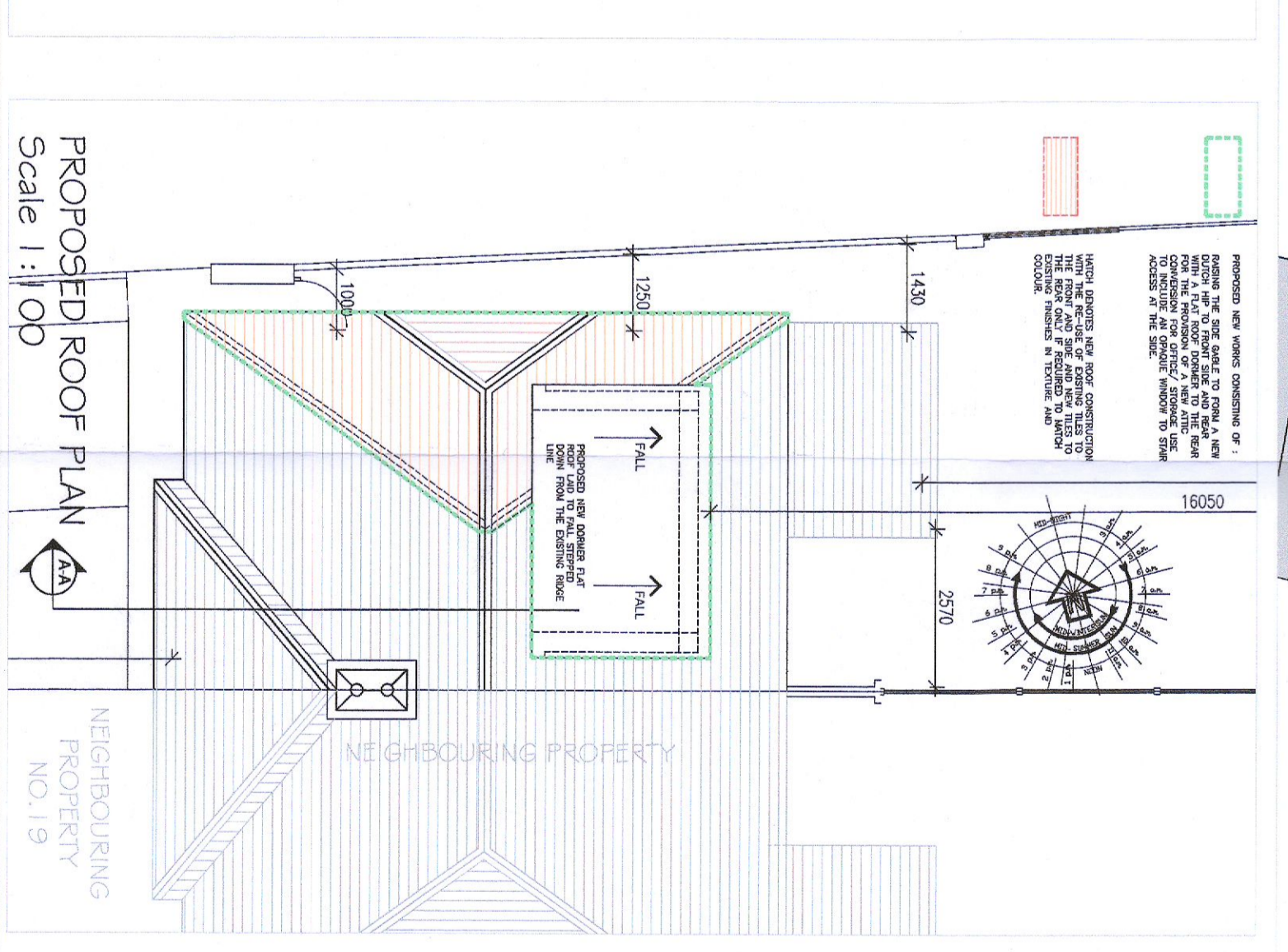


**SCHEDULE OF AREAS**

Area	Existing	Proposed
GROUND FLOOR - UNCHANGED		
ENTRANCE HALL	7.20 m <sup>2</sup>	7.20 m <sup>2</sup>
W.C.	1.20 m <sup>2</sup>	1.20 m <sup>2</sup>
LIVING ROOM	16.13 m <sup>2</sup>	16.13 m <sup>2</sup>
SITTING ROOM	10.48 m <sup>2</sup>	10.48 m <sup>2</sup>
KITCHEN / DINING ROOM	16.12 m <sup>2</sup>	16.12 m <sup>2</sup>
GROUND FLOOR TOTAL	53.85 m <sup>2</sup>	53.85 m <sup>2</sup>
FIRST FLOOR - AREA UNCHANGED		
LANDING	6.35 m <sup>2</sup>	6.35 m <sup>2</sup>
BEDROOM 01	14.42 m <sup>2</sup>	14.42 m <sup>2</sup>
ENSUITE	2.76 m <sup>2</sup>	2.76 m <sup>2</sup>
BATHROOM	3.67 m <sup>2</sup>	3.67 m <sup>2</sup>
BEDROOM 02	12.88 m <sup>2</sup>	12.88 m <sup>2</sup>
BEDROOM 03	3.35 m <sup>2</sup>	3.35 m <sup>2</sup>
HP	0.41 m <sup>2</sup>	0.41 m <sup>2</sup>
FIRST FLOOR TOTAL	43.71 m <sup>2</sup>	43.71 m <sup>2</sup>
ATTIC CONVERSION - PROPOSED		
LANDING	4.35 m <sup>2</sup>	4.35 m <sup>2</sup>
HOME OFFICE/STORAGE	17.75 m <sup>2</sup>	17.75 m <sup>2</sup>
NEW ATTIC FLOOR TOTAL	22.10 m <sup>2</sup>	22.10 m <sup>2</sup>
EXISTING DWELLING		
TOTAL AREA = 53.85 + 43.71 m <sup>2</sup>		97.56 m <sup>2</sup>
PROPOSED DWELLING		
TOTAL AREA = 53.85 + 43.71 m <sup>2</sup> + 22.10 m <sup>2</sup>		123.59 m <sup>2</sup>



**Project:** ATTIC CONVERSION & RAISING OF GABLE TO FORM NEW DUTCH HIP, 17 LIFFEY AVENUE, LIFFEY VALLEY PARK, LUCAN, CO. DUBLIN.

**Drawing Title:** PROPOSED SITE PLAN, GRD, FIRST & ATTIC FLOOR PLANS, ELEVATIONS & SECTION A-A

**Client:** EOGHAN CLERKIN

**Drawn by:** C.M.

**Checked by:** D.O.B.

**Date:** 2022-06-03

**Scale:** 1:100 / 1:200

**Drawing No.:** 200 - PA - 002

**Rev.:** B

**Project Details:**

Rev.	Date	Description
B	JUNE 2022	ISSUED FOR PLANNING
A	MAY 2022	ISSUED FOR COMMENT
Rev.	Date	Description
		April

**Company:** CJM Architectural & Construction Consultants, 41 Clarendon Court, Clarendon, Leixlip, Co. Kildare.