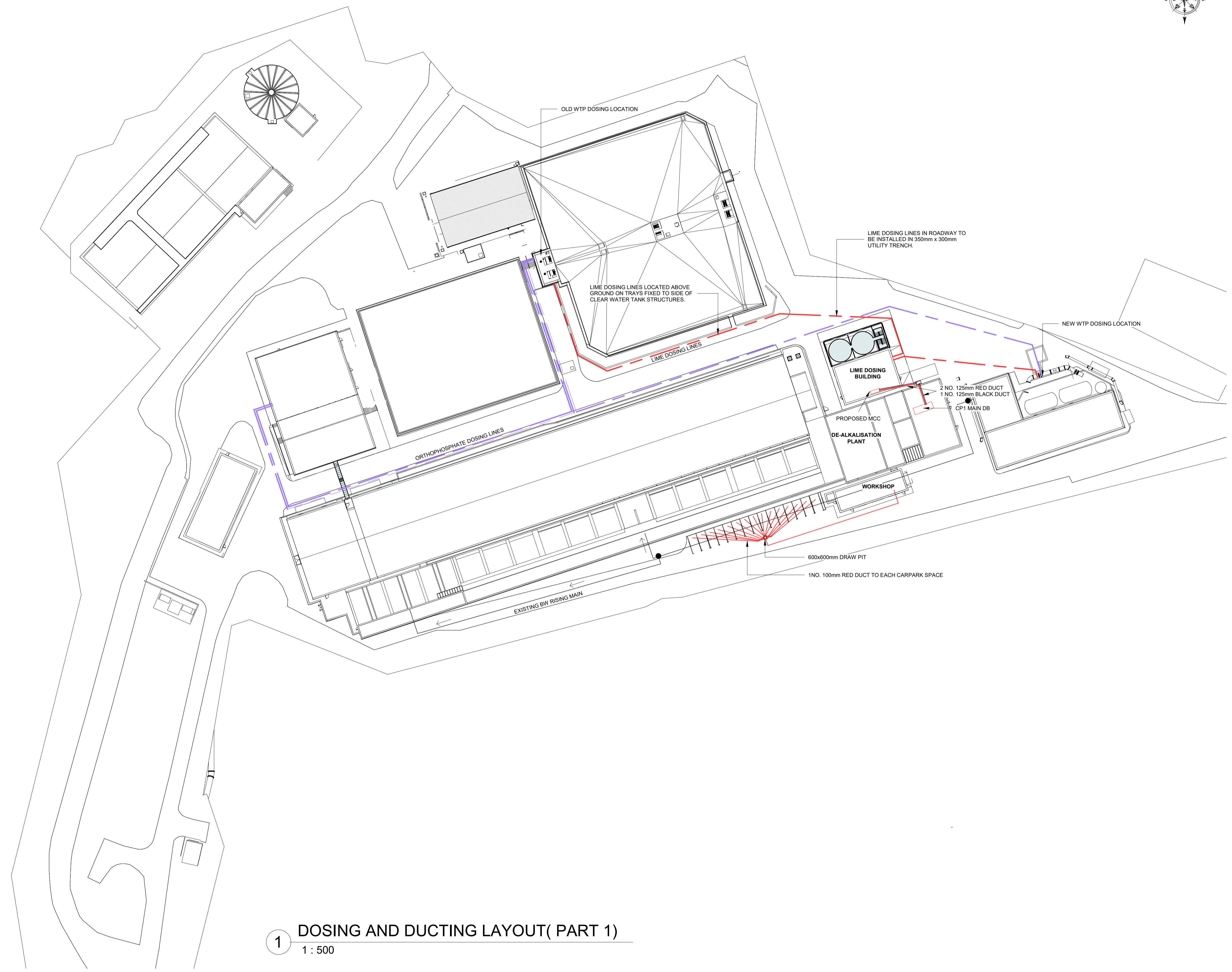


LEGEND:

ORTHOPHOSPHATE DOSING LINE	
LIME DOSING LINE	
ELECTRICAL DUCTING	

- NOTES:**
1. ALL DIMENSIONS ARE IN METRES (M) UNLESS NOTED OTHERWISE.
 2. ALL LEVELS ARE IN METRES (M) AND RELATE TO THE ORDNANCE SURVEY DATUM MALIN HEAD.
 3. COORDINATES CONDUCTED TO ITM SYSTEM.
 4. THE PROPOSED DEVELOPMENT SHALL MAKE PROVISION FOR THE CHARGING OF ELECTRIC VEHICLES. 100% OF SURFACE CAR PARKING SPACES MUST BE PROVIDED WITH ELECTRICAL DUCTING AND TERMINATION POINTS TO ALLOW FOR THE PROVISION OF FUTURE CHARGING POINTS, AND 10% OF SURFACE CAR PARKING SPACES FOR THE PROPOSED AND EXISTING DEVELOPMENT MUST BE PROVIDED WITH ELECTRIC VEHICLE CHARGING POINTS INITIALLY. DETAILS OF HOW IT IS PROPOSED TO COMPLY WITH THESE REQUIREMENTS INCLUDING DETAILS OF THE DESIGN OF, AND SIGNAGE FOR, THE ELECTRIC CHARGING POINTS (WHERE THEY ARE NOT IN AREAS TO BE TAKEN IN CHARGE) SHALL BE SUBMITTED TO, AND AGREED IN WRITING WITH, THE PLANNING AUTHORITY PRIOR TO COMMENCEMENT OF DEVELOPMENT.



P02	14/07/2022	ISSUED FOR DESIGN SUBMISSION	CW	KK	SM
P01	21/12/2021	ISSUED FOR DESIGN SUBMISSION	CW	CF	SM
REV	DATE	DESCRIPTION	DRW	CHK	APP

DESIGN STAGE

COPYRIGHT RESERVED - THIS DRAWING IS NOT TO BE USED FOR A PURPOSE OTHER THAN THAT FOR WHICH IT HAS BEEN ISSUED BY GLAN AGUA LTD. NOR IS IT TO BE COPIED OR REPRODUCED IN ANY MANNER WITHOUT WRITTEN CONSENT.

CLIENT



IRISH WATER
 Colvill House,
 24-26 Talbot Street,
 Dublin 1,
 Tel. 1890 278 278 Web. www.water.ie

PROJECT

**ECI LOT 1A WATER LEIXLIP
 PHASE 2 UPGRADE**



GLAN AGUA
 MOTAENGL GROUP

Glan Agua Ltd.,
 Railway House,
 Station Road,
 Loughrea,
 Co. Galway,
 IRELAND

Tel: +353 (0)909 630 301
 Fax: +353 (0)909 630 300
 e-mail: info@glanagua.com
 web: www.glanagua.com

TITLE

**LEIXLIP PHASE 2 UPGRADE
 DOSING AND DUCTING
 LAYOUT (SHEET 1 OF 2)**

SCALES	DRAWN	CHECKED	APPROVED
As indicated	DH	KB	SM
	DATE	DATE	DATE
	21/12/2021	21/12/2021	21/12/2021

DRAWING No.	STATUS	REVISION
11118-GAL-LP2-XX-DR-W-3006	S4	P02

1 DOSING AND DUCTING LAYOUT(PART 1)
 1 : 500