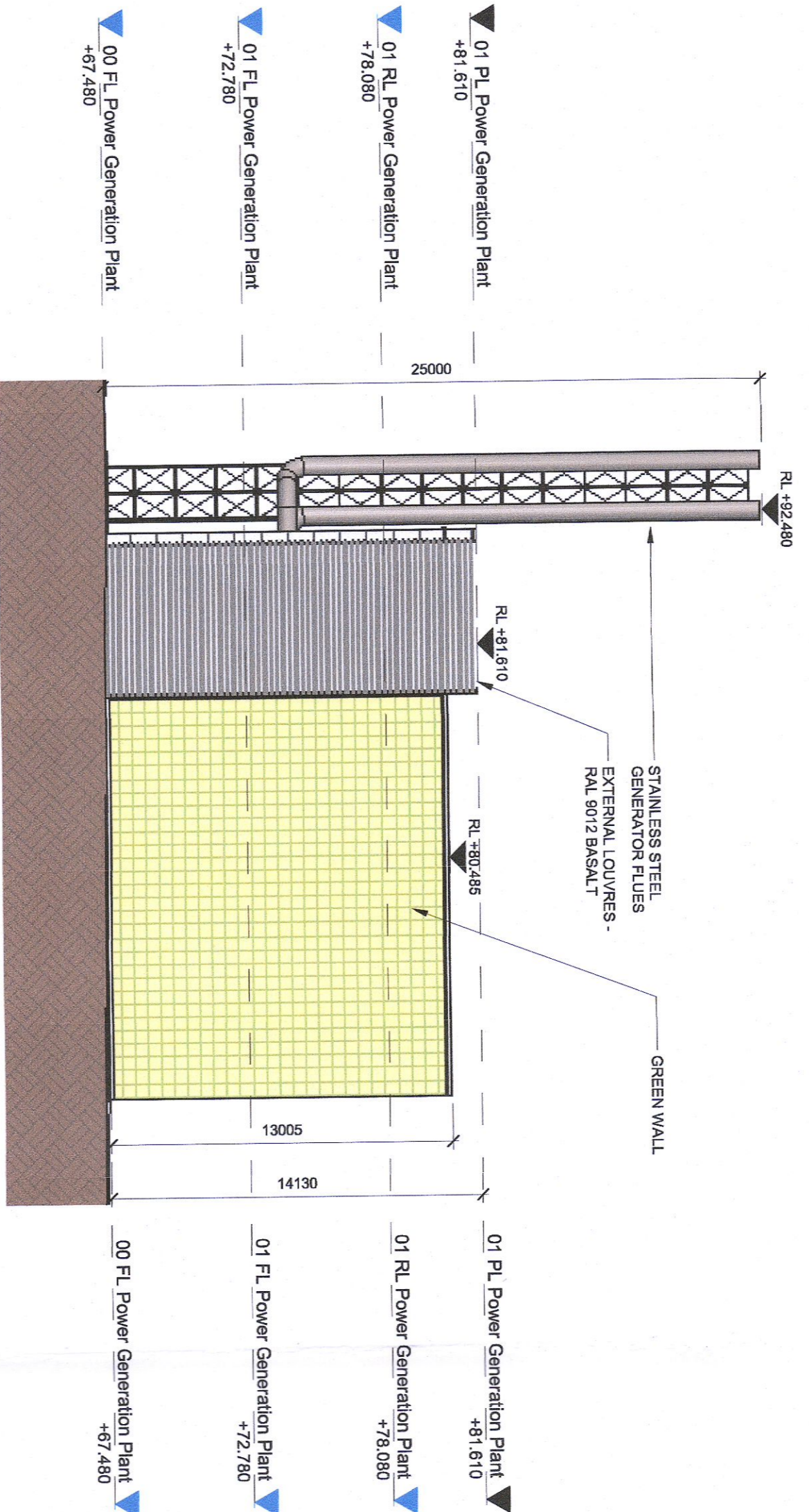


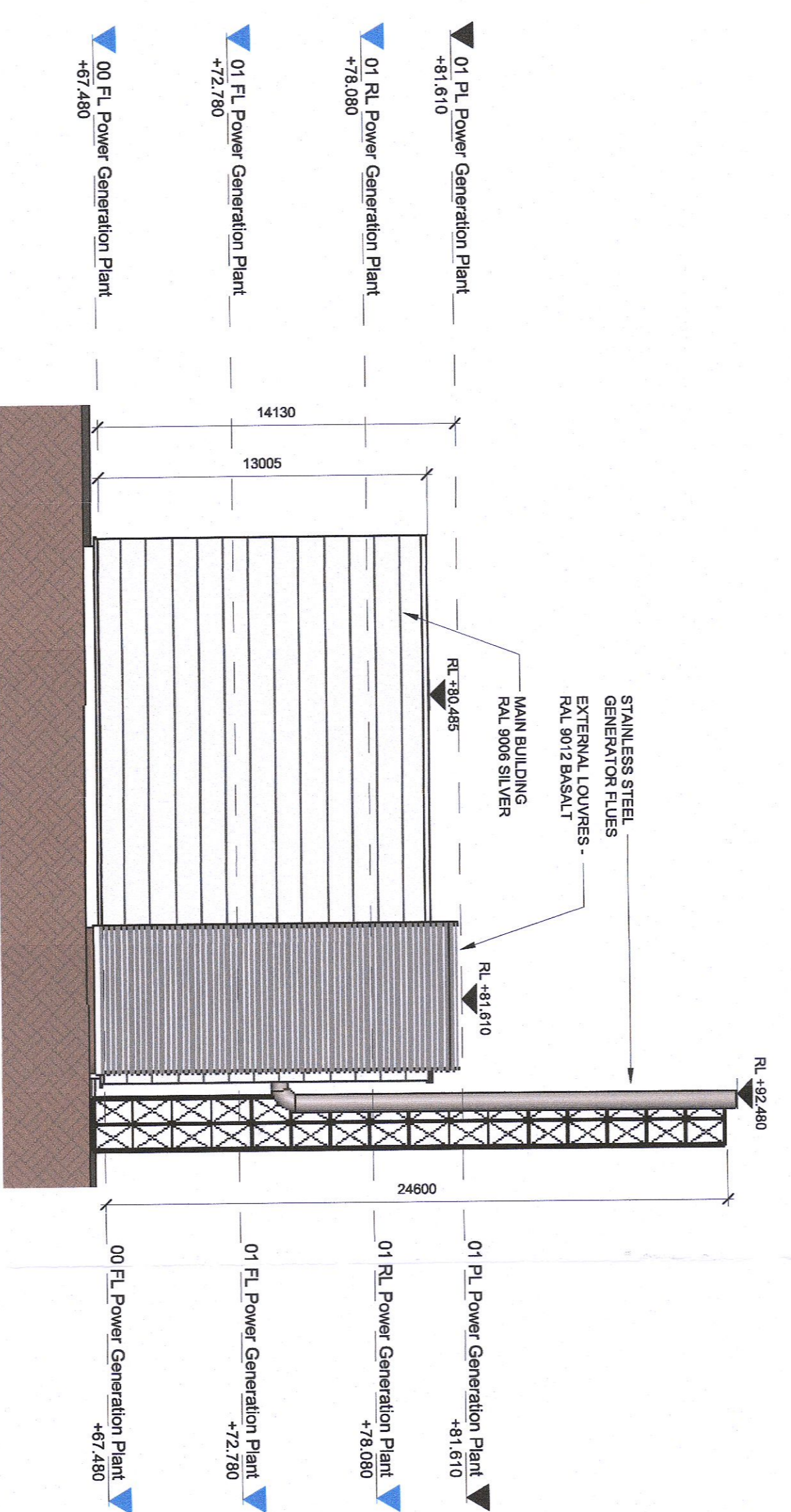
PERMITTED GAS POWER PLANT 01 SUBJECT TO CONDITION NO.3 OF REG. REF. SD21A0042 (NO CHANGE) - WEST ELEVATION 4

SCALE: 1:200



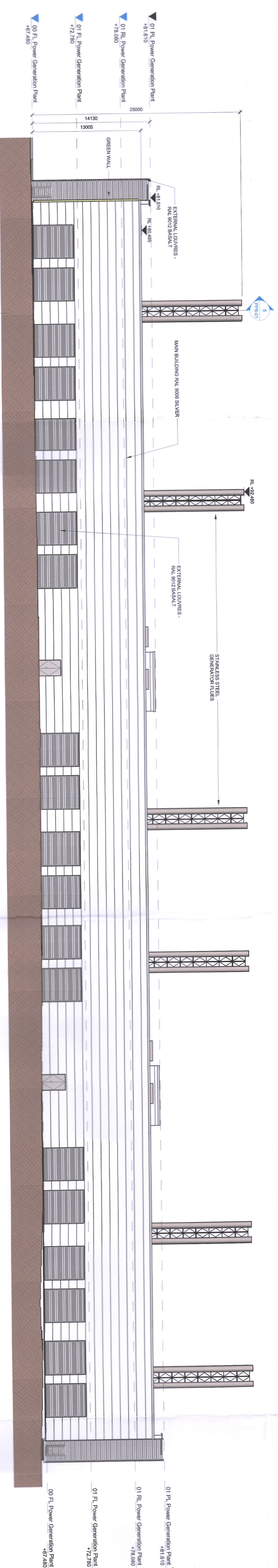
PERMITTED GAS POWER PLANT 01 SUBJECT TO CONDITION NO.3 OF REG. REF. SD21A0042 (NO CHANGE) - SOUTH ELEVATION 3

SCALE: 1:200



PERMITTED GAS POWER PLANT 01 SUBJECT TO CONDITION NO.3 OF REG. REF. SD21A0042 (NO CHANGE) - NORTH ELEVATION 2

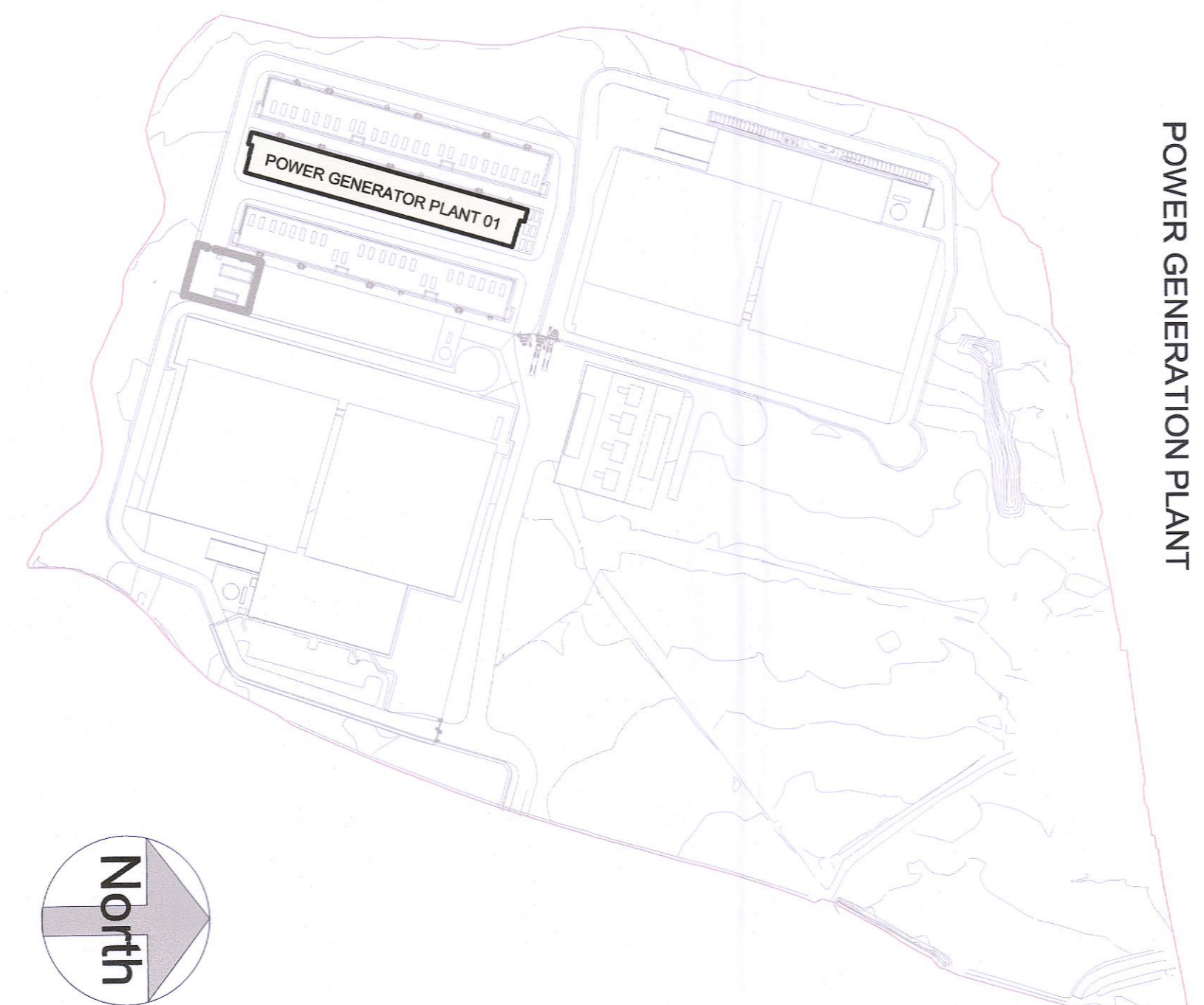
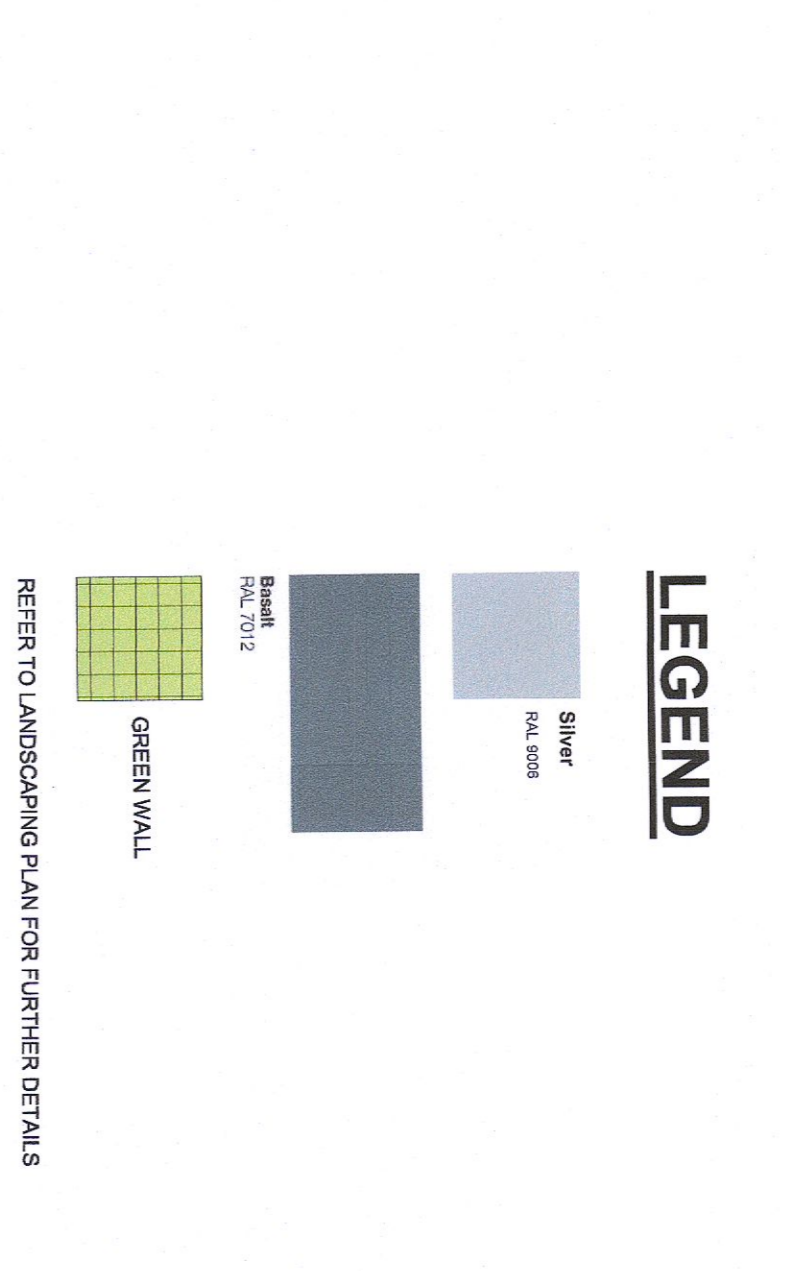
SCALE: 1:200



PERMITTED GAS POWER PLANT 01 SUBJECT TO CONDITION NO.3 OF REG. REF. SD21A0042 (NO CHANGE) - EAST ELEVATION 1

SCALE: 1:200

**LEGEND**  
POWER GENERATION PLANT



REV	DATE	DESCRIPTION	BY	CHK	APP
001	20/02/2022	ISSUED FOR CONSULTATION PERMITS			
002	20/02/2022	ISSUED FOR CONSULTATION PERMITS			

ISSUED FOR PLANNING APPROVAL

**Henry J Lyons**  
CONSULTING ENGINEERS

**ethos**  
ENGINEERING

**BCEI**  
BUILDING CONSULTANTS ENGINEERS

**edgeconnext**

**Henry J Lyons**  
CONSULTING ENGINEERS

**Pinnacle**  
CONSULTING ENGINEERS

**LEGEND**  
POWER GENERATION PLANT

**Henry J Lyons**  
CONSULTING ENGINEERS