

Planning Permission PV Proposal GSLS

Summary;

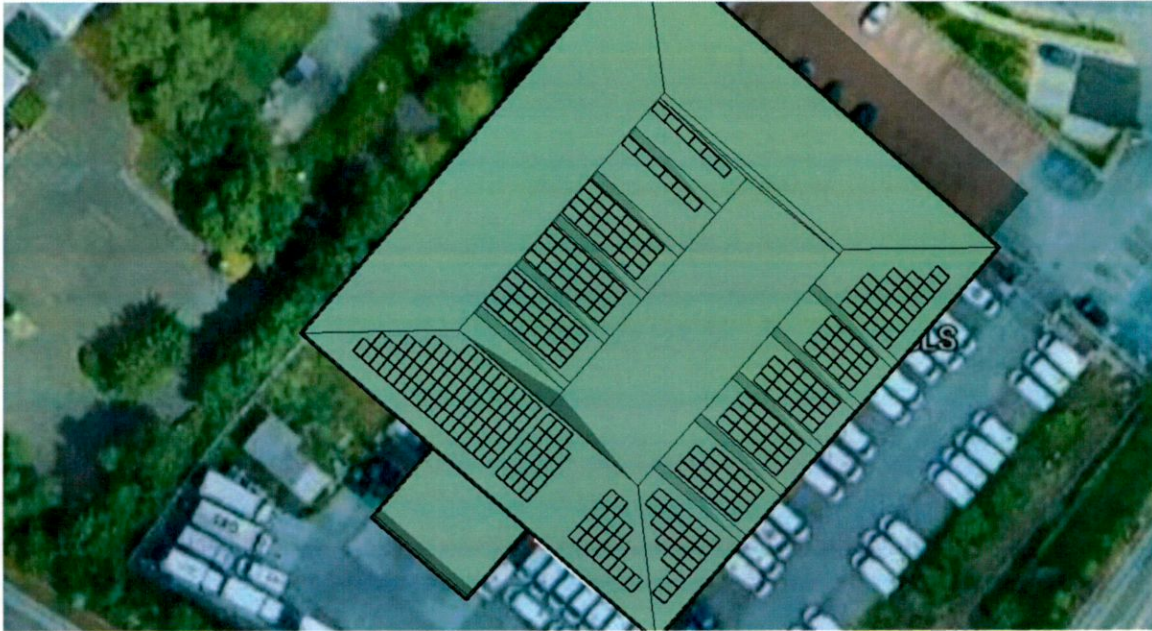
- Total PV Module count = 312
- South West Orientation = 106 at 40 Degrees
- South East Orientation = 206 at minus 50 Degrees
- PV Modules = Trina 400w TSM-DE09.08 Vertex 1754 mm
x 1096 mm x 30 mm (L x W x H)
- Weight per module = 21.0 KG
- Aperture area per PV module = 1.922 m²
- Total PV Module aperture area on site = 599.7 m²
- PV Module output (Wattage) = 400w
- Total PV Output (KWp) = 124.8 KWp



Killanne, Rathnure,
Enniscorthy, Co. Wexford,
Ireland, Y21 W523

T: + 353 (0)53 9256804
E: info@solarelectric.ie

Full Site Overview



Bank A/C Details:

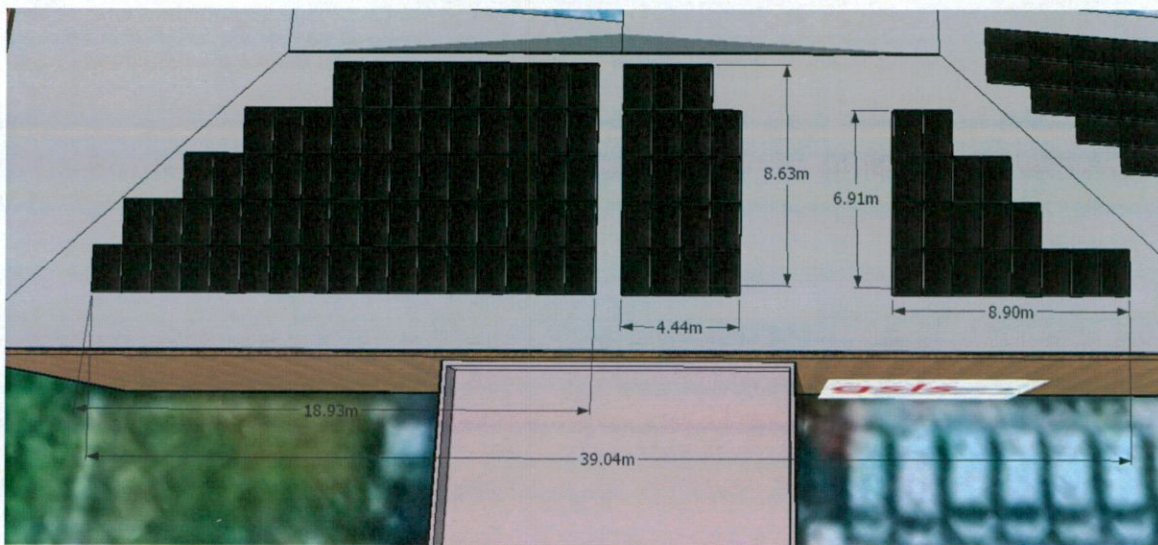
AIB Bank, Slaney Place, Enniscorthy, Co. Wexford
A/C No: 37618076 | Sort Code: 93-34-14
IBAN: IE34 AIBK 9334 1437 6180 76 | BIC: AIBKIE2D

www.solarelectric.ie

Solar Electric is a trading name of Rookery Consulting Limited
Reg. No. 488170 | Directors: T. Foley, R. Goss | VAT No. IE 9759797L



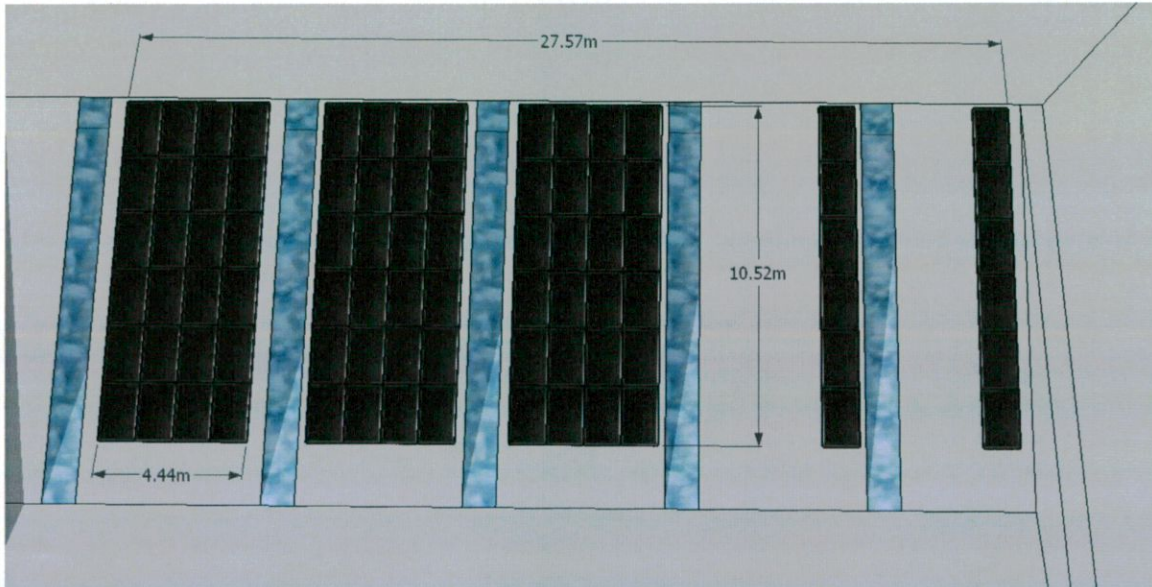
Dimensional Module Drawings – Sectional Areas from South West Facing Roof 106 Panels



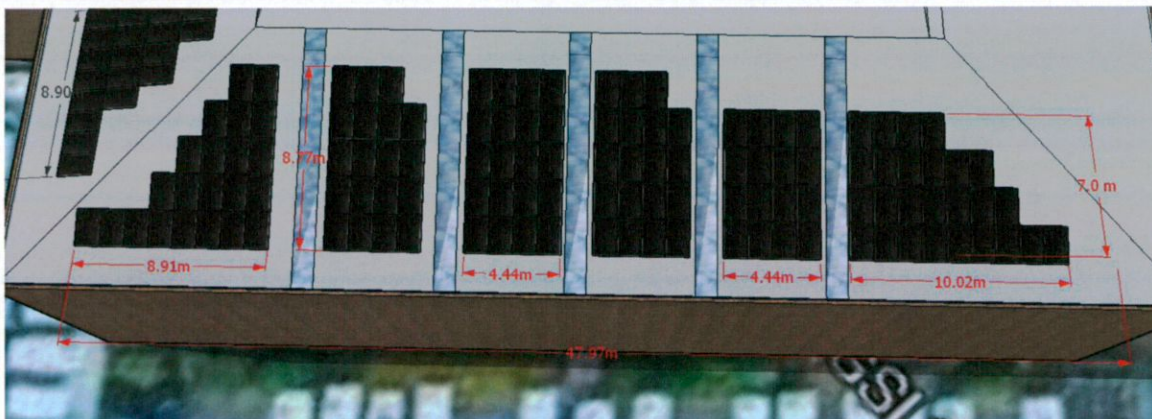
Killanne, Rathnure,
Enniscorthy, Co. Wexford,
Ireland, Y21 W523

T: + 353 (0)53 9256804
E: info@solarelectric.ie

Dimensional Module Drawings – Sectional Areas from South East Facing Roof 84 Panels



Dimensional Module Drawings – Sectional Areas from Second South East Facing Roof 122 Panels



Bank A/C Details:

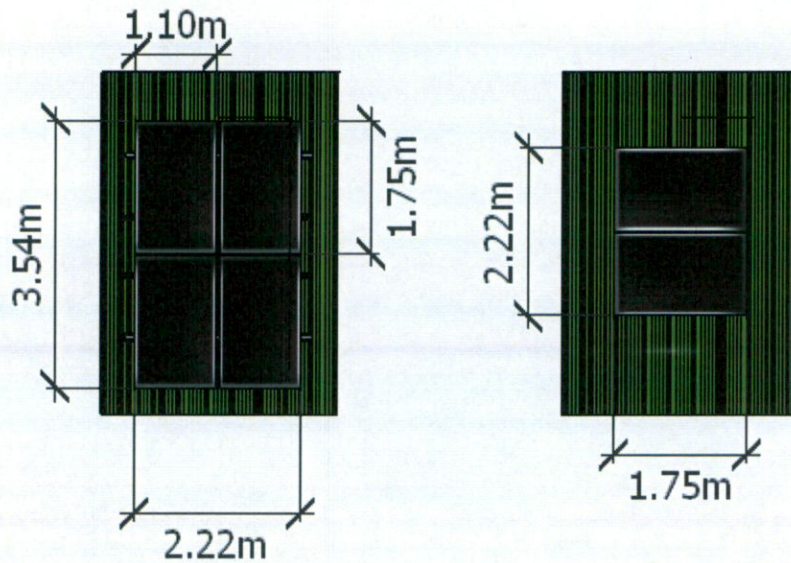
AIB Bank, Slaney Place, Enniscorthy, Co. Wexford
A/C No: 37618076 | Sort Code: 93-34-14
IBAN: IE34 AIBK 9334 1437 6180 76 | BIC: AIBKIE2D

www.solarelectric.ie

Solar Electric is a trading name of Rookery Consulting Limited
Reg. No. 488170 | Directors: T. Foley, R.Goss | VAT No.IE 9759797L



Trapazodial Install (Portrait - Landscape)



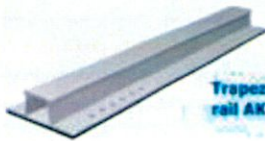
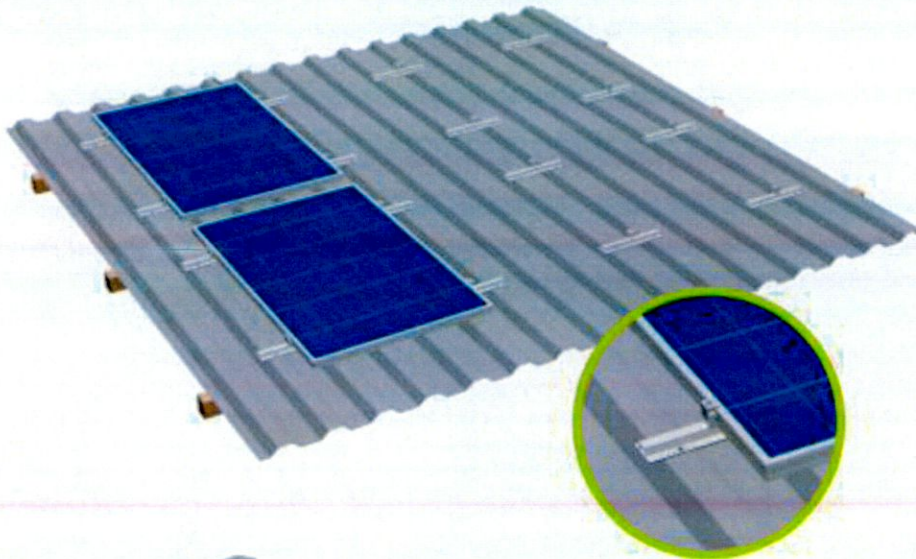
Bank A/C Details:

AIB Bank, Slaney Place, Enniscorthy, Co. Wexford
A/C No: 37618076 | Sort Code: 93-34-14
IBAN: IE34 AIBK 9334 1437 6180 76 | BIC: AIBKIE2D

The below shows the product data and a sample of a previous trapezoidal system we install on a similar roof area as proposed on this project.



System for trapezoidal sheet and corrugated sheet roofs
Mounting using trapezoidal sheet metal rails



Trapezoidal sheet metal rail AK I=395 mm

Application:
Trapezoidal and corrugated sheet metal



Killanne, Rathnure,
Enniscorthy, Co. Wexford,
Ireland, Y21 W523

T: + 353 (0)53 9256804
E: info@solarelectric.ie



Bank A/C Details:

AIB Bank, Slaney Place, Enniscorthy, Co. Wexford
A/C No: 37618076 | Sort Code: 93-34-14
IBAN: IE34 AIBK 9334 1437 6180 76 | BIC: AIBKIE2D

www.solarelectric.ie

Solar Electric is a trading name of Rookery Consulting Limited
Reg. No. 488170 | Directors: T. Foley, R.Goss | VAT No.IE 9759797L





Killanne, Rathnure,
Enniscorthy, Co.Wexford,
Ireland, Y21 W523

T: + 353 (0)53 9256804
E: info@solarelectric.ie

Bank A/C Details:

AIB Bank, Slaney Place, Enniscorthy, Co. Wexford
A/C No: 37618076 | Sort Code: 93-34-14
IBAN: IE34 AIBK 9334 1437 6180 76 | BIC: AIBKIE2D

www.solarelectric.ie

Solar Electric is a trading name of Rookery Consulting Limited
Reg. No. 488170 | Directors: T. Foley, R.Goss | VAT No.IE 9759797L

