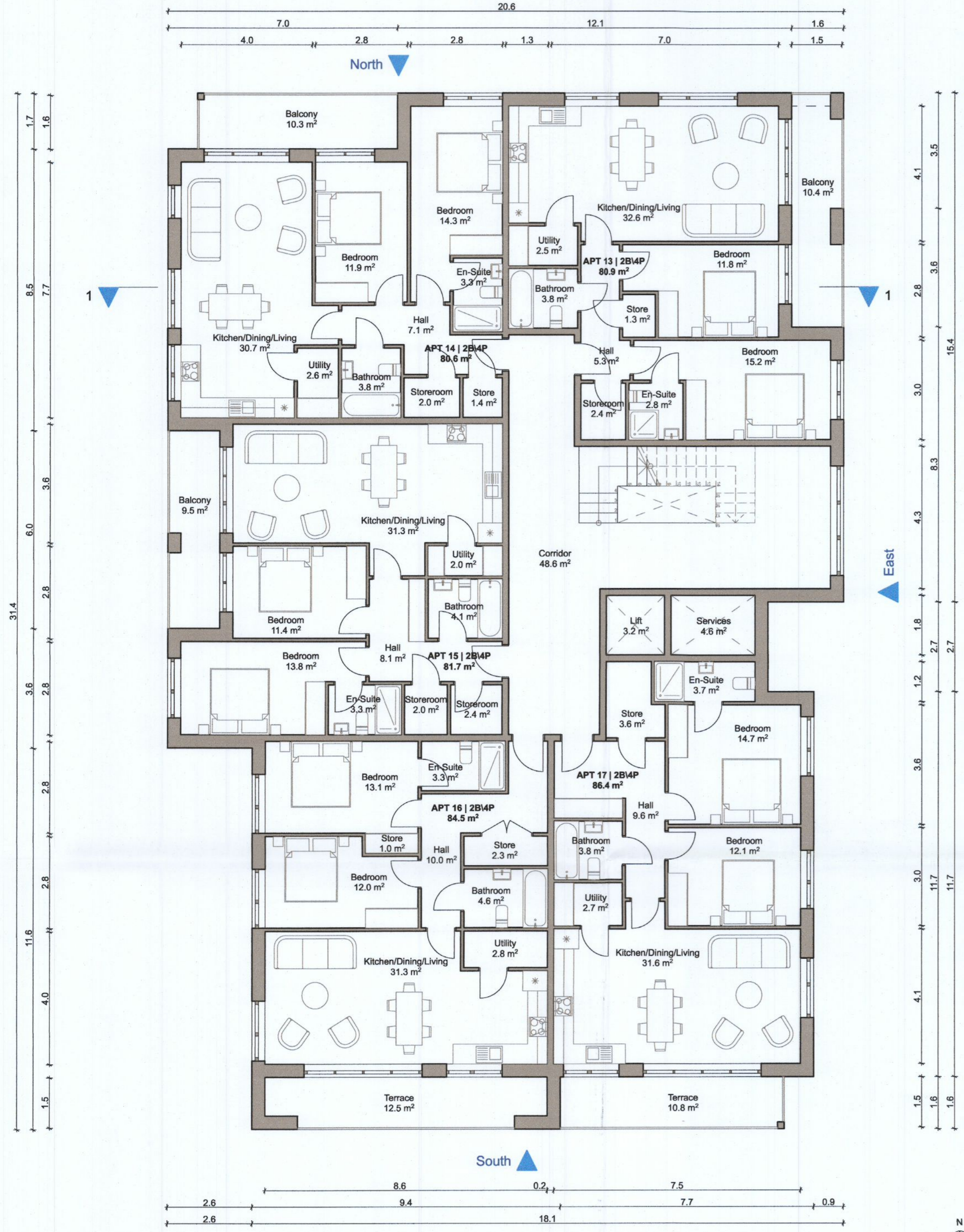
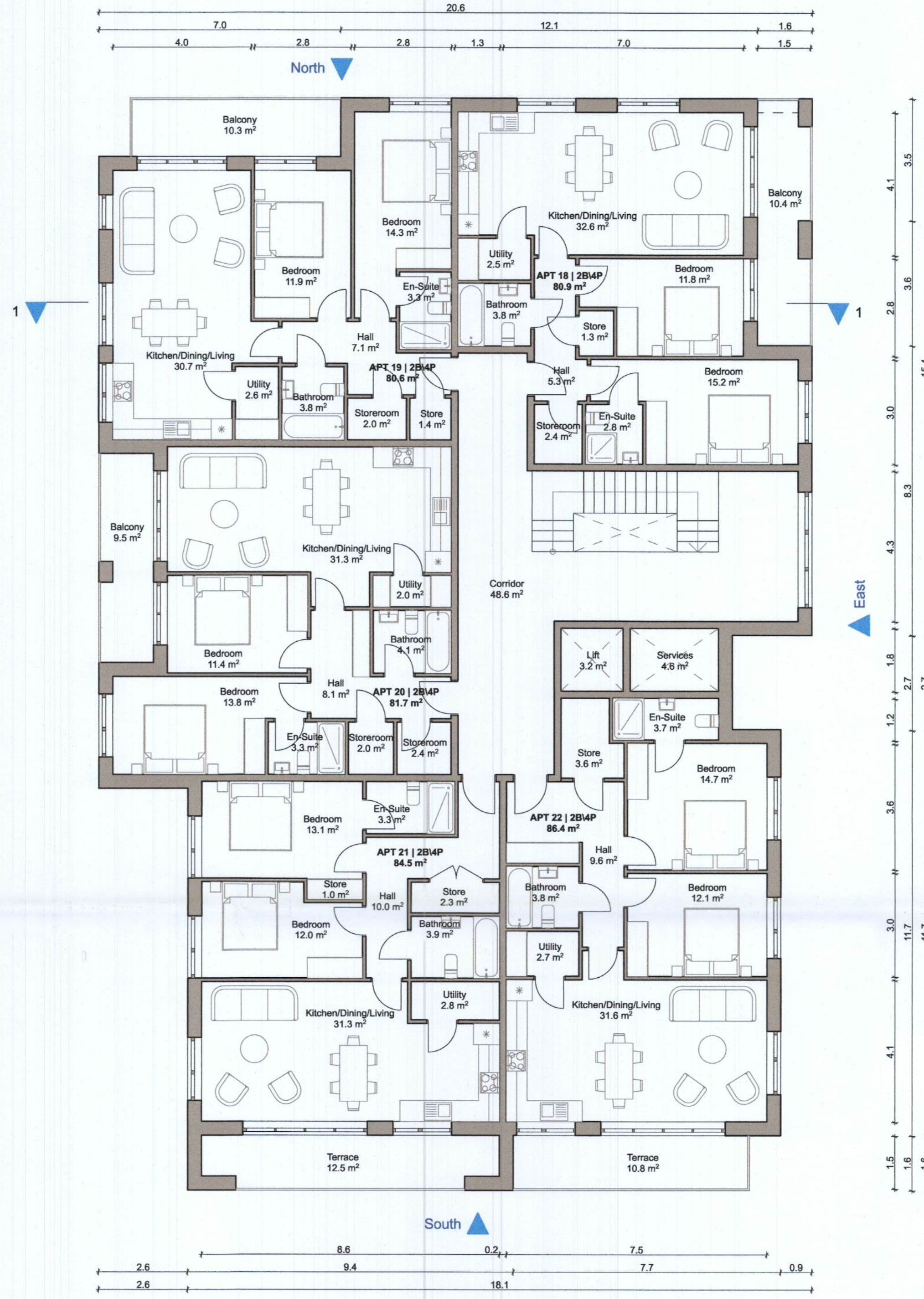


**APARTMENT BLOCK B**  
Total Number of Units - 22 | Total GFA - 1,952.4 m<sup>2</sup>



02-Second Floor



03-Third Floor

Apartment 13 & 18			
Gross Internal Area			
Area Type	Proposed Area	DoHPCLG Area Min.	
2 Bed Unit / 4 Person	80.9 m <sup>2</sup>	73.0 m <sup>2</sup>	
Space Provision & Room Sizes			
Area Type	Proposed Area	DoHPCLG Area Min.	
Aggregate Bedroom Area	27.0 m <sup>2</sup>	24.4 m <sup>2</sup>	
Aggregate Living Area	32.6 m <sup>2</sup>	30.0 m <sup>2</sup>	
Storage Provision			
Area Type	Proposed Area	DoHPCLG Area Min.	
Storage	6.2 m <sup>2</sup>	6.0 m <sup>2</sup>	

Apartment 16 & 21			
Gross Internal Area			
Area Type	Proposed Area	DoHPCLG Area Min.	
2 Bed Unit / 4 Person	84.5 m <sup>2</sup>	73.0 m <sup>2</sup>	
Space Provision & Room Sizes			
Area Type	Proposed Area	DoHPCLG Area Min.	
Aggregate Bedroom Area	25.1 m <sup>2</sup>	24.4 m <sup>2</sup>	
Aggregate Living Area	31.3 m <sup>2</sup>	30.0 m <sup>2</sup>	
Storage Provision			
Area Type	Proposed Area	DoHPCLG Area Min.	
Storage	6.1 m <sup>2</sup>	6.0 m <sup>2</sup>	

Apartment 14 & 19			
Gross Internal Area			
Area Type	Proposed Area	DoHPCLG Area Min.	
2 Bed Unit / 4 Person	80.6 m <sup>2</sup>	73.0 m <sup>2</sup>	
Space Provision & Room Sizes			
Area Type	Proposed Area	DoHPCLG Area Min.	
Aggregate Bedroom Area	26.2 m <sup>2</sup>	24.4 m <sup>2</sup>	
Aggregate Living Area	30.9 m <sup>2</sup>	30.0 m <sup>2</sup>	
Storage Provision			
Area Type	Proposed Area	DoHPCLG Area Min.	
Storage	6.0 m <sup>2</sup>	6.0 m <sup>2</sup>	

Apartment 17 & 22			
Gross Internal Area			
Area Type	Proposed Area	DoHPCLG Area Min.	
2 Bed Unit / 4 Person	86.4 m <sup>2</sup>	73.0 m <sup>2</sup>	
Space Provision & Room Sizes			
Area Type	Proposed Area	DoHPCLG Area Min.	
Aggregate Bedroom Area	26.8 m <sup>2</sup>	24.4 m <sup>2</sup>	
Aggregate Living Area	31.6 m <sup>2</sup>	30.0 m <sup>2</sup>	
Storage Provision			
Area Type	Proposed Area	DoHPCLG Area Min.	
Storage	6.3 m <sup>2</sup>	6.0 m <sup>2</sup>	

Apartment 15 & 20			
Gross Internal Area			
Area Type	Proposed Area	DoHPCLG Area Min.	
2 Bed Unit / 4 Person	81.7 m <sup>2</sup>	73.0 m <sup>2</sup>	
Space Provision & Room Sizes			
Area Type	Proposed Area	DoHPCLG Area Min.	
Aggregate Bedroom Area	25.2 m <sup>2</sup>	24.4 m <sup>2</sup>	
Aggregate Living Area	31.3 m <sup>2</sup>	30.0 m <sup>2</sup>	
Storage Provision			
Area Type	Proposed Area	DoHPCLG Area Min.	
Storage	6.4 m <sup>2</sup>	6.0 m <sup>2</sup>	

Total 22 No. of Units	
1 Bed Apartment / 2 Person	Total 6 No. of Units
2 Bed Apartment / 4 Person	Total 16 No. of Units

Refer to Site Plan for:

- Finished floor levels to survey datum
- Orientation
- Handing of type for each unit

Notes

Do not scale from this drawing.  
Use figured dimensions only.  
All errors and omissions to be reported to the Architect.  
This drawing is to be read in conjunction with relevant consultant's drawings.  
All dimensions are in millimetres and all levels are in meters to match Datums unless otherwise noted.

This drawing is for planning purposes only and not for construction.  
This drawing or design may not be reproduced without permission.

NOTES ON FINISHES:

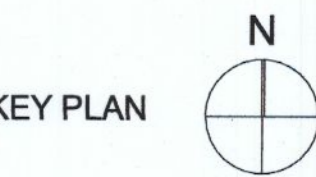
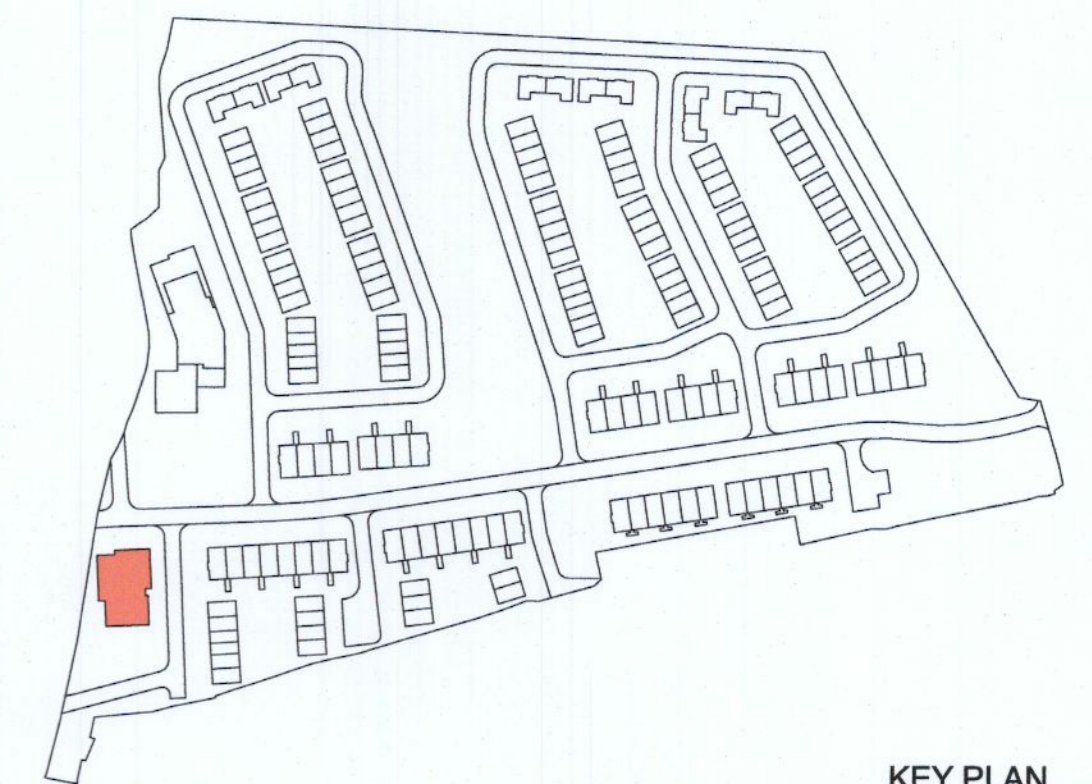
**ROOF:** CAPPING TO BE ALUMINIUM POWDER COATED TO SELECTED COLOUR.

**WALLS:** SELECTED CLAY BRICKWORK WHERE INDICATED OTHERWISE SELECTED SELF-COLOURED RENDER

**JOINERY:** ALL WINDOWS AND DOORS, FRAMES AND LEAFS TO BE ALUMINIUM POWDER COATED TO APPROVED COLOUR OR UPVC OR PAINTED TIMBER TO APPROVED COLOUR. OBSCURE GLAZING WHERE INDICATED TO SENSITIVE WINDOWS.

**RAINWATER GOODS:** GUTTERS, DOWNPIPES AND FIXINGS TO BE UPVC OR ALUMINIUM POWDER COATED TO SELECTED COLOUR TO MATCH ROOF CAPPING.

**SOLAR PANELS:** INDICATIVE SOLAR PANEL POSITION, FINAL SOLAR PANEL POSITION DEPENDS ON HOUSE ORIENTATION. THE SOLAR PANELS INDICATED ARE A PROVISIONAL OPTION TO SATISFY RENEWABLE ENERGY REQUIREMENTS OF BUILDING REGULATIONS PART L. SOLAR PANELS MAY BE OMITTED IN FAVOUR OF ALTERNATIVE RENEWABLE ENERGY OPTIONS.



RIAI

Planning Application

DAVEY + SMITH ARCHITECTS

DAVEY + SMITH ARCHITECTS UNIT 13, THE SEAPORT BUILDING, 44-45 CLONTARF ROAD, CLONTARF, DUBLIN 3   PH: 01 247638   EMAIL: info@davey-smith.com   WEB: www.davey-smith.com	Scale: 1:100
Layout ID: PH 013	Job No: 2004
Project: Clonburris, K1	Series: PLANNING
Drawing Name: Apartment Block B - Second & Third Plan	Date: 29/06/2022
	Status: Planning
	Revision:

THIS DRAWING TO BE READ IN CONJUNCTION WITH RELEVANT CONSULTANT'S DRAWINGS - NOTIFY ARCHITECTS OF ANY DISCREPANCIES - CHECK DIMENSIONS ON SITE - USE FIGURE DIMENSIONS ONLY - COPYRIGHT RESERVED FOR DAVEY + SMITH ARCHITECTS LTD.