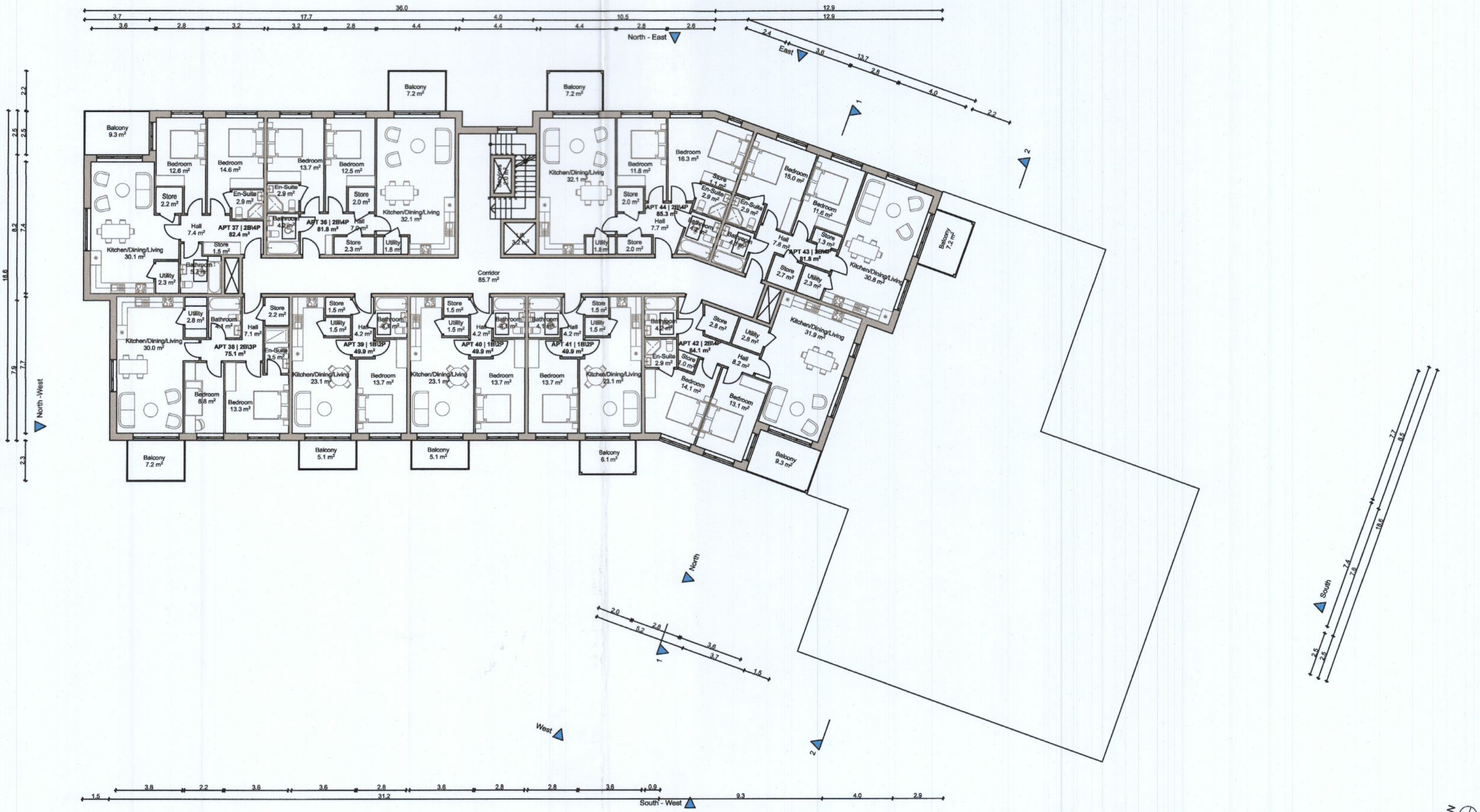
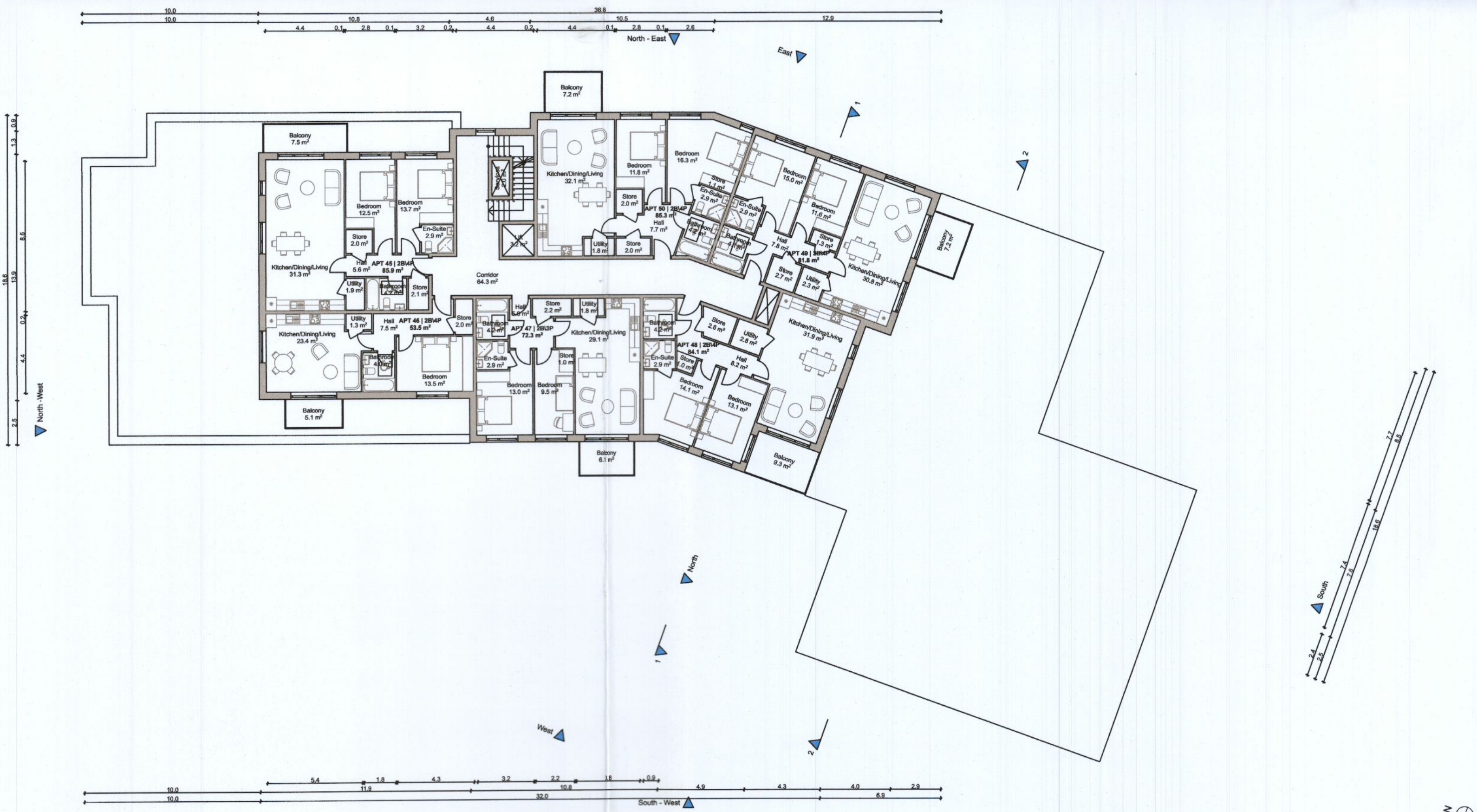


APARTMENT BLOCK A
Total Number of Units - 50 | Total GFA - 4,375.7 m²



04-Fourth Floor



05-Fifth Floor

Refer to Site Plan for:
 - Finished floor levels to survey datum
 - Orientation
 - Handing of type for each unit

Total 50 No. of Units	
1 Bed Apartment / 2 Person	Total 14 No. of Units
2 Bed Apartment / 3 Person	Total 6 No. of Units
2 Bed Apartment / 4 Person	Total 30 No. of Units

Apartment 36		
Gross Internal Area		
Area Type	Proposed Area	DoHPCLG Area Min.
2 Bed Unit / 4 Person	81.8 m ²	73.0 m ²
Space Provision & Room Sizes		
Area Type	Proposed Area	DoHPCLG Area Min.
Aggregate Bedroom Area	26.2 m ²	24.4 m ²
Aggregate Living Area	32.1 m ²	30.0 m ²
Storage Provision		
Area Type	Proposed Area	DoHPCLG Area Min.
Storage	6.1 m ²	6.0 m ²
Apartment 37		
Gross Internal Area		
Area Type	Proposed Area	DoHPCLG Area Min.
2 Bed Unit / 4 Person	82.4 m ²	73.0 m ²
Space Provision & Room Sizes		
Area Type	Proposed Area	DoHPCLG Area Min.
Aggregate Bedroom Area	27.2 m ²	24.4 m ²
Aggregate Living Area	30.1 m ²	30.0 m ²
Storage Provision		
Area Type	Proposed Area	DoHPCLG Area Min.
Storage	6.0 m ²	6.0 m ²
Apartment 38		
Gross Internal Area		
Area Type	Proposed Area	DoHPCLG Area Min.
2 Bed Unit / 3 Person	75.1 m ²	63.0 m ²
Space Provision & Room Sizes		
Area Type	Proposed Area	DoHPCLG Area Min.
Aggregate Bedroom Area	22.1 m ²	20.1 m ²
Aggregate Living Area	30.0 m ²	28.0 m ²
Storage Provision		
Area Type	Proposed Area	DoHPCLG Area Min.
Storage	5.0 m ²	5.0 m ²
Apartment 39, 40 & 41		
Gross Internal Area		
Area Type	Proposed Area	DoHPCLG Area Min.
1 Bed Unit / 2 Person	49.9 m ²	45.0 m ²
Space Provision & Room Sizes		
Area Type	Proposed Area	DoHPCLG Area Min.
Aggregate Bedroom Area	13.7 m ²	11.4 m ²
Aggregate Living Area	23.1 m ²	23.0 m ²
Storage Provision		
Area Type	Proposed Area	DoHPCLG Area Min.
Storage	3.0 m ²	3.0 m ²
Apartment 42 & 48		
Gross Internal Area		
Area Type	Proposed Area	DoHPCLG Area Min.
2 Bed Unit / 4 Person	84.1 m ²	73.0 m ²
Space Provision & Room Sizes		
Area Type	Proposed Area	DoHPCLG Area Min.
Aggregate Bedroom Area	27.2 m ²	24.4 m ²
Aggregate Living Area	31.9 m ²	30.0 m ²
Storage Provision		
Area Type	Proposed Area	DoHPCLG Area Min.
Storage	6.6 m ²	6.0 m ²
Apartment 43 & 49		
Gross Internal Area		
Area Type	Proposed Area	DoHPCLG Area Min.
2 Bed Unit / 4 Person	81.8 m ²	73.0 m ²
Space Provision & Room Sizes		
Area Type	Proposed Area	DoHPCLG Area Min.
Aggregate Bedroom Area	26.6 m ²	24.4 m ²
Aggregate Living Area	30.8 m ²	30.0 m ²
Storage Provision		
Area Type	Proposed Area	DoHPCLG Area Min.
Storage	6.3 m ²	6.0 m ²
Apartment 44 & 50		
Gross Internal Area		
Area Type	Proposed Area	DoHPCLG Area Min.
2 Bed Unit / 4 Person	85.3 m ²	73.0 m ²
Space Provision & Room Sizes		
Area Type	Proposed Area	DoHPCLG Area Min.
Aggregate Bedroom Area	28.1 m ²	24.4 m ²
Aggregate Living Area	32.1 m ²	30.0 m ²
Storage Provision		
Area Type	Proposed Area	DoHPCLG Area Min.
Storage	6.9 m ²	6.0 m ²
Apartment 45		
Gross Internal Area		
Area Type	Proposed Area	DoHPCLG Area Min.
2 Bed Unit / 4 Person	85.9 m ²	73.0 m ²
Space Provision & Room Sizes		
Area Type	Proposed Area	DoHPCLG Area Min.
Aggregate Bedroom Area	26.2 m ²	24.4 m ²
Aggregate Living Area	31.3 m ²	30.0 m ²
Storage Provision		
Area Type	Proposed Area	DoHPCLG Area Min.
Storage	6.0 m ²	6.0 m ²
Apartment 46		
Gross Internal Area		
Area Type	Proposed Area	DoHPCLG Area Min.
1 Bed Unit / 2 Person	53.5 m ²	45.0 m ²
Space Provision & Room Sizes		
Area Type	Proposed Area	DoHPCLG Area Min.
Aggregate Bedroom Area	13.5 m ²	11.4 m ²
Aggregate Living Area	23.4 m ²	23.0 m ²
Storage Provision		
Area Type	Proposed Area	DoHPCLG Area Min.
Storage	3.3 m ²	3.0 m ²
Apartment 47		
Gross Internal Area		
Area Type	Proposed Area	DoHPCLG Area Min.
2 Bed Unit / 3 Person	72.3 m ²	63.0 m ²
Space Provision & Room Sizes		
Area Type	Proposed Area	DoHPCLG Area Min.
Aggregate Bedroom Area	22.5 m ²	20.1 m ²
Aggregate Living Area	29.1 m ²	28.0 m ²
Storage Provision		
Area Type	Proposed Area	DoHPCLG Area Min.
Storage	5.0 m ²	5.0 m ²

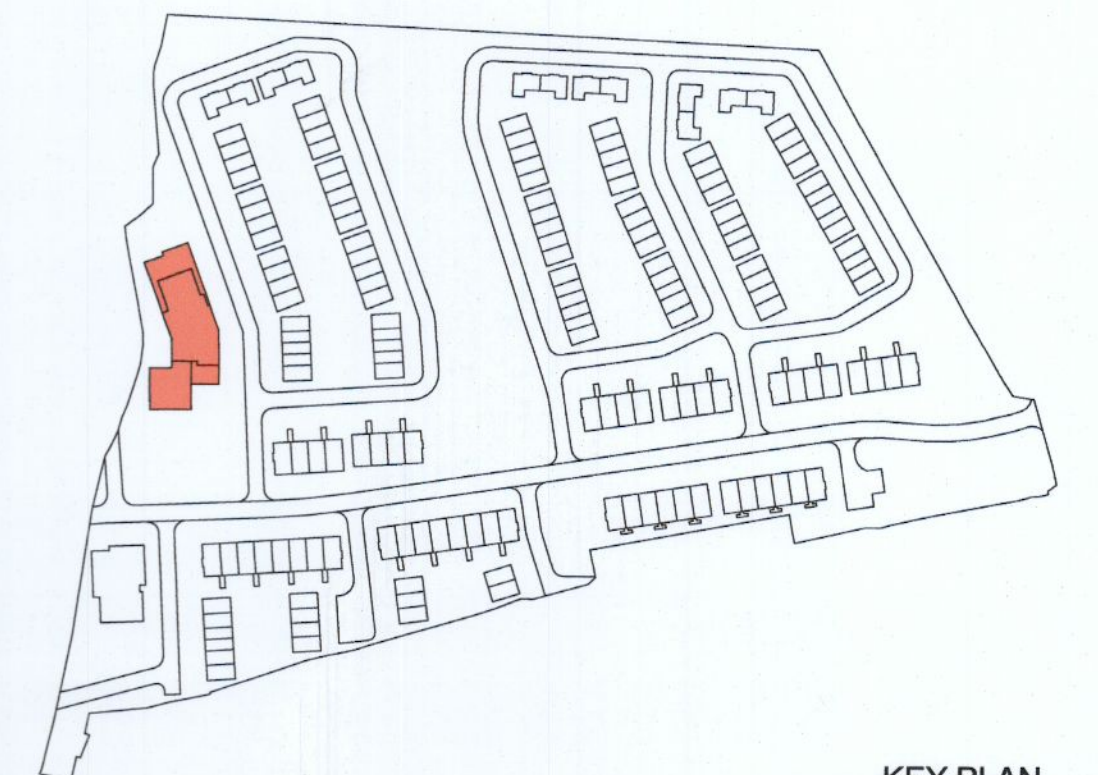
Notes

Do not scale from this drawing.
 Use figured dimensions only.
 All errors and omissions to be reported to the Architect.
 This drawing is to be read in conjunction with relevant consultant's drawings.
 All dimensions are in millimetres and all levels are in meters to match Datums unless otherwise noted.

This drawing is for planning purposes only and not for construction.
 This drawing or design may not be reproduced without permission.

NOTES ON FINISHES:

ROOF:	CAPPING TO BE ALUMINIUM POWDER COATED TO SELECTED COLOUR.
WALLS:	SELECTED CLAY BRICKWORK WHERE INDICATED OTHERWISE SELECTED SELF-COLOURED RENDER
JOINERY:	ALL WINDOWS AND DOORS, FRAMES AND LEAFS TO BE ALUMINIUM POWDER COATED TO APPROVED COLOUR OR UPVC OR PAINTED TIMBER TO APPROVED COLOUR. OBSCURE GLAZING WHERE INDICATED TO SENSITIVE WINDOWS.
RAINWATER GOODS:	GUTTERS, DOWNPIPES AND FIXINGS TO BE UPVC OR ALUMINIUM POWDER COATED TO SELECTED COLOUR TO MATCH ROOF CAPPING.
SOLAR PANELS:	INDICATIVE SOLAR PANEL POSITION, FINAL SOLAR PANEL POSITION DEPENDS ON HOUSE ORIENTATION. THE SOLAR PANELS INDICATED ARE A PROVISIONAL OPTION TO SATISFY RENEWABLE ENERGY REQUIREMENTS OF BUILDING REGULATIONS PART L. SOLAR PANELS MAY BE OMITTED IN FAVOUR OF ALTERNATIVE RENEWABLE ENERGY OPTIONS.



KEY PLAN

RIAI

Plans Proposed

DAVEY + SMITH ARCHITECTS

DAVEY + SMITH ARCHITECTS Unit 13, THE SEAPORT BUILDING, 44-45 CLONTARF ROAD, CLONTARF, DUBLIN 3 PH: 01 247838 EMAIL: info@davey-smith.com WEB: www.davey-smith.com	Scale: 1:200
Layout ID: PH 009	Job No: 2004
Project: Clonburris, K1	Series: PLANNING
Drawing Name: Apartment Block A - Fourth & Fifth Floor Plan	Date: 23/06/2022
	Status: Planning
	Revision: