



Part V Proposals

In respect of:

**Proposed Mixed Use & Residential Development
at “Clonburris Urban Centre” & “Clonburris South-East” of the
Clonburris Strategic Development Zone (SDZ).**

Prepared by the applicant:

Kelland Homes Ltd.

Submitted on behalf of the applicant by:

**Armstrong Fenton Associates
Planning & Development Consultants**

Kelland Homes - Clonburris

Part V Costs

Unit Location	Duplex Block B		Apert Block B
Unit Type	2 bed	3 bed	2bed
Avg Net Sq.M	74.4	111.8	82
Avg Gross Sq.M	74.4	111.8	82
No of units	6	6	20

Building Costs	2 bed	3 bed	2bed
Unit Construction Cost	148,154	222,630	248,841
Site Development	25,875	25,875	25,875
Abnormal (Boherboy Road Upgrade)	3,000	3,000	3,000
Abnormal (Off Site Drainage)	10,962	10,962	10,962
Indirect Costs (Prelims)	18,799	26,247	28,868
Total Cost	206,790	288,713	317,545

Margin	20,679	28,871	31,755
---------------	---------------	---------------	---------------

Development Costs	2 bed	3 bed	2bed
Professional Fees (Pre Planning)	2,000	2,000	2,000
Professional Fees (Post Planning)	18,000	18,000	18,000
Other (Irish Water)	5,600	5,600	5,600
Other (General Utility)	1,500	1,500	1,500
Section 48 Contributions	0	0	0
Section 49 Contributions	0	0	0
Other (Utility Connection)	2,000	2,000	2,000
Other (Homebond)	850	850	850
Other (Fire Certs)	183	274	247
Other (DAC Certs)	39	5,864	53
Legal Fees	2,200	2,200	2,200
Total Development Costs	32,372	38,288	32,449

Finance	18,094	25,262	27,785
----------------	---------------	---------------	---------------

Total Cost	277,935	381,135	409,534
-------------------	----------------	----------------	----------------

Existing Use Value	1,224	1,224	1,224
---------------------------	--------------	--------------	--------------

VAT	37,686	51,618	55,452
------------	---------------	---------------	---------------

Total Per Unit	316,845	433,977	466,210
-----------------------	----------------	----------------	----------------

Grand Total	1,901,071	2,603,862	9,324,207
--------------------	------------------	------------------	------------------

0

0

0

Duplex Block I	1		D3-M	K2	Cell 8	3 bed	Duplex	3 Bed 1st & 2nd Floor Duplex	111.7	111.7
Duplex Block I	1		D2-M	K2	Cell 8	2 bed	Duplex	GF Apartment Duplex	74.4	74.4
Duplex Block I	1		D3-M	K2	Cell 8	3 bed	Duplex	3 Bed 1st & 2nd Floor Duplex	111.7	111.7
Duplex Block I	1		D2-E	K2	Cell 8	2 bed	Duplex	GF Apartment Duplex	74.4	74.4
Duplex Block I	1		D3-E	K2	Cell 8	3 bed	Duplex	3 Bed 1st & 2nd Floor Duplex	111.7	111.7
House	1		A3	K1	Cell 9	3 bed	End Terrace	2 Storey	107.4	107.4
House	1		B	K1	Cell 9	2 bed	Mid Terrace	2 Storey	86.2	86.2
House	1		B	K1	Cell 9	2 bed	Mid Terrace	2 Storey	86.2	86.2
House	1		B	K1	Cell 10	2 bed	Mid Terrace	2 Storey	86.2	86.2
House	1		B	K1	Cell 9	2 bed	Mid Terrace	2 Storey	86.2	86.2
House	1		A1	K1	Cell 9	3 bed	End Terrace	2 Storey	107.4	107.4
House	1		A1	K1	Cell 9	3 bed	End Terrace	2 Storey	107.4	107.4
House	1		A2	K1	Cell 9	3 bed	Mid Terrace	2 Storey	107.4	107.4
House	1		A2	K1	Cell 9	3 bed	Mid Terrace	2 Storey	107.4	107.4
House	1		A2	K1	Cell 9	3 bed	Mid Terrace	2 Storey	107.4	107.4
House	1		A1	K1	Cell 9	3 bed	End Terrace	2 Storey	107.4	107.4
House	1		A1	K1	Cell 9	3 bed	End Terrace	2 Storey	107.4	107.4
House	1		A2	K1	Cell 9	3 bed	Mid Terrace	2 Storey	107.4	107.4
House	1		A2	K1	Cell 9	3 bed	Mid Terrace	2 Storey	107.4	107.4
House	1		A1	K1	Cell 9	3 bed	End Terrace	2 Storey	107.4	107.4
House	1		A2	K1	Cell 9	3 bed	Mid Terrace	2 Storey	107.4	107.4
House	1		A2	K1	Cell 9	3 bed	Mid Terrace	2 Storey	107.4	107.4
House	1		A1	K1	Cell 9	3 bed	End Terrace	2 Storey	107.4	107.4
House	1		A1	K1	Cell 9	3 bed	End Terrace	2 Storey	107.4	107.4
House	1		A2	K1	Cell 9	3 bed	Mid Terrace	2 Storey	107.4	107.4
House	1		A2	K1	Cell 9	3 bed	Mid Terrace	2 Storey	107.4	107.4
House	1		A1	K1	Cell 9	3 bed	End Terrace	2 Storey	107.4	107.4
House	1		A2	K1	Cell 9	3 bed	Mid Terrace	2 Storey	107.4	107.4
House	1		A1	K1	Cell 9	3 bed	End Terrace	2 Storey	107.4	107.4
House	1		A2	K1	Cell 9	3 bed	Mid Terrace	2 Storey	107.4	107.4
House	1		B	K2	Cell 9	2 bed	Mid Terrace	2 Storey	86.2	86.2
House	1		A2	K1	Cell 9	3 bed	Mid Terrace	2 Storey	107.4	107.4
House	1		A3	K1	Cell 9	3 bed	End Terrace	2 Storey	107.4	107.4
Duplex Block J	1		D2-E	K2	Cell 10	2 bed	Duplex	GF Apartment Duplex	74.4	74.4
Duplex Block J	1		D3-E	K2	Cell 10	3 bed	Duplex	3 Bed 1st & 2nd Floor Duplex	111.7	111.7
Duplex Block J	1		D2-M	K2	Cell 10	2 bed	Duplex	GF Apartment Duplex	74.4	74.4
Duplex Block J	1		D3-M	K2	Cell 10	3 bed	Duplex	3 Bed 1st & 2nd Floor Duplex	111.7	111.7
Duplex Block J	1		D2-M	K2	Cell 10	2 bed	Duplex	GF Apartment Duplex	74.4	74.4
Duplex Block J	1		D3-M	K2	Cell 10	3 bed	Duplex	3 Bed 1st & 2nd Floor Duplex	111.7	111.7
Duplex Block J	1		D2-M	K2	Cell 10	2 bed	Duplex	GF Apartment Duplex	74.4	74.4
Duplex Block J	1		D3-M	K2	Cell 10	3 bed	Duplex	3 Bed 1st & 2nd Floor Duplex	111.7	111.7
Duplex Block K	1		D2-M	K2	Cell 10	2 bed	Duplex	GF Apartment Duplex	74.4	74.4
Duplex Block K	1		D3-M	K2	Cell 10	3 bed	Duplex	3 Bed 1st & 2nd Floor Duplex	111.7	111.7
Duplex Block K	1		D2-M	K2	Cell 10	2 bed	Duplex	GF Apartment Duplex	74.4	74.4
Duplex Block K	1		D3-M	K2	Cell 10	3 bed	Duplex	3 Bed 1st & 2nd Floor Duplex	111.7	111.7
Duplex Block K	1		D2-M	K2	Cell 10	2 bed	Duplex	GF Apartment Duplex	74.4	74.4
Duplex Block K	1		D3-M	K2	Cell 10	3 bed	Duplex	3 Bed 1st & 2nd Floor Duplex	111.7	111.7
Duplex Block K	1		D2-E	K2	Cell 10	2 bed	Duplex	GF Apartment Duplex	74.4	74.4
Duplex Block K	1		D3-E	K2	Cell 10	3 bed	Duplex	3 Bed 1st & 2nd Floor Duplex	111.7	111.7
House	1		A3	K1	Cell 9	3 bed	End Terrace	2 Storey	107.4	107.4
House	1		A2	K1	Cell 9	3 bed	Mid Terrace	2 Storey	107.4	107.4
House	1		A2	K1	Cell 9	3 bed	Mid Terrace	2 Storey	107.4	107.4
House	1		A1	K1	Cell 9	3 bed	End Terrace	2 Storey	107.4	107.4
House	1		A1	K1	Cell 9	3 bed	End Terrace	2 Storey	107.4	107.4
House	1		B	K2	Cell 10	2 bed	Mid Terrace	2 Storey	86.2	86.2
House	1		B	K1	Cell 9	2 bed	Mid Terrace	2 Storey	86.2	86.2
House	1		A1	K1	Cell 9	3 bed	End Terrace	2 Storey	107.4	107.4
House	1		A1	K1	Cell 9	3 bed	End Terrace	2 Storey	107.4	107.4
House	1		A2	K1	Cell 9	3 bed	Mid Terrace	2 Storey	107.4	107.4
House	1		A2	K1	Cell 9	3 bed	Mid Terrace	2 Storey	107.4	107.4
House	1		A1	K1	Cell 9	3 bed	End Terrace	2 Storey	107.4	107.4
House	1		A1	K1	Cell 9	3 bed	End Terrace	2 Storey	107.4	107.4
House	1		C	K1	Cell 9	4 bed	Semi Detached	2 Storey	132.8	132.8
House	1		C	K1	Cell 9	4 bed	Semi Detached	2 Storey	132.8	132.8
House	1		C	K1	Cell 9	4 bed	Semi Detached	2 Storey	132.8	132.8
House	1		A1	K1	Cell 9	3 bed	End Terrace	2 Storey	107.4	107.4
House	1		A2	K1	Cell 9	3 bed	Mid Terrace	2 Storey	107.4	107.4
House	1		A2	K1	Cell 9	3 bed	Mid Terrace	2 Storey	107.4	107.4
House	1		A1	K1	Cell 9	3 bed	End Terrace	2 Storey	107.4	107.4
House	1		A1	K1	Cell 9	3 bed	End Terrace	2 Storey	107.4	107.4
House	1		B	K2	Cell 9	2 bed	Mid Terrace	2 Storey	86.2	86.2
House	1		B	K2	Cell 9	2 bed	Mid Terrace	2 Storey	86.2	86.2
House	1		A3	K1	Cell 9	3 bed	End Terrace	2 Storey	107.4	107.4
TOTAL	246		TOTAL						19,225	19,225

House Unit Summary

Unit Type	No	Sq.M	Ref	Bed	Type	Storey	Net Sq.M	Total Sq.M
House A1	42	107.4	A1	3 bed	End Terrace	2 Storey	4,511	4,511
House A2	39	107.4	A2	3 bed	Mid Terrace	2 Storey	4,189	4,189
House A3	6	107.4	A3	3 bed	End Terrace	2 Storey	644	644
House B	19	86.2	B	2 bed	Mid Terrace	2 Storey	1,638	1,638
House C	12	132.8	C	4 bed	Semi Detached	2 Storey	1,594	1,594
Sub Total	118						12,576	12,576

Duplex Summary

Unit Type	No	Sq.M	Ref	Bed	Type	Storey	Net Sq.M	Total Sq.M		
Duplex Block A	2	74.4	D2-E	K1	Cell 2	3 bed	End Terrace	GF Apartment Duplex	148.8	148.8
Duplex Block A	2	111.8	D3-E	K1	Cell 2	3 bed	End Terrace	3 Bed 1st & 2nd Floor Duplex	223.5	223.5
Duplex Block A	6	74.4	D2-M	K1	Cell 2	3 bed	Mid Terrace	GF Apartment Duplex	446.4	446.4
Duplex Block A	6	111.8	D3-M	K1	Cell 2	3 bed	Mid Terrace	3 Bed 1st & 2nd Floor Duplex	670.5	670.5
Sub Total	16						1,489	1,489		

Unit Type	No	Sq.M	Ref		Bed	Type	Storey	Net Sq.M	Total Sq.M	
Duplex Block B	2	74.4	D2-E	K1	Cell 2	2 bed	Mid Terrace	GF Apartment Duplex	148.8	148.8
Duplex Block B	2	111.8	D3-E	K1	Cell 2	3 bed	Mid Terrace	3 Bed 1st & 2nd Floor Duplex	223.6	223.6
Duplex Block B	6	74.4	D2-M	K1	Cell 2	2 bed	Mid Terrace	GF Apartment Duplex	446.4	446.4
Duplex Block B	6	111.8	D3-M	K1	Cell 2	3 bed	Mid Terrace	3 Bed 1st & 2nd Floor Duplex	670.8	670.8
Sub Total	16							1,490	1,490	

Unit Type	No	Sq.M	Ref		Bed	Type	Storey	Net Sq.M	Total Sq.M	
Duplex Block C	2	74.4	D2-E	K1	Cell 2	3 bed	Mid Terrace	GF Apartment Duplex	148.8	148.8
Duplex Block C	2	111.8	D3-E	K1	Cell 2	2 bed	Mid Terrace	3 Bed 1st & 2nd Floor Duplex	223.5	223.5
Duplex Block C	2	74.4	D2-M	K1	Cell 2	3 bed	Mid Terrace	GF Apartment Duplex	148.8	148.8
Duplex Block C	2	111.8	D3-M	K1	Cell 2	2 bed	Mid Terrace	3 Bed 1st & 2nd Floor Duplex	223.6	223.6
Sub Total	8							745	745	

Unit Type	No	Sq.M	Ref		Bed	Type	Storey	Net Sq.M	Total Sq.M	
Duplex Block D	2	74.4	D2-E	K1	Cell 3	3 bed	End Terrace	GF Apartment Duplex	148.8	148.8
Duplex Block D	2	111.8	D3-E	K1	Cell 3	3 bed	Mid Terrace	3 Bed 1st & 2nd Floor Duplex	223.6	223.6
Duplex Block D	2	74.4	D2-M	K1	Cell 3	3 bed	End Terrace	GF Apartment Duplex	148.8	148.8
Duplex Block D	2	111.8	D3-M	K1	Cell 3	3 bed	Semi Detached	3 Bed 1st & 2nd Floor Duplex	223.6	223.6
Sub Total	8							745	745	

Unit Type	No	Sq.M	Ref		Bed	Type	Storey	Net Sq.M	Total Sq.M	
Duplex Block E	2	74.4	D2-E	K1	Cell 4	3 bed	Mid Terrace	GF Apartment Duplex	148.8	148.8
Duplex Block E	2	111.8	D3-E	K1	Cell 4	3 bed	Mid Terrace	3 Bed 1st & 2nd Floor Duplex	223.6	223.6
Duplex Block E	2	74.4	D2-M	K1	Cell 4	3 bed	Mid Terrace	GF Apartment Duplex	148.8	148.8
Duplex Block E	2	111.8	D3-M	K1	Cell 4	3 bed	Mid Terrace	3 Bed 1st & 2nd Floor Duplex	223.6	223.6
Sub Total	8							745	745	

Unit Type	No	Sq.M	Ref		Bed	Type	Storey	Net Sq.M	Total Sq.M	
Duplex Block F	2	74.4	D2-E	K1	Cell 6	3 bed	Mid Terrace	GF Apartment Duplex	148.8	148.8
Duplex Block F	2	111.8	D3-E	K1	Cell 6	4 bed	Mid Terrace	3 Bed 1st & 2nd Floor Duplex	223.6	223.6
Duplex Block F	2	74.4	D2-M	K1	Cell 6	3 bed	Mid Terrace	GF Apartment Duplex	148.8	148.8
Duplex Block F	2	111.8	D3-M	K1	Cell 6	3 bed	Mid Terrace	3 Bed 1st & 2nd Floor Duplex	223.6	223.6
Sub Total	8							745	745	

Unit Type	No	Sq.M	Ref		Bed	Type	Storey	Net Sq.M	Total Sq.M	
Duplex Block G	2	74.4	D2-E	K2	Cell 6	3 bed	End Terrace	GF Apartment Duplex	148.8	148.8
Duplex Block G	2	111.8	D3-E	K2	Cell 6	3 bed	End Terrace	3 Bed 1st & 2nd Floor Duplex	223.6	223.6
Duplex Block G	2	74.4	D2-M	K2	Cell 6	3 bed	Mid Terrace	GF Apartment Duplex	148.8	148.8
Duplex Block G	2	111.8	D3-M	K2	Cell 6	3 bed	Mid Terrace	3 Bed 1st & 2nd Floor Duplex	223.6	223.6
Sub Total	8							745	745	

Unit Type	No	Sq.M	Ref		Bed	Type	Storey	Net Sq.M	Total Sq.M	
Duplex Block H	2	74.4	D2-E	K2	Cell 6	3 bed	End Terrace	GF Apartment Duplex	148.8	148.8
Duplex Block H	2	111.8	D3-E	K2	Cell 6	3 bed	End Terrace	3 Bed 1st & 2nd Floor Duplex	223.6	223.6
Duplex Block H	2	74.4	D2-M	K2	Cell 6	3 bed	End Terrace	GF Apartment Duplex	148.8	148.8
Duplex Block H	2	111.8	D3-M	K2	Cell 6	3 bed	Mid Terrace	3 Bed 1st & 2nd Floor Duplex	223.6	223.6
Sub Total	8							745	745	

Unit Type	No	Sq.M	Ref		Bed	Type	Storey	Net Sq.M	Total Sq.M	
Duplex Block I	2	74.4	D2-E	K2	Cell 6	3 bed	End Terrace	GF Apartment Duplex	148.8	148.8
Duplex Block I	2	111.8	D3-E	K2	Cell 6	3 bed	End Terrace	3 Bed 1st & 2nd Floor Duplex	223.6	223.6
Duplex Block I	2	74.4	D2-M	K2	Cell 6	3 bed	End Terrace	GF Apartment Duplex	148.8	148.8
Duplex Block I	2	111.8	D3-M	K2	Cell 6	3 bed	End Terrace	3 Bed 1st & 2nd Floor Duplex	223.6	223.6
Sub Total	8							745	745	

Unit Type	No	Sq.M	Ref		Bed	Type	Storey	Net Sq.M	Total Sq.M	
Duplex Block J	2	74.4	D2-E	K2	Cell 6	3 bed	Mid Terrace	GF Apartment Duplex	148.8	148.8
Duplex Block J	2	111.8	D3-E	K2	Cell 6	3 bed	End Terrace	3 Bed 1st & 2nd Floor Duplex	223.6	223.6
Duplex Block J	2	74.4	D2-M	K2	Cell 6	3 bed	End Terrace	GF Apartment Duplex	148.8	148.8
Duplex Block J	2	111.8	D3-M	K2-A	Cell 6	2 bed	Apartment	3 Bed 1st & 2nd Floor Duplex	223.6	223.6
Sub Total	8							745	745	

Unit Type	No	Sq.M	Ref		Bed	Type	Storey	Net Sq.M	Total Sq.M	
Duplex Block K	2	74.4	D2-E	K2-A	Cell 6	2 bed	Apartment	GF Apartment Duplex	148.8	148.8
Duplex Block K	2	111.8	D3-E	K2-A	Cell 6	2 bed	Apartment	3 Bed 1st & 2nd Floor Duplex	223.6	223.6
Duplex Block K	2	74.4	D2-M	K2-A	Cell 6	2 bed	Apartment	GF Apartment Duplex	148.8	148.8
Duplex Block K	2	111.8	D3-M	K2-A	Cell 6	2 bed	Apartment	3 Bed 1st & 2nd Floor Duplex	223.6	223.6
Sub Total	8							745	745	

Apartment Units									
Unit Type	No	Sq.M	Ref		Bed	Type	Storey	Net Sq.M	Gross Sq.M
Apartment Block A	1	85			1 Bed	Apartment		53.1	64.7
Apartment Block A	43	81			2 Bed	Apartment		3,496.6	3,496.6
Sub Total	44							3,550	4,266

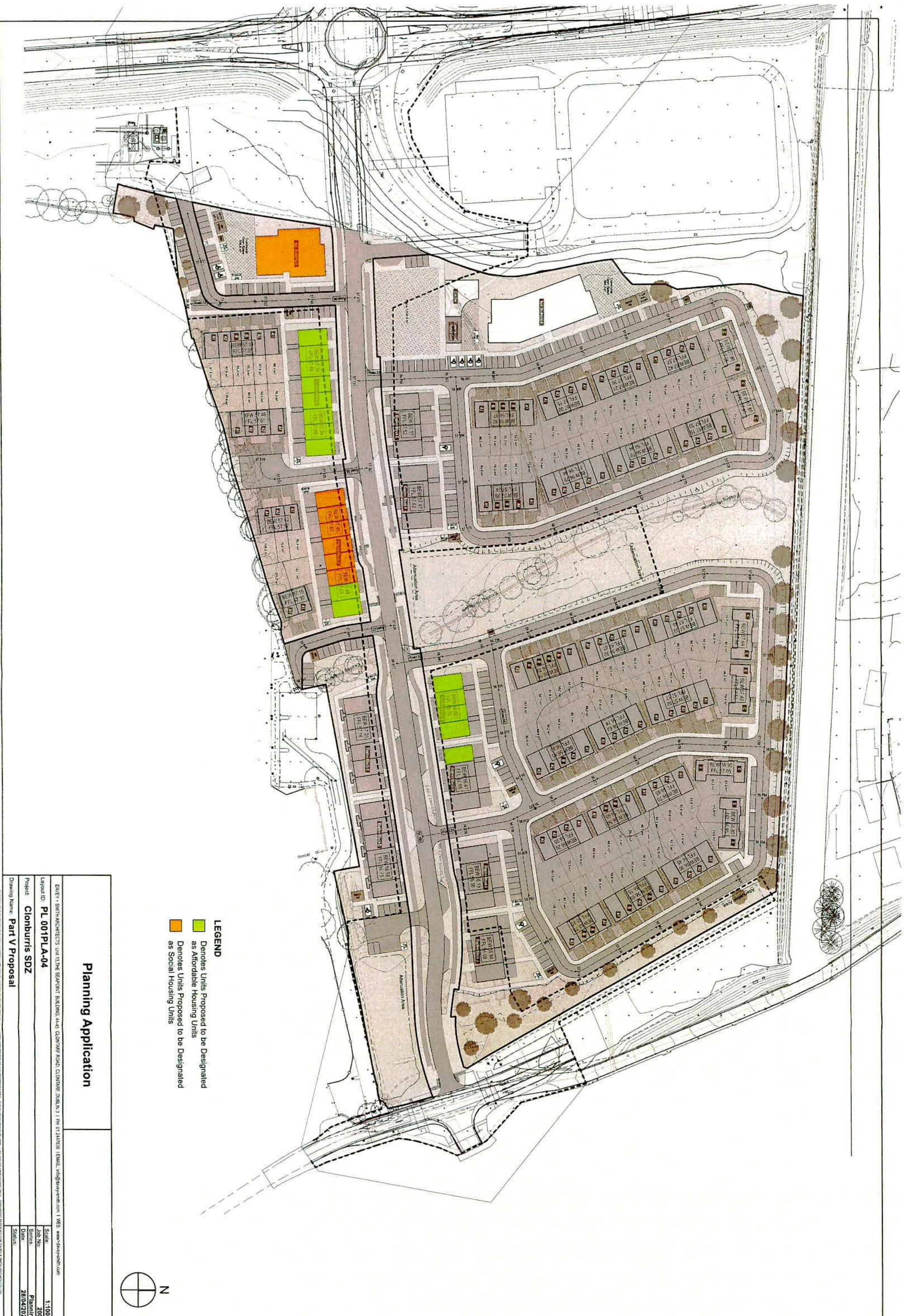
Unit Type	No	Sq.M	Ref		Bed	Type	Storey	Net Sq.M	Gross Sq.M
Apartment Block B	20	101	D.O		2 bed	Apartment		1,647.8	2,010.3
Sub Total	20							1,648	2,010

Totals		Net		Gross	
Total House	118		12,575		12,575
Total Duplex	104		9,682		9,682
Total Apartment	64		5,197		6,276
Total	286		27,455		28,533

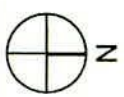
PART V	Total	PV %	Total
Units	286	10%	29
Sq.M	27,455	10%	2,745

Part V Units	No	Avg Net Sq.M	Avg Gross Sq.M	Bed	Type	Total Net Sq.M	Total Gross Sq.M
Apartment Block B	20	82.4	100.5	Cell 1	2 Bed	1,647.8	2,010.3
Duplex Block B	6	74.4	74	Cell 3	2 Bed	446	446
Duplex Block B	6	111.8	112	Cell 3	3 Bed	671	671
Total	32					2,765	3,127

Variance			3.40								20
Part V Unit Type	Apartment	Duplex	Total								
1 bed	0	0	0								
2 bed	20	6	26								
3 bed	0	6	6								
4 bed	0	0	0								
Total	20	12	32								
AFFORDABLE			Total	AFF %	Total						
Units	286	10%	29								
Sq.M	27,455	10%	2,745								
Affordable Units	No	Avg Net Sq.M	Avg Gross Sq.M		Bed	Type		Total Net Sq.M	Total Gross Sq.M		
Duplex Block A	8	74.4	74.4		Cell 2	2 Bed	Duplex	GF Apartment Duplex	595	595	
Duplex Block A	8	111.8	111.8		Cell 2	3 Bed	Duplex	3 Bed 1st & 2nd Floor Duplex	894	894	
Duplex Block A	2	74.4	74.4		Cell 3	2 Bed	Duplex	GF Apartment Duplex	149	149	
Duplex Block A	2	111.8	111.8		Cell 3	3 Bed	Duplex	3 Bed 1st & 2nd Floor Duplex	224	224	
Duplex Block A	4	74.4	74.4		Cell 8	2 Bed	Duplex	GF Apartment Duplex	298	298	
Duplex Block A	4	111.8	111.8		Cell 8	3 Bed	Duplex	3 Bed 1st & 2nd Floor Duplex	447	447	
Duplex Block A	1	74.4	74.4		Cell 8	2 Bed	Duplex	GF Apartment Duplex	74	298	
Duplex Block A	1	111.8	112		Cell 8	3 Bed	Duplex	3 Bed 1st & 2nd Floor Duplex	112	447	
Total	30							2,792	3,351		
Variance			1.40								47
Affordable Unit Type	Apartment	Duplex	Total								
1 bed	0	0	0								
2 bed	0	15	15								
3 bed	0	15	15								
4 bed	0	0	0								
Total	0	30	30								



- LEGEND**
- Denotes Units Proposed to be Designated as Affordable Housing Units
 - Denotes Units Proposed to be Designated as Social Housing Units



Planning Application

DAVEY + SMITH ARCHITECTS Unit 11 THE SEAPORT BUILDING, 44-46 GLOUCESTER ROAD, CLONBURRIS, DUBLIN 3 PH: 01 245258 EMAIL: info@daveysm.com WEB: www.daveysm.com	
Layout ID:	PL 001PLA-04
Scale:	1:1000
Job No.:	2004
Project:	Clonburris SDZ
Series:	Planning
Date:	28/04/2022
Drawing Name:	Part V Proposal
Scale:	

THE DRAWING IS TO BE READ IN CONJUNCTION WITH ALL CONSULTANT DRAWINGS. NO PART OF THIS DRAWING IS TO BE REPRODUCED OR TRANSMITTED IN ANY FORM OR BY ANY MEANS, ELECTRONIC OR MECHANICAL, INCLUDING PHOTOCOPYING, RECORDING, OR BY ANY INFORMATION STORAGE AND RETRIEVAL SYSTEM. WITHOUT THE WRITTEN PERMISSION OF DAVEY + SMITH ARCHITECTS.

