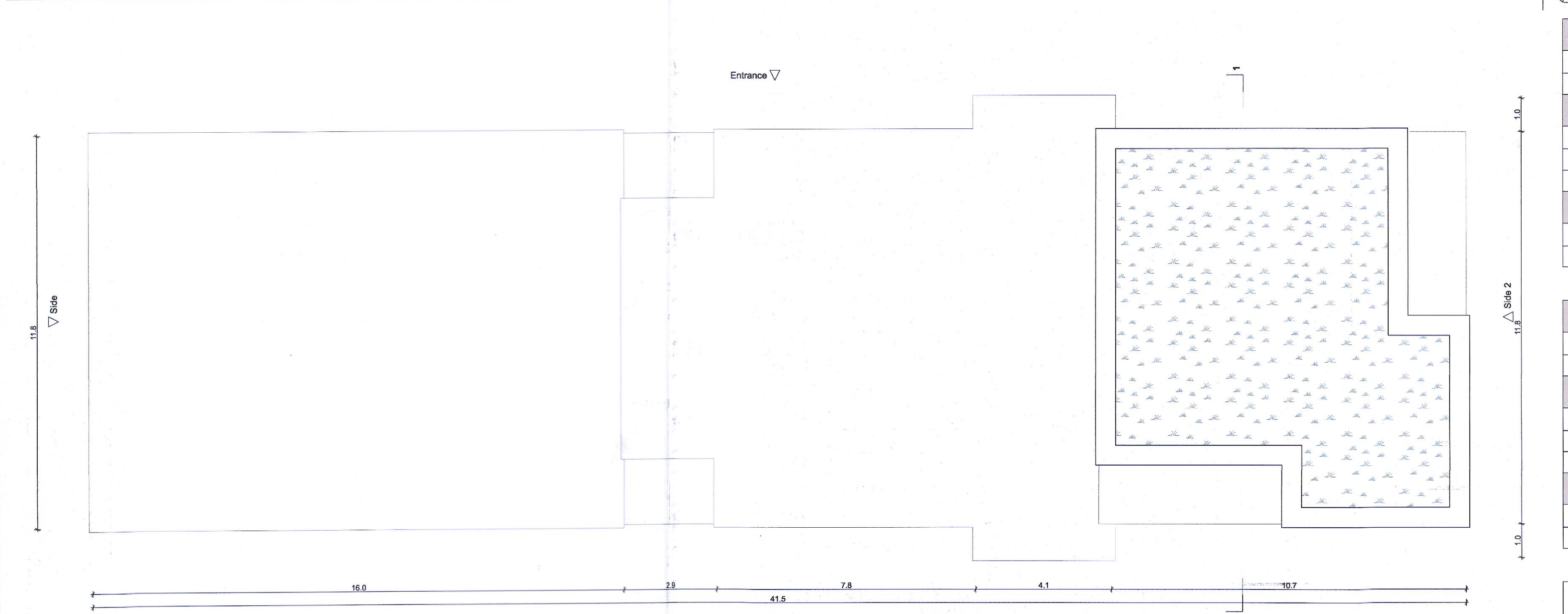
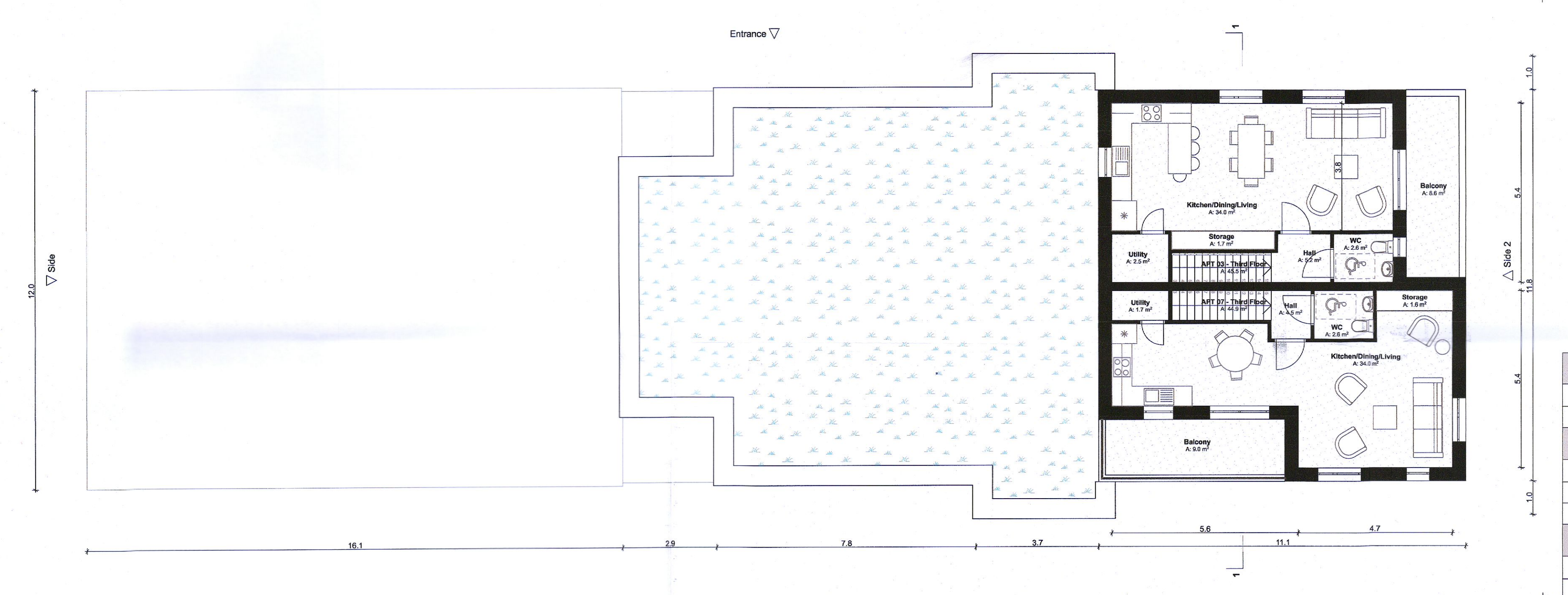


Second Floor



Roof Plan

## APARTMENT BLOCK J

### 11 no. two story apartment duplex + 2 no. one storey apartment

#### Notes

Do not scale from this drawing.  
Use figured dimensions only.  
All errors and omissions to be reported to the Architect.  
This drawing is to be read in conjunction with relevant consultant's drawings.  
All dimensions are in millimetres and all levels are in meters to match Datums unless otherwise noted.

This drawing is for planning purposes only and not for construction.  
This drawing or design may not be reproduced without permission.

NOTES ON FINISHES:	
ROOF:	CAPPING TO BE ALUMINIUM POWDER COATED TO SELECTED COLOUR.
WALLS:	SELECTED CLAY BRICKWORK WHERE INDICATED OTHERWISE SELECTED SELF-COLOURED RENDER
JOINERY:	ALL WINDOWS AND DOORS, FRAMES AND LEAFS TO BE ALUMINIUM POWDER COATED TO APPROVED COLOUR OR UPVC OR PAINTED TIMBER TO APPROVED COLOUR. OBSCURE GLAZING WHERE INDICATED TO SENSITIVE WINDOWS.
RAINWATER GOODS:	GUTTERS, DOWNPIPES AND FIXINGS TO BE UPVC OR ALUMINIUM POWDER COATED TO SELECTED COLOUR TO MATCH ROOF CAPPING.
SOLAR PANELS:	INDICATIVE SOLAR PANEL POSITION, FINAL SOLAR PANEL POSITION DEPENDS ON HOUSE ORIENTATION. THE SOLAR PANELS INDICATED ARE A PROVISIONAL OPTION TO SATISFY RENEWABLE ENERGY REQUIREMENTS OF BUILDING REGULATIONS PART L. SOLAR PANELS MAY BE OMITTED IN FAVOUR OF ALTERNATIVE RENEWABLE ENERGY OPTIONS.

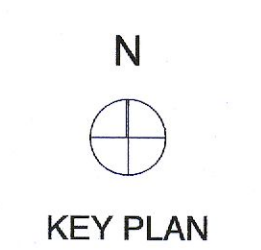
Apartment Block - J - Apartment 3 - Gross Internal Area		
Area Type	Proposed Area	
Duplex 3 Bed Unit	101.5 m <sup>2</sup>	90.0 m <sup>2</sup>
Space Provision & Room Sizes		
Area Type	Proposed Area	DoHPCLG Area Min.
Aggregate Bedroom Area	31.9 m <sup>2</sup>	31.5 m <sup>2</sup>
Aggregate Living Area	34.0 m <sup>2</sup>	34.0 m <sup>2</sup>
Storage Provision		
Area Type	Proposed Area	DoHPCLG Area Min.
Storage	9.8 m <sup>2</sup>	9.0 m <sup>2</sup>

Apartment Block - J - Apartment 5 - Gross Internal Area		
Area Type	Proposed Area	DoHPCLG Area Min.
Duplex 3 Bed Unit	101.5 m <sup>2</sup>	90.0 m <sup>2</sup>
Space Provision & Room Sizes		
Area Type	Proposed Area	DoHPCLG Area Min.
Aggregate Bedroom Area	31.9 m <sup>2</sup>	31.5 m <sup>2</sup>
Aggregate Living Area	34.0 m <sup>2</sup>	34.0 m <sup>2</sup>
Storage Provision		
Area Type	Proposed Area	DoHPCLG Area Min.
Storage	9.8 m <sup>2</sup>	9.0 m <sup>2</sup>

Apartment Block - J - Apartment 4 & 6 - Gross Internal Area		
Area Type	Proposed Area	DoHPCLG Area Min.
1 Bed Unit	50.0 m <sup>2</sup>	45.0 m <sup>2</sup>
Space Provision & Room Sizes		
Area Type	Proposed Area	DoHPCLG Area Min.
Aggregate Bedroom Area	13.1 m <sup>2</sup>	11.4 m <sup>2</sup>
Aggregate Living Area	23.0 m <sup>2</sup>	23.0 m <sup>2</sup>
Storage Provision		
Area Type	Proposed Area	DoHPCLG Area Min.
Storage	5.3 m <sup>2</sup>	3.0 m <sup>2</sup>

Refer to Site Plan for:

- Finished floor levels to survey datum
- Orientation
- Handing of type for each unit



KEY PLAN

RIA

Planning Application  
- Additional Information

DAVEY + SMITH  
ARCHITECTS

DAVEY+SMITH ARCHITECTS | 13 SEAPONT BUILDING, 44/45 CLONTARF ROAD, CLONTARF, DUBLIN 3 | PH: 01 2447838 | EMAIL: info@davey-smith.com | WEB: www.davey-smith.com

Layout ID: PH 031 - Apartment Block J-

Project: Adamstown SDZ - Phase 03

Drawing Name: Second, Third Floor and Roof Plan

Scale: 1:100

Job No: 1515

Series: PLANNING

Date: 04/07/2022

Status: Additional Information