



KEY PLAN - NTS

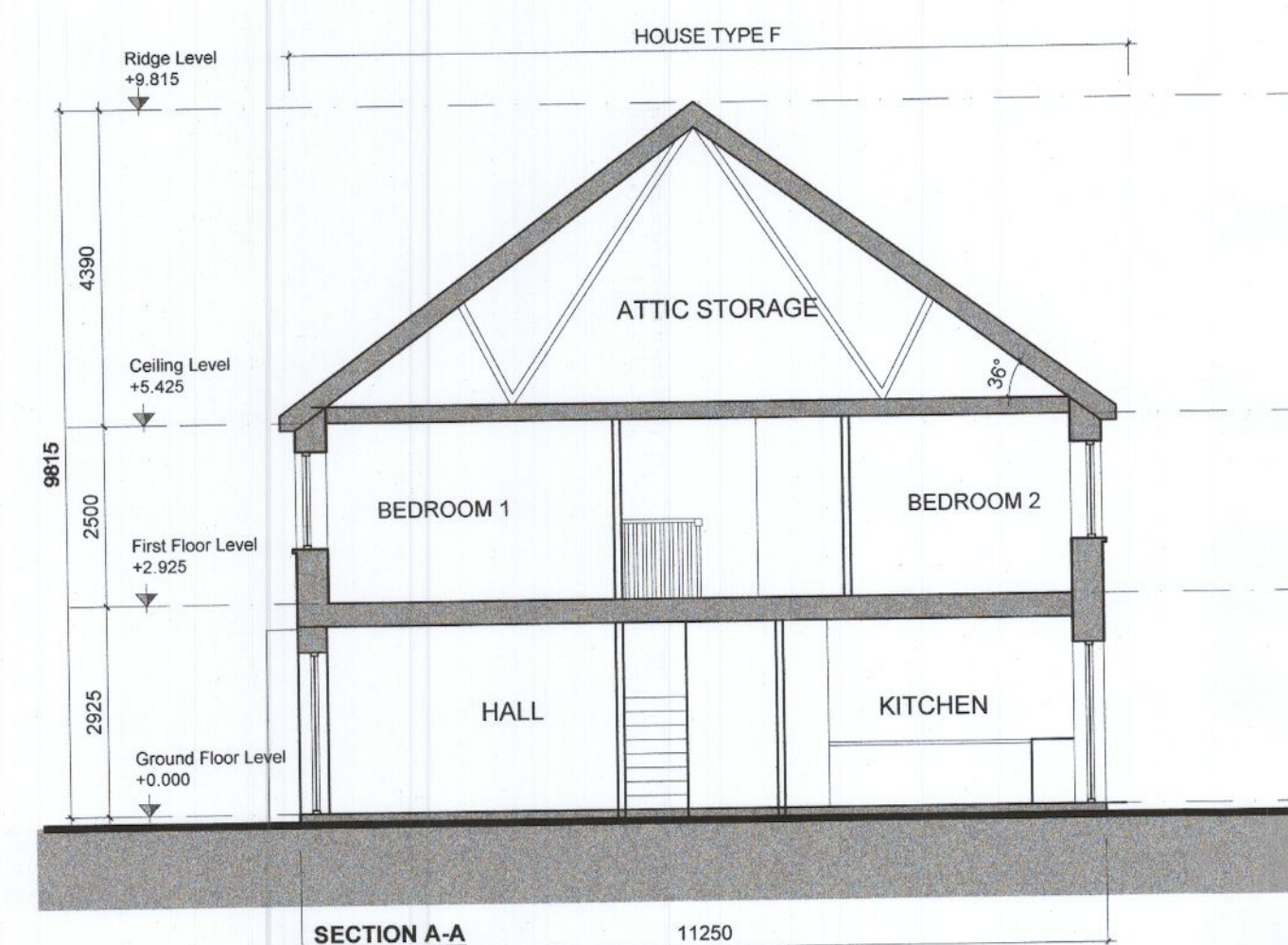
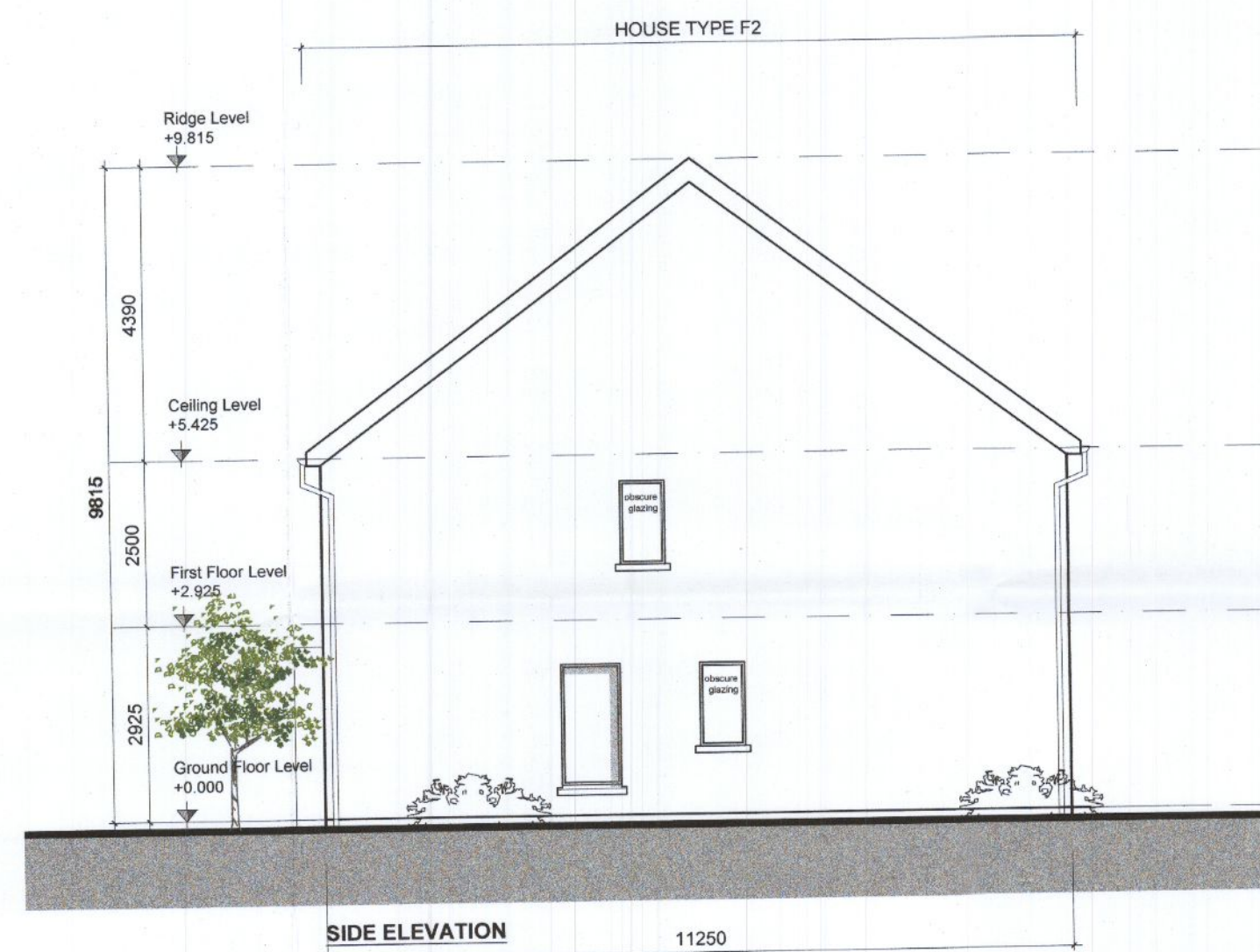
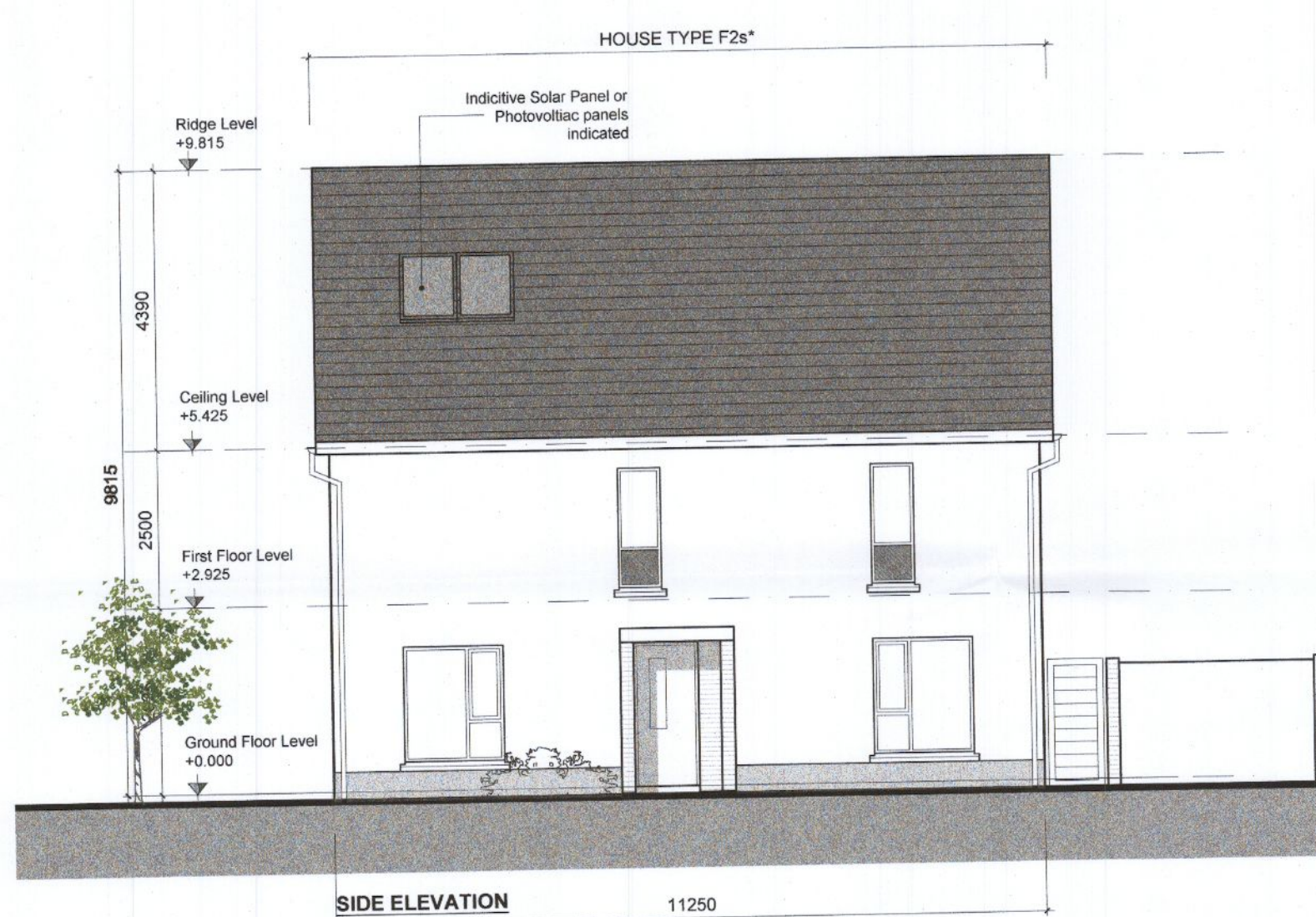
**GENERAL NOTES**

THIS DRAWING TO BE READ IN CONJUNCTION WITH ARCHITECT'S DRAWINGS, CONSULTANT ENGINEERS DRAWINGS AND SPECIFICATIONS & LANDSCAPE ARCHITECTS DRAWINGS  
 REFER TO ARCHITECT'S SITE PLAN PL009-014 FOR NORTH ORIENTATION AND LEVELS.  
 LEVELS GIVEN ON HOUSE TYPE DRAWINGS ARE GIVEN TO A LOCAL ABSOLUTE ZERO LEVEL. FOR SPECIFIC LEVELS DEPENDING ON INDIVIDUAL UNIT LOCATION, REFER TO ARCHITECT'S CONTEXT SECTIONS AND ENGINEER'S DRAWINGS WHERE LEVELS ARE ARE ALL GIVEN IN RELATION TO LAND SURVEYOR'S BENCHMARK BASED ON MALIN HEAD DATUM LEVEL.

**NOTES ON FINISHES:**

- PITCHED ROOF:** TO BE FINISHED IN SLATE OR CONCRETE ROOF TILES IN SELECTED COLOUR OR SIMILAR APPROVED.
- WALLS:** SELECTED BRICKWORK WHERE INDICATED OTHERWISE PAINTED SAND / CEMENT RENDER OR SELF COLOURED RENDER.
- JOINERY:** ALL WINDOWS AND DOORS, FRAMES AND LEAVES, TO BE ALUMINIUM POWDER-COATED TO APPROVED COLOUR OR UPVC OR PAINTED TIMBER TO APPROVED COLOUR. SPANDREL PANEL / OBSCURE GLAZING WHERE INDICATED TO SENSITIVE WINDOWS.
- RAINWATER GOODS:** GUTTERS, DOWNPIPES, AND FIXINGS TO BE UPVC OR ALUMINIUM POWDER COATED TO SELECTED COLOUR TO MATCH ROOF SLATES.

\* **SOLAR PANELS:** INDICATIVE SOLAR PANEL POSITION, FINAL SOLAR PANEL POSITION DEPENDS ON HOUSE ORIENTATION. THE SOLAR PANELS SHOWN ARE A PROVISIONAL OPTION TO SATISFY RENEWABLE ENERGY REQUIREMENTS OF BUILDING REGS PART L. SOLAR PANELS MAY BE OMITTED IN FAVOUR OF ALTERNATIVE RENEWABLE ENERGY SOURCE.



**NOTES:**

DO NOT SCALE FROM DRAWINGS. WORK TO FIGURED DIMENSIONS ONLY. ARCHITECT TO BE NOTIFIED OF ALL DISCREPANCIES.

| REVISIONS |             |     |
|-----------|-------------|-----|
| DATE      | DESCRIPTION | No. |
|           |             |     |
|           |             |     |
|           |             |     |
|           |             |     |
|           |             |     |
|           |             |     |
|           |             |     |

|   |                      |         |             |
|---|----------------------|---------|-------------|
| <p>M<sup>C</sup>CROSSAN O'ROURKE MANNING ARCHITECTS</p>   | PROJECT TITLE        | DATE    | DRAWN BY:   |
|   | CLONBURRIS, PHASE 1A | MAY'22  | AL          |
|   | DRAWING TITLE        | SCALE:  | REVISION:   |
|   | F2 - F1 - F1 - F2s*  | 1:100   |             |
| ELEVATIONS & SECTION  |                      | JOB NO: | DRAWING NO: |
| 1 Grantham Street, Dublin 8. 00344471 (residential)<br>Tel: 01-4786700 Fax: 01-4782711 E-Mail: arch@mcorm.com |                      | 19014   | PL119       |