

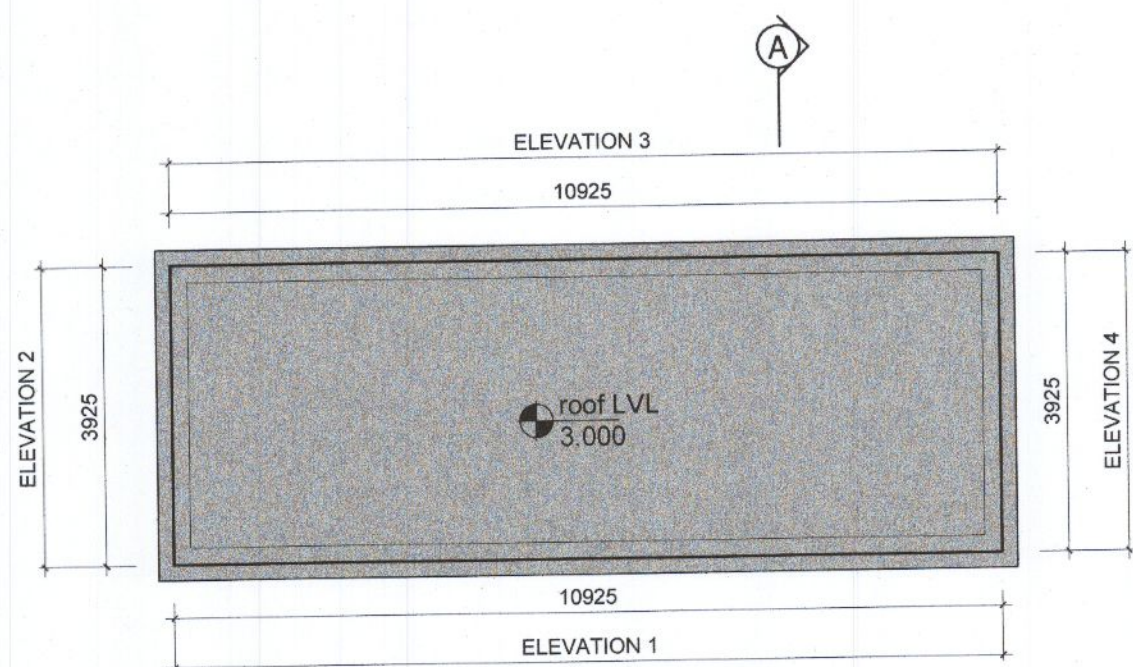
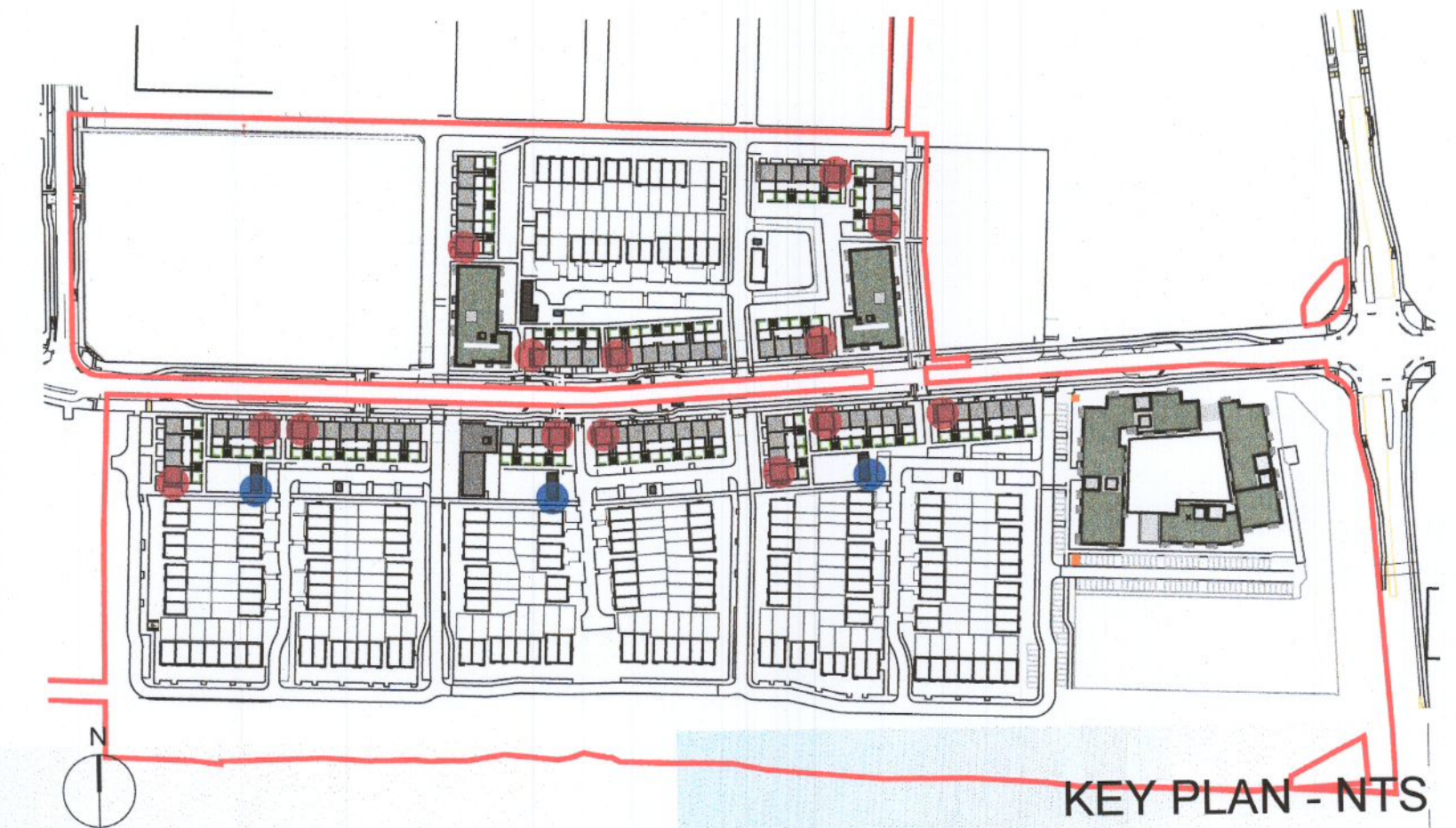
OUTLINE SPECIFICATION TO BIN STORE:
 BRICK WALLS TO SELECTED COLOUR TO BIN STORE WALLS WITH GALVANISED STEEL OPEN MESH ABOVE AND SINGLE PLY MEMBRANE ROOFING WITH PRESSED METAL FLASHING, FASCIA AND SOFFITS. LOUVRED TIMBER / ALUMINIMUM DOORS TO STORES.

SECURE BICYCLE STORAGE PROVISION - DUPLEXES
 14no. DUPLEX BLOCKS

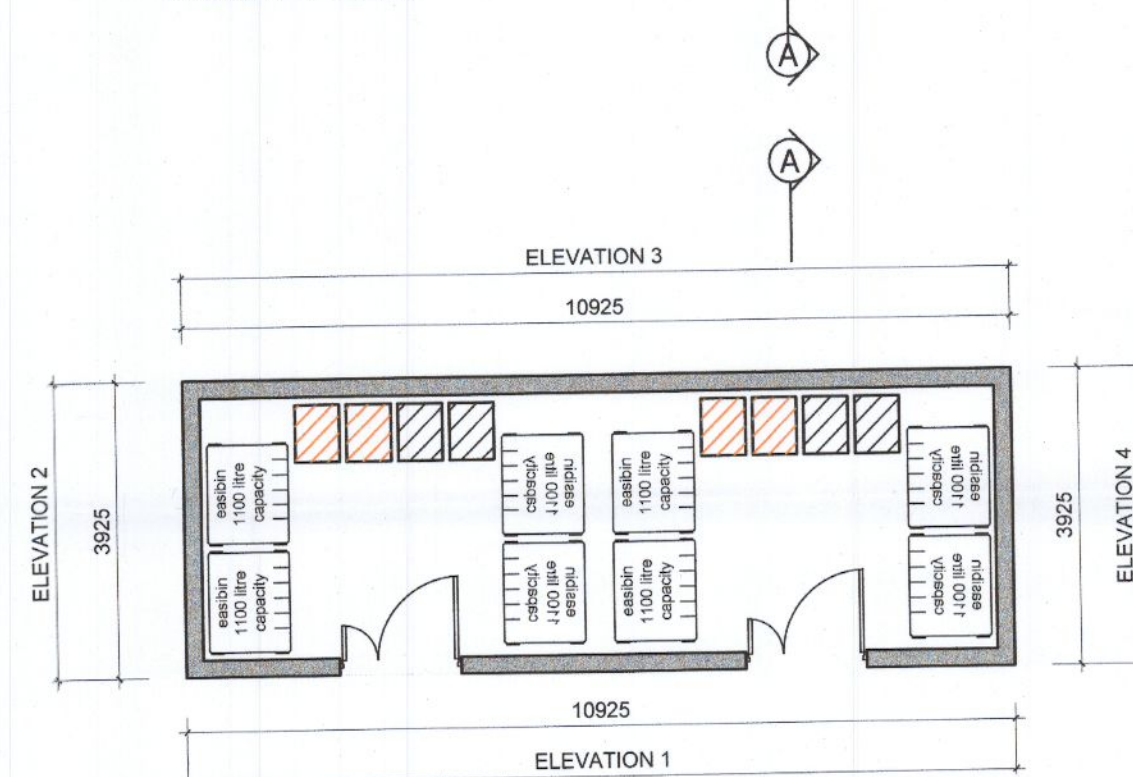
1no. SECURE STORAGE UNIT PER DUPLEX BLOCK
 21no. SPACES PER SECURE STORAGE UNIT
 294no. SECURE BICYCLE PARKING SPACES

74no. 2 BED APARTMENTS UNITS
 74no. 3 BED DUPLEX UNITS
 148no. TOTAL

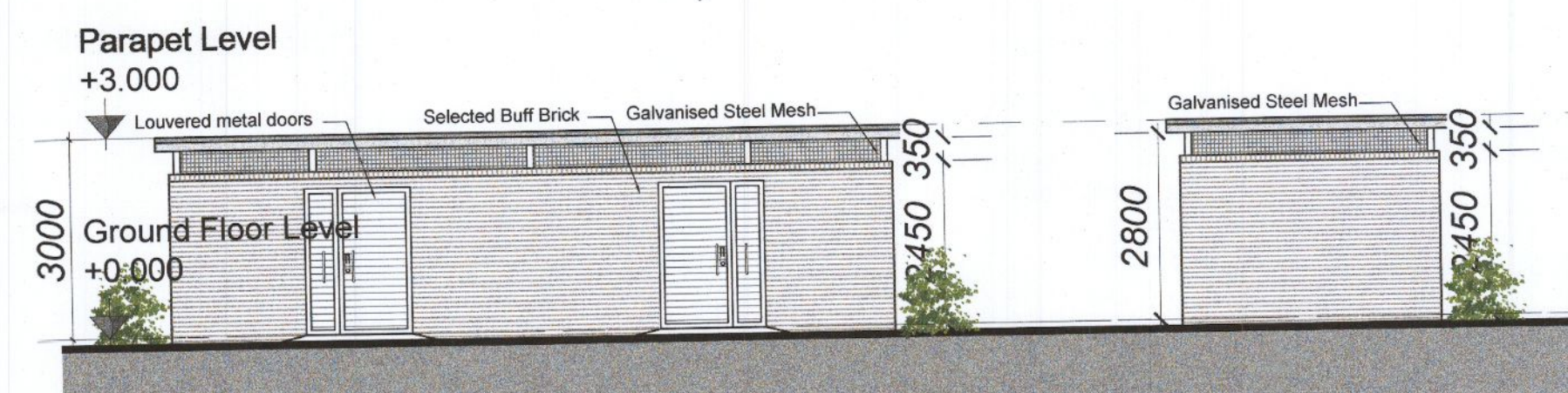
DUPLEX BIKE STORAGE RATIO - 2 PER UNIT



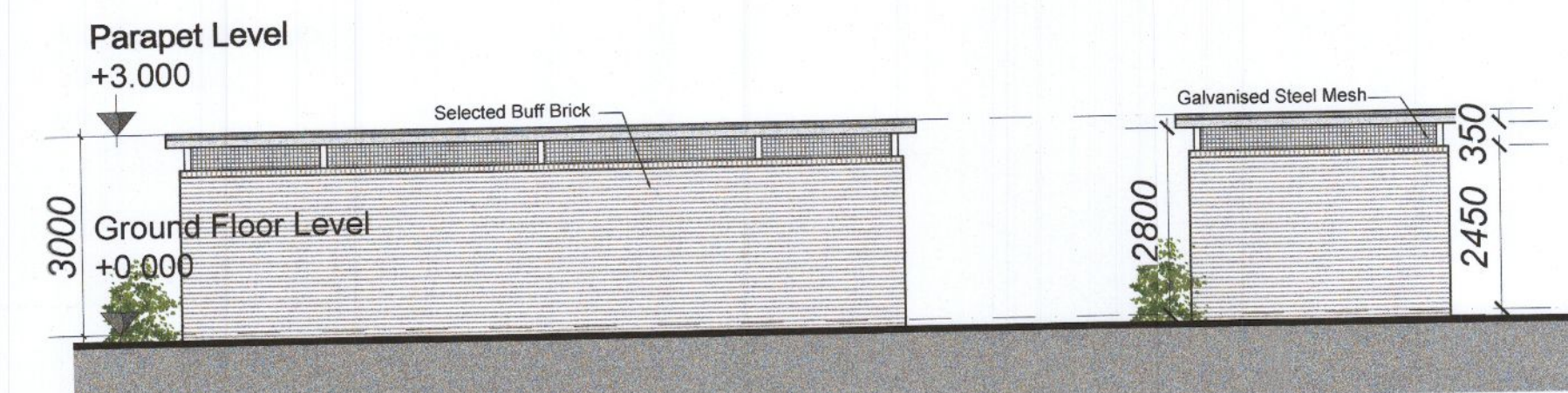
ROOF PLAN



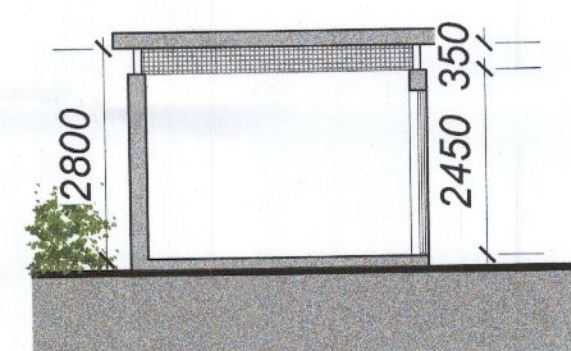
BIN STORE 1 Scale 1:200



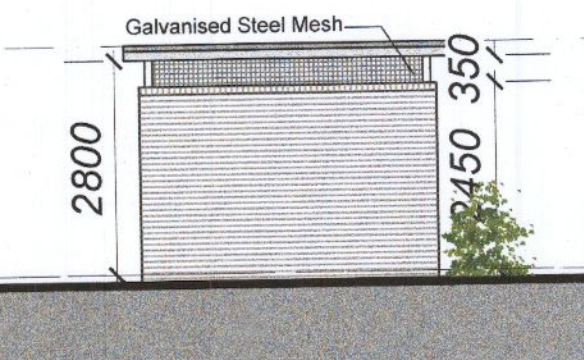
BIN STORE 1 ELEVATION 1



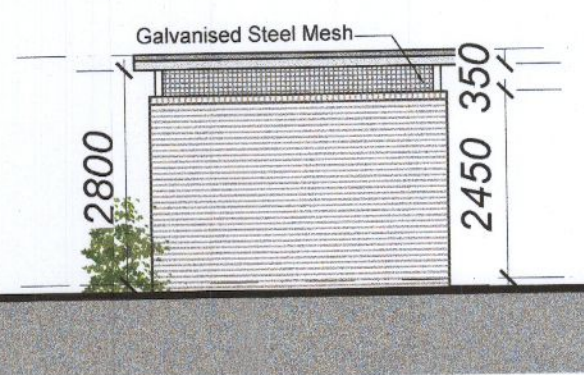
BIN STORE 1 ELEVATION 3



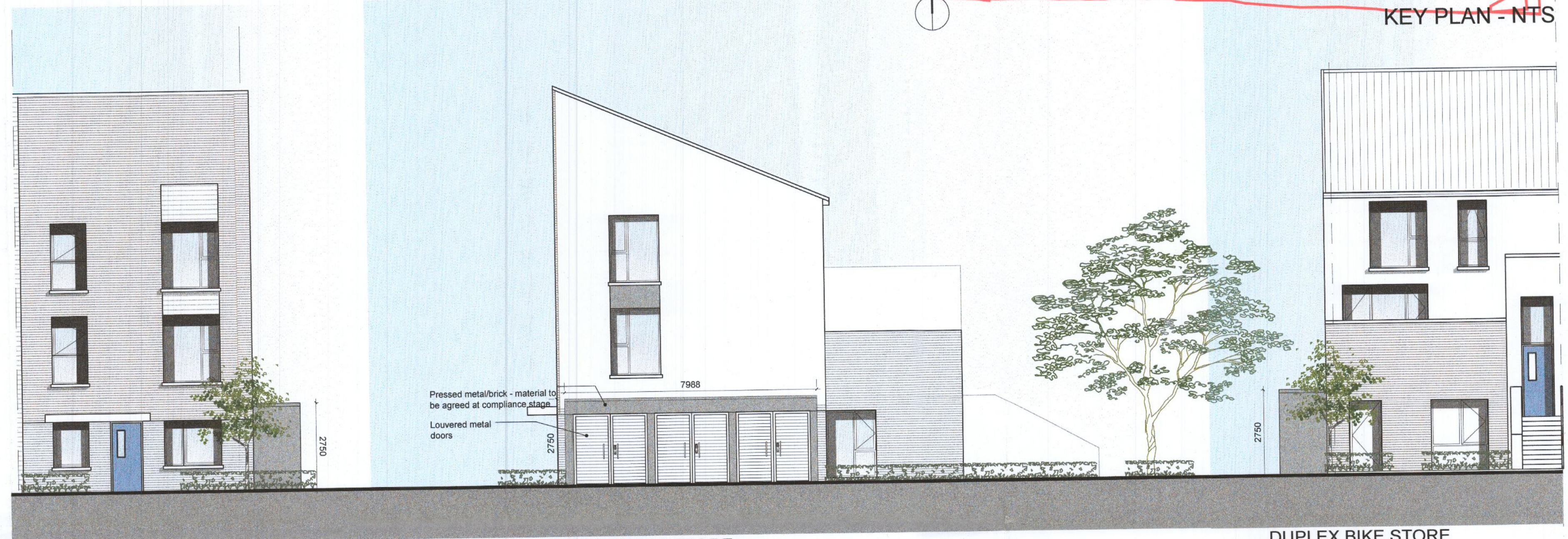
BIN STORE 1 SECTION



BIN STORE 1 ELEVATION 2



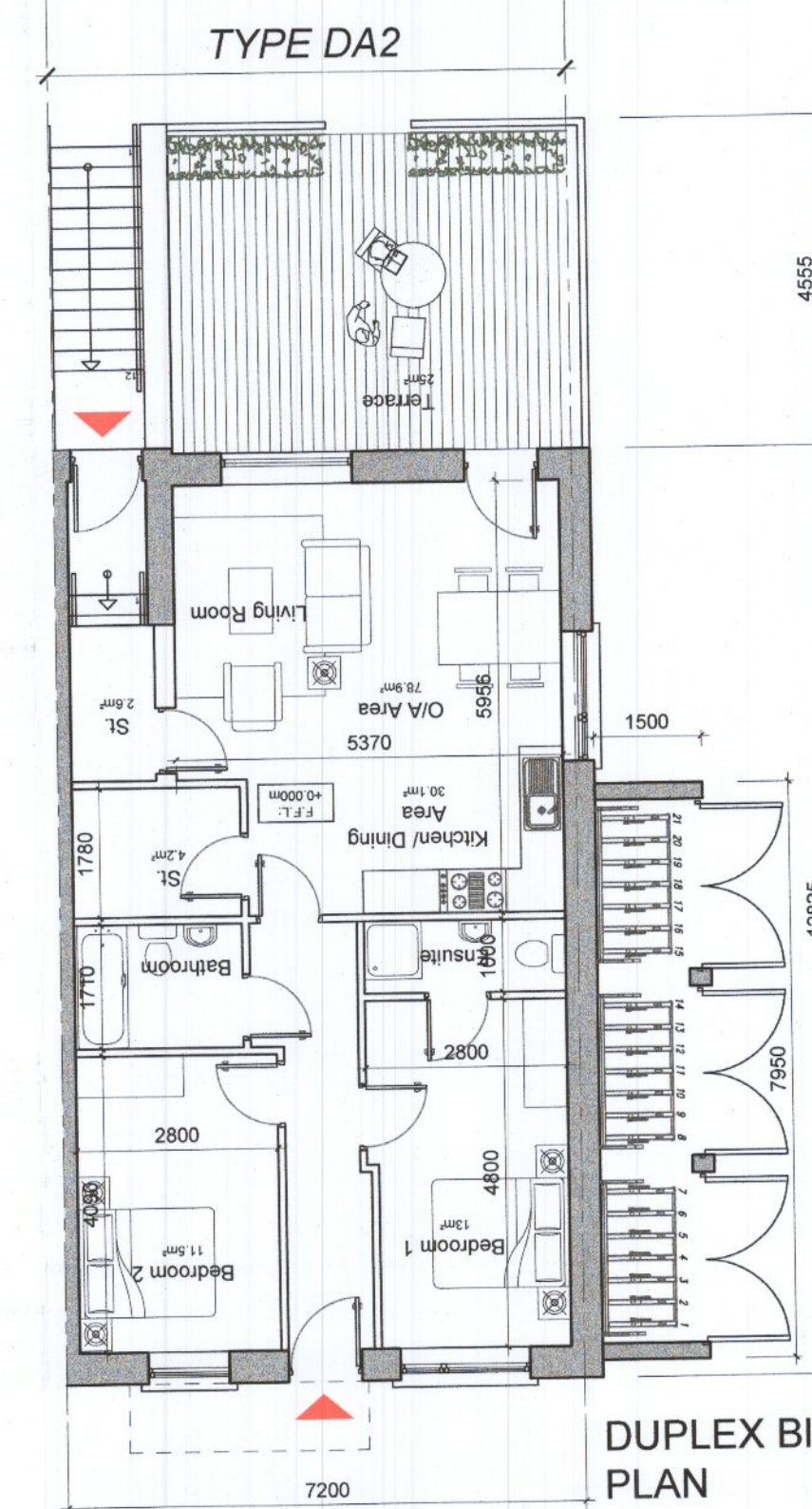
BIN STORE 1 ELEVATION 4



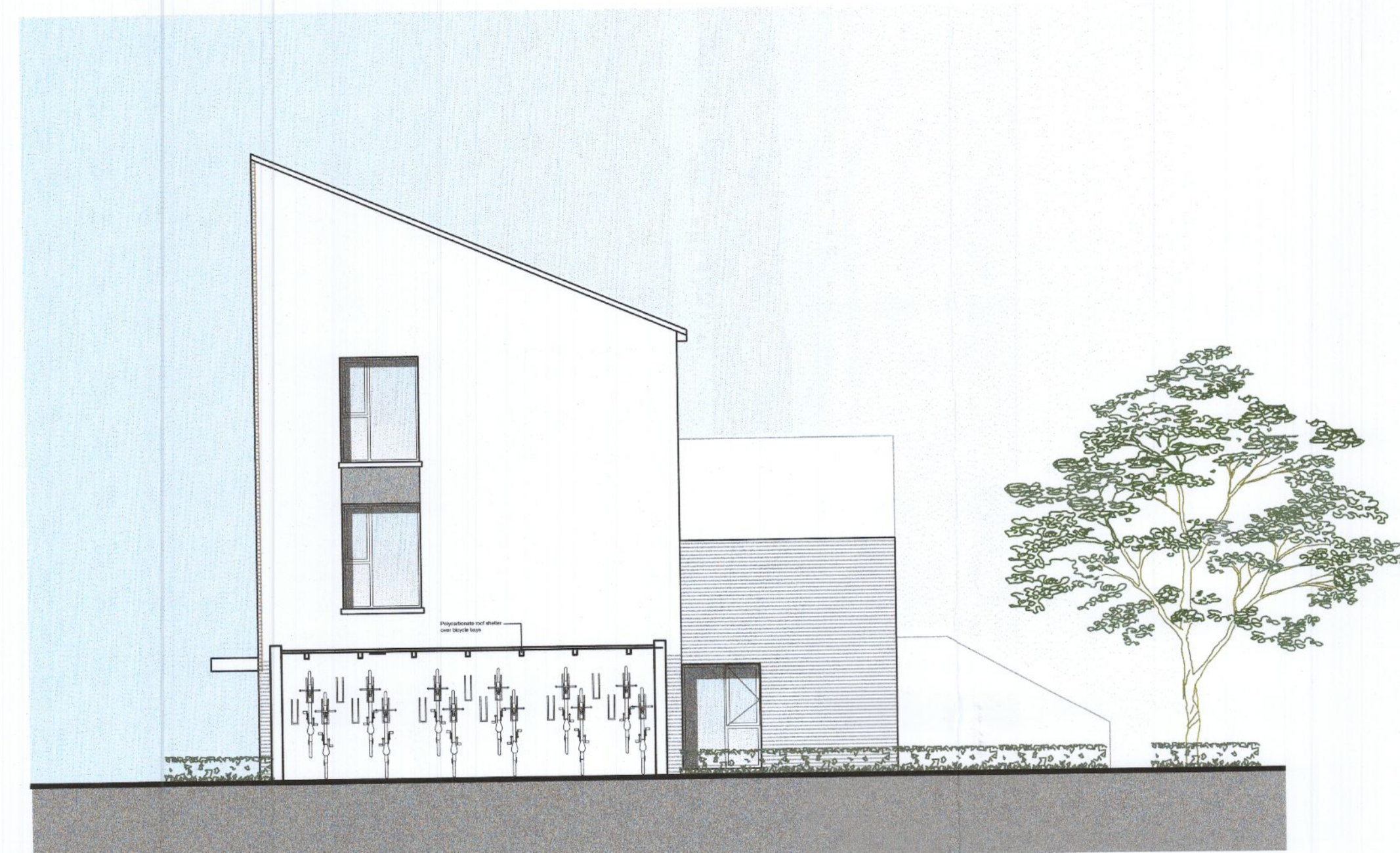
DUPLEX BIKE STORE FRONT ELEVATION

DUPLEX BIKE STORE SIDE ELEVATION

DUPLEX BIKE STORE REAR ELEVATION



DUPLEX BIKE STORE PLAN



DUPLEX BIKE STORE SECTION

NOTES:

DO NOT SCALE FROM DRAWINGS. WORK TO FIGURED DIMENSIONS ONLY. ARCHITECT TO BE NOTIFIED OF ALL DISCREPANCIES.

REVISIONS		
DATE	DESCRIPTION	No.

MCORM
 MCGROSSAN O'ROURKE MANNING ARCHITECTS

PROJECT TITLE: CLONBURRIS PHASE 1A
 DRAWING TITLE: BIN AND BIKE STORES DUPLEXES

DATE: MAY 22
 SCALE: 1:100@A1
 JOB NO: 19014
 DRAWING NO: PL023

DATE: MAY 22
 DRAWN BY: spw
 REVISION:

1 Greenhills Street, Dublin 8, D08 A49Y, Ireland.
 Tel: 01-4786700 Fax: 01-4786711 E-Mail: arch@mcorm.com