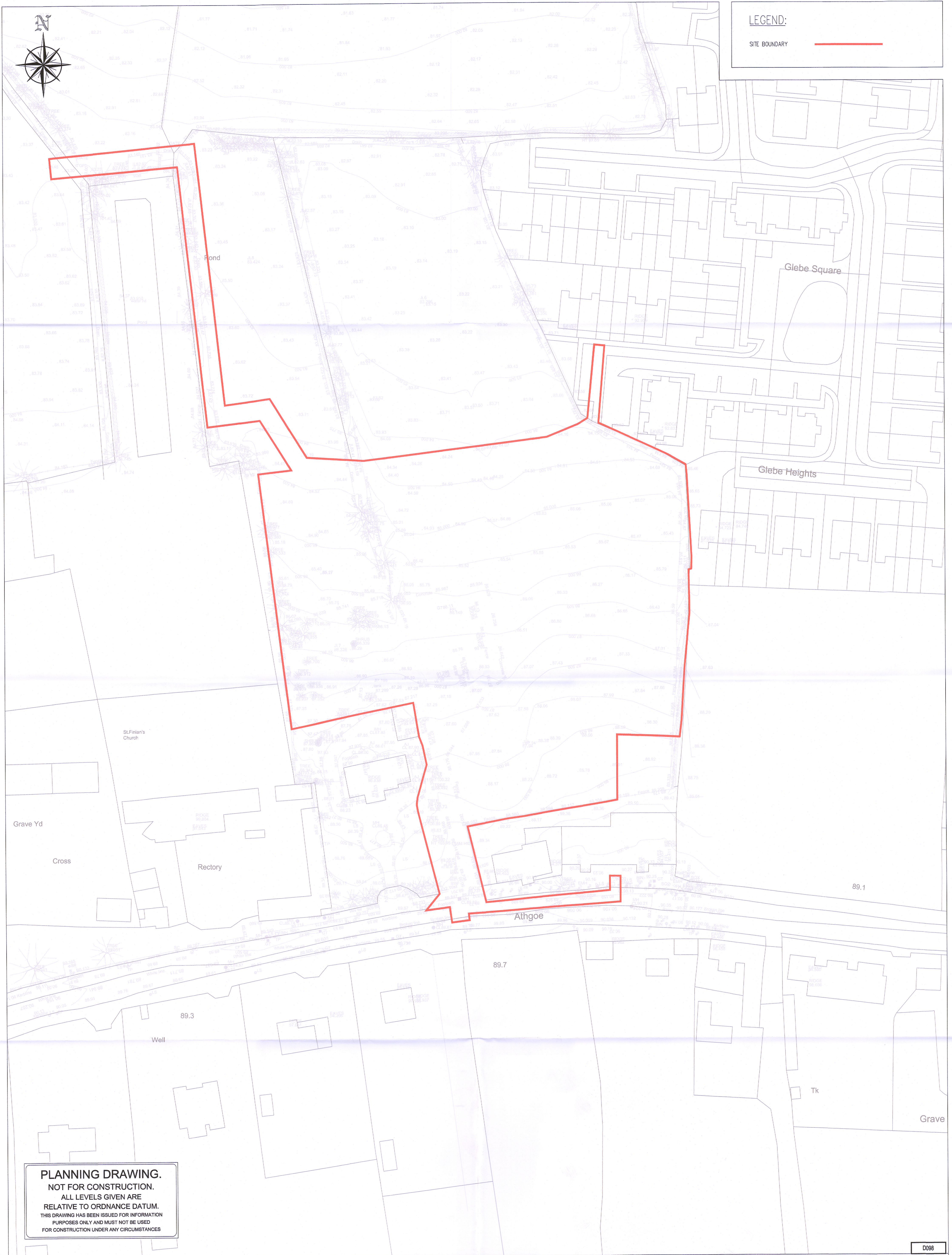




LEGEND:

SITE BOUNDARY



PLANNING DRAWING.
NOT FOR CONSTRUCTION.
 ALL LEVELS GIVEN ARE
 RELATIVE TO ORDNANCE DATUM.
 THIS DRAWING HAS BEEN ISSUED FOR INFORMATION
 PURPOSES ONLY AND MUST NOT BE USED
 FOR CONSTRUCTION UNDER ANY CIRCUMSTANCES

D098

- NOTES**
1. For setting out refer to Architect's drawings.
 2. This drawing to be read in conjunction with all other Architectural and Engineering drawings and all other relevant drawings and Specifications.
 3. DO NOT SCALE THIS DRAWING. Use figured dimensions only.
 4. No part of this document may be reproduced or transmitted in any form or stored in any retrieval system of any nature without the written permission as copyright holder except as agreed for use on the project for which the document was originally issued.
 5. Ordnance Survey Ireland Licence Number EN 0074022

Rev. No.	Date	REVISION NOTE	Dm. By	Chkd. By
P1	19.05.2022	ISSUED FOR PLANNING	SC	SS
P2	10.06.2022	REVISED AND REISSUED FOR PLANNING	SC	SS

Architect		JFOC Architects	
Project		Proposed Development at Newcastle, Co. Dublin	
Title		Topographical Survey	
Dwg. No.		NCA-CSC-ZZ-SI-DR-C-0001	
Date	Dm by	Chkd by	Apd by Scale
MAY 2022	DD	SS	OS 1:500 @ A1
Revision			P2

CS Consulting Group
 DUBLIN | LONDON | LIMERICK

Head Office
 19-22 Dame Street, Dublin 2.
 T: +353 (0)1 5480863
 e: info@csconsulting.ie
 w: www.csconsulting.ie

Quality Environment I.S. EN ISO 9001:2008
 Energy I.S. EN ISO 14001:2004
 Health & Safety OHSAS 18001:2007