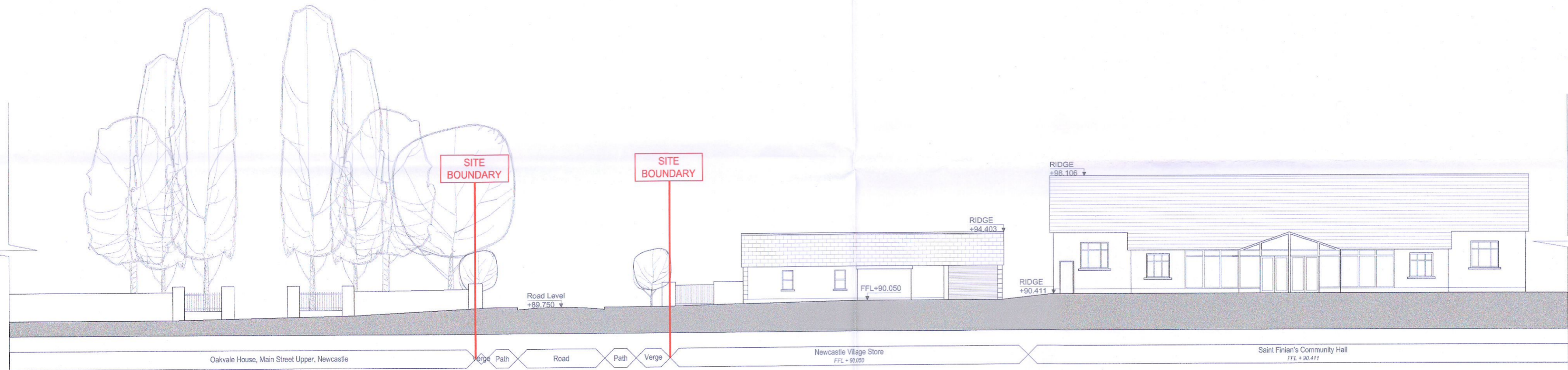


Contiguous Elevation - View 7-7 Existing



Contiguous Elevation - View 7-7 Proposed

KEY PLAN  
NOT TO SCALE



**\*NOTE:**

HOUSE NO. 1 - 7 HAVE NO OPPOSING REAR WINDOWS. PLEASE REFER TO DESIGN STATEMENT FOR MORE INFORMATION.

**MATERIALS:**

ALL HOUSE TYPES IN THE SCHEME ARE FINISHED WITH A CEMENT RENDER. CEMENT RENDER IS A COMMON MATERIAL USED IN THE AREA FOR ITS LOW MAINTENANCE REQUIREMENTS AND LONG LIFE SPAN.

ALL UNIT TYPES HAVE A BRICK DETAIL AT THE ENTRANCE WAY. THE BRICK PROVIDES A MORE ROBUST SURFACE WHERE CONTACT IS MORE LIKELY TO OCCUR.

ALL UNITS FEATURE SELECTED SLATE ROOF TILES WITH LOW PROFILE GUTTER DETAILS.

ALL UNITS FEATURE UPVC/ALUMINIUM WINDOWS WITH BLACK FRAMES.

<p><b>IMPORTANT</b></p> <p>Do not scale this drawing, only stated dimensions to be used.</p> <p>Any discrepancies to be immediately notified to JFOC Architects. All dimensions to be checked on site. Only drawings marked for construction are suitable for this purpose, all others are only suitable for the use indicated by 'Project Stage'.</p> <p>This drawing is protected by copyright and is the property of JFOC Architects. Any disclosure, copying, reproduction or distribution of this information, without written authorisation is prohibited and will be deemed a breach of copyright.</p>	ORIENTATION	CLIENT	PROJECT TITLE	DRAWING TITLE	SCALE	PROJECT STAGE	PLANNING	<p><b>JFOC</b> ARCHITECTS</p> <p>11A Greenmount House Harolds Cross Dublin 6W</p> <p>01 4530277 jfocarchitects.com info@jfocarchitects.com</p>	
		Deane & Deane Ltd.	Proposed Residential Development Newcastle, Co. Dublin	Contiguous Elevations	DRAWN	DRAWING NUMBER	REV.		
					CHECKED				19.134.PD4003
					DATE				June 2022