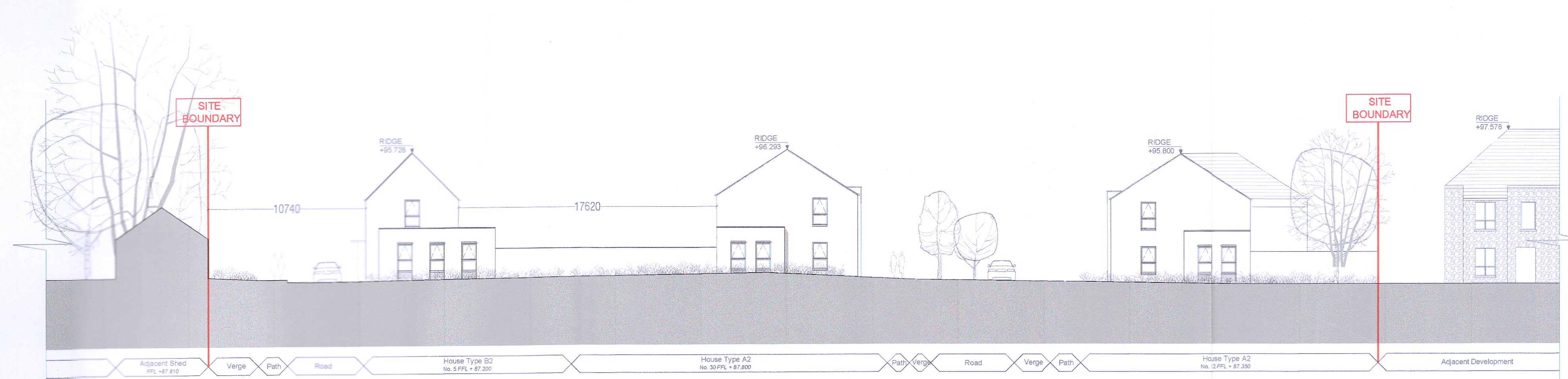


Contiguous Elevation - View 1-1



Contiguous Elevation - View 2-2



Contiguous Elevation - View 3-3



***NOTE**
 HOUSE NO. 1 - 7 HAVE NO OPPOSING REAR WINDOWS, PLEASE REFER TO DESIGN STATEMENT FOR MORE INFORMATION.
MATERIALS:
 ALL HOUSE TYPES IN THE SCHEME ARE FINISHED WITH A CEMENT RENDER. CEMENT RENDER IS A COMMON MATERIAL USED IN THE AREA FOR ITS LOW MAINTENANCE REQUIREMENTS AND LONG LIFE SPAN.
 ALL UNITS TYPES HAVE A BRICK DETAIL AT THE ENTRANCE WAY. THE BRICK PROVIDES A MORE ROBUST SURFACE WHERE CONTACT IS MORE LIKELY TO OCCUR.
 ALL UNITS FEATURE SELECTED SLATE ROOF TILES WITH LOW PROFILE GUTTER DETAILS.
 ALL UNITS FEATURE UPVC/ALUMINIUM WINDOWS WITH BLACK FRAMES.

<p>DESIGNER JFOC Architects 114 Commercial Street Dublin 8 D08 A8E217 Dublin@jfoc.com www.jfoc.com</p>	<p>PROJECT Proposed Residential Development Newcastle, Co. Dublin</p>	<p>DATE 19.134.PD4001 May 2022</p>	<p>SCALE 1:200 @ A1</p>	<p>PROJECT TYPE PLANNING</p>	<p>DATE May 2022</p>
---	--	---	---	--	--