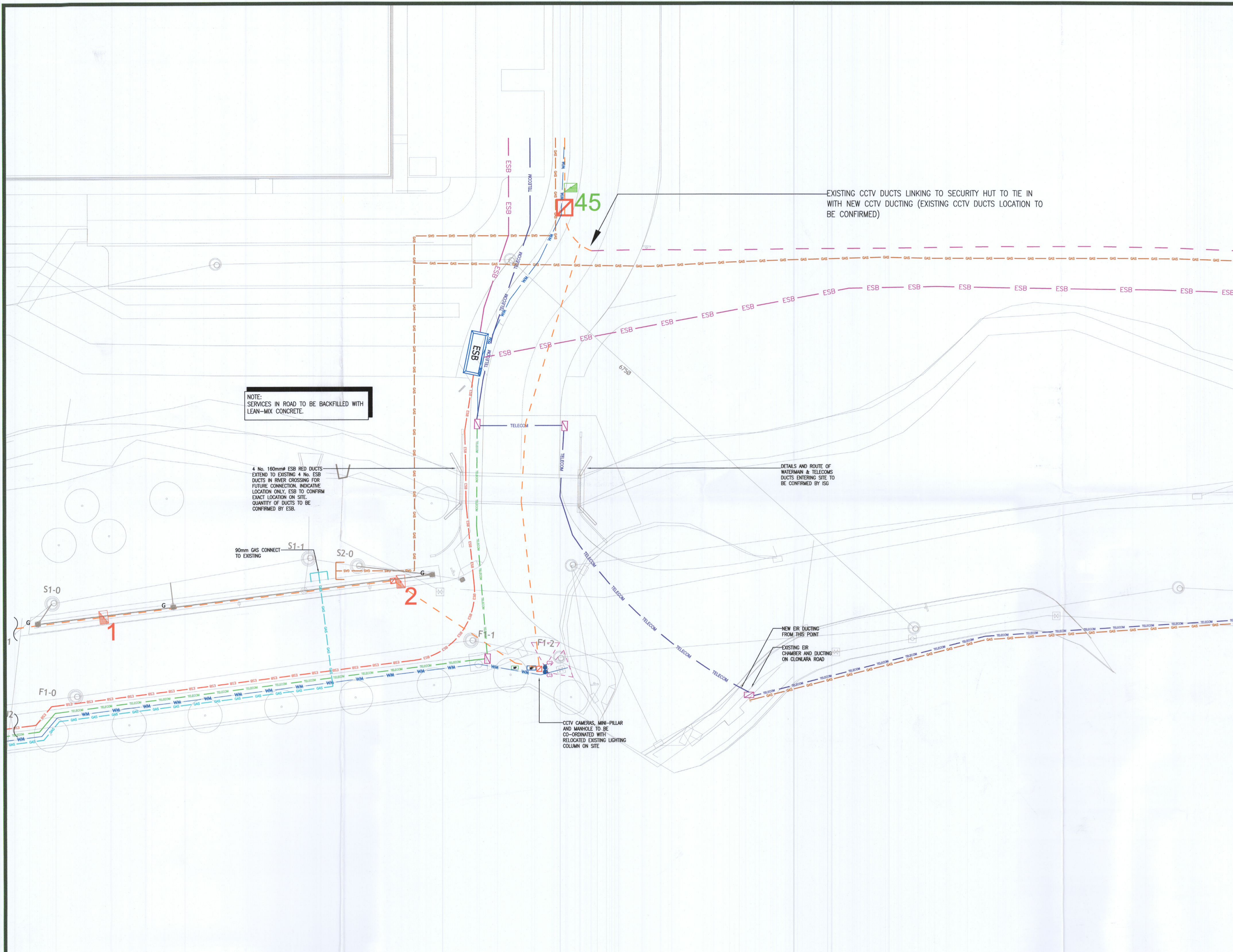


This drawing is the copyright of METEC Consulting Engineers and may not be reproduced in whole or in part without their expressed written permission. All figured dimensions are to be verified on site and any discrepancies to be reported to the Engineer immediately.



**LEGEND OF SYMBOLS**

- TELECOM — EXISTING EIR DUCTING
- EXISTING CCTV DUCTING
- GAS — EXISTING GAS PIPELINE
- TELECOM — PROPOSED NEW TELECOM DUCT LAYOUT (2 No. 110mm $\phi$  BLACK DUCTS AS PER TELECOM PROVIDER'S SPECIFICATION) C/W ROPES
- ESB — PROPOSED NEW M/LV ESB DUCT LAYOUT (160mm $\phi$  RED DUCTS AS PER ESB SPECIFICATION)
- ESB — EXISTING M/LV ESB DUCT
- GAS — PROPOSED NEW GAS MAIN (YELLOW PIPELINE)
- WM — PROPOSED NEW WATERMAIN AS PER CIVIL ENGINEERS SPECIFICATION
- WM — PROPOSED NEW 150mm $\phi$  WATERMAIN AS PER CIVIL ENGINEERS SPECIFICATION
- PROPOSED NEW PUBLIC LIGHTING & CCTV DUCTING (160mm $\phi$  RED PIPE DUCT & 110mm $\phi$  BLACK PIPE DUCT) C/W ROPES. PUBLIC LIGHTING DUCTING C/W 2 No. 50mm $\phi$  TEE-PIECE CONNECTIONS FROM MAIN PIPE-DUCT RUN TO BASE OF EACH LIGHTING COLUMN
- 300mm x 300mm ACCESS CHAMBER WHERE REQUIRED FOR PUBLIC LIGHTING C/W 2 No. 50mm $\phi$  TEE-PIECE CONNECTIONS FROM MAIN PIPE-DUCT RUN TO BASE OF LIGHTING COLUMN
- 800mm x 800mm x 800mm L.T. POWER MANHOLE C/W CAST IRON COVER SUITABLE FOR VEHICULAR TRAFFIC
- 1110mm x 640mm JB4 EIR CHAMBER C/W IRON COVER SUITABLE FOR VEHICULAR TRAFFIC
- LIGHTING MINI PILLAR C/W 1 NO. EARTH ELECTRODE & INSPECTION CHAMBER
- CCTV MINI PILLAR C/W 1 NO. EARTH ELECTRODE & INSPECTION CHAMBER
- 5000mm x 2000mm ESB SOFTSPOT C/W 6 NO. RED 150MM PVC PIPE DUCTS
- VEELITE: METRO STREETLIGHT 55W 24LED 700mA 4000K STREET OPTIC R03
- VEELITE: METRO STREETLIGHT 55W 24LED 700mA 4000K FORWARD THROW OPTIC
- NETWORK SECURITY: POLE MOUNTED CCTV CAMERA



rev	date	description
P01	JUNE '22	PLANNING ISSUE

**metec**  
CONSULTING ENGINEERS  
mechanical • electrical • energy

La Vallée House  
Upper Dargle Road  
Bray  
Co. Wicklow  
A98 W2H9  
Ireland  
p: +353 (0)1 204 0005  
e: info@metec.ie  
w: www.metec.ie

project: **LINK ROAD TO CLONLARA ROAD  
BALDONNELL BUSINESS PARK  
DUBLIN 22**

architect: **JSA ARCHITECTS**

drawing title: **PROPOSED MECHANICAL & ELECTRICAL  
SITE SERVICES**

job no.: 21066	drawing no.: MPK-MET-ZZ-DR-E-6001
drawn by: CR	checked by: SMCN
date: APR '22	scale: 1:200@A1
	rev no.: P01